

# **Sentencing Practices in Tennessee**



## **Administrative Office of the Courts**

### **Information for Cases Sentenced Between July 1, 2012 to December 31, 2012**

Data Extracted: June 2013

Data Processed: June 2013

## Sentencing Practices in Tennessee Contents

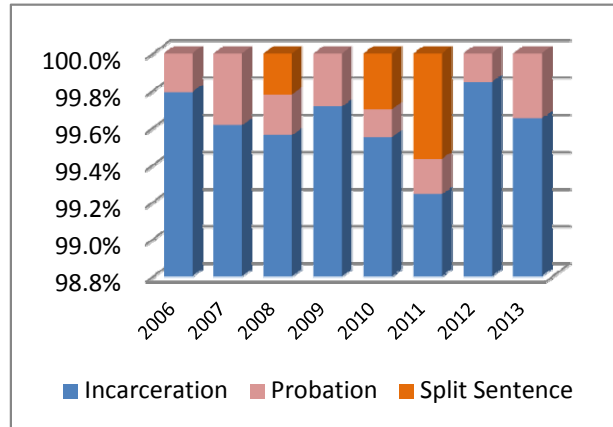
Percent of Cases Pre and Post 2005 Reform Act	1
Sentence Type Information	
Class A	1
Class B	1
Class C	2
Class D	2
Class E	2
Average Incarceration Lengths in Months	
Class A	3
Rape of Child	4
Second Degree Murder	5
Especially Aggravated Kidnapping	6
Class B	7
Schedule II Cocaine	8
Aggravated Robbery	9
Aggravated Sexual Battery	10
Class C	11
Aggravated Burglary	12
Aggravated Assault	13
Schedule II Cocaine < ½ Gram	14
Schedule II Drugs: Max \$100,000 Fine	15
Class D	16
Theft: \$1,000 to \$10,000	17
Burglary Other Than Habitation	18
Identity Theft	19
Obtain Drugs by Fraud	20
Class E	21
Forgery: Up to \$1,000	22
Burglary: Auto	23
Theft: \$500 to \$1,000	24
Schedule VI Drugs: Not < ½ Ounce	25
Habitual Traffic Offender	26
Failure to Appear (Felony)	27
Average Probation Lengths in Months	
Class B	28
Class C	29
Class D	30
Class E	31
Average Split Sentence Lengths in Months	
Class B	32
Class C	33
Class D	34
Class E	35

## Sentence Type Information

**Percent of Sentence Type - Felony Class A - All Offenders**

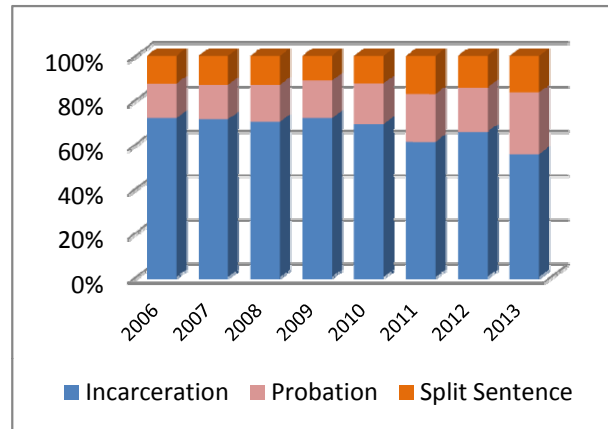
	Split			N
	Incarceration	Probation	Sentence	
	Percent	Percent	Percent	
2006	99.8%	0.2%	0.0%	481
2007	99.6%	0.4%	0.0%	517
2008	99.6%	0.2%	0.2%	454
2009	99.7%	0.3%	0.0%	699
2010	99.5%	0.2%	0.3%	664
2011	99.2%	0.2%	0.6%	528
2012	99.8%	0.2%	0.0%	647
2013	99.7%	0.3%	0.0%	286

Incarceration includes life without parole and death sentences, probation includes sentences to community corrections.



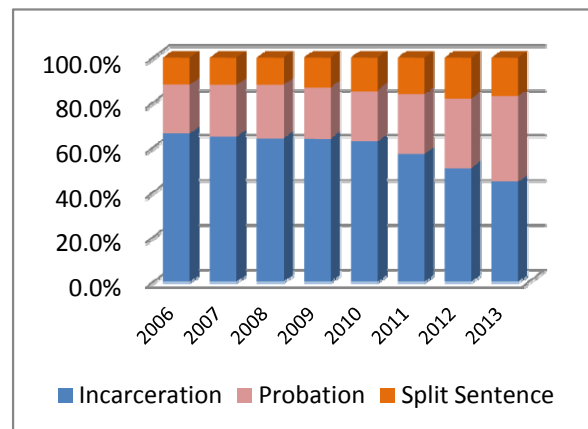
**Percent of Sentence Type - Felony Class B - All Offenders**

	Split			N
	Incarceration	Probation	Sentence	
	Percent	Percent	Percent	
2006	71.8%	15.6%	12.6%	3,279
2007	71.3%	15.6%	13.1%	4,074
2008	70.2%	16.7%	13.0%	3,902
2009	71.8%	17.0%	11.2%	3,784
2010	69.2%	18.4%	12.4%	3,729
2011	61.1%	21.6%	17.3%	3,808
2012	65.6%	20.1%	14.3%	3,827
2013	55.7%	27.9%	16.5%	1,626



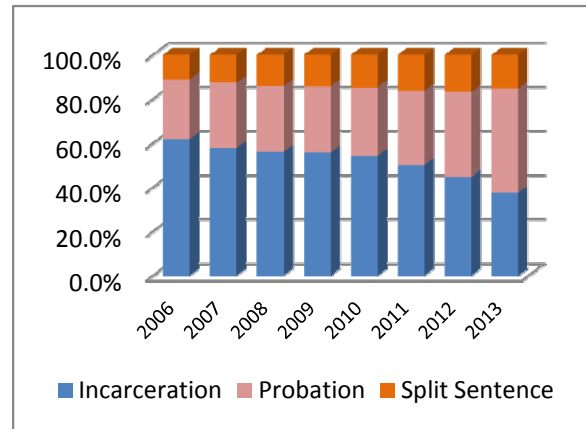
**Percent of Sentence Type - Felony Class C - All Offenders**

	Split			N
	Incarceration	Probation	Sentence	
	Percent	Percent	Percent	
2006	66.2%	21.7%	12.1%	9,534
2007	64.8%	23.1%	12.2%	10,234
2008	64.0%	23.8%	12.2%	10,176
2009	63.9%	22.8%	13.3%	9,981
2010	62.6%	22.9%	14.5%	10,642
2011	57.0%	26.7%	16.3%	11,280
2012	50.8%	31.0%	18.2%	11,188
2013	44.7%	38.2%	17.1%	4,973



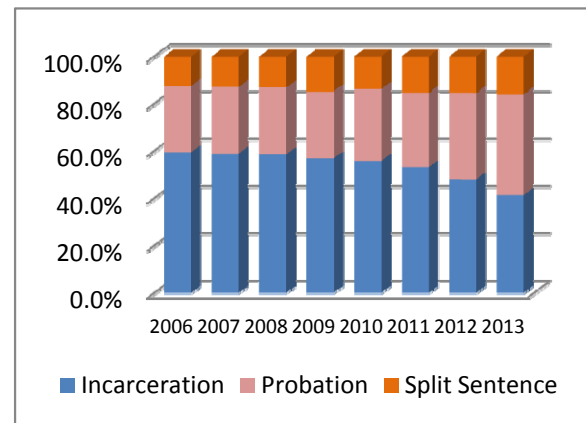
**Percent of Sentence Type - Felony Class D - All Offenders**

	Incarceration	Probation	Split	N
	Percent	Percent	Sentence Percent	
2006	61.9%	27.0%	11.1%	9,198
2007	57.8%	29.6%	12.6%	10,117
2008	56.0%	29.8%	14.1%	10,593
2009	55.7%	30.1%	14.2%	10,813
2010	54.2%	31.3%	14.5%	12,038
2011	50.1%	33.7%	16.2%	12,541
2012	44.7%	38.5%	16.7%	12,788
2013	37.5%	47.3%	15.2%	5,593



**Percent of Sentence Type - Felony Class E - All Offenders**

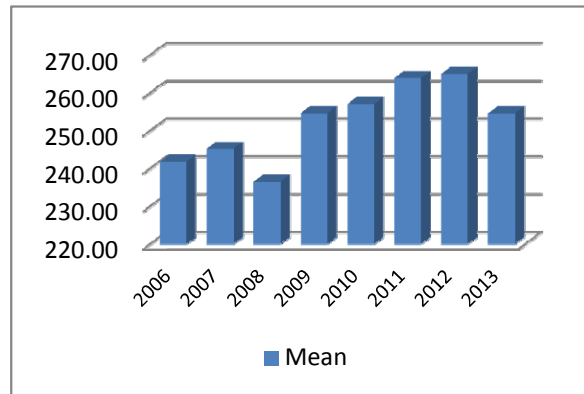
	Incarceration	Probation	Split	N
	Percent	Percent	Sentence Percent	
2006	59.5%	28.1%	12.4%	15,697
2007	58.9%	28.2%	12.9%	16,356
2008	58.6%	28.3%	13.1%	15,662
2009	56.9%	28.5%	14.6%	15,424
2010	55.8%	30.5%	13.7%	14,611
2011	53.2%	31.5%	15.4%	14,751
2012	48.0%	36.5%	15.4%	13,699
2013	41.3%	42.8%	15.9%	6,277



### Average Incarceration Lengths in Months by Felony Class and Offense

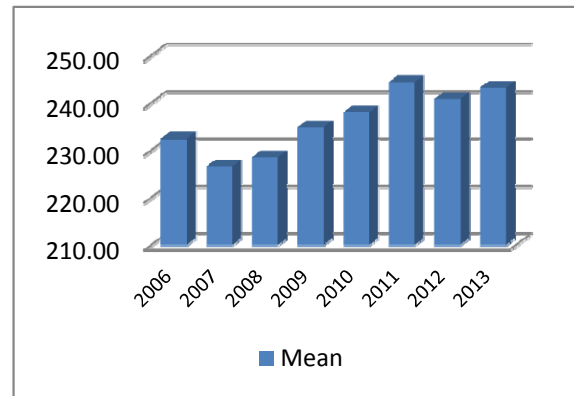
**Average Incarceration Length -  
Class A - All Offenders**

	Mean	Median	Standard Deviation	N
2006	241.86	240.00	77.16	480
2007	245.24	240.00	90.46	515
2008	236.55	216.00	74.88	452
2009	254.64	240.00	86.06	697
2010	257.11	240.00	86.90	661
2011	263.93	240.00	89.95	524
2012	265.06	240.00	93.46	646
2013	254.61	240.00	78.76	285



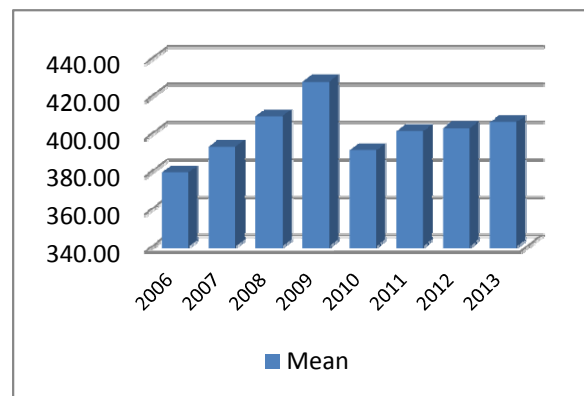
**Average Incarceration Length -  
Class A - Standard Offenders**

	Mean	Median	Standard Deviation	N
2006	232.46	240.00	45.07	410
2007	226.60	240.00	47.21	423
2008	228.53	216.00	44.96	395
2009	234.85	240.00	43.04	591
2010	237.99	240.00	49.43	540
2011	244.39	240.00	47.48	433
2012	240.84	240.00	47.49	498
2013	243.19	240.00	44.77	248



**Average Incarceration Length -  
Class A - Multiple Offenders**

	Mean	Median	Standard Deviation	N
2006	379.35	360.00	68.42	31
2007	393.06	420.00	79.84	49
2008	409.20	408.00	62.40	20
2009	427.64	480.00	60.37	66
2010	391.07	384.00	67.64	73
2011	401.19	396.00	62.50	52
2012	402.92	390.00	55.94	78
2013	406.11	420.00	63.78	19

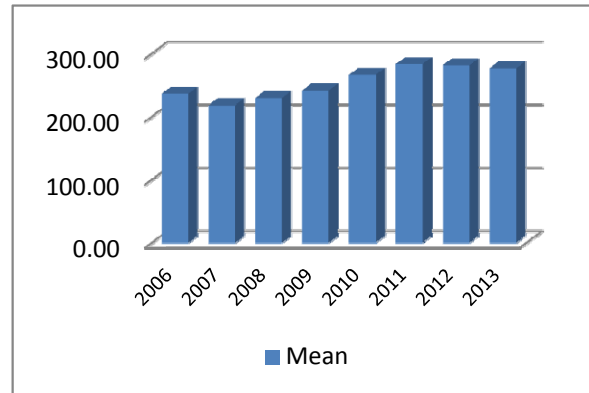


### Average Incarceration Lengths in Months by Felony Class and Offense

**Average Incarceration Length - Rape of a Child - All Offenders**

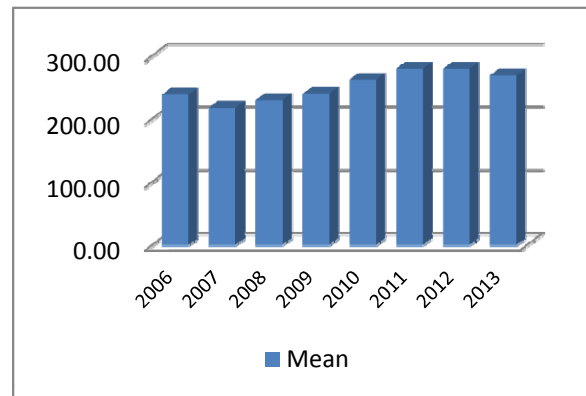
	Mean	Median	Standard Deviation	N
2006	236.63	240.00	44.15	153
2007	218.77	180.00	52.37	141
2008	229.88	216.00	44.20	121
2009	242.05	240.00	40.98	202
2010	266.60	300.00	49.27	129
2011	283.50	300.00	46.62	92
2012	281.53	300.00	40.94	102
2013	276.92	300.00	63.67	26

to low occurrence frequencies.



**Average Incarceration Length - Rape of a Child - Standard Offenders**

	Mean	Median	Standard Deviation	N
2006	238.63	240.00	42.99	149
2007	218.10	180.00	50.40	134
2008	229.88	216.00	44.20	121
2009	239.67	240.00	35.68	199
2010	262.05	300.00	45.79	123
2011	279.56	300.00	30.46	86
2012	279.56	300.00	35.98	101
2013	268.80	300.00	49.36	25

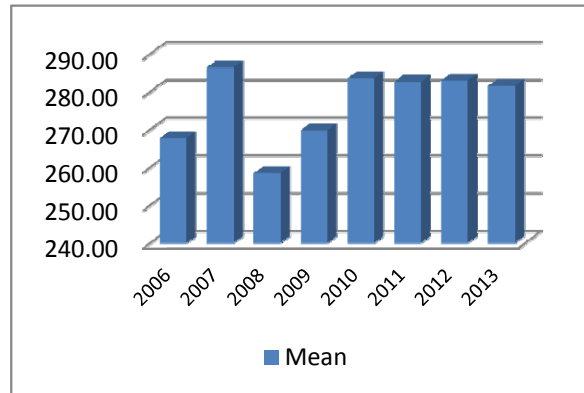


### Average Incarceration Lengths in Months by Felony Class and Offense

**Average Incarceration Length - Second Degree  
Murder - All Offenders**

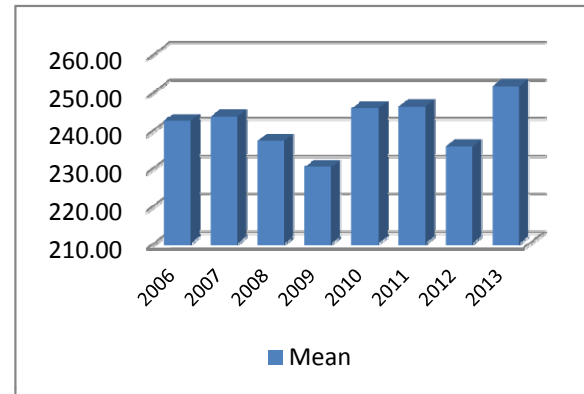
	Mean	Median	Standard Deviation	N
2006	267.79	258.00	79.32	98
2007	286.50	264.00	95.27	92
2008	258.49	240.00	83.88	86
2009	269.82	240.00	94.85	116
2010	283.57	258.00	96.60	126
2011	282.67	258.00	96.24	107
2012	283.02	240.00	102.48	118
2013	281.57	288.00	77.73	42

to low occurrence frequencies.



**Average Incarceration Length - Second Degree  
Murder - Standard Offenders**

	Mean	Median	Standard Deviation	N
2006	242.42	240.00	45.18	77
2007	243.60	240.00	44.26	70
2008	237.17	240.00	50.22	72
2009	230.23	240.00	41.20	90
2010	245.73	240.00	45.23	88
2011	246.24	240.00	42.76	74
2012	235.67	240.00	44.38	79
2013	251.61	264.00	48.25	31

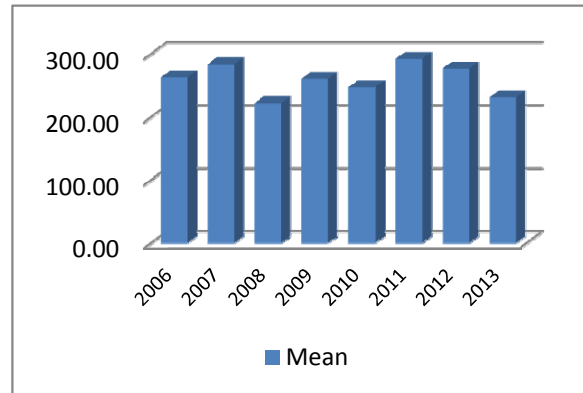


### Average Incarceration Lengths in Months by Felony Class and Offense

**Average Incarceration Length - Especially Aggravated Kidnapping - All Offenders**

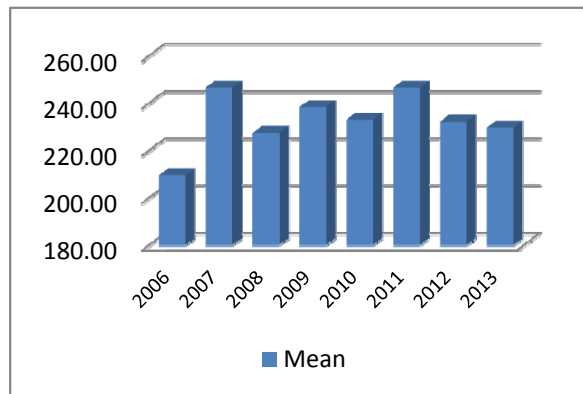
	Mean	Median	Standard Deviation	N
2006	262.80	240.00	88.52	20
2007	284.00	252.00	130.64	39
2008	222.43	222.00	71.63	28
2009	260.81	240.00	105.31	77
2010	247.30	240.00	97.73	60
2011	292.24	264.00	120.55	51
2012	276.73	240.00	117.04	90
2013	231.32	240.00	47.16	38

to low occurrence frequencies.



**Average Incarceration Length - Especially Aggravated Kidnapping - Standard Offenders**

	Mean	Median	Standard Deviation	N
2006	209.54	180.00	45.86	13
2007	246.62	240.00	39.36	29
2008	227.45	240.00	44.20	22
2009	238.32	240.00	53.25	57
2010	233.00	240.00	48.69	48
2011	246.57	246.00	48.45	42
2012	232.21	240.00	45.17	67
2013	229.67	240.00	41.68	36



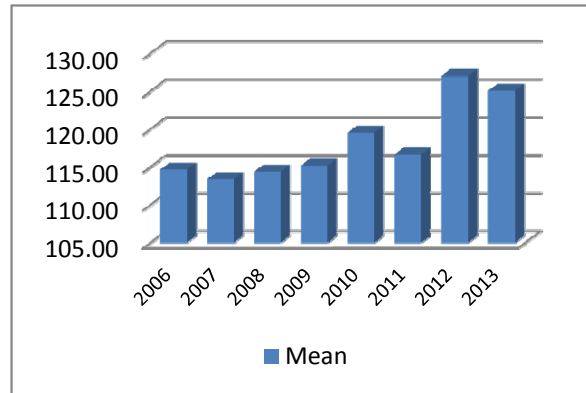


### Average Incarceration Lengths in Months by Felony Class and Offense

**Average Incarceration Length - Felony Class B - All Offenders**

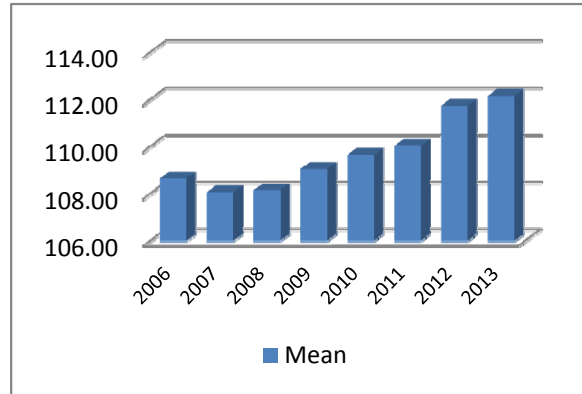
	Mean	Median	Standard Deviation	N
2006	114.67	96.00	34.77	2,355
2007	113.39	96.00	32.04	2,905
2008	114.39	96.00	35.64	2,738
2009	115.21	96.00	34.46	2,715
2010	119.56	96.00	42.52	2,580
2011	116.67	96.00	36.17	2,325
2012	127.04	120.00	47.35	2,508
2013	125.08	108.00	47.54	905

removed from 2004 because of an inordinately high



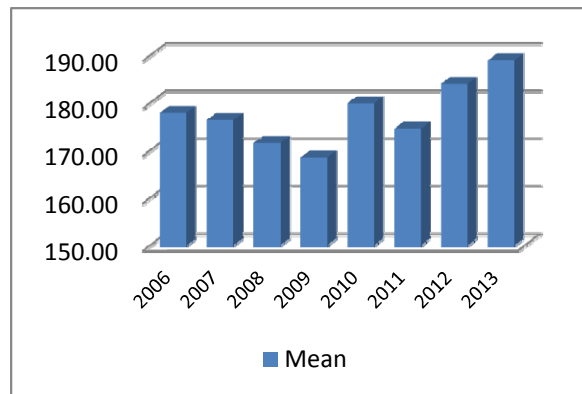
**Average Incarceration Length - Felony Class B - Standard Offenders**

	Mean	Median	Standard Deviation	N
2006	108.65	96.00	18.05	1,955
2007	108.06	96.00	17.25	2,469
2008	108.15	96.00	17.46	2,300
2009	109.05	96.00	18.02	2,277
2010	109.65	96.00	19.98	2,055
2011	110.03	96.00	18.53	1,860
2012	111.74	108.00	20.88	1,892
2013	112.16	108.00	19.55	730



**Average Incarceration Length - Felony Class B - Multiple Offenders**

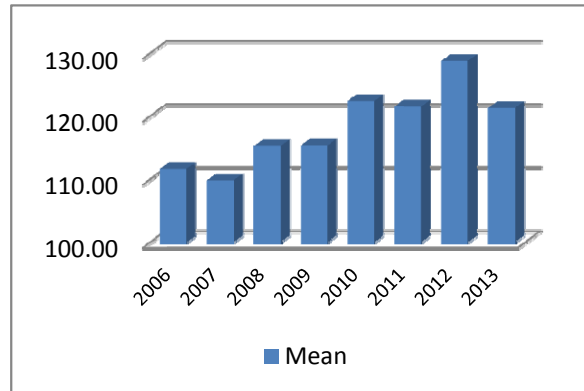
	Mean	Median	Standard Deviation	N
2006	177.92	180.00	39.26	192
2007	176.43	180.00	34.70	215
2008	171.60	168.00	34.75	211
2009	168.54	156.00	35.62	222
2010	179.94	180.00	37.78	280
2011	174.61	168.00	36.70	207
2012	184.04	180.00	35.80	408
2013	189.00	180.00	40.73	100



### Average Incarceration Lengths in Months by Felony Class and Offense

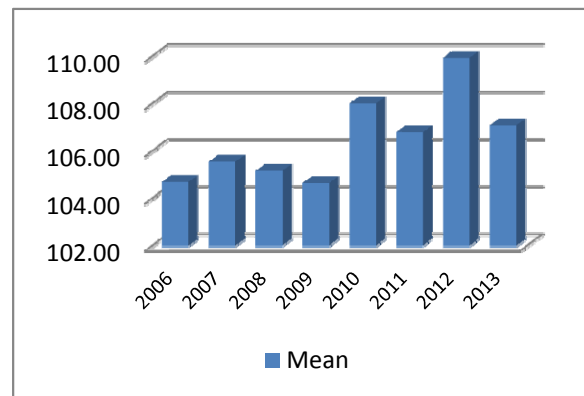
**Average Incarceration Length - Schedule II Cocaine - All Offenders**

	Mean	Median	Standard Deviation	N
2006	111.68	96.00	32.72	709
2007	109.85	96.00	26.27	931
2008	115.29	96.00	40.00	895
2009	115.39	96.00	34.61	689
2010	122.43	96.00	47.67	546
2011	121.55	108.00	40.78	393
2012	128.80	120.00	51.23	409
2013	121.32	120.00	38.03	134



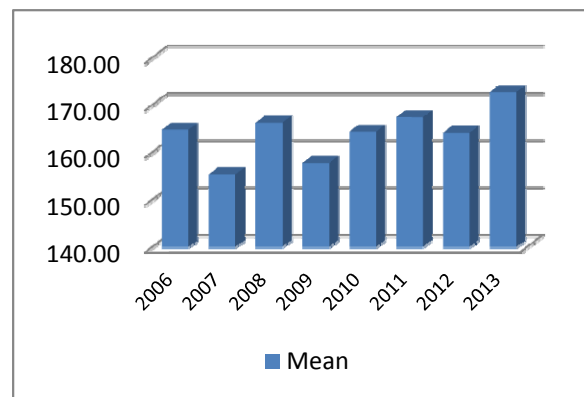
**Average Incarceration Length - Schedule II Cocaine - Standard Offenders**

	Mean	Median	Standard Deviation	N
2006	104.70	96.00	16.22	641
2007	105.55	96.00	15.35	853
2008	105.17	96.00	15.87	784
2009	104.65	96.00	14.83	573
2010	108.01	96.00	22.12	443
2011	106.80	96.00	17.49	314
2012	109.94	96.00	24.03	307
2013	107.09	96.00	20.67	99



**Average Incarceration Length - Schedule II Cocaine - Multiple Offenders**

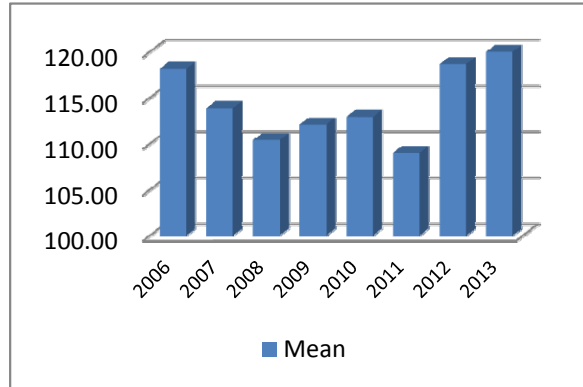
	Mean	Median	Standard Deviation	N
2006	164.83	168.00	24.81	53
2007	155.42	144.00	32.48	62
2008	166.30	156.00	35.20	83
2009	157.80	144.00	28.51	100
2010	164.41	144.00	42.04	87
2011	167.45	168.00	33.50	65
2012	164.19	144.00	35.34	85
2013	172.80	174.00	36.83	30



### Average Incarceration Lengths in Months by Felony Class and Offense

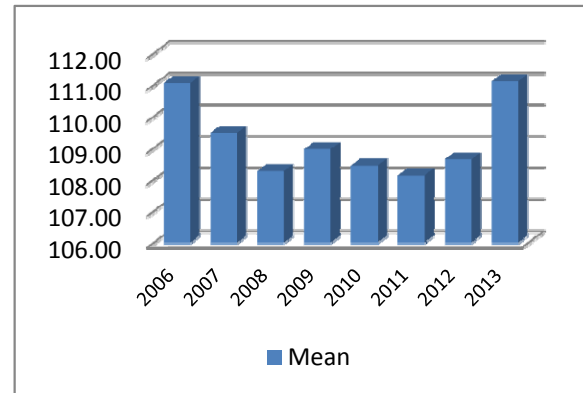
**Average Incarceration Length - Aggravated Robbery - All Offenders**

	Mean	Median	Standard Deviation	N
2006	118.18	96.00	43.54	799
2007	113.89	96.00	33.43	1,029
2008	110.39	96.00	34.95	811
2009	112.09	96.00	34.33	911
2010	112.93	96.00	36.59	904
2011	109.00	96.00	30.40	746
2012	118.66	96.00	48.32	636
2013	120.00	96.00	48.21	264



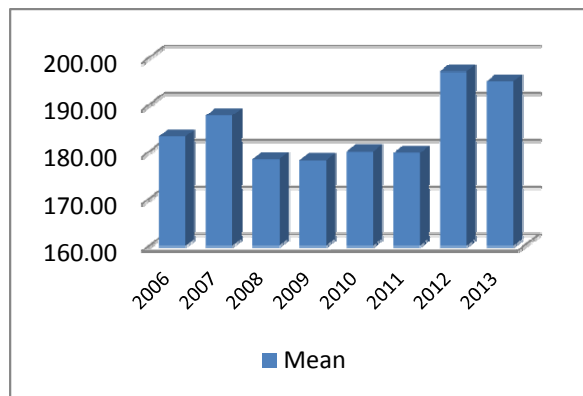
**Average Incarceration Length - Aggravated Robbery - Standard Offenders**

	Mean	Median	Standard Deviation	N
2006	111.06	96.00	19.93	527
2007	109.48	96.00	16.41	760
2008	108.28	96.00	17.05	615
2009	108.97	96.00	17.35	694
2010	108.45	96.00	20.69	651
2011	108.14	96.00	16.68	553
2012	108.64	96.00	18.01	458
2013	111.12	96.00	18.78	204



**Average Incarceration Length - Aggravated Robbery - Multiple Offenders**

	Mean	Median	Standard Deviation	N
2006	183.29	180.00	43.17	96
2007	187.74	180.00	29.96	93
2008	178.46	180.00	36.02	39
2009	178.22	174.00	39.17	54
2010	180.08	180.00	38.80	74
2011	179.77	180.00	36.89	26
2012	197.14	180.00	34.99	56
2013	195.00	204.00	45.43	16

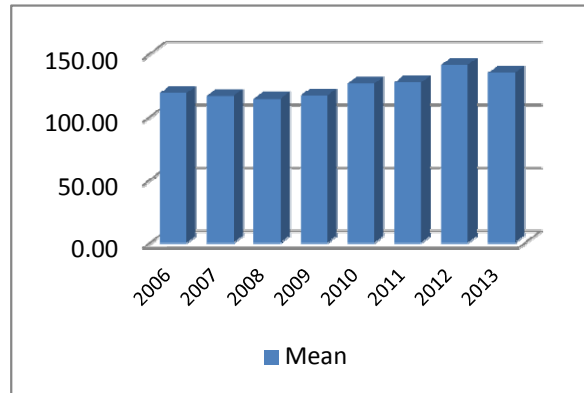


### Average Incarceration Lengths in Months by Felony Class and Offense

**Average Incarceration Length - Aggravated Sexual Battery - All Offenders**

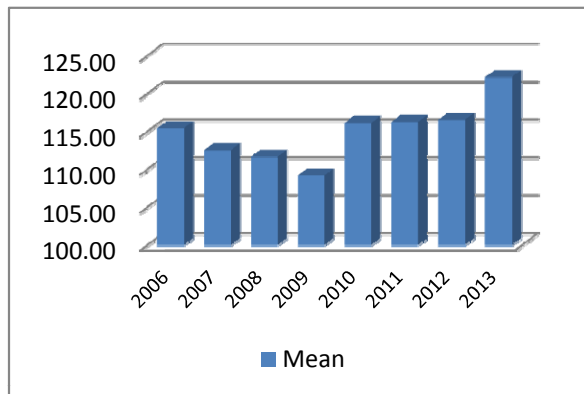
	Mean	Median	Standard Deviation	N
2006	118.89	120.00	24.17	182
2007	116.57	108.00	30.66	119
2008	114.32	108.00	22.57	166
2009	116.87	96.00	30.18	191
2010	126.40	120.00	31.22	182
2011	127.30	120.00	34.40	199
2012	141.16	120.00	39.90	382
2013	134.90	132.00	35.98	89

to low occurrence frequencies.



**Average Incarceration Length - Aggravated Sexual Battery - Standard Offenders**

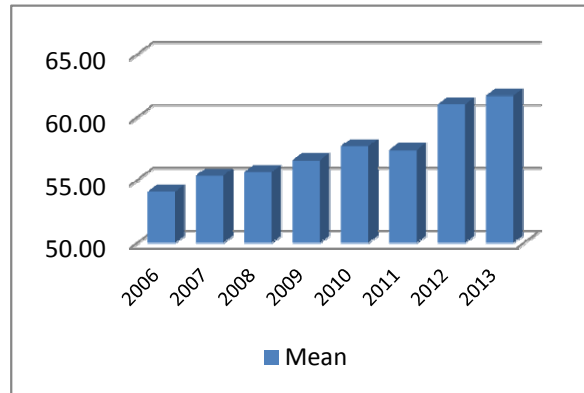
	Mean	Median	Standard Deviation	N
2006	115.44	120.00	18.32	171
2007	112.53	108.00	18.09	114
2008	111.69	102.00	18.67	156
2009	109.20	96.00	17.93	170
2010	116.16	120.00	18.24	153
2011	116.28	120.00	18.04	171
2012	116.54	120.00	15.97	250
2013	122.19	120.00	19.90	74



### Average Incarceration Lengths in Months by Felony Class and Offense

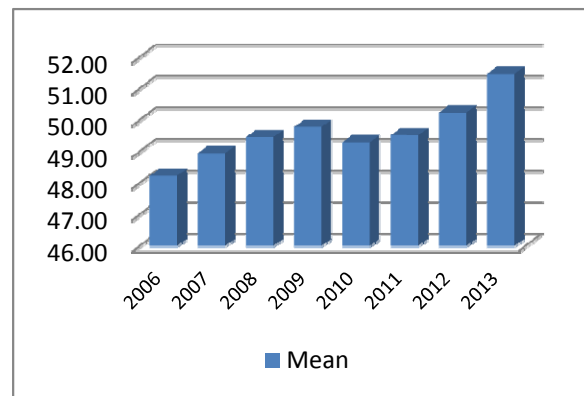
**Average Incarceration Length - Class C - All Offenders**

	Mean	Median	Standard Deviation	N
2006	54.07	48.00	23.35	6,310
2007	55.34	48.00	24.81	6,629
2008	55.61	48.00	24.45	6,513
2009	56.57	48.00	24.41	6,377
2010	57.69	48.00	27.66	6,663
2011	57.38	48.00	26.34	6,428
2012	61.01	48.00	30.36	5,684
2013	61.72	60.00	29.87	2,221



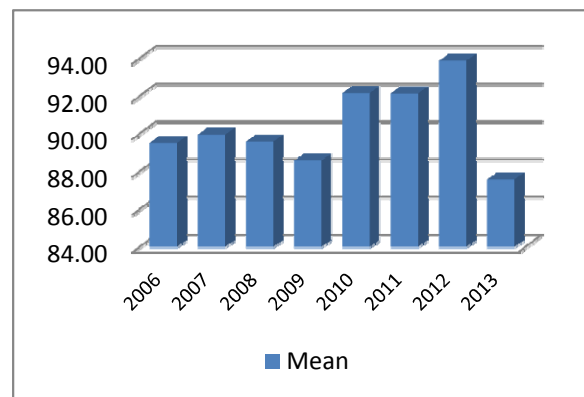
**Average Incarceration Length - Class C - Standard Offenders**

	Mean	Median	Standard Deviation	N
2006	48.23	48.00	14.52	5,473
2007	48.95	48.00	15.48	5,692
2008	49.46	48.00	15.50	5,612
2009	49.79	48.00	15.44	5,336
2010	49.30	48.00	16.12	5,554
2011	49.52	48.00	15.92	5,367
2012	50.24	48.00	17.02	4,513
2013	51.48	48.00	16.87	1,748



**Average Incarceration Length - Class C - Multiple Offenders**

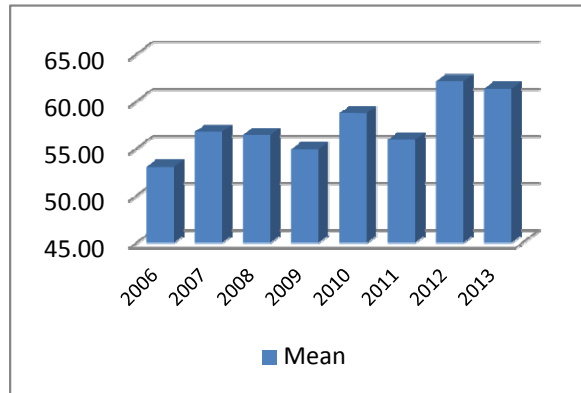
	Mean	Median	Standard Deviation	N
2006	89.52	84.00	19.57	645
2007	89.96	84.00	20.19	690
2008	89.59	96.00	19.83	654
2009	88.60	84.00	20.72	820
2010	92.16	96.00	21.27	845
2011	92.14	96.00	21.94	808
2012	93.88	96.00	22.48	871
2013	87.58	84.00	20.89	357



### Average Incarceration Lengths in Months by Felony Class and Offense

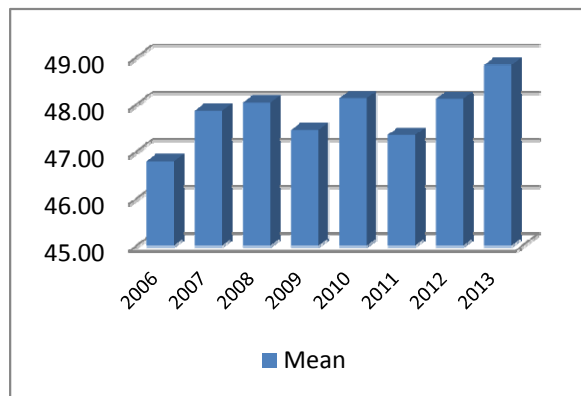
**Average Incarceration Length - Aggravated Burglary - All Offenders**

	Mean	Median	Standard Deviation	N
2006	53.06	48.00	22.54	1,407
2007	56.76	48.00	27.37	1,512
2008	56.43	48.00	26.45	1,423
2009	54.94	48.00	24.19	1,548
2010	58.74	48.00	29.06	1,903
2011	55.91	48.00	25.71	1,832
2012	62.14	48.00	32.13	1,735
2013	61.34	48.00	32.20	669



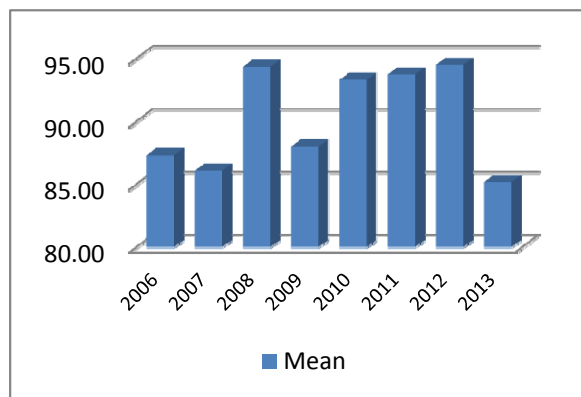
**Average Incarceration Length - Aggravated Burglary - Standard Offenders**

	Mean	Median	Standard Deviation	N
2006	46.80	48.00	12.83	1,209
2007	47.87	48.00	13.53	1,259
2008	48.04	48.00	13.86	1,199
2009	47.46	39.02	14.49	1,288
2010	48.13	48.00	14.38	1,542
2011	47.35	40.00	13.67	1,524
2012	48.12	48.00	14.18	1,308
2013	48.84	48.00	15.22	509



**Average Incarceration Length - Aggravated Burglary - Multiple Offenders**

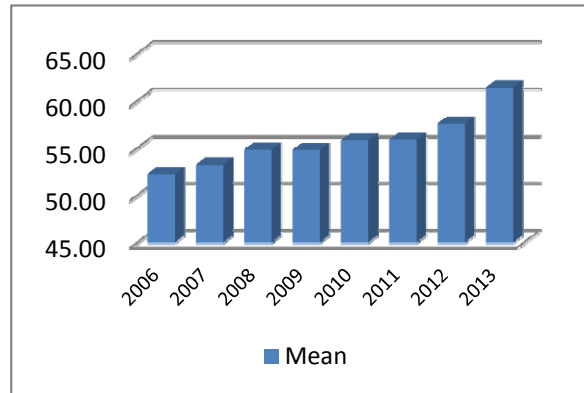
	Mean	Median	Standard Deviation	N
2006	87.31	84.00	16.38	153
2007	86.08	72.00	19.02	157
2008	94.35	96.00	18.26	147
2009	88.01	84.00	19.31	205
2010	93.30	96.00	18.50	276
2011	93.73	96.00	19.37	222
2012	94.49	96.00	21.45	293
2013	85.18	84.00	16.18	112



### Average Incarceration Lengths in Months by Felony Class and Offense

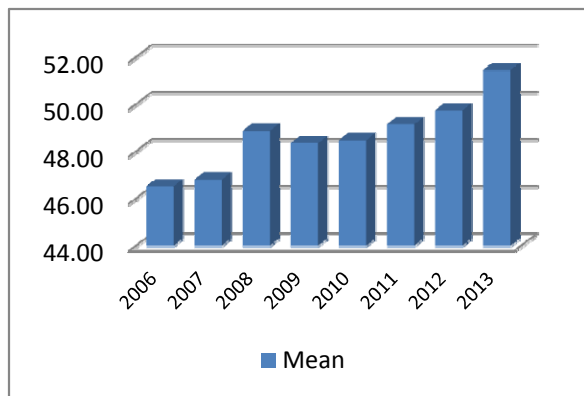
**Average Incarceration Length - Aggravated Assault - All Offenders**

	Mean	Median	Standard Deviation	N
2006	52.26	48.00	22.45	997
2007	53.24	48.00	23.99	1,067
2008	54.84	48.00	23.99	1,048
2009	54.81	48.00	24.28	1,079
2010	55.84	48.00	26.00	960
2011	55.91	48.00	26.64	903
2012	57.61	48.00	28.04	830
2013	61.42	60.00	30.83	376



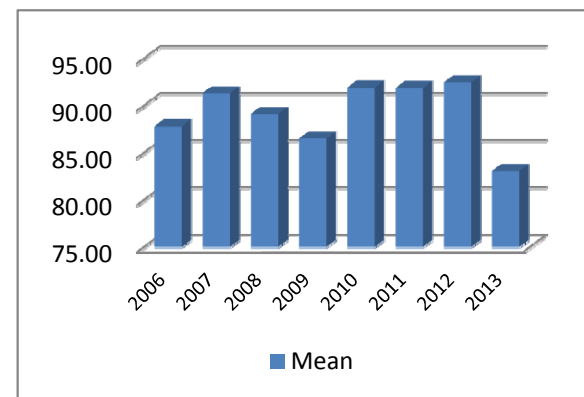
**Average Incarceration Length - Aggravated Assault - Standard Offenders**

	Mean	Median	Standard Deviation	N
2006	46.52	36.00	13.84	869
2007	46.81	36.00	15.48	900
2008	48.88	48.00	14.80	914
2009	48.35	48.00	14.69	905
2010	48.47	36.00	15.49	816
2011	49.15	48.00	15.57	784
2012	49.74	48.00	16.79	702
2013	51.46	48.00	16.24	294



**Average Incarceration Length - Aggravated Assault - Multiple Offenders**

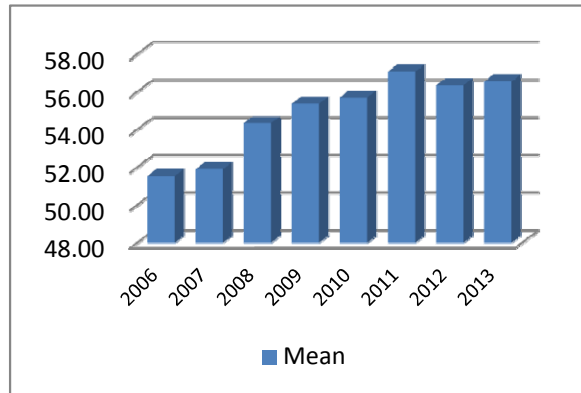
	Mean	Median	Standard Deviation	N
2006	87.80	84.00	18.22	101
2007	91.30	96.00	19.71	135
2008	89.10	96.00	19.23	106
2009	86.50	84.00	22.03	133
2010	91.91	96.00	21.60	108
2011	91.85	96.00	20.34	82
2012	92.46	96.00	22.40	101
2013	83.06	72.00	23.22	62



### Average Incarceration Lengths in Months by Felony Class and Offense

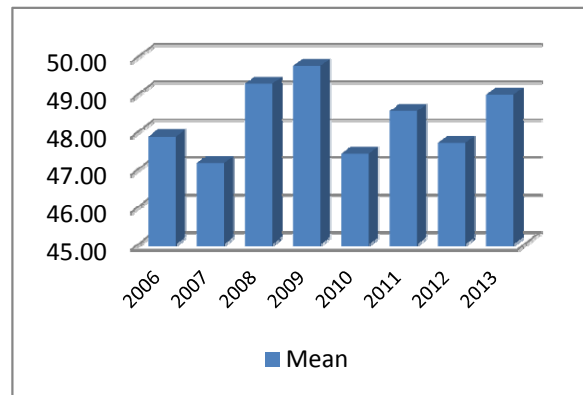
**Average Incarceration Length - Schedule II  
Cocaine < 1/2 Gram - All Offenders**

	Mean	Median	Standard Deviation	N
2006	51.54	48.00	20.37	1,108
2007	51.90	48.00	21.11	1,249
2008	54.34	48.00	22.45	1,542
2009	55.37	48.00	20.96	1,178
2010	55.70	48.00	25.97	1,122
2011	57.09	48.00	26.85	1,038
2012	56.35	48.00	25.99	626
2013	56.55	48.00	25.99	112



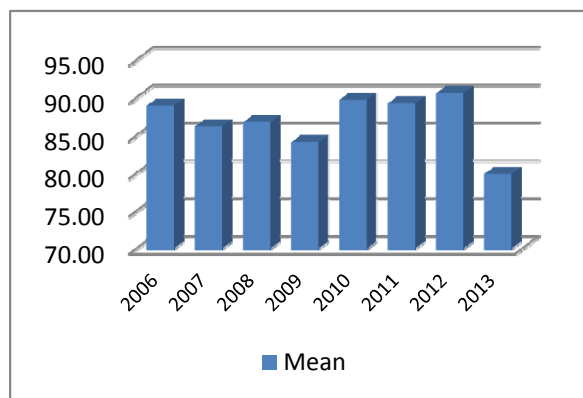
**Average Incarceration Length - Schedule II  
Cocaine < 1/2 Gram - Standard Offenders**

	Mean	Median	Standard Deviation	N
2006	47.87	42.00	14.77	983
2007	47.17	36.00	13.87	1,098
2008	49.28	48.00	14.99	1,325
2009	49.76	48.00	14.39	990
2010	47.42	36.00	13.87	919
2011	48.55	48.00	15.17	851
2012	47.70	48.00	14.63	487
2013	48.99	48.00	13.84	93



**Average Incarceration Length - Schedule II  
Cocaine < 1/2 Gram - Multiple Offenders**

	Mean	Median	Standard Deviation	N
2006	88.91	84.00	22.84	96
2007	86.17	73.00	20.00	121
2008	86.72	96.00	18.93	160
2009	84.09	84.00	17.39	160
2010	89.70	84.00	20.80	162
2011	89.22	75.00	26.26	151
2012	90.57	84.00	24.34	108
2013	79.86	72.50	21.31	14

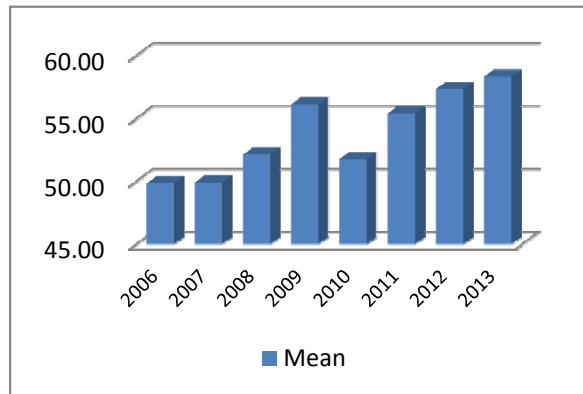




### Average Incarceration Lengths in Months by Felony Class and Offense

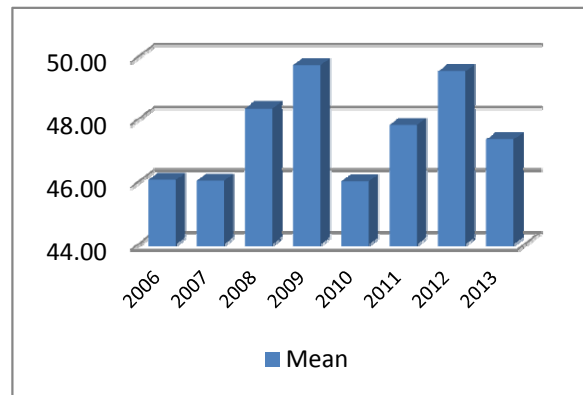
**Average Incarceration Length - Schedule II Drugs:  
Max \$100,000 Fine - All Offenders**

	Mean	Median	Standard Deviation	N
2006	49.83	48.00	19.34	654
2007	49.91	36.00	19.73	500
2008	52.12	48.00	20.23	496
2009	56.13	48.00	22.33	475
2010	51.76	48.00	22.54	492
2011	55.40	48.00	25.52	561
2012	57.32	48.00	25.53	595
2013	58.34	48.00	25.40	238



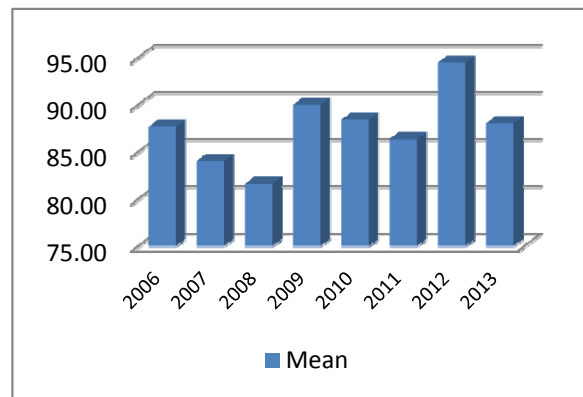
**Average Incarceration Length - Schedule II Drugs:  
Max \$100,000 Fine - Standard Offenders**

	Mean	Median	Standard Deviation	N
2006	46.06	36.00	13.03	594
2007	46.03	36.00	13.76	454
2008	48.35	48.00	15.20	449
2009	49.73	48.00	14.50	397
2010	46.02	36.00	13.42	427
2011	47.82	42.00	15.01	466
2012	49.54	48.00	16.70	502
2013	47.36	36.00	14.80	177



**Average Incarceration Length - Schedule II Drugs:  
Max \$100,000 Fine - Multiple Offenders**

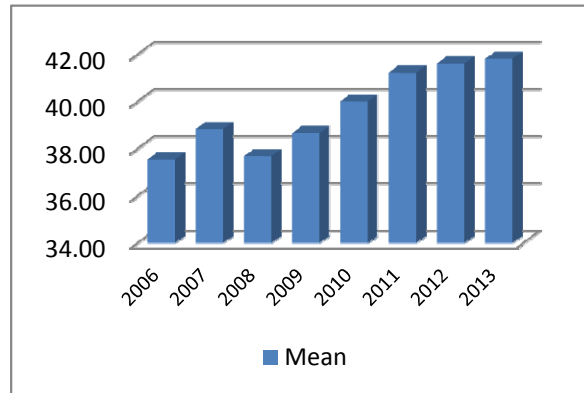
	Mean	Median	Standard Deviation	N
2006	87.65	72.00	20.38	46
2007	84.03	72.00	20.49	38
2008	81.62	73.00	16.74	39
2009	90.00	84.00	22.52	72
2010	88.41	90.00	21.07	56
2011	86.38	72.00	19.06	79
2012	94.46	96.00	22.06	78
2013	88.04	84.00	21.50	57



### Average Incarceration Lengths in Months by Felony Class and Offense

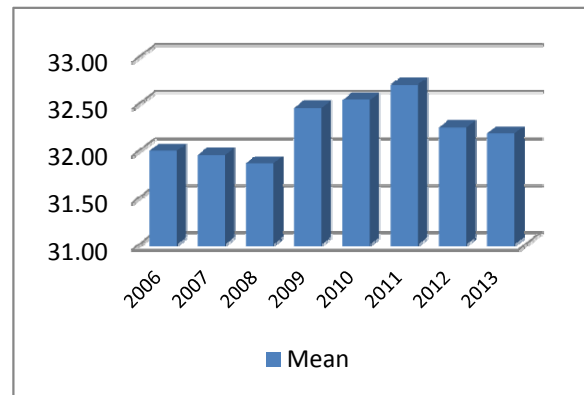
**Average Incarceration Length -  
Class D - All Offenders**

	Mean	Median	Standard Deviation	N
2006	37.55	36.00	19.43	5,693
2007	38.84	36.00	22.36	5,851
2008	37.68	36.00	20.68	5,936
2009	38.67	36.00	21.17	6,027
2010	40.02	36.00	22.98	6,522
2011	41.23	36.00	24.30	6,282
2012	41.62	36.00	24.99	5,722
2013	41.82	36.00	25.15	2,100



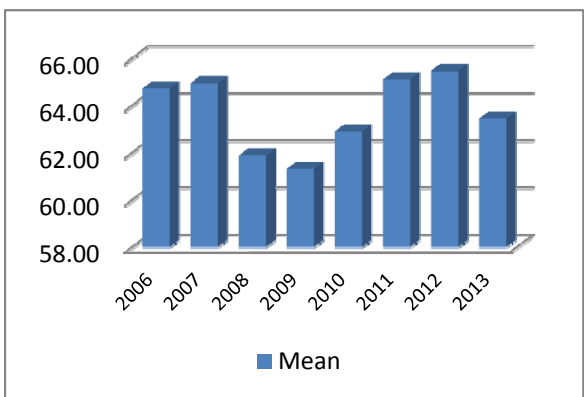
**Average Incarceration Length -  
Class D - Standard Offenders**

	Mean	Median	Standard Deviation	N
2006	32.00	24.03	9.86	4,883
2007	31.95	24.00	10.09	4,960
2008	31.87	24.00	10.00	5,072
2009	32.46	24.03	10.36	5,088
2010	32.54	24.03	10.43	5,375
2011	32.71	24.03	11.83	5,048
2012	32.25	24.03	10.31	4,505
2013	32.18	24.03	9.98	1,644



**Average Incarceration Length -  
Class D - Multiple Offenders**

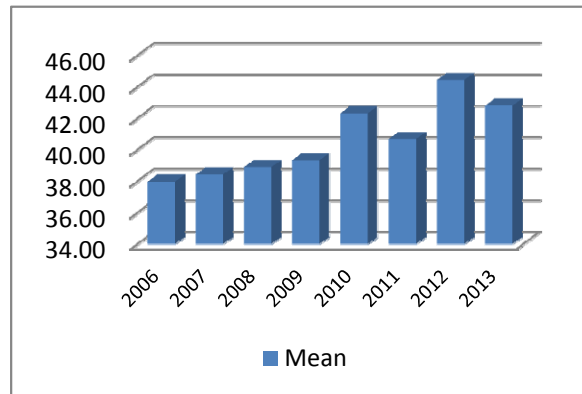
	Mean	Median	Standard Deviation	N
2006	64.71	60.00	19.58	681
2007	64.94	60.00	17.60	680
2008	61.88	60.00	17.84	642
2009	61.31	60.00	17.96	720
2010	62.90	60.00	18.36	836
2011	65.10	60.00	17.44	912
2012	65.47	60.00	19.21	904
2013	63.44	60.00	18.33	323



### Average Incarceration Lengths in Months by Felony Class and Offense

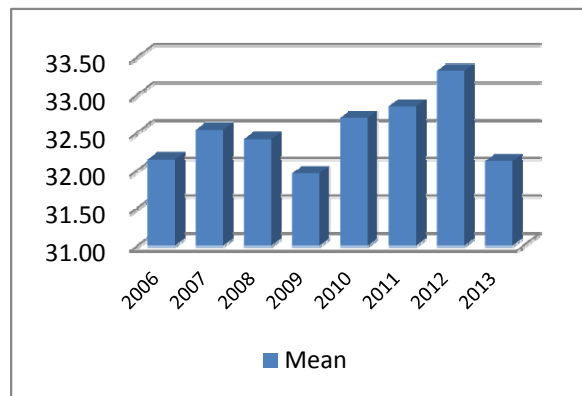
**Average Incarceration Length - Theft: \$1,000 to \$10,000 - All Offenders**

	Mean	Median	Standard Deviation	N
2006	37.97	36.00	19.88	1,847
2007	38.42	36.00	20.64	1,778
2008	38.89	36.00	21.40	1,851
2009	39.33	36.00	23.15	1,914
2010	42.33	36.00	25.73	1,925
2011	40.68	36.00	22.88	1,869
2012	44.43	36.00	26.71	1,875
2013	42.82	36.00	26.11	721



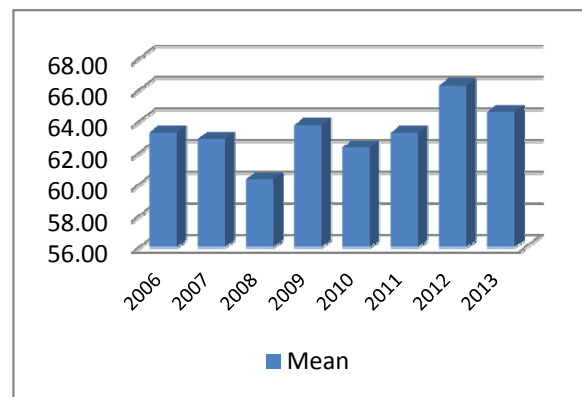
**Average Incarceration Length - Theft: \$1,000 to \$10,000 - Standard Offenders**

	Mean	Median	Standard Deviation	N
2006	32.14	24.00	9.88	1,576
2007	32.54	24.03	10.15	1,521
2008	32.41	24.03	10.18	1,539
2009	31.96	24.00	10.01	1,602
2010	32.69	24.03	10.21	1,519
2011	32.85	24.03	11.45	1,506
2012	33.32	25.00	10.38	1,416
2013	32.12	24.03	9.78	549



**Average Incarceration Length - Theft: \$1,000 to \$10,000 - Multiple Offenders**

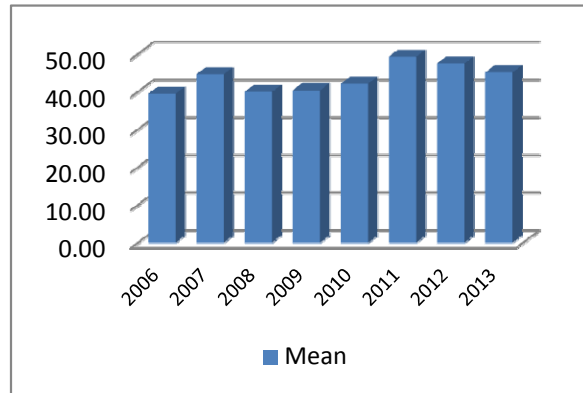
	Mean	Median	Standard Deviation	N
2006	63.28	60.00	18.24	213
2007	62.86	60.00	18.95	206
2008	60.31	57.00	16.84	242
2009	63.76	60.00	19.62	233
2010	62.34	60.00	17.84	280
2011	63.26	60.00	16.46	277
2012	66.27	60.00	19.47	336
2013	64.59	60.00	19.63	123



### Average Incarceration Lengths in Months by Felony Class and Offense

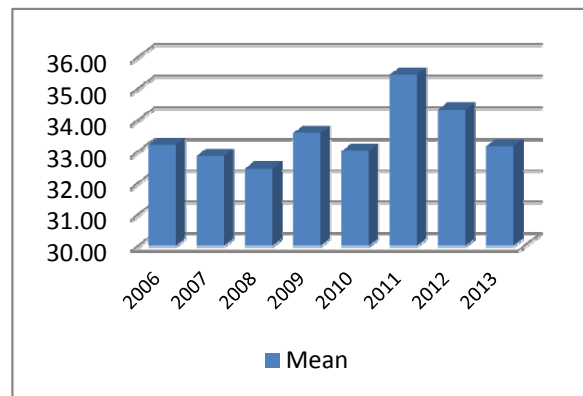
**Average Incarceration Length - Burglary Other Than Habitation - All Offenders**

	Mean	Median	Standard Deviation	N
2006	39.50	36.00	20.89	1,088
2007	44.65	36.00	28.26	1,044
2008	39.97	36.00	24.21	1,077
2009	40.40	36.00	22.11	1,008
2010	42.15	36.00	24.14	928
2011	49.30	42.00	29.65	1,112
2012	47.48	36.00	28.24	849
2013	45.17	36.00	26.46	299



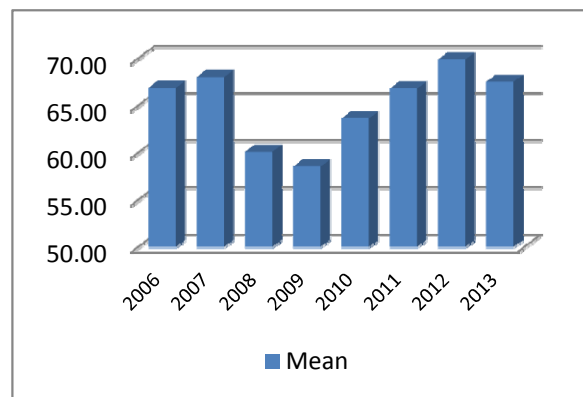
**Average Incarceration Length - Burglary Other Than Habitation - Standard Offenders**

	Mean	Median	Standard Deviation	N
2006	33.20	36.00	10.02	916
2007	32.86	24.33	10.08	811
2008	32.46	24.03	10.05	900
2009	33.58	36.00	10.54	832
2010	33.01	24.03	10.77	726
2011	35.43	36.00	15.98	769
2012	34.32	36.00	10.98	618
2013	33.16	36.00	10.08	219



**Average Incarceration Length - Burglary Other Than Habitation - Multiple Offenders**

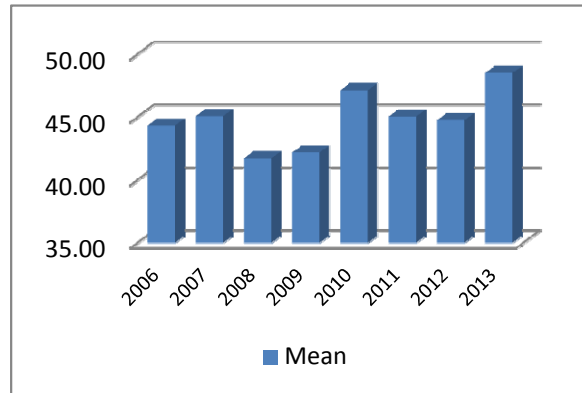
	Mean	Median	Standard Deviation	N
2006	66.90	60.00	21.00	144
2007	68.03	72.00	17.80	165
2008	60.10	48.00	16.37	119
2009	58.55	48.00	16.06	128
2010	63.66	60.00	17.35	145
2011	66.81	72.00	15.03	255
2012	69.90	72.00	20.74	160
2013	67.52	72.00	17.74	63



### Average Incarceration Lengths in Months by Felony Class and Offense

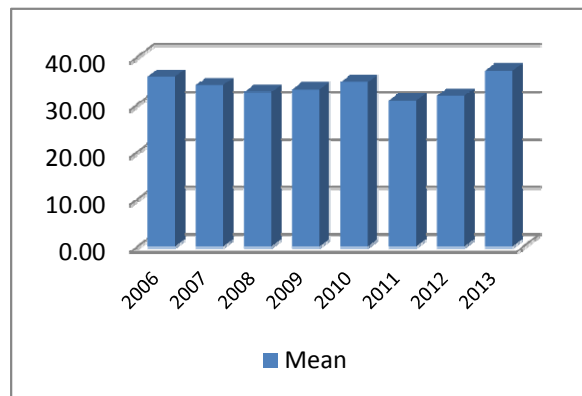
**Average Incarceration Length -  
Identity Theft - All Offenders**

	Mean	Median	Standard Deviation	N
2006	44.32	36.00	22.77	626
2007	45.08	36.00	25.95	451
2008	41.73	36.00	23.33	535
2009	42.18	36.00	23.41	524
2010	47.14	48.00	25.79	495
2011	45.04	36.00	30.46	431
2012	44.75	36.00	27.21	384
2013	48.51	48.00	24.89	152



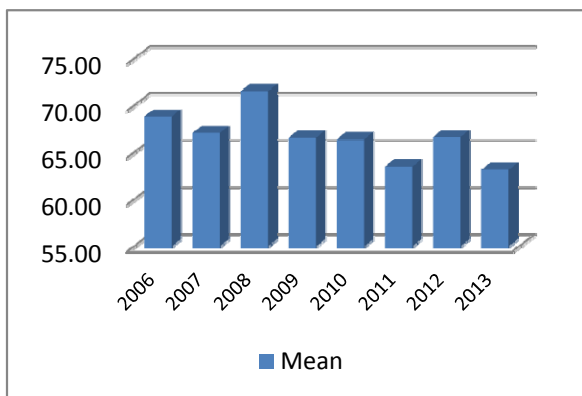
**Average Incarceration Length - Identity Theft -  
Standard Offenders**

	Mean	Median	Standard Deviation	N
2006	35.83	36.00	9.37	490
2007	34.05	36.00	9.48	344
2008	32.60	24.52	9.68	432
2009	33.16	30.00	10.22	419
2010	34.69	36.00	10.42	343
2011	30.83	24.00	10.18	312
2012	31.83	24.00	10.27	273
2013	37.15	36.00	10.98	105



**Average Incarceration Length - Identity Theft -  
Multiple Offenders**

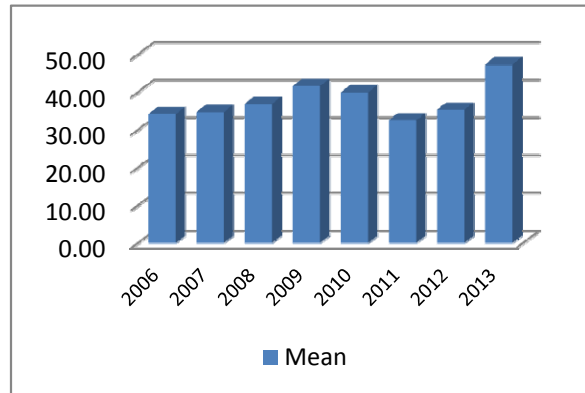
	Mean	Median	Standard Deviation	N
2006	68.83	60.00	21.18	125
2007	67.08	72.00	12.85	83
2008	71.55	72.00	20.07	80
2009	66.60	60.00	18.00	80
2010	66.44	72.00	19.75	123
2011	63.51	60.00	20.89	79
2012	66.67	66.00	17.05	90
2013	63.17	60.00	15.94	36



### Average Incarceration Lengths in Months by Felony Class and Offense

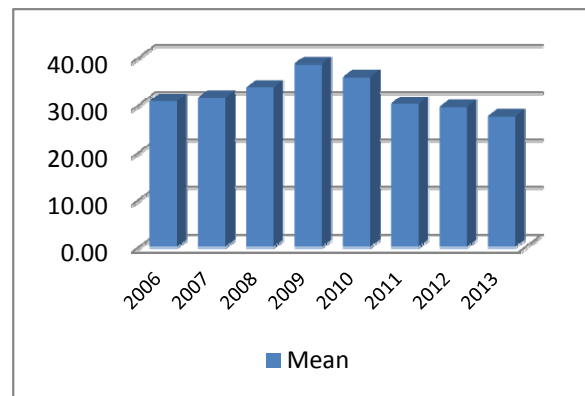
**Average Incarceration Length - Obtain Drugs by Fraud - All Offenders**

	Mean	Median	Standard Deviation	N
2006	34.19	24.03	14.29	220
2007	34.73	36.00	16.66	405
2008	36.92	36.00	14.71	222
2009	41.61	48.00	14.13	261
2010	39.96	36.00	18.27	238
2011	32.63	24.00	13.42	114
2012	35.38	24.00	16.29	202
2013	47.43	26.00	38.23	44



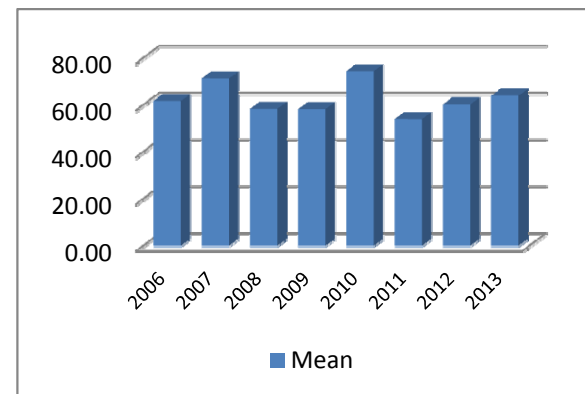
**Average Incarceration Length - Obtain Drugs by Fraud - Standard Offenders**

	Mean	Median	Standard Deviation	N
2006	30.80	24.00	9.37	197
2007	31.48	24.00	9.01	380
2008	33.63	30.00	10.12	195
2009	38.67	48.00	11.51	227
2010	35.87	36.00	9.71	221
2011	30.28	24.00	9.00	105
2012	29.60	24.00	8.57	164
2013	27.61	24.00	5.75	33



**Average Incarceration Length - Obtain Drugs by Fraud - Multiple Offenders**

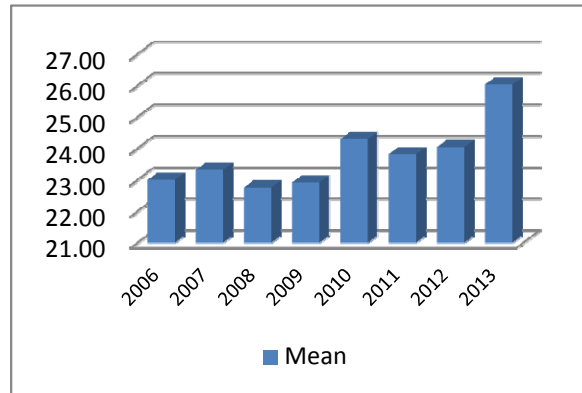
	Mean	Median	Standard Deviation	N
2006	61.73	60.00	15.02	22
2007	71.29	60.00	21.83	17
2008	58.35	48.00	16.69	26
2009	58.26	60.00	10.18	31
2010	74.40	72.00	21.47	5
2011	54.00	48.00	10.04	6
2012	60.32	48.00	18.19	38
2013	64.00	72.00	13.86	3



### Average Incarceration Lengths in Months by Felony Class and Offense

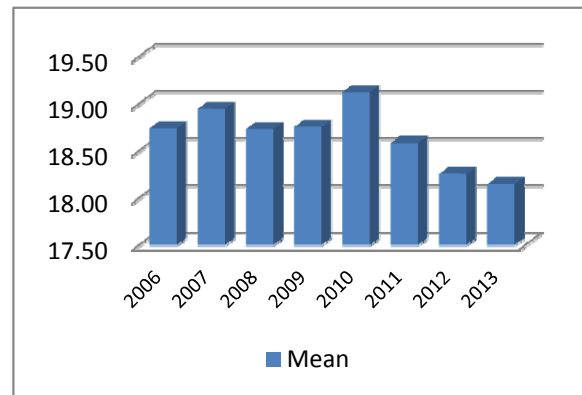
**Average Incarceration Length -  
Class E - All Offenders**

	Mean	Median	Standard Deviation	N
2006	23.00	24.00	12.41	9,342
2007	23.32	24.00	12.49	9,640
2008	22.76	24.00	12.04	9,176
2009	22.92	24.00	12.16	8,774
2010	24.30	24.00	13.66	8,150
2011	23.82	24.00	13.57	7,842
2012	24.04	24.00	13.63	6,578
2013	26.04	24.00	16.26	2,592



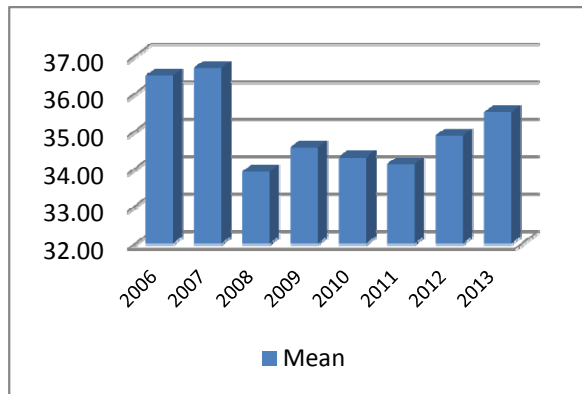
**Average Incarceration Length -  
Class E - Standard Offenders**

	Mean	Median	Standard Deviation	N
2006	18.74	24.00	6.11	7,608
2007	18.94	24.00	6.40	7,711
2008	18.73	24.00	6.31	7,338
2009	18.75	24.00	6.07	7,034
2010	19.12	24.00	6.45	6,266
2011	18.58	24.00	6.47	5,959
2012	18.25	18.00	6.19	4,832
2013	18.15	18.00	6.49	1,782



**Average Incarceration Length -  
Class E - Multiple Offenders**

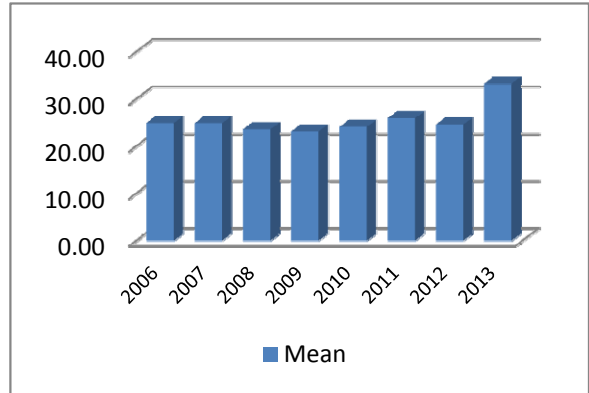
	Mean	Median	Standard Deviation	N
2006	36.47	36.00	10.27	1,308
2007	36.68	36.00	10.67	1,606
2008	33.92	36.00	10.56	1,422
2009	34.56	36.00	10.25	1,356
2010	34.31	36.00	10.53	1,355
2011	34.12	36.00	10.46	1,404
2012	34.88	36.00	10.61	1,354
2013	35.50	36.00	10.72	573



### Average Incarceration Lengths in Months by Felony Class and Offense

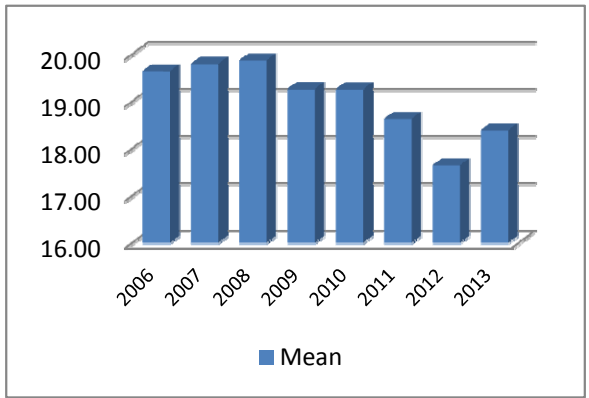
**Average Incarceration Length - Forgery: Up to \$1,000 - All Offenders**

	Mean	Median	Standard Deviation	N
2006	24.95	24.00	13.67	3,085
2007	24.91	24.00	13.60	2,902
2008	23.60	24.00	11.85	2,672
2009	23.16	24.00	12.07	2,275
2010	24.14	24.00	12.64	1,697
2011	25.96	24.00	15.86	1,282
2012	24.64	24.00	14.72	940
2013	33.29	24.00	21.15	366



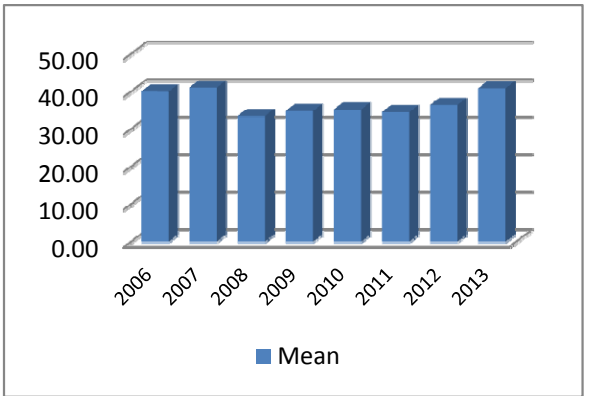
**Average Incarceration Length - Forgery: Up to \$1,000 - Standard Offenders**

	Mean	Median	Standard Deviation	N
2006	19.64	24.00	5.68	2,499
2007	19.80	24.00	6.66	2,347
2008	19.87	24.00	6.07	2,175
2009	19.27	24.00	5.45	1,889
2010	19.26	24.00	6.16	1,321
2011	18.63	24.00	6.71	917
2012	17.65	12.00	6.02	677
2013	18.39	24.00	6.03	210



**Average Incarceration Length - Forgery: Up to \$1,000 - Multiple Offenders**

	Mean	Median	Standard Deviation	N
2006	40.03	48.00	9.39	374
2007	41.09	48.00	9.10	449
2008	33.52	30.00	10.75	375
2009	34.83	36.00	10.05	293
2010	35.25	36.00	10.80	271
2011	34.54	36.00	11.07	232
2012	36.46	36.00	10.28	199
2013	40.91	42.00	8.09	82

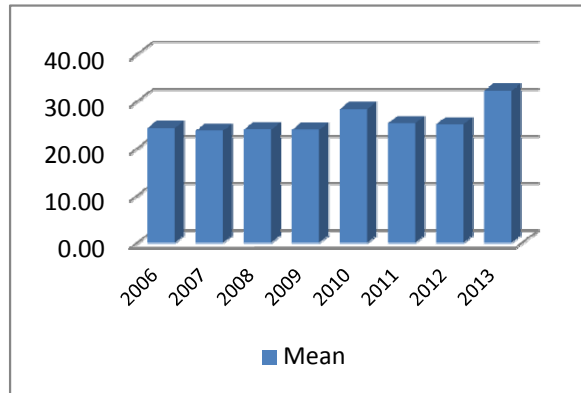




### Average Incarceration Lengths in Months by Felony Class and Offense

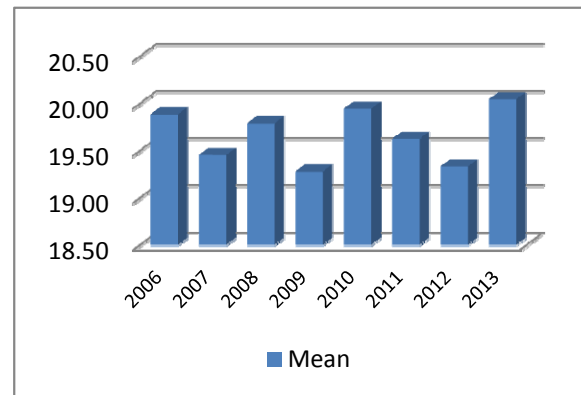
**Average Incarceration Length - Burglary: Auto - All Offenders**

	Mean	Median	Standard Deviation	N
2006	24.35	24.00	12.60	929
2007	23.74	24.00	11.95	1,106
2008	24.00	24.00	11.52	1,098
2009	23.96	24.00	12.43	1,051
2010	28.38	24.00	17.28	1,218
2011	25.33	24.00	14.20	1,419
2012	25.11	24.00	12.90	1,126
2013	32.28	24.00	20.00	330



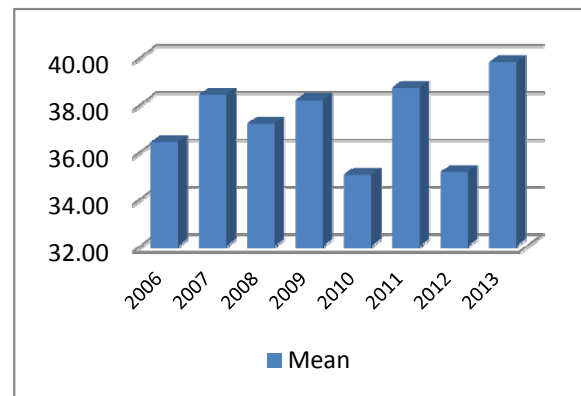
**Average Incarceration Length - Burglary: Auto - Standard Offenders**

	Mean	Median	Standard Deviation	N
2006	19.89	24.00	5.67	749
2007	19.45	24.00	6.26	881
2008	19.79	24.00	5.87	873
2009	19.28	24.00	6.14	840
2010	19.95	24.00	5.88	858
2011	19.63	24.00	6.85	1,101
2012	19.33	24.00	5.85	811
2013	20.04	24.00	8.97	201



**Average Incarceration Length - Burglary: Auto - Multiple Offenders**

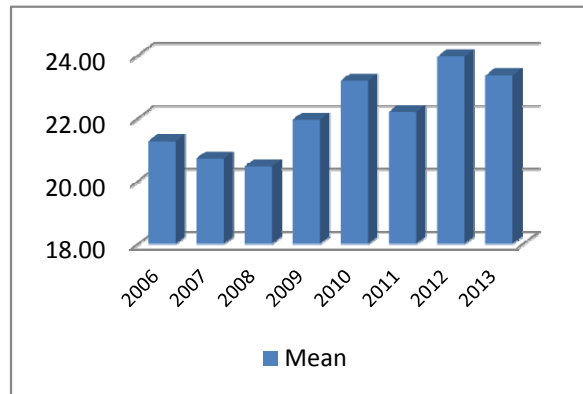
	Mean	Median	Standard Deviation	N
2006	36.42	36.00	10.83	135
2007	38.42	48.00	11.91	196
2008	37.20	36.00	10.44	189
2009	38.20	36.00	10.42	160
2010	35.04	36.00	10.59	206
2011	38.72	39.00	10.36	234
2012	35.15	36.00	10.56	245
2013	39.80	48.00	10.75	79



### Average Incarceration Lengths in Months by Felony Class and Offense

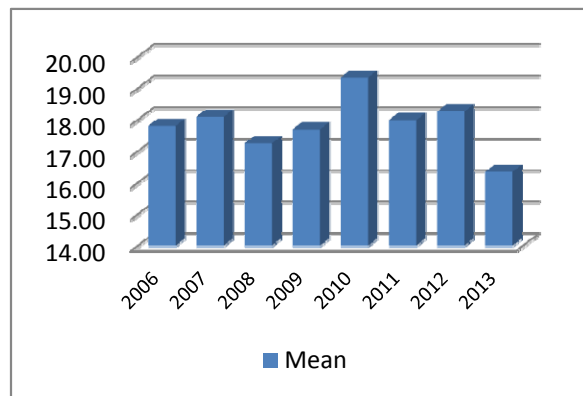
**Average Incarceration Length - Theft: \$500 - \$1,000  
- All Offenders**

	Mean	Median	Standard Deviation	N
2006	21.27	24.00	11.80	801
2007	20.72	24.00	10.26	821
2008	20.47	18.00	11.56	920
2009	21.95	24.00	12.87	926
2010	23.20	24.00	12.77	973
2011	22.21	24.00	12.54	946
2012	23.96	24.00	14.50	885
2013	23.36	18.00	15.63	371



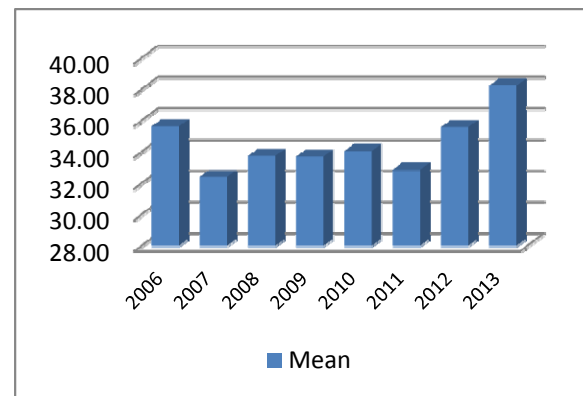
**Average Incarceration Length - Theft: \$500 - \$1,000  
- Standard Offenders**

	Mean	Median	Standard Deviation	N
2006	17.81	15.00	6.49	679
2007	18.10	18.00	6.10	704
2008	17.25	12.00	5.95	785
2009	17.70	12.03	6.36	755
2010	19.34	24.00	7.00	797
2011	17.99	18.00	6.12	757
2012	18.26	18.00	6.18	685
2013	16.35	12.00	5.72	281



**Average Incarceration Length - Theft: \$500 - \$1,000  
- Multiple Offenders**

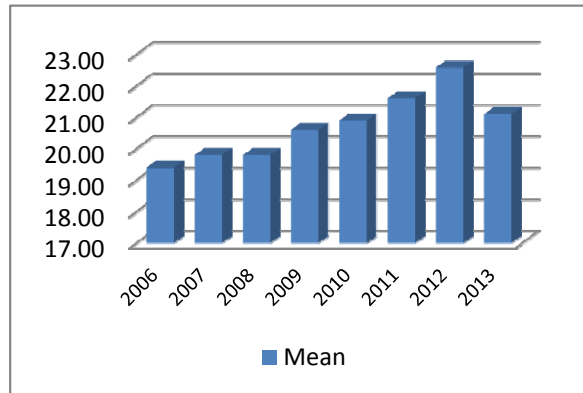
	Mean	Median	Standard Deviation	N
2006	35.64	36.00	10.75	94
2007	32.41	24.02	10.06	98
2008	33.75	27.00	11.46	98
2009	33.71	36.00	10.49	123
2010	34.06	36.00	11.31	130
2011	32.86	24.03	10.14	149
2012	35.59	36.00	10.78	141
2013	38.24	36.00	13.36	62



### Average Incarceration Lengths in Months by Felony Class and Offense

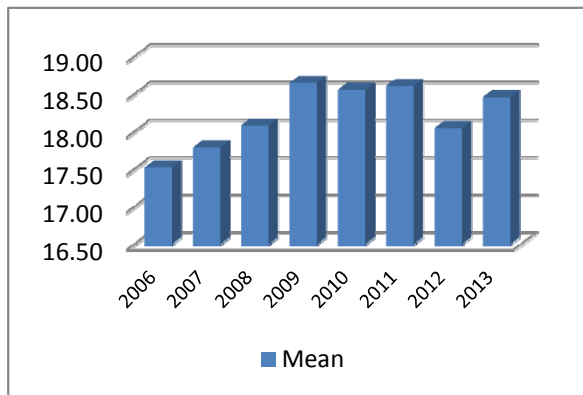
**Average Incarceration Length - Schedule VI Drugs:  
Not < 1/2 Ounce - All Offenders**

	Mean	Median	Standard Deviation	N
2006	19.40	18.00	9.00	499
2007	19.80	18.00	10.47	580
2008	19.80	18.00	9.98	639
2009	20.61	24.00	9.45	577
2010	20.90	24.00	10.15	624
2011	21.60	24.00	10.97	598
2012	22.59	24.00	12.42	533
2013	21.11	24.00	9.10	193



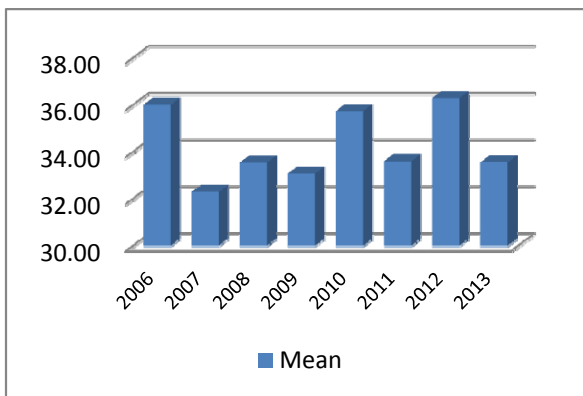
**Average Incarceration Length - Schedule VI Drugs:  
Not < 1/2 Ounce - Standard Offenders**

	Mean	Median	Standard Deviation	N
2006	17.52	12.00	5.93	452
2007	17.79	15.00	6.01	528
2008	18.08	15.00	7.65	574
2009	18.65	24.00	6.08	512
2010	18.56	18.00	6.71	546
2011	18.61	24.00	6.09	506
2012	18.05	18.00	6.19	421
2013	18.46	18.00	5.74	159



**Average Incarceration Length - Schedule VI Drugs:  
Not < 1/2 Ounce - Multiple Offenders**

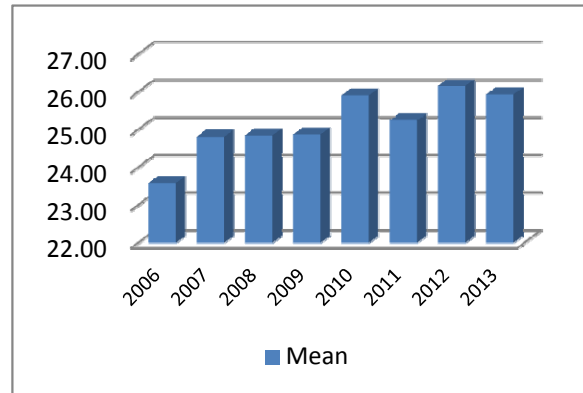
	Mean	Median	Standard Deviation	N
2006	36.00	36.00	9.91	42
2007	32.30	30.00	10.34	34
2008	33.54	35.00	11.24	56
2009	33.07	30.00	10.13	57
2010	35.74	36.00	11.70	68
2011	33.60	36.00	9.66	75
2012	36.29	36.00	10.84	93
2013	33.55	36.00	9.79	29



### Average Incarceration Lengths in Months by Felony Class and Offense

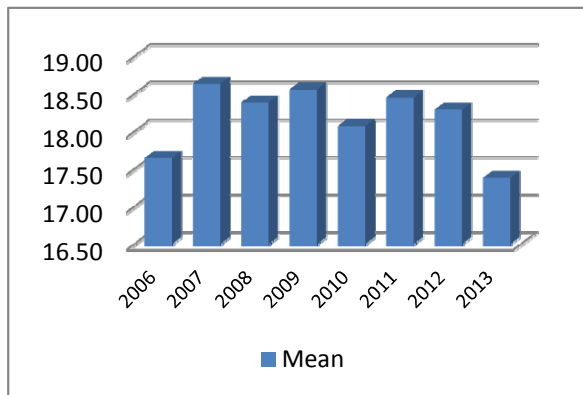
**Average Incarceration Length - Habitual Traffic Offender - All Offenders**

	Mean	Median	Standard Deviation	N
2006	23.58	24.00	12.25	674
2007	24.81	24.00	13.50	591
2008	24.84	24.00	13.88	559
2009	24.87	24.00	13.17	536
2010	25.91	24.00	14.75	425
2011	25.25	24.00	13.67	442
2012	26.16	24.00	15.01	335
2013	25.93	24.00	14.27	148



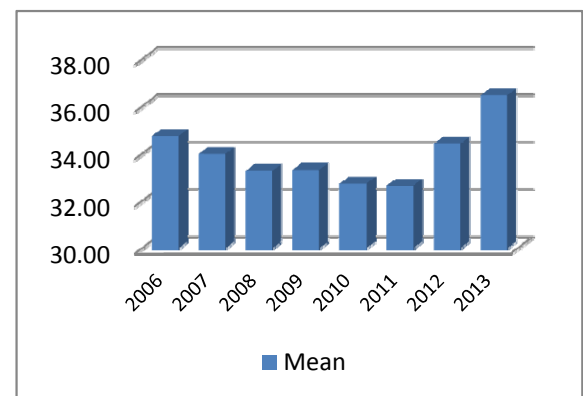
**Average Incarceration Length - Habitual Traffic Offender - Standard Offenders**

	Mean	Median	Standard Deviation	N
2006	17.65	18.00	5.94	465
2007	18.64	18.00	7.04	405
2008	18.39	18.00	5.72	390
2009	18.56	18.00	5.81	363
2010	18.07	18.00	5.80	268
2011	18.46	18.00	6.05	285
2012	18.29	18.00	5.83	212
2013	17.38	18.00	5.53	91



**Average Incarceration Length - Habitual Traffic Offender - Multiple Offenders**

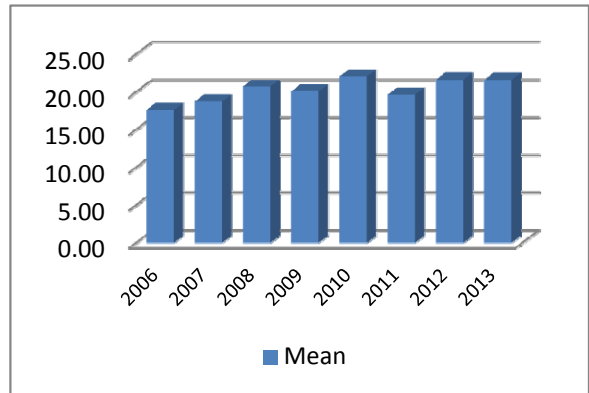
	Mean	Median	Standard Deviation	N
2006	34.76	36.00	9.66	187
2007	34.00	36.00	9.39	154
2008	33.29	36.00	9.51	125
2009	33.33	36.00	9.17	142
2010	32.74	36.00	9.52	122
2011	32.65	36.00	8.90	129
2012	34.43	36.00	9.97	99
2013	36.48	36.00	10.42	50



### Average Incarceration Lengths in Months by Felony Class and Offense

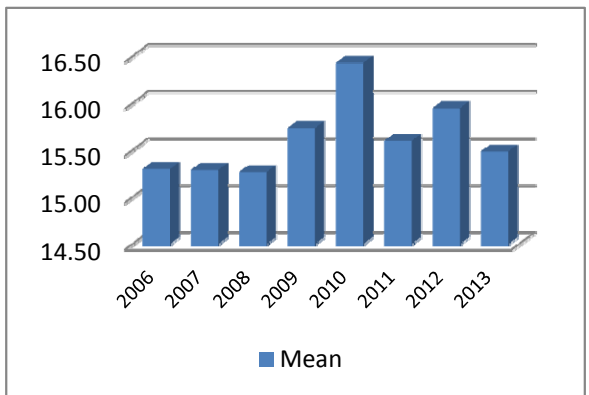
**Average Incarceration Length - Failure to Appear (Felony) - All Offenders**

	Mean	Median	Standard Deviation	N
2006	17.62	12.00	8.89	416
2007	18.73	12.00	10.03	354
2008	20.72	12.00	12.88	354
2009	20.08	12.00	12.83	350
2010	22.04	18.00	14.19	292
2011	19.63	12.00	11.23	293
2012	21.64	18.00	13.27	259
2013	21.61	18.00	14.28	121



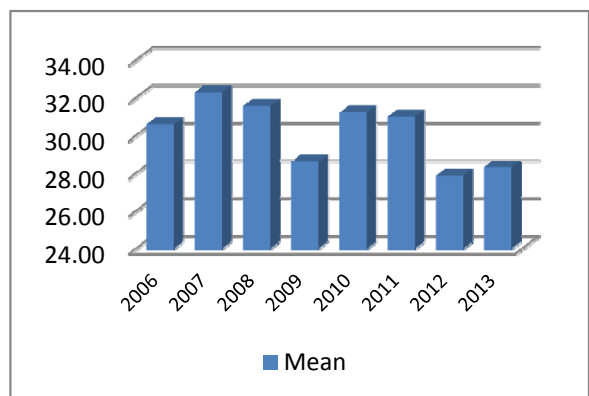
**Average Incarceration Length - Failure to Appear (Felony) - Standard Offenders**

	Mean	Median	Standard Deviation	N
2006	15.30	12.00	5.11	361
2007	15.29	12.00	5.03	288
2008	15.27	12.00	5.16	267
2009	15.74	12.00	5.40	283
2010	16.43	12.00	5.65	223
2011	15.60	12.00	5.40	231
2012	15.95	12.00	5.56	183
2013	15.49	12.00	5.24	86



**Average Incarceration Length - Failure to Appear (Felony) - Multiple Offenders**

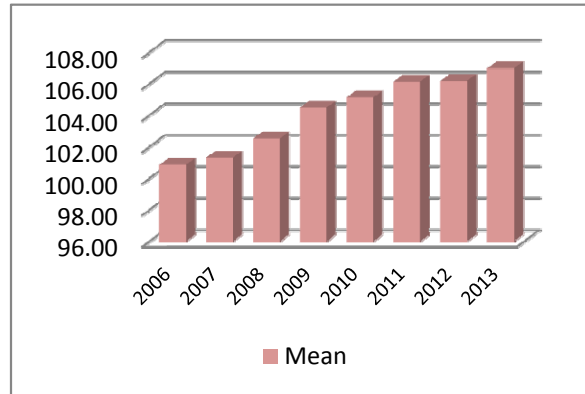
	Mean	Median	Standard Deviation	N
2006	30.58	24.00	8.67	52
2007	32.29	24.00	10.42	63
2008	31.55	24.00	10.59	66
2009	28.60	24.00	8.78	47
2010	31.20	24.00	10.29	50
2011	30.98	24.00	9.98	55
2012	27.86	24.00	6.91	57
2013	28.32	24.00	7.65	25



### Average Probation Lengths in Months by Felony Class

**Average Probation Length -  
Felony Class B - All Offenders**

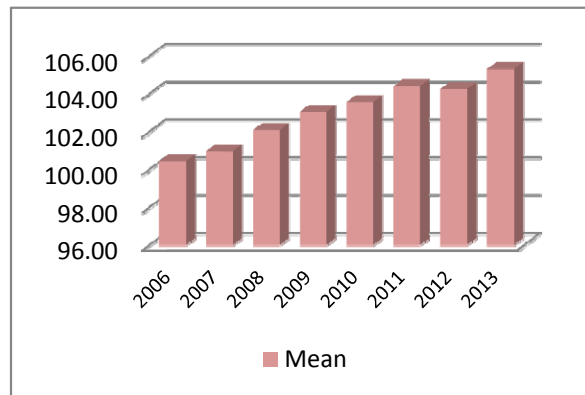
	Mean	Median	Standard Deviation	N
2006	100.87	96.00	19.29	512
2007	101.31	96.00	16.40	636
2008	102.53	96.00	18.82	653
2009	104.49	96.00	21.21	643
2010	105.14	96.00	23.57	685
2011	106.14	96.00	22.01	824
2012	106.18	96.00	22.80	768
2013	107.00	96.00	25.04	453



The table for multiple offenders was not included due to low occurrence frequencies.

**Average Probation Length -  
Felony Class B - Standard**

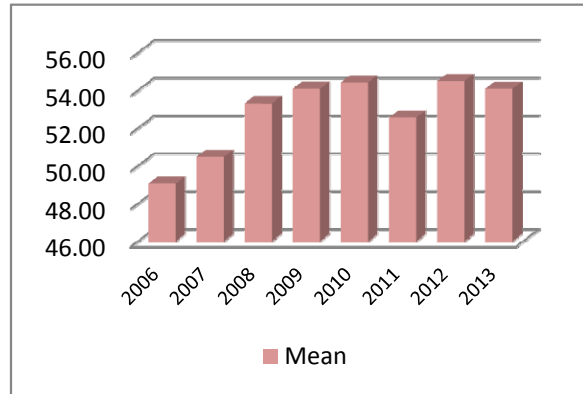
	Mean	Median	Standard Deviation	N
2006	100.44	96.00	18.80	504
2007	100.97	96.00	15.89	629
2008	102.09	96.00	18.27	640
2009	103.06	96.00	19.67	613
2010	103.57	96.00	21.11	667
2011	104.42	96.00	20.08	780
2012	104.25	96.00	18.80	721
2013	105.32	96.00	22.88	431



### Average Probation Lengths in Months by Felony Class

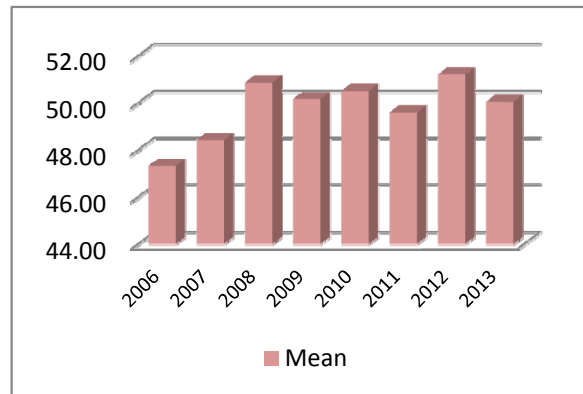
**Average Probation Length - Class C - All Offenders**

	Mean	Median	Standard Deviation	N
2006	49.06	36.00	20.54	2,071
2007	50.48	48.00	20.98	2,359
2008	53.31	48.00	27.07	2,422
2009	54.09	48.00	23.81	2,278
2010	54.43	48.00	23.08	2,441
2011	52.56	48.00	20.00	3,012
2012	54.50	48.00	21.18	3,469
2013	54.09	48.00	22.18	1,900



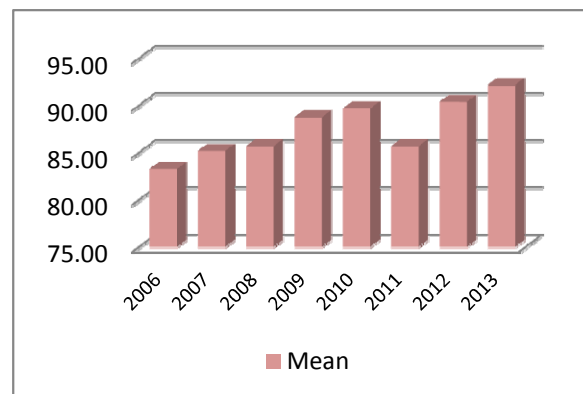
**Average Probation Length - Class C - Standard Offenders**

	Mean	Median	Standard Deviation	N
2006	47.32	36.00	18.97	1,954
2007	48.43	36.00	18.41	2,242
2008	50.87	48.00	25.16	2,265
2009	50.17	48.00	19.59	2,063
2010	50.51	48.00	18.74	2,214
2011	49.61	48.00	16.78	2,775
2012	51.22	48.00	17.24	3,194
2013	50.06	48.00	16.91	1,724



**Average Probation Length - Class C - Multiple Offenders**

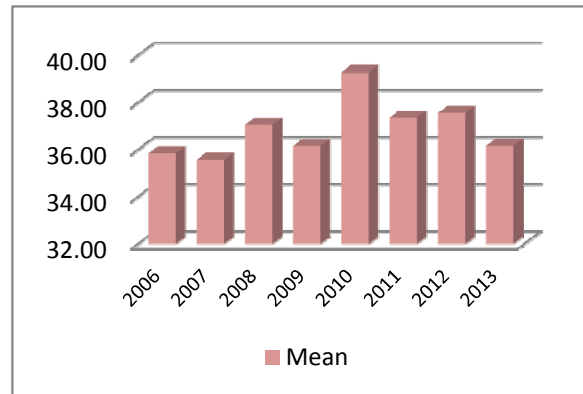
	Mean	Median	Standard Deviation	N
2006	83.27	72.00	17.56	97
2007	85.18	84.00	15.42	88
2008	85.69	84.00	21.38	128
2009	88.76	84.00	22.43	189
2010	89.68	84.00	24.05	200
2011	85.68	73.00	20.90	220
2012	90.39	96.00	22.23	245
2013	92.18	96.00	22.75	153



### Average Probation Lengths in Months by Felony Class

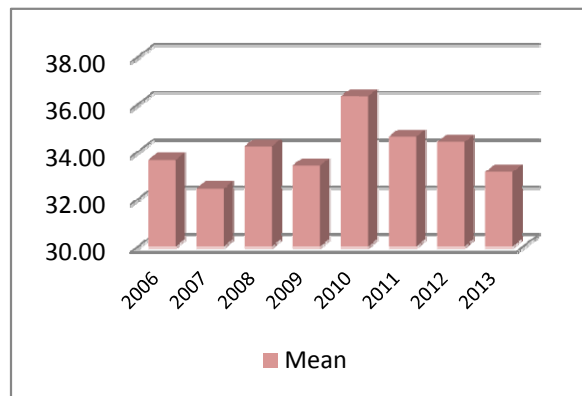
**Average Probation Length - Class  
D - All Offenders**

	Mean	Median	Standard Deviation	N
2006	35.83	36.00	16.60	2,484
2007	35.57	24.03	18.14	2,994
2008	37.04	36.00	20.78	3,160
2009	36.15	36.00	17.30	3,253
2010	39.29	36.00	22.62	3,767
2011	37.35	36.00	17.20	4,227
2012	37.55	36.00	17.00	4,928
2013	36.16	36.00	16.16	2,644



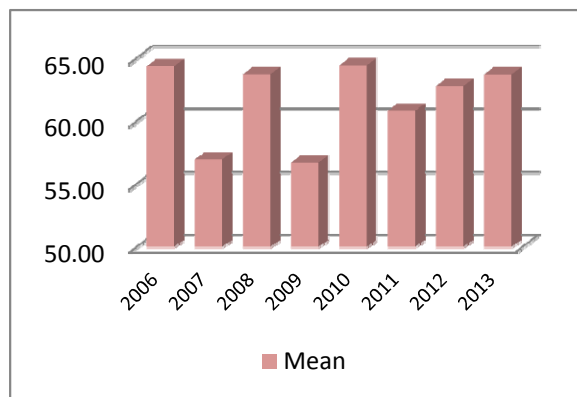
**Average Probation Length - Class  
D - Standard Offenders**

	Mean	Median	Standard Deviation	N
2006	33.66	24.03	13.64	2,333
2007	32.46	24.00	12.81	2,724
2008	34.23	30.00	14.68	2,963
2009	33.42	25.00	13.15	2,991
2010	36.34	36.00	19.09	3,485
2011	34.64	36.00	13.53	3,876
2012	34.41	36.00	12.32	4,472
2013	33.15	36.00	11.01	2,416



**Average Probation Length - Class  
D - Multiple Offenders**

	Mean	Median	Standard Deviation	N
2006	64.37	66.00	14.52	134
2007	56.96	48.00	21.42	215
2008	63.73	60.00	23.72	146
2009	56.73	48.00	18.35	196
2010	64.45	60.00	20.96	211
2011	60.84	60.00	17.33	292
2012	62.81	60.00	19.24	380
2013	63.72	60.00	19.20	197

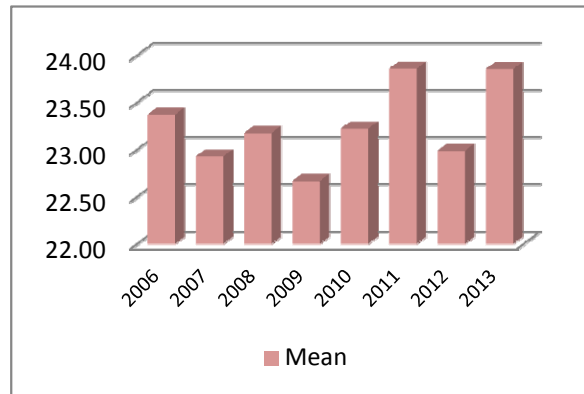




### Average Probation Lengths in Months by Felony Class

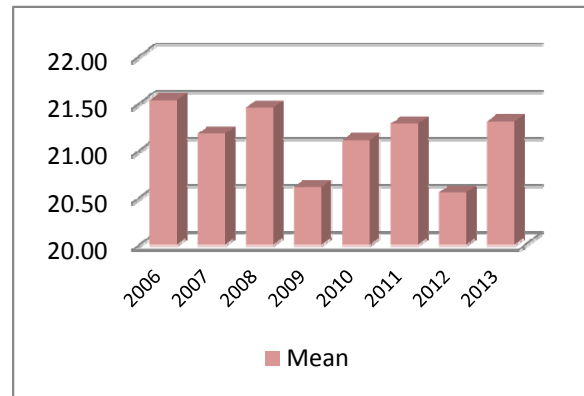
**Average Probation Length - Class E - All Offenders**

	Mean	Median	Standard Deviation	N
2006	23.37	24.00	13.91	4,415
2007	22.93	24.00	13.62	4,612
2008	23.18	24.00	14.71	4,430
2009	22.67	24.00	12.70	4,394
2010	23.22	24.00	12.82	4,454
2011	23.86	24.00	14.50	4,641
2012	22.99	24.00	11.99	5,006
2013	23.85	24.00	13.14	2,685



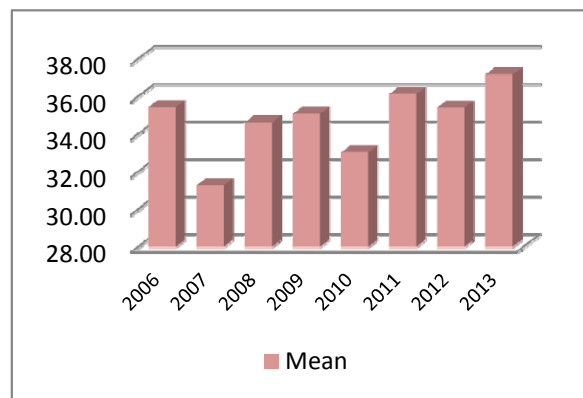
**Average Probation Length - Class E - Standard Offenders**

	Mean	Median	Standard Deviation	N
2006	21.53	24.00	11.59	4,036
2007	21.18	24.00	11.38	4,240
2008	21.45	24.00	12.87	4,037
2009	20.61	24.00	9.98	3,966
2010	21.11	24.00	10.06	3,980
2011	21.28	24.00	12.35	4,041
2012	20.55	24.00	8.78	4,389
2013	21.31	24.00	10.66	2,337



**Average Probation Length - Class E - Multiple Offenders**

	Mean	Median	Standard Deviation	N
2006	35.42	36.00	10.43	295
2007	31.27	24.00	10.14	290
2008	34.62	36.00	10.88	306
2009	35.07	36.00	10.00	334
2010	33.02	30.00	10.08	367
2011	36.13	36.00	10.58	493
2012	35.40	36.00	10.57	504
2013	37.17	36.00	10.89	283

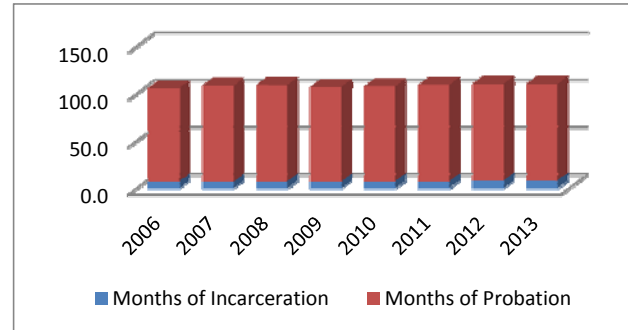


### Average Split Sentence Lengths in Months by Felony Class

**Average Sentence Length - Felony Class B - All Offenders**

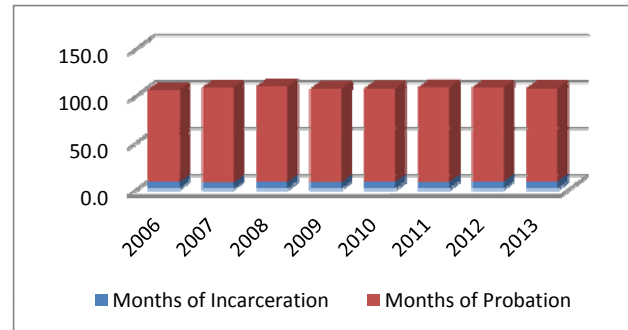
	Months of Incarceration				Months of Probation			
	Mean	Median	Std Dev	N	Mean	Median	Std Dev	N
2006	7.3	6.0	4.3	412	98.4	96.0	27.2	412
2007	7.1	6.0	4.6	533	101.2	96.0	27.7	533
2008	7.3	6.0	4.2	509	101.7	96.0	22.0	509
2009	7.2	6.0	4.2	424	99.9	96.0	16.0	424
2010	7.4	6.0	4.2	464	100.5	96.0	17.9	464
2011	7.2	6.0	4.3	657	102.1	96.0	20.5	657
2012	8.2	9.0	4.0	548	102.1	96.0	21.6	548
2013	8.0	8.0	5.2	268	102.3	96.0	24.2	268

The table for multiple offenders was not included due to low occurrence frequencies.



**Average Sentence Length - Felony Class B - Standard Offenders**

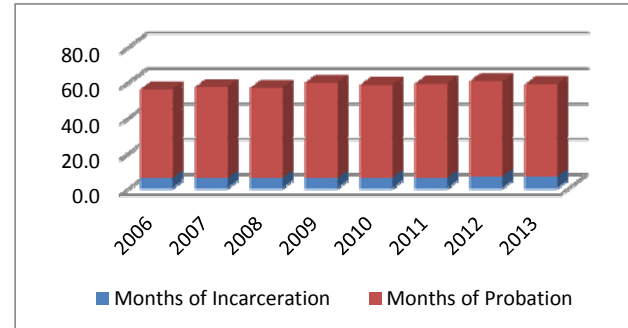
	Months of Incarceration				Months of Probation			
	Mean	Median	Std Dev	N	Mean	Median	Std Dev	N
2006	7.3	6.0	4.3	405	98.4	96.0	27.2	405
2007	6.9	6.0	4.3	522	101.0	96.0	27.5	522
2008	7.3	6.0	4.2	499	101.7	96.0	21.5	499
2009	7.2	6.0	4.2	415	99.5	96.0	15.7	415
2010	7.4	6.0	4.2	453	99.6	96.0	16.9	453
2011	7.2	6.0	4.3	637	100.9	96.0	18.9	637
2012	8.2	9.0	4.0	521	99.8	96.0	18.1	521
2013	7.9	7.0	5.2	253	99.3	96.0	19.6	253



### Average Split Sentence Lengths in Months by Felony Class

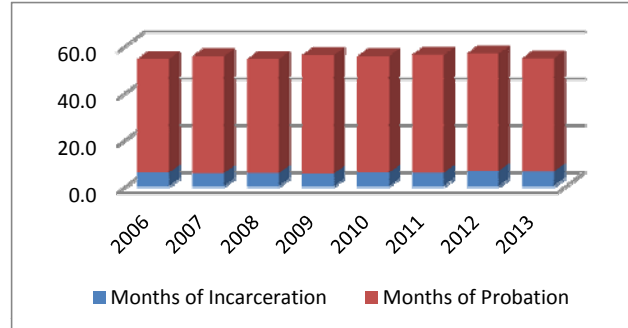
**Average Sentence Length - Class C - All Offenders**

	Months of Incarceration				Months of Probation			
	Mean	Median	Std Dev	N	Mean	Median	Std Dev	N
2006	5.7	4.7	4.1	1,153	49.9	48.0	19.4	1,153
2007	5.5	4.0	4.0	1,246	51.5	48.0	22.1	1,246
2008	5.7	4.9	4.2	1,241	50.9	48.0	21.5	1,241
2009	5.5	4.0	4.2	1,326	53.9	48.0	22.6	1,326
2010	5.9	5.6	4.2	1,538	52.3	48.0	21.0	1,538
2011	5.8	4.9	4.2	1,840	53.2	48.0	21.9	1,840
2012	6.5	6.0	4.1	2,035	53.8	48.0	20.8	2,035
2013	6.5	5.9	4.2	851	52.1	48.0	21.1	851



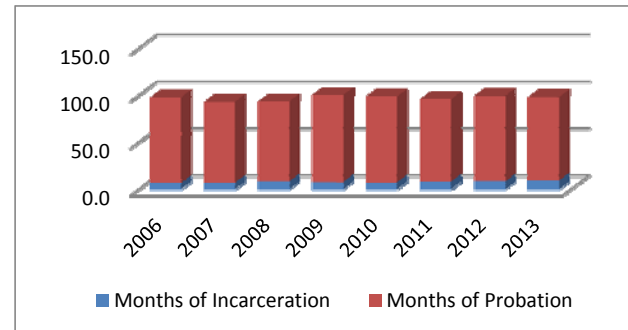
**Average Sentence Length - Class C - Standard Offenders**

	Months of Incarceration				Months of Probation			
	Mean	Median	Std Dev	N	Mean	Median	Std Dev	N
2006	5.7	4.8	4.1	1,109	48.5	48.0	17.3	1,109
2007	5.5	4.0	4.0	1,191	49.8	48.0	20.1	1,191
2008	5.6	4.2	4.2	1,167	48.6	47.0	19.4	1,167
2009	5.3	4.0	4.0	1,214	50.5	48.0	19.2	1,214
2010	5.8	5.1	4.1	1,438	49.5	48.0	17.6	1,438
2011	5.6	4.5	4.1	1,709	50.4	48.0	18.6	1,709
2012	6.4	6.0	4.1	1,868	50.2	48.0	16.4	1,868
2013	6.2	5.9	4.1	772	48.2	48.0	16.7	772



**Average Sentence Length - Class C - Multiple Offenders**

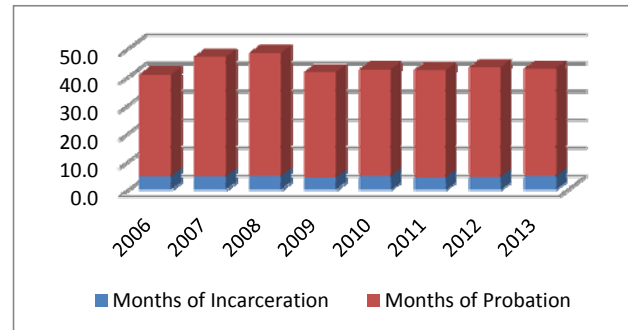
	Months of Incarceration				Months of Probation			
	Mean	Median	Std Dev	N	Mean	Median	Std Dev	N
2006	6.5	4.0	4.5	39	91.1	84.0	27.6	39
2007	6.8	6.0	3.8	50	86.2	72.0	29.5	50
2008	8.3	11.3	4.3	64	85.1	84.0	18.0	64
2009	7.6	8.5	4.9	103	92.7	96.0	20.8	103
2010	7.4	7.4	4.5	93	91.5	96.0	23.1	93
2011	8.2	9.0	4.0	115	87.7	84.0	22.7	115
2012	8.5	10.0	4.0	147	90.9	96.0	20.4	147
2013	9.3	12.0	3.9	75	88.8	84.0	21.5	75



### Average Split Sentence Lengths in Months by Felony Class

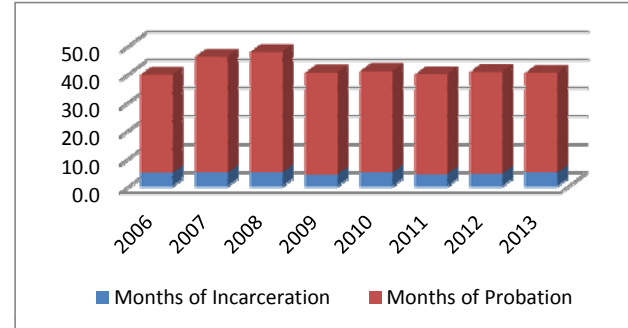
**Average Sentence Length - Class D - All Offenders**

	Months of Incarceration				Months of Probation			
	Mean	Median	Std Dev	N	Mean	Median	Std Dev	N
2006	4.8	3.3	3.8	1,021	36.0	35.3	18.4	1,021
2007	4.8	3.5	3.8	1,272	42.4	36.0	28.5	1,272
2008	4.9	3.5	4.1	1,497	43.6	36.0	32.3	1,497
2009	4.3	3.0	3.6	1,533	37.4	36.0	18.4	1,533
2010	4.9	3.9	3.8	1,749	37.8	36.0	18.3	1,749
2011	4.5	3.0	3.6	2,032	37.9	36.0	17.6	2,032
2012	4.6	3.3	3.7	2,138	38.8	36.0	17.5	2,138
2013	4.9	3.9	3.8	849	38.0	36.0	20.1	849



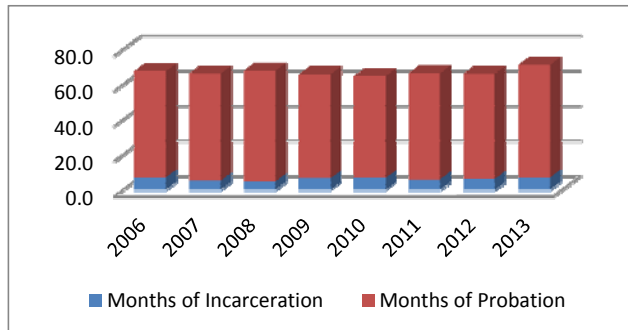
**Average Sentence Length - Class D - Standard Offenders**

	Months of Incarceration				Months of Probation			
	Mean	Median	Std Dev	N	Mean	Median	Std Dev	N
2006	4.7	3.3	3.7	981	34.9	34.0	17.1	981
2007	4.7	3.4	3.7	1,208	41.3	36.0	28.3	1,208
2008	4.9	3.4	4.0	1,438	42.8	36.0	32.3	1,438
2009	4.2	3.0	3.5	1,469	36.1	36.0	17.0	1,469
2010	4.8	3.9	3.7	1,660	36.0	36.0	15.5	1,660
2011	4.3	3.0	3.5	1,870	35.4	36.0	14.4	1,870
2012	4.4	3.0	3.5	1,948	36.2	36.0	13.9	1,948
2013	4.7	3.9	3.7	789	35.5	36.0	17.2	789



**Average Sentence Length - Class D - Multiple Offenders**

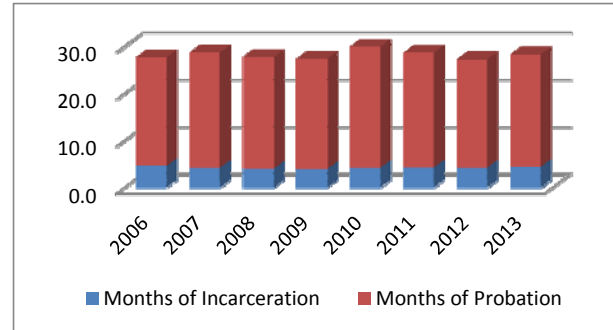
	Months of Incarceration				Months of Probation			
	Mean	Median	Std Dev	N	Mean	Median	Std Dev	N
2006	7.2	6.5	4.5	36	60.3	48.0	19.6	36
2007	5.4	3.9	4.7	59	60.9	60.0	20.4	59
2008	5.0	3.9	4.2	54	63.0	60.0	22.3	54
2009	6.6	6.0	4.0	48	59.1	53.5	19.6	48
2010	6.9	6.0	4.0	70	57.7	54.0	18.1	70
2011	6.0	5.9	3.7	143	60.4	60.0	17.3	143
2012	6.3	6.0	4.1	163	59.8	58.6	16.4	163
2013	7.1	6.0	4.1	52	63.9	64.0	18.2	52



### Average Split Sentence Lengths in Months by Felony Class

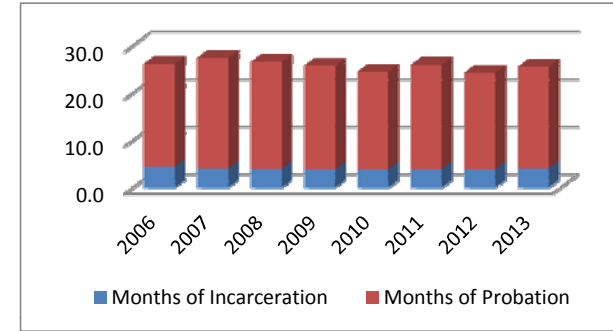
**Average Sentence Length - Class E - All Offenders**

	Months of Incarceration				Months of Probation			
	Mean	Median	Std Dev	N	Mean	Median	Std Dev	N
2006	4.6	3.9	3.4	1,940	23.1	23.9	15.4	1,940
2007	4.1	3.0	3.2	2,104	24.5	24.0	18.0	2,104
2008	4.0	3.0	3.2	2,056	23.7	23.7	16.6	2,056
2009	4.0	3.0	3.0	2,256	23.4	23.9	13.4	2,256
2010	4.1	3.0	3.2	2,007	25.8	22.5	21.7	2,007
2011	4.2	3.0	3.1	2,268	24.4	24.0	14.2	2,268
2012	4.1	3.0	3.1	2,115	23.1	23.0	13.6	2,115
2013	4.3	3.1	3.2	1,000	24.0	23.5	14.2	1,000



**Average Sentence Length - Class E - Standard Offenders**

	Months of Incarceration				Months of Probation			
	Mean	Median	Std Dev	N	Mean	Median	Std Dev	N
2006	4.4	3.3	3.3	1,777	21.7	22.0	13.2	1,777
2007	4.0	3.0	3.1	1,917	23.4	23.1	17.8	1,917
2008	4.0	3.0	3.2	1,905	22.5	22.6	16.0	1,905
2009	3.9	3.0	3.0	2,052	21.8	23.0	11.7	2,052
2010	3.9	3.0	3.1	1,744	20.6	21.0	11.7	1,744
2011	3.9	3.0	3.0	1,949	22.0	22.6	12.6	1,949
2012	3.9	3.0	2.9	1,828	20.4	21.0	10.8	1,828
2013	4.0	3.0	3.0	867	21.5	21.0	12.4	867



**Average Sentence Length - Class E - Multiple Offenders**

	Months of Incarceration				Months of Probation			
	Mean	Median	Std Dev	N	Mean	Median	Std Dev	N
2006	6.5	5.0	4.0	152	36.6	36.0	25.3	152
2007	4.8	4.9	3.2	158	33.5	33.0	12.6	158
2008	4.9	4.0	3.5	121	35.5	36.0	14.7	121
2009	4.6	3.9	3.2	162	34.8	36.0	14.5	162
2010	5.5	6.0	3.2	216	61.3	48.0	39.3	216
2011	5.6	5.0	3.5	266	35.2	36.0	10.9	266
2012	5.4	4.8	3.8	224	36.5	36.0	15.2	224
2013	5.8	5.0	3.5	101	36.0	36.0	11.9	101

