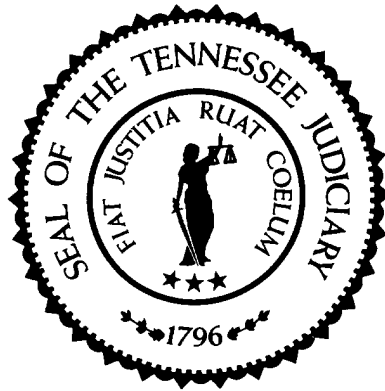


# Sentencing Practices in Tennessee



Administrative Office of the Courts

Information for Cases Sentenced Between  
July 1, 2008 and June 30, 2016

TDOC Data Extracted: October 2016  
Released: November 2016

## Sentencing Practices in Tennessee Contents

Methodology	1
Sentence Type Information	
Class A	3
Class B	3
Class C	4
Class D	4
Class E	4
Average Incarceration Lengths in Months	
Class A	5
Rape of Child	6
Second Degree Murder	6
Especially Aggravated Kidnapping	7
Class B	9
Schedule II Cocaine	9
Aggravated Robbery	10
Aggravated Sexual Battery	11
Class C	11
Aggravated Burglary	12
Aggravated Assault	13
Schedule II Cocaine < ½ Gram	15
Schedule II Drugs: Max \$100,000 Fine	16
Class D	17
Theft: \$1,000 to \$10,000	18
Burglary Other Than Habitation	19
Identity Theft	20
Obtain Drugs by Fraud	21
Class E	22
Forgery: Up to \$1,000	23
Burglary: Auto	24
Theft: \$500 to \$1,000	25
Schedule VI Drugs: Not < ½ Ounce	26
Habitual Traffic Offender	27
Failure to Appear (Felony)	28
Average Probation Lengths in Months	
Class B	29
Class C	29
Class D	30
Class E	31
Average Split Sentence Lengths in Months	
Class B	32
Class C	33
Class D	34
Class E	35

## Methodology

The data used in evaluating sentencing practices comes from the Tennessee Department of Correction (TDOC). TDOC data was selected because individual offense data is captured by the department. Each offense sentence is recorded individually, even in cases of multiple offense convictions, eliminating the potential confusion in determining sentence lengths created by these multiple offense convictions. To establish a baseline for comparison purposes, data from multiple years was queried. The initial focus of this analysis consisted of cases where the defendants received incarceration only, either in a TDOC facility or a local jail, however alternative sentence information was gathered as well. This data is not a sample, but is the entire population of sentences captured by the TDOC during the time frame analyzed.

Sentence lengths will be reported for standard offenders, multiple offenders and for all offender types as a group. Standard and multiple offender defendant types were chosen because they comprise over 90% of all sentences in Tennessee.

Specific offenses were included in analysis first by choosing the top three most frequently occurring offenses in each felony class, then by a combination of occurrence frequency, overall impact on sentence length and by the increasing in frequency of the occurrence of the offense (i.e. the offense is happening in increasing amounts, but was not historically happening in large numbers). The following offenses make nearly 70% of convicted offenses and are included in the statistic table report.

- Class A
  - Rape of a Child
  - Second Degree Murder
  - Especially Aggravated Kidnapping
- Class B
  - Schedule II Drugs: Cocaine
  - Aggravated Robbery
  - Aggravated Sexual Battery
- Class C
  - Aggravated Burglary
  - Aggravated Assault
  - Schedule II Drugs: Cocaine < 1/2 Gram
  - Schedule II Drugs: Up to \$100,000 Fine
- Class D
  - Theft: \$1,000 to \$10,000
  - Burglary: Other than Habitation or Auto
  - Identity Theft
  - Obtain Drugs by Fraud
- Class E
  - Forgery: Up to \$1,000
  - Burglary: Auto
  - Theft: \$500 to \$1,000
  - Schedule VI Drugs: Not Less than ½ Ounce
  - Habitual Traffic Offender
  - Failure to Appear (Felony)

Data for each felony class and defendant type (standard, multiple and all) are presented as well. The tables for the offenses listed and for the felony classes display the mean and median sentence lengths in months, the standard deviation and the number of convictions for each year reported.

**Note**

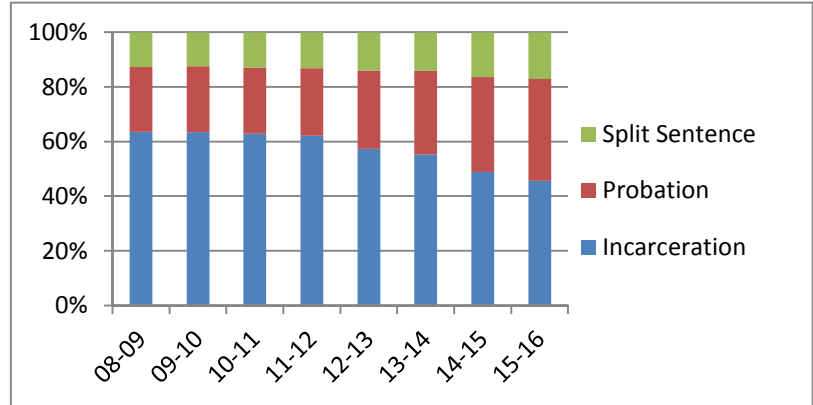
The numbers presented here and in previous reports may vary for the same years. Discrepancies are due in part to late reporting to the Tennessee Department of Corrections and parole violations over time. Also, due to late reporting to TDOC, the total population in recent years may not be included in the analysis at the time of publication.

# Sentence Type Information

Note: Column N indicates the number of felony convictions. Individual offenders can have multiple convictions. Incarceration includes life without parole and death sentences. Probation includes sentences to community corrections.

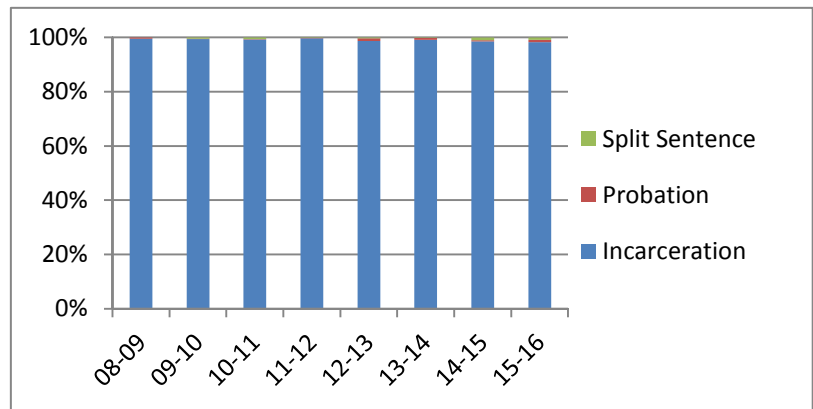
**Percent of Sentence Type - All Felony Classes - All Offenders**

Fiscal Year	Incarceration	Probation	Split Sentence	N
	Percent	Percent	Percent	
08-09	63.5%	23.8%	12.7%	40,849
09-10	63.4%	24.1%	12.4%	41,921
10-11	62.9%	24.0%	13.0%	43,617
11-12	62.1%	24.8%	13.1%	43,217
12-13	57.3%	28.7%	14.0%	40,422
13-14	55.2%	30.6%	14.2%	37,416
14-15	48.8%	34.7%	16.5%	33,986
15-16	45.7%	37.2%	17.1%	33,345



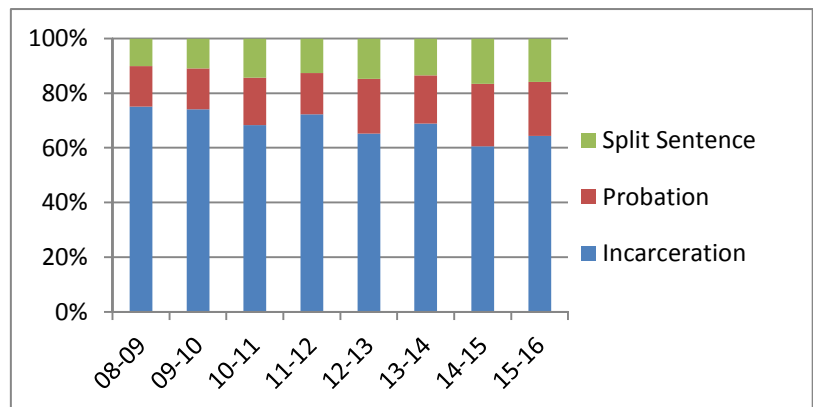
**Percent of Sentence Type - Felony Class A - All Offenders**

Fiscal Year	Incarceration	Probation	Split Sentence	N
	Percent	Percent	Percent	
08-09	99.6%	0.4%	0.0%	710
09-10	99.4%	0.1%	0.4%	670
10-11	99.2%	0.2%	0.6%	528
11-12	99.7%	0.2%	0.2%	646
12-13	98.6%	1.0%	0.3%	584
13-14	99.2%	0.7%	0.2%	591
14-15	98.5%	0.4%	1.0%	481
15-16	98.0%	0.9%	0.9%	557



**Percent of Sentence Type - Felony Class B - All Offenders**

Fiscal Year	Incarceration	Probation	Split Sentence	N
	Percent	Percent	Percent	
08-09	75.1%	14.8%	10.1%	3,802
09-10	74.0%	15.0%	11.0%	3,747
10-11	68.4%	17.3%	14.4%	3,847
11-12	72.3%	15.1%	12.6%	3,868
12-13	65.2%	20.0%	14.8%	3,447
13-14	68.9%	17.6%	13.5%	3,078
14-15	60.6%	22.9%	16.6%	2,997
15-16	64.3%	19.8%	15.9%	3,136

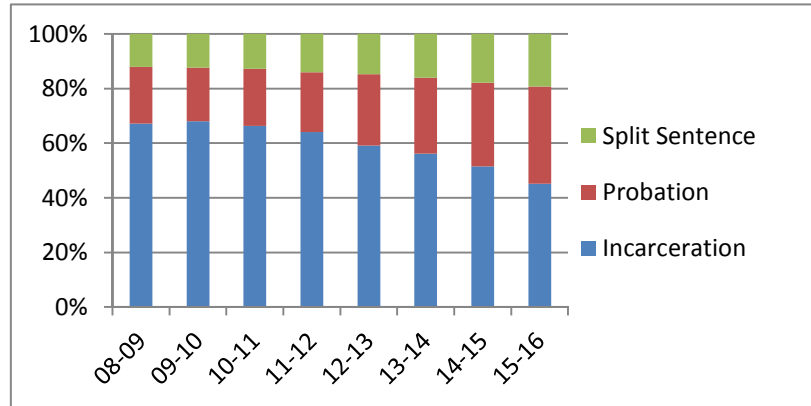


## Sentence Type Information

Note: Column N indicates the number of felony convictions. Individual offenders can have multiple convictions. Incarceration includes life without parole and death sentences. Probation includes sentences to community corrections.

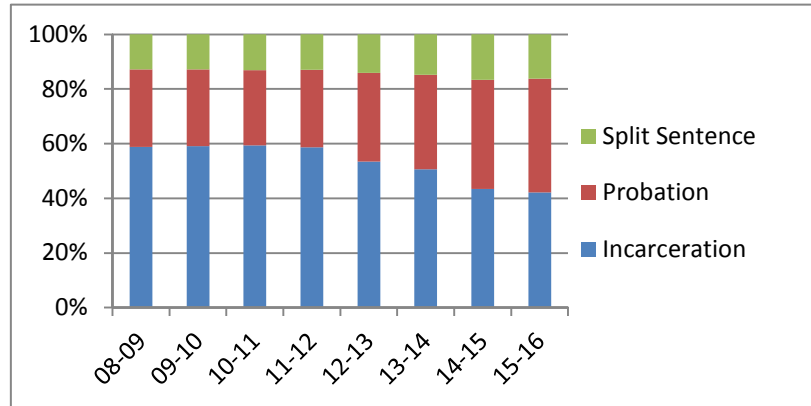
**Percent of Sentence Type - Felony Class C - All Offenders**

Fiscal Year	Incarceration	Probation	Split Sentence	N
	Percent	Percent	Percent	
08-09	67.2%	20.7%	12.1%	10,054
09-10	68.0%	19.6%	12.4%	10,745
10-11	66.4%	20.8%	12.8%	11,632
11-12	64.1%	21.9%	14.0%	11,597
12-13	59.1%	26.1%	14.7%	10,514
13-14	56.2%	27.8%	16.0%	9,942
14-15	51.5%	30.5%	17.9%	8,980
15-16	45.2%	35.6%	19.3%	9,188



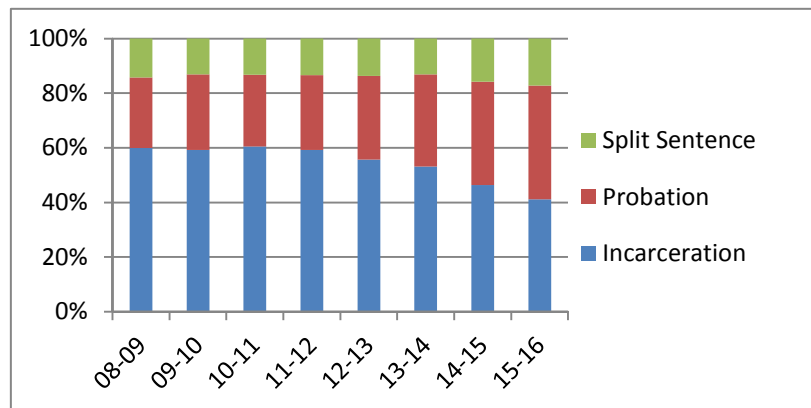
**Percent of Sentence Type - Felony Class D - All Offenders**

Fiscal Year	Incarceration	Probation	Split Sentence	N
	Percent	Percent	Percent	
08-09	58.8%	28.4%	12.8%	10,843
09-10	59.2%	28.0%	12.8%	12,108
10-11	59.4%	27.4%	13.1%	12,710
11-12	58.6%	28.5%	12.9%	13,160
12-13	53.5%	32.4%	14.1%	12,274
13-14	50.6%	34.6%	14.8%	11,252
14-15	43.4%	40.0%	16.6%	10,309
15-16	42.2%	41.7%	16.1%	9,459



**Percent of Sentence Type - Felony Class E - All Offenders**

Fiscal Year	Incarceration	Probation	Split Sentence	N
	Percent	Percent	Percent	
08-09	59.9%	25.8%	14.2%	15,440
09-10	59.3%	27.6%	13.1%	14,651
10-11	60.5%	26.3%	13.3%	14,900
11-12	59.2%	27.4%	13.3%	13,946
12-13	55.7%	30.7%	13.6%	13,603
13-14	53.1%	33.8%	13.1%	12,553
14-15	46.4%	37.8%	15.8%	11,219
15-16	41.2%	41.6%	17.2%	11,005

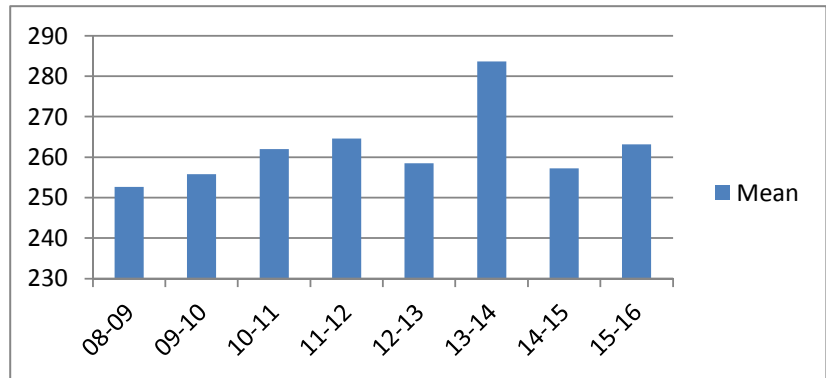


## Average Incarceration Lengths in Months by Felony Class and Offense

Note: Column N indicates the number of felony convictions. Individual offenders can have multiple convictions. Incarceration includes life without parole and death sentences. Probation includes sentences to community corrections.

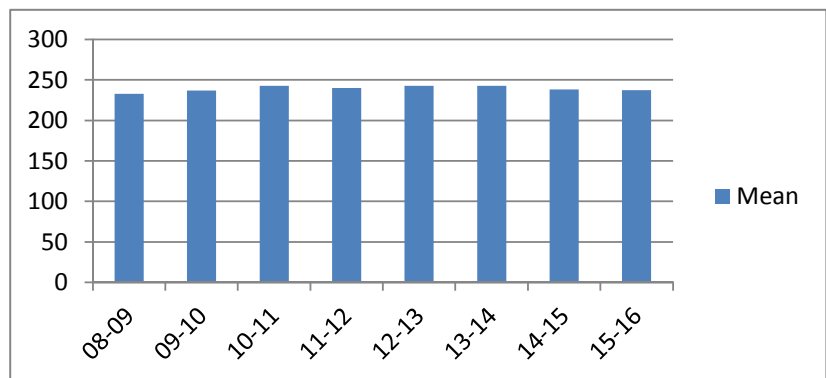
**Average Incarceration Length - Class A - All Offenders**

Fiscal Year	Mean	Median	Standard Deviation	N
08-09	252.68	240.00	88.09	702
09-10	255.83	240.00	88.02	663
10-11	261.97	240.00	91.96	522
11-12	264.60	240.00	95.44	642
12-13	258.45	240.00	83.07	573
13-14	283.58	264.00	118.80	586
14-15	257.21	240.00	88.23	473
15-16	263.19	240.00	94.39	545



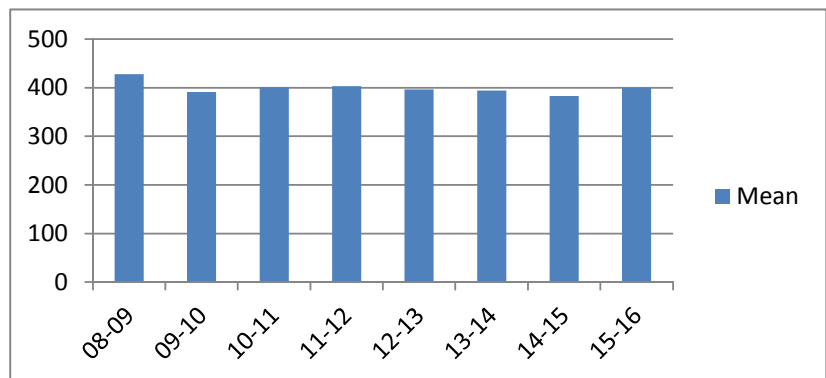
**Average Incarceration Length - Class A - Standard Offenders**

Fiscal Year	Mean	Median	Standard Deviation	N
08-09	232.93	240.00	46.91	595
09-10	237.01	240.00	50.80	540
10-11	242.71	240.00	49.50	429
11-12	240.00	240.00	48.23	496
12-13	242.72	240.00	50.02	479
13-14	242.74	240.00	50.23	420
14-15	237.97	240.00	53.48	373
15-16	237.38	240.00	52.14	428



**Average Incarceration Length - Class A - Multiple Offenders**

Fiscal Year	Mean	Median	Standard Deviation	N
08-09	427.64	480.00	60.37	66
09-10	391.07	384.00	67.64	73
10-11	401.19	396.00	62.50	52
11-12	403.36	384.00	56.59	75
12-13	396.42	420.00	86.35	57
13-14	393.87	384.00	75.71	107
14-15	383.08	384.00	104.76	65
15-16	399.82	384.00	68.86	77



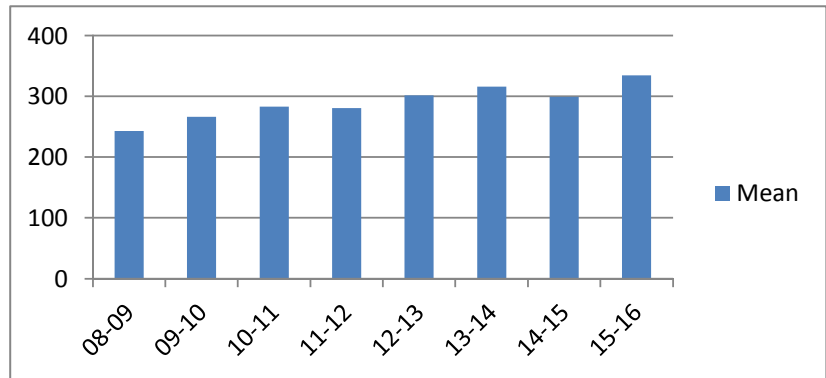
## Average Incarceration Lengths in Months by Felony Class and Offense

Note: Column N indicates the number of felony convictions. Individual offenders can have multiple convictions. Incarceration includes life without parole and death sentences. Probation includes sentences to community corrections.

### Average Incarceration Length - Rape of a Child - All Offenders

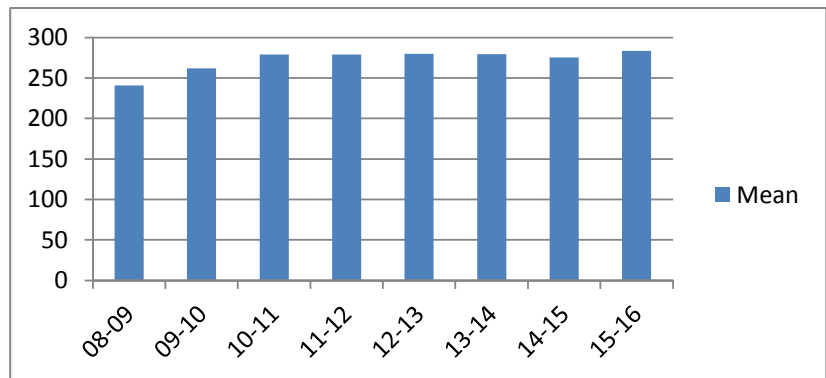
Fiscal Year	Mean	Median	Standard Deviation	N
08-09	243.07	240.00	38.40	201
09-10	266.60	300.00	49.27	129
10-11	283.13	300.00	47.07	90
11-12	280.99	300.00	41.09	101
12-13	301.90	300.00	65.82	82
13-14	315.86	300.00	69.73	112
14-15	299.68	300.00	63.47	75
15-16	334.97	300.00	94.28	70

The table for multiple offenders was not included due to low occurrence frequencies.



### Average Incarceration Length - Rape of a Child - Standard Offenders

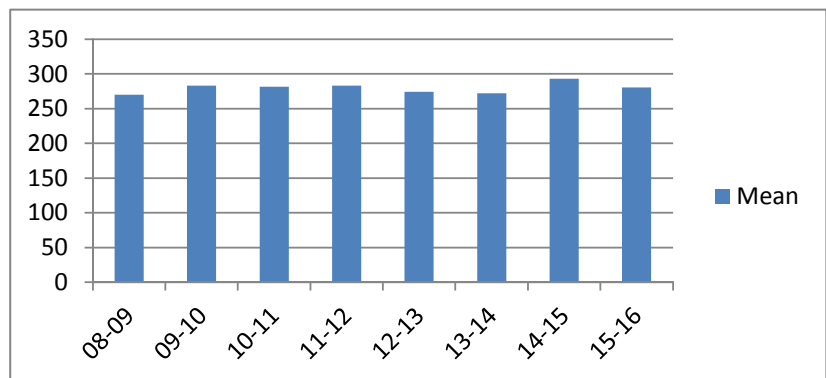
Fiscal Year	Mean	Median	Standard Deviation	N
08-09	240.70	240.00	32.67	198
09-10	262.05	300.00	45.79	123
10-11	279.07	300.00	30.66	84
11-12	279.00	300.00	36.08	100
12-13	279.71	300.00	42.25	68
13-14	279.52	300.00	41.75	75
14-15	275.58	300.00	42.24	57
15-16	283.43	300.00	33.31	42



### Average Incarceration Length - Second Degree Murder - All Offenders

Fiscal Year	Mean	Median	Standard Deviation	N
08-09	270.00	240.00	95.24	115
09-10	283.23	252.00	96.30	127
10-11	281.39	255.00	96.38	108
11-12	283.02	240.00	102.48	118
12-13	274.19	264.00	90.69	83
13-14	271.96	270.00	74.08	92
14-15	293.08	300.00	104.46	78
15-16	280.34	246.00	96.76	110

The table for multiple offenders was not included due to low occurrence frequencies.



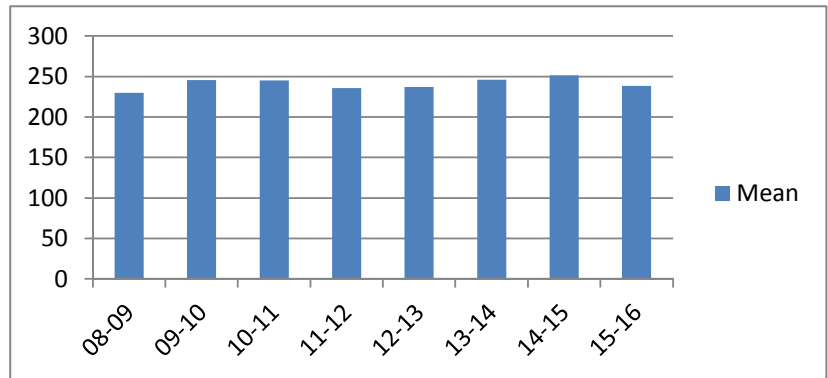


## Average Incarceration Lengths in Months by Felony Class and Offense

Note: Column N indicates the number of felony convictions. Individual offenders can have multiple convictions. Incarceration includes life without parole and death sentences. Probation includes sentences to community corrections.

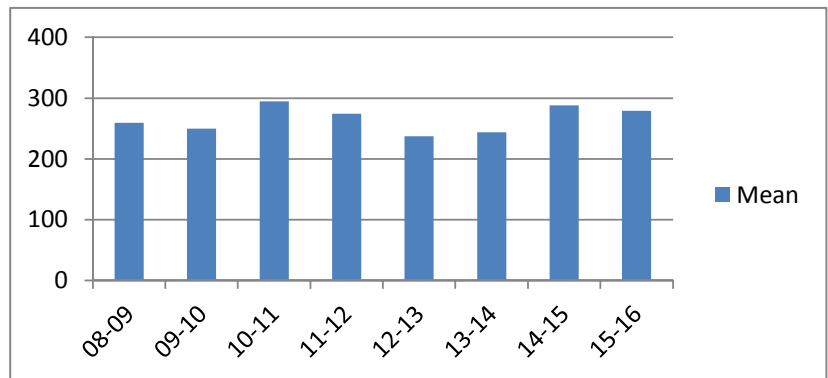
### Average Incarceration Length - Second Degree Murder - Standard Offenders

Fiscal Year	Mean	Median	Standard Deviation	N
08-09	230.02	240.00	41.38	89
09-10	245.66	240.00	44.98	89
10-11	244.88	240.00	43.00	75
11-12	235.67	240.00	44.38	79
12-13	237.19	240.00	49.31	62
13-14	245.83	240.00	47.40	72
14-15	251.25	240.00	44.72	48
15-16	238.52	240.00	44.74	79



### Average Incarceration Length - Especially Aggravated Kidnapping - All Offenders

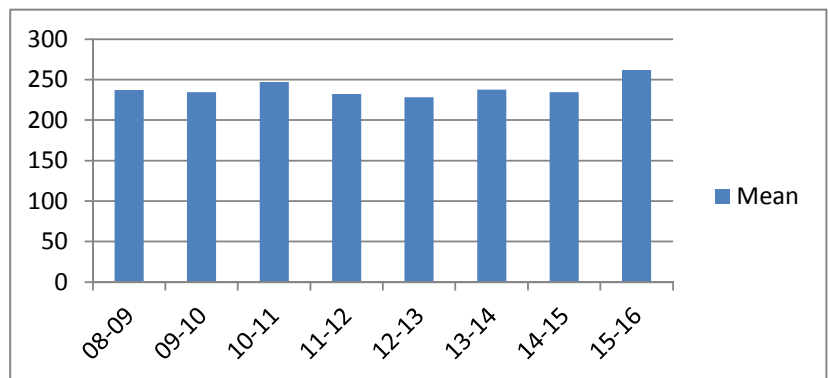
Fiscal Year	Mean	Median	Standard Deviation	N
08-09	259.52	240.00	104.37	79
09-10	249.54	240.00	100.85	56
10-11	294.37	264.00	121.94	49
11-12	274.16	240.00	117.01	88
12-13	237.26	240.00	67.66	68
13-14	243.86	240.00	88.41	42
14-15	288.16	276.00	113.93	38
15-16	278.78	300.00	100.93	67



The table for multiple offenders was not included due to low occurrence frequencies.

### Average Incarceration Length - Especially Aggravated Kidnapping - Standard Offenders

Fiscal Year	Mean	Median	Standard Deviation	N
08-09	237.36	240.00	52.88	59
09-10	234.55	240.00	50.61	44
10-11	246.90	246.00	47.76	40
11-12	232.21	240.00	45.17	67
12-13	228.20	240.00	46.76	61
13-14	237.79	240.00	44.19	38
14-15	234.43	240.00	54.40	28
15-16	261.80	300.00	56.78	60

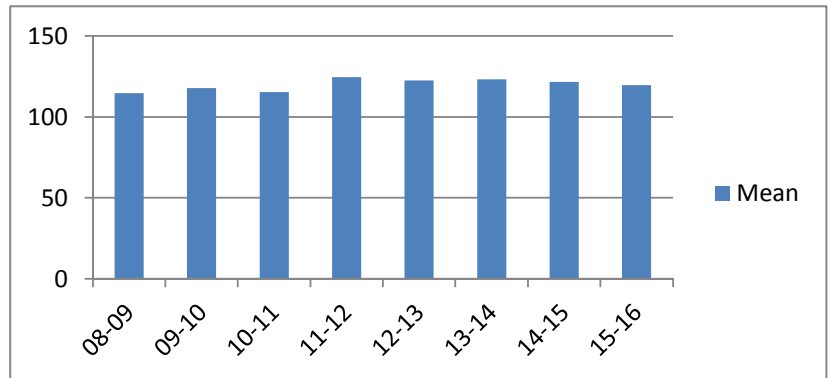


## Average Incarceration Lengths in Months by Felony Class and Offense

Note: Column N indicates the number of felony convictions. Individual offenders can have multiple convictions. Incarceration includes life without parole and death sentences. Probation includes sentences to community corrections.

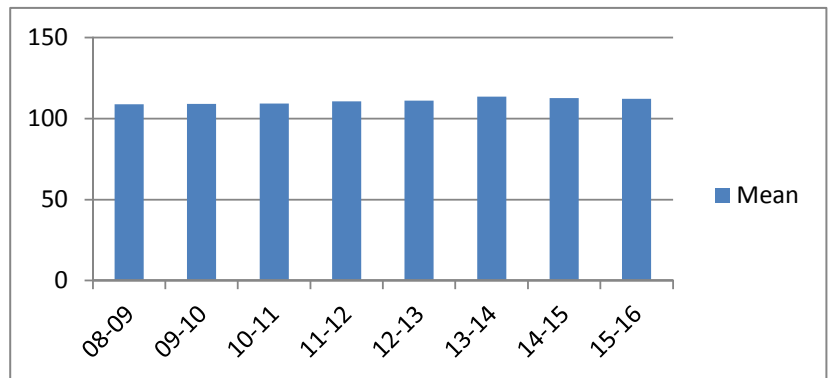
**Average Incarceration Length - Felony Class B - All Offenders**

Fiscal Year	Mean	Median	Standard Deviation	N
08-09	114.75	96.00	33.73	2,852
09-10	117.84	96.00	39.19	2,766
10-11	115.40	96.00	34.72	2,628
11-12	124.50	108.00	44.95	2,794
12-13	122.55	108.00	43.87	2,246
13-14	123.09	120.00	40.80	2,120
14-15	121.65	108.00	37.52	1,815
15-16	119.54	108.00	37.29	2,016



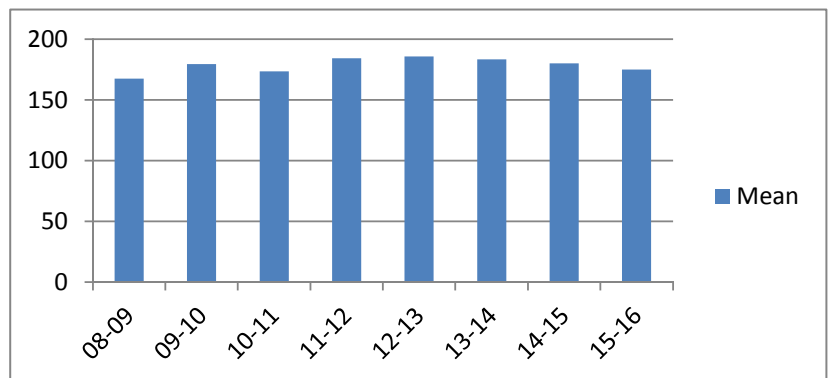
**Average Incarceration Length - Felony Class B - Standard Offenders**

Fiscal Year	Mean	Median	Standard Deviation	N
08-09	108.84	96.00	17.78	2,409
09-10	109.17	96.00	19.62	2,238
10-11	109.24	96.00	18.23	2,149
11-12	110.68	96.00	20.08	2,179
12-13	111.12	96.00	18.85	1,877
13-14	113.61	108.00	21.01	1,790
14-15	112.64	108.00	20.47	1,521
15-16	112.30	108.00	19.12	1,658



**Average Incarceration Length - Felony Class B - Multiple Offenders**

Fiscal Year	Mean	Median	Standard Deviation	N
08-09	167.37	156.00	35.33	227
09-10	179.48	180.00	37.81	288
10-11	173.39	168.00	36.83	216
11-12	184.17	180.00	35.46	407
12-13	185.58	180.00	43.25	227
13-14	183.15	180.00	40.47	200
14-15	180.11	180.00	42.81	217
15-16	174.99	180.00	33.12	213

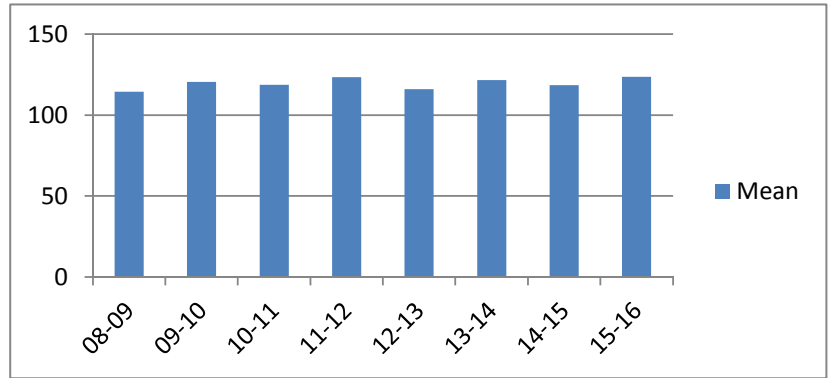


## Average Incarceration Lengths in Months by Felony Class and Offense

Note: Column N indicates the number of felony convictions. Individual offenders can have multiple convictions. Incarceration includes life without parole and death sentences. Probation includes sentences to community corrections.

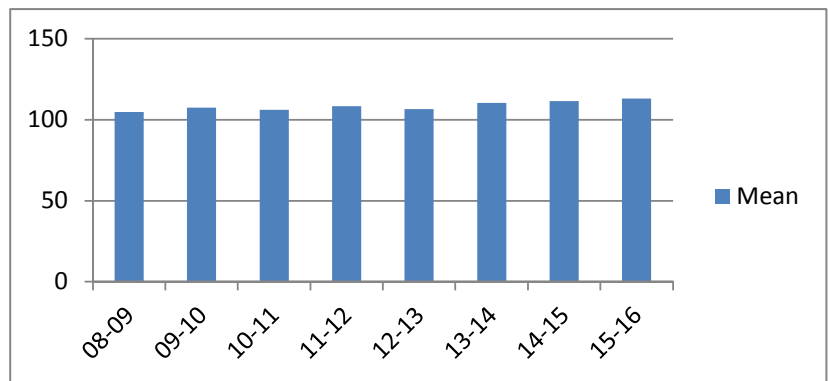
### Average Incarceration Length - Schedule II Cocaine - All Offenders

Fiscal Year	Mean	Median	Standard Deviation	N
08-09	114.30	96.00	32.86	791
09-10	120.41	96.00	45.44	629
10-11	118.64	96.00	37.56	502
11-12	123.31	108.00	45.32	513
12-13	115.87	108.00	31.39	421
13-14	121.53	108.00	38.11	344
14-15	118.42	108.00	34.17	253
15-16	123.66	120.00	37.24	169



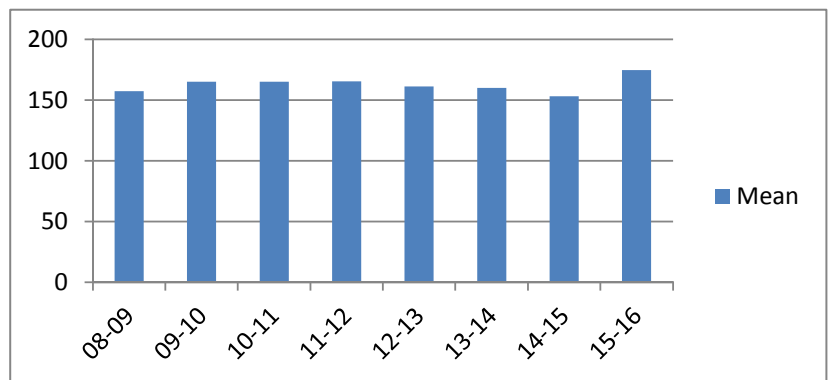
### Average Incarceration Length - Schedule II Cocaine - Standard Offenders

Fiscal Year	Mean	Median	Standard Deviation	N
08-09	104.70	96.00	14.59	670
09-10	107.48	96.00	21.08	518
10-11	106.18	96.00	16.76	412
11-12	108.50	96.00	21.71	413
12-13	106.62	96.00	18.36	344
13-14	110.46	96.00	20.09	280
14-15	111.46	96.00	20.94	215
15-16	113.01	120.00	19.86	139



### Average Incarceration Length - Schedule II Cocaine - Multiple Offenders

Fiscal Year	Mean	Median	Standard Deviation	N
08-09	157.14	144.00	27.77	105
09-10	165.10	144.00	41.92	91
10-11	164.88	156.00	33.47	73
11-12	165.25	144.00	35.08	83
12-13	161.21	144.00	38.86	68
13-14	160.00	144.00	31.54	51
14-15	153.00	147.00	44.25	30
15-16	174.55	180.00	30.70	22

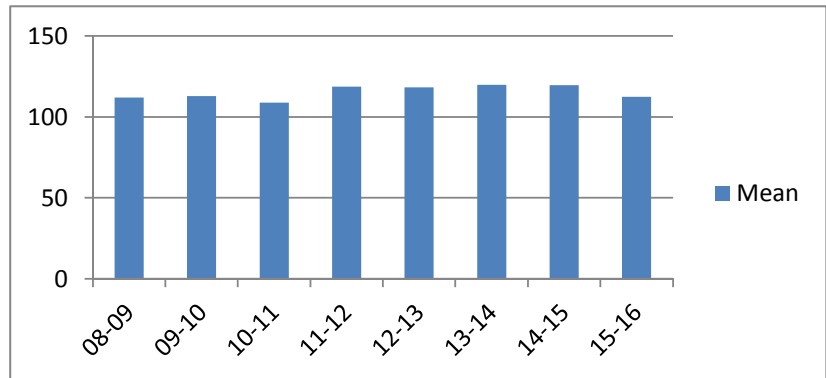


## Average Incarceration Lengths in Months by Felony Class and Offense

Note: Column N indicates the number of felony convictions. Individual offenders can have multiple convictions. Incarceration includes life without parole and death sentences. Probation includes sentences to community corrections.

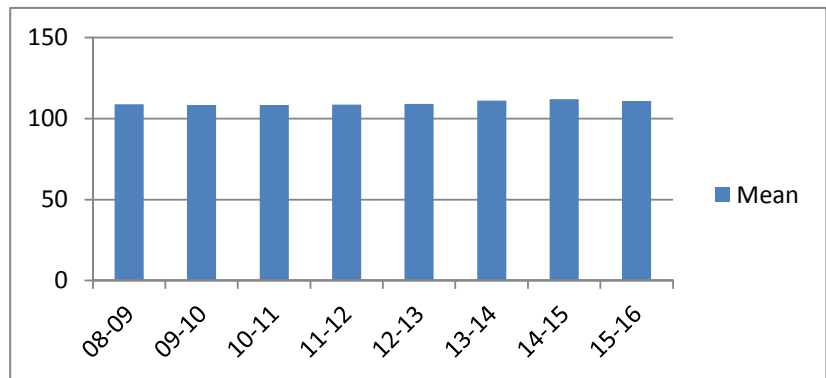
**Average Incarceration Length - Aggravated Robbery - All Offenders**

Fiscal Year	Mean	Median	Standard Deviation	N
08-09	111.96	96.00	34.19	920
09-10	112.87	96.00	36.56	906
10-11	108.83	96.00	30.01	748
11-12	118.62	96.00	48.34	635
12-13	118.22	96.00	45.38	508
13-14	119.85	96.00	42.86	499
14-15	119.61	108.00	40.46	412
15-16	112.41	96.00	30.82	509



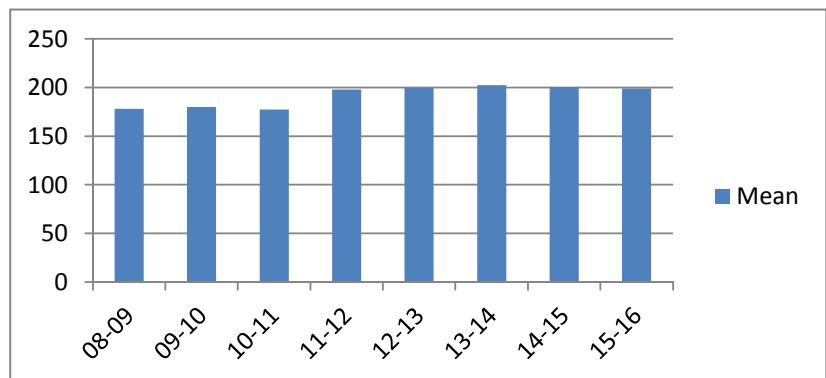
**Average Incarceration Length - Aggravated Robbery - Standard Offenders**

Fiscal Year	Mean	Median	Standard Deviation	N
08-09	108.84	96.00	17.30	703
09-10	108.39	96.00	20.67	653
10-11	108.29	96.00	16.98	557
11-12	108.64	96.00	18.01	458
12-13	109.08	96.00	17.60	401
13-14	111.08	96.00	18.07	407
14-15	112.08	108.00	19.69	334
15-16	110.81	96.00	21.25	433



**Average Incarceration Length - Aggravated Robbery - Multiple Offenders**

Fiscal Year	Mean	Median	Standard Deviation	N
08-09	178.22	174.00	39.17	54
09-10	180.08	180.00	38.80	74
10-11	177.25	174.00	36.26	24
11-12	198.11	180.00	34.55	55
12-13	200.00	192.00	37.55	33
13-14	202.54	216.00	34.97	37
14-15	200.73	180.00	29.70	33
15-16	199.00	201.00	22.57	18



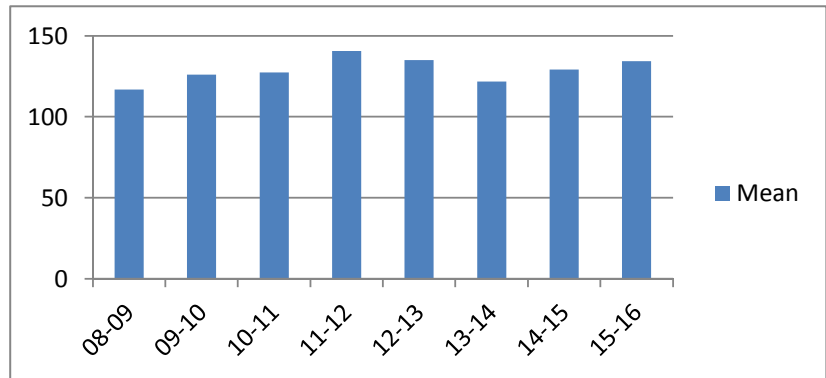
## Average Incarceration Lengths in Months by Felony Class and Offense

Note: Column N indicates the number of felony convictions. Individual offenders can have multiple convictions. Incarceration includes life without parole and death sentences. Probation includes sentences to community corrections.

### Average Incarceration Length - Aggravated Sexual Battery - All Offenders

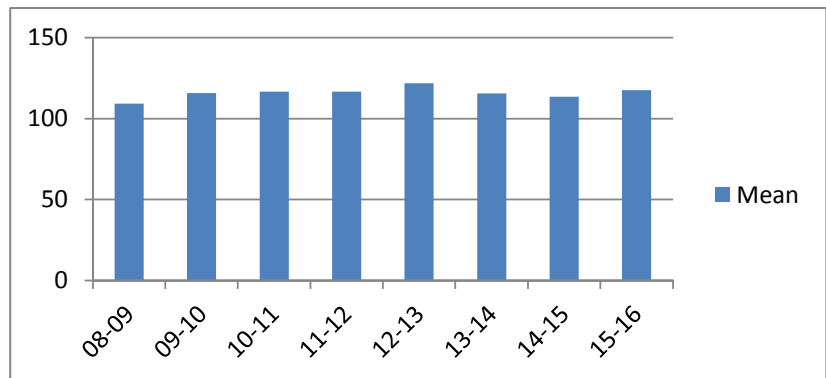
Fiscal Year	Mean	Median	Standard Deviation	N
08-09	116.87	96.00	30.18	191
09-10	126.13	120.00	31.38	182
10-11	127.46	120.00	34.27	201
11-12	140.71	120.00	39.63	383
12-13	135.05	120.00	38.26	215
13-14	121.74	120.00	34.16	188
14-15	129.24	120.00	41.85	168
15-16	134.30	120.00	40.25	138

The table for multiple offenders was not included due to low occurrence frequencies.



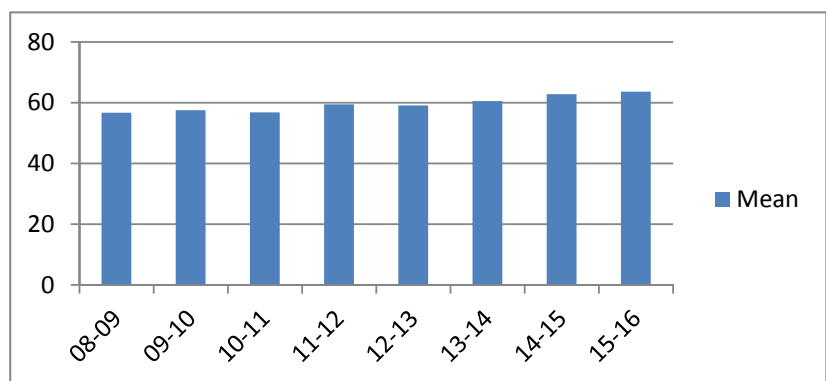
### Average Incarceration Length - Aggravated Sexual Battery - Standard Offenders

Fiscal Year	Mean	Median	Standard Deviation	N
08-09	109.20	96.00	17.93	170
09-10	115.84	120.00	18.38	153
10-11	116.60	120.00	18.18	173
11-12	116.56	120.00	15.94	251
12-13	121.91	120.00	19.20	179
13-14	115.43	120.00	18.25	168
14-15	113.61	108.00	16.99	139
15-16	117.58	120.00	18.93	104



### Average Incarceration Length - Class C - All Offenders

Fiscal Year	Mean	Median	Standard Deviation	N
08-09	56.72	48.00	24.41	6,752
09-10	57.54	48.00	27.11	7,304
10-11	56.88	48.00	25.17	7,719
11-12	59.53	48.00	28.63	7,432
12-13	59.16	48.00	28.35	6,218
13-14	60.59	54.00	28.43	5,586
14-15	62.80	54.00	31.92	4,628
15-16	63.66	60.00	30.38	4,149

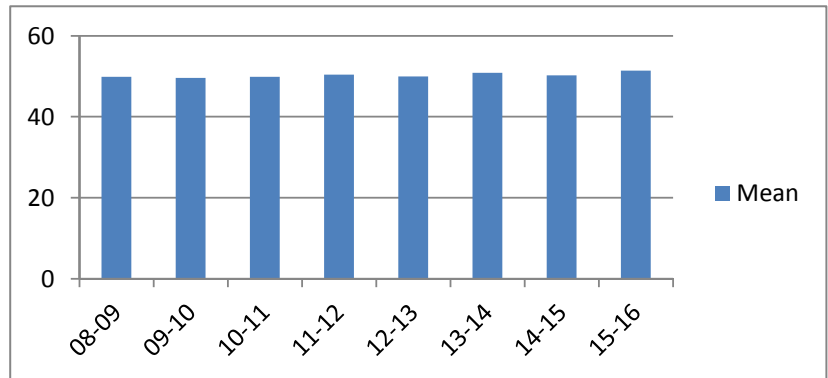


## Average Incarceration Lengths in Months by Felony Class and Offense

Note: Column N indicates the number of felony convictions. Individual offenders can have multiple convictions. Incarceration includes life without parole and death sentences. Probation includes sentences to community corrections.

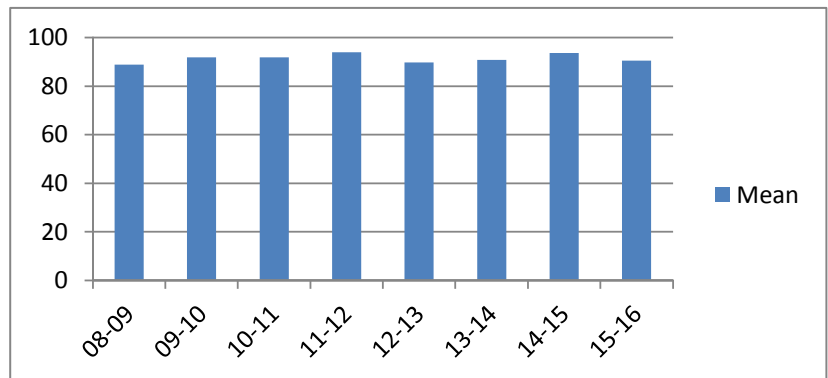
**Average Incarceration Length - Class C - Standard Offenders**

Fiscal Year	Mean	Median	Standard Deviation	N
08-09	49.90	48.00	15.44	5,652
09-10	49.59	48.00	16.08	6,136
10-11	49.85	48.00	15.65	6,548
11-12	50.37	48.00	16.78	6,115
12-13	49.97	48.00	15.70	5,066
13-14	50.89	48.00	16.08	4,490
14-15	50.19	48.00	17.00	3,536
15-16	51.39	48.00	17.79	3,093



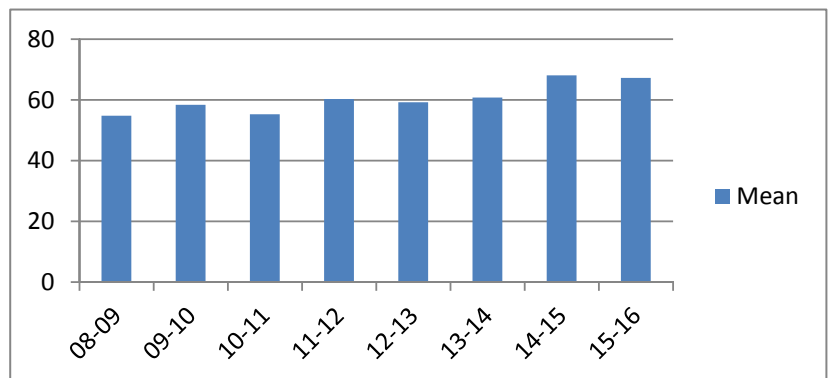
**Average Incarceration Length - Class C - Multiple Offenders**

Fiscal Year	Mean	Median	Standard Deviation	N
08-09	88.88	84.00	20.60	873
09-10	91.87	96.00	21.50	893
10-11	91.76	96.00	22.19	916
11-12	93.92	96.00	21.86	993
12-13	89.78	90.00	21.81	861
13-14	90.73	90.00	20.27	839
14-15	93.70	96.00	22.69	830
15-16	90.47	84.00	21.17	790



**Average Incarceration Length - Aggravated Burglary - All Offenders**

Fiscal Year	Mean	Median	Standard Deviation	N
08-09	54.84	48.00	24.11	1,618
09-10	58.48	48.00	28.45	2,077
10-11	55.27	48.00	24.52	2,239
11-12	60.31	48.00	30.54	2,304
12-13	59.26	48.00	30.72	1,907
13-14	60.76	48.00	30.00	1,558
14-15	68.11	60.00	35.96	1,325
15-16	67.31	60.00	33.40	1,090

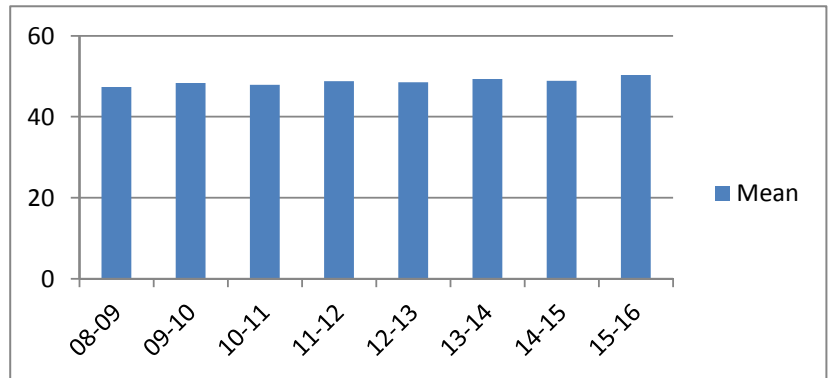


## Average Incarceration Lengths in Months by Felony Class and Offense

Note: Column N indicates the number of felony convictions. Individual offenders can have multiple convictions. Incarceration includes life without parole and death sentences. Probation includes sentences to community corrections.

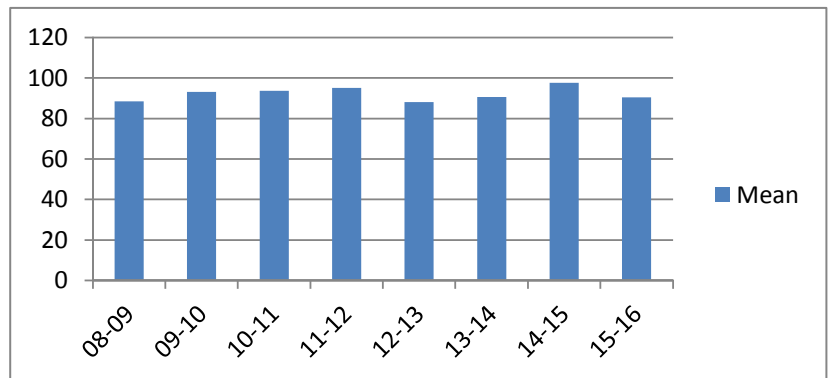
### Average Incarceration Length - Aggravated Burglary - Standard Offenders

Fiscal Year	Mean	Median	Standard Deviation	N
08-09	47.38	42.00	14.38	1,349
09-10	48.37	48.00	14.33	1,698
10-11	47.86	48.00	13.55	1,909
11-12	48.74	48.00	15.08	1,836
12-13	48.54	48.00	14.30	1,528
13-14	49.35	48.00	14.36	1,221
14-15	48.89	48.00	17.49	892
15-16	50.30	48.00	14.91	734



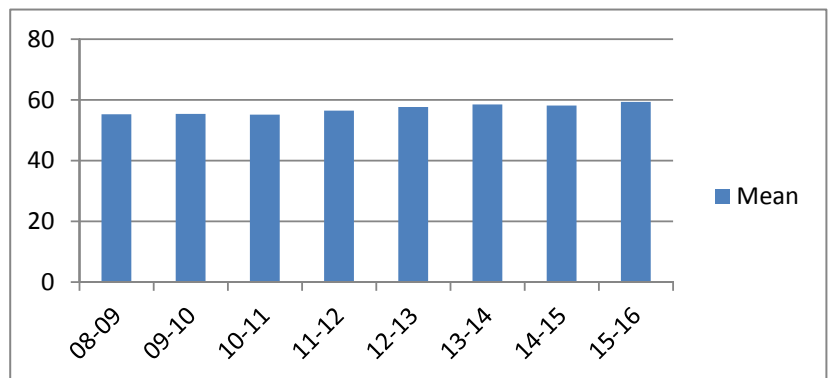
### Average Incarceration Length - Aggravated Burglary - Multiple Offenders

Fiscal Year	Mean	Median	Standard Deviation	N
08-09	88.37	84.00	19.29	213
09-10	93.19	96.00	18.59	290
10-11	93.69	96.00	20.27	244
11-12	95.18	96.00	21.57	320
12-13	88.12	84.00	20.83	261
13-14	90.55	84.00	20.33	251
14-15	97.64	96.00	22.07	336
15-16	90.44	84.00	23.26	261



### Average Incarceration Length - Aggravated Assault - All Offenders

Fiscal Year	Mean	Median	Standard Deviation	N
08-09	55.30	48.00	24.33	1,133
09-10	55.38	48.00	25.39	1,043
10-11	55.18	48.00	25.26	1,048
11-12	56.48	48.00	26.64	1,075
12-13	57.67	48.00	30.77	1,049
13-14	58.56	48.00	28.59	914
14-15	58.15	48.00	27.84	830
15-16	59.37	48.00	29.31	845

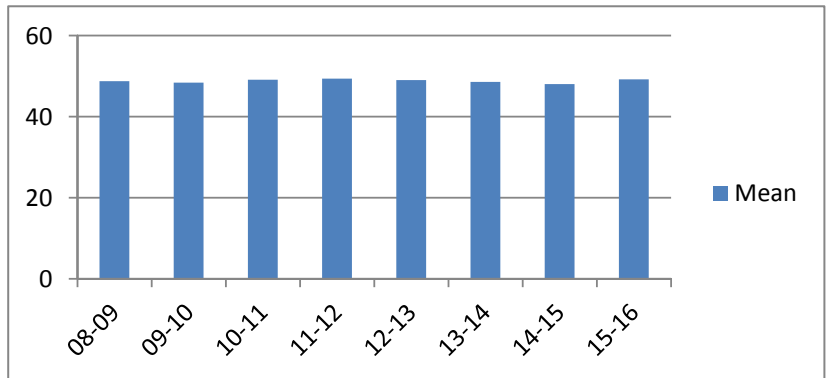


## Average Incarceration Lengths in Months by Felony Class and Offense

Note: Column N indicates the number of felony convictions. Individual offenders can have multiple convictions. Incarceration includes life without parole and death sentences. Probation includes sentences to community corrections.

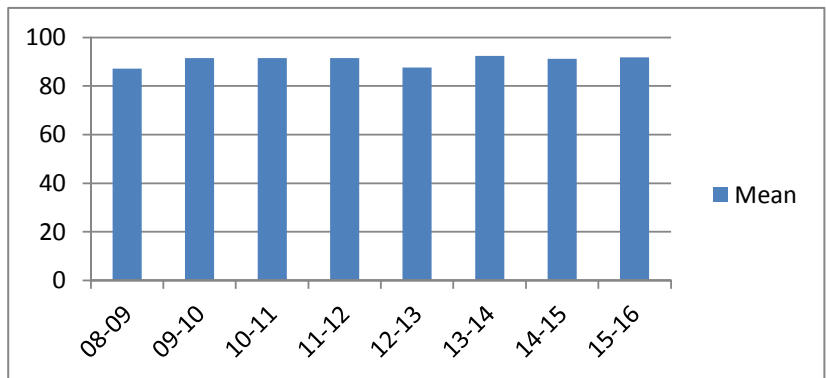
**Average Incarceration Length - Aggravated Assault - Standard Offenders**

Fiscal Year	Mean	Median	Standard Deviation	N
08-09	48.75	48.00	14.82	949
09-10	48.43	36.03	15.36	894
10-11	49.10	48.00	15.40	916
11-12	49.39	48.00	16.45	922
12-13	49.00	48.00	15.25	874
13-14	48.62	48.00	14.90	735
14-15	48.01	36.00	15.06	664
15-16	49.21	42.00	17.99	669



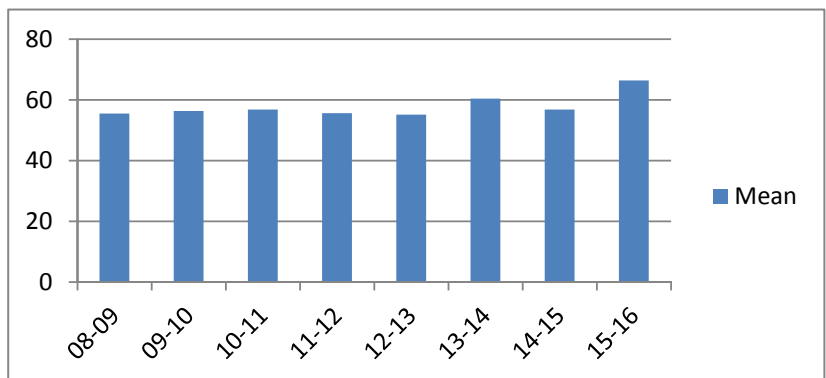
**Average Incarceration Length - Aggravated Assault - Multiple Offenders**

Fiscal Year	Mean	Median	Standard Deviation	N
08-09	87.11	84.00	21.73	142
09-10	91.45	96.00	21.31	113
10-11	91.52	96.00	20.51	92
11-12	91.47	96.00	21.77	124
12-13	87.59	96.00	21.20	141
13-14	92.43	96.00	26.32	153
14-15	91.15	96.00	20.76	130
15-16	91.76	84.00	22.21	131



**Average Incarceration Length - Schedule II Cocaine < 1/2 Gram - All Offenders**

Fiscal Year	Mean	Median	Standard Deviation	N
08-09	55.57	48.00	21.21	1,237
09-10	56.32	48.00	25.83	1,238
10-11	56.83	48.00	25.60	1,246
11-12	55.67	48.00	24.18	789
12-13	55.16	48.00	20.82	318
13-14	60.47	60.00	22.24	293
14-15	56.83	48.00	25.25	208
15-16	66.38	66.00	34.05	143



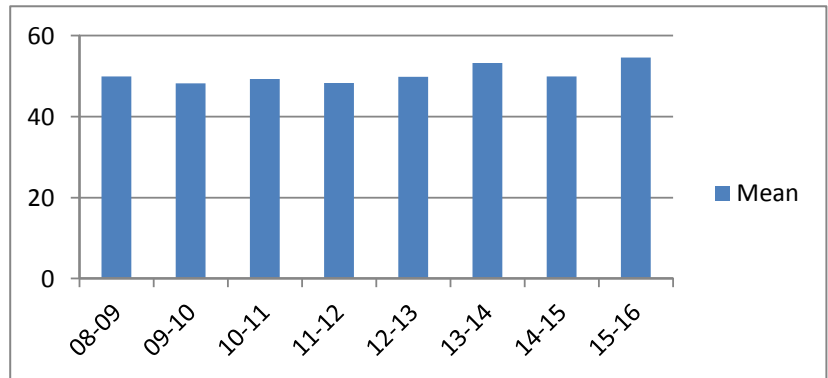


## Average Incarceration Lengths in Months by Felony Class and Offense

Note: Column N indicates the number of felony convictions. Individual offenders can have multiple convictions. Incarceration includes life without parole and death sentences. Probation includes sentences to community corrections.

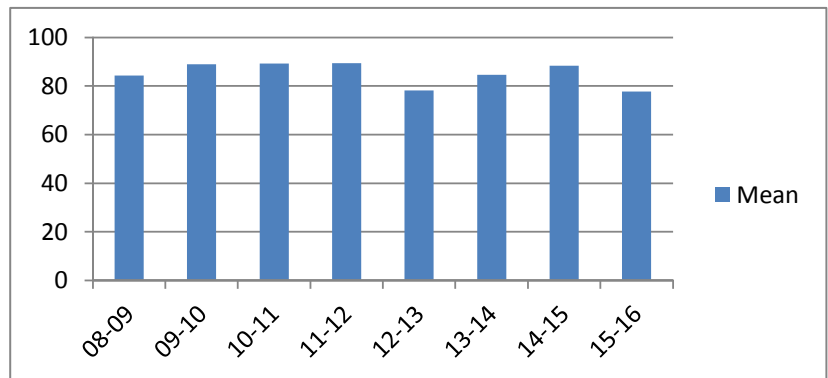
**Average Incarceration Length - Schedule II Cocaine < 1/2 Gram - Standard Offenders**

Fiscal Year	Mean	Median	Standard Deviation	N
08-09	49.95	48.00	14.47	1,042
09-10	48.23	48.00	14.29	1,014
10-11	49.32	48.00	14.89	1,044
11-12	48.29	48.00	14.72	632
12-13	49.83	48.00	13.69	266
13-14	53.29	48.00	17.28	226
14-15	49.92	48.00	14.71	175
15-16	54.58	48.00	21.91	106



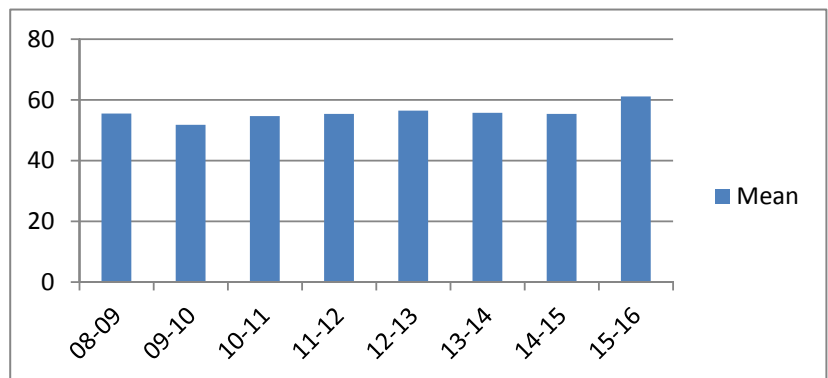
**Average Incarceration Length - Schedule II Cocaine < 1/2 Gram - Multiple Offenders**

Fiscal Year	Mean	Median	Standard Deviation	N
08-09	84.38	84.00	17.62	166
09-10	88.90	84.00	22.06	178
10-11	89.21	73.00	26.57	165
11-12	89.35	84.00	23.53	126
12-13	78.20	72.00	19.06	45
13-14	84.56	72.00	19.29	64
14-15	88.36	84.00	21.77	22
15-16	77.76	72.00	18.04	25



**Average Incarceration Length - Schedule II Drugs: Max \$100,000 Fine - All Offenders**

Fiscal Year	Mean	Median	Standard Deviation	N
08-09	55.57	48.00	22.32	526
09-10	51.76	48.00	22.03	569
10-11	54.67	48.00	23.95	765
11-12	55.44	48.00	23.05	896
12-13	56.50	48.00	26.37	743
13-14	55.73	48.00	24.37	738
14-15	55.38	36.03	34.63	414
15-16	61.13	48.00	28.86	327

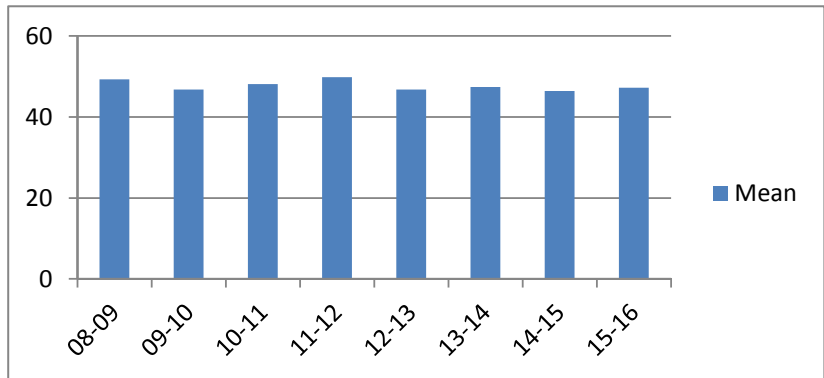


## Average Incarceration Lengths in Months by Felony Class and Offense

Note: Column N indicates the number of felony convictions. Individual offenders can have multiple convictions. Incarceration includes life without parole and death sentences. Probation includes sentences to community corrections.

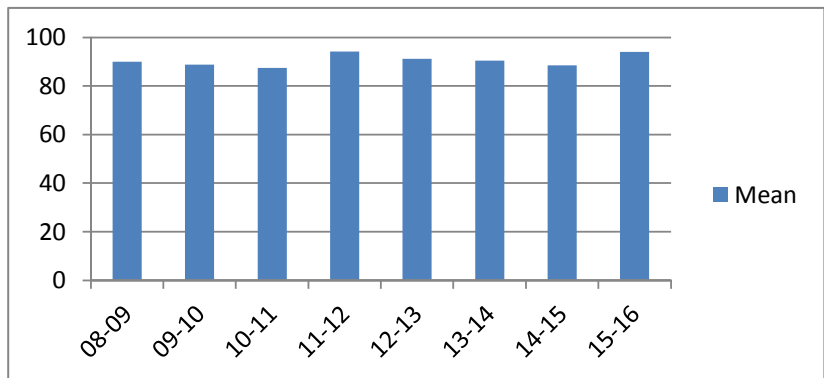
**Average Incarceration Length - Schedule II Drugs: Max \$100,000 Fine - Standard Offenders**

Fiscal Year	Mean	Median	Standard Deviation	N
08-09	49.33	48.00	14.50	444
09-10	46.76	36.00	14.14	503
10-11	48.09	48.00	14.51	650
11-12	49.85	48.00	16.11	794
12-13	46.77	36.00	14.19	601
13-14	47.37	36.00	14.54	597
14-15	46.43	36.00	15.84	355
15-16	47.26	36.00	14.17	236



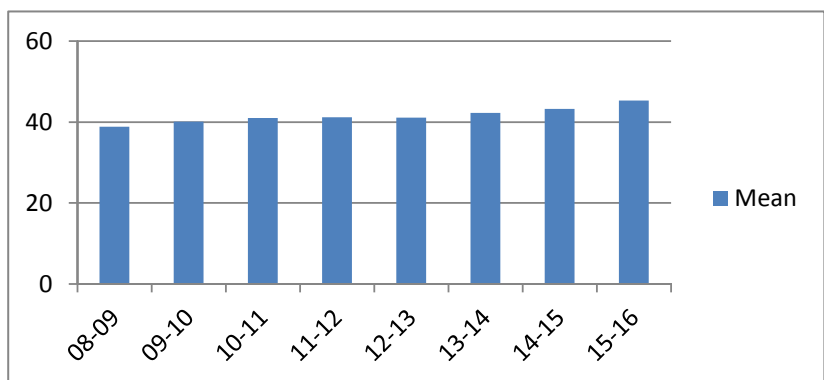
**Average Incarceration Length - Schedule II Drugs: Max \$100,000 Fine - Multiple Offenders**

Fiscal Year	Mean	Median	Standard Deviation	N
08-09	89.92	84.00	22.18	75
09-10	88.86	96.00	21.15	57
10-11	87.39	72.00	19.65	98
11-12	94.16	96.00	20.89	85
12-13	91.25	96.00	19.35	117
13-14	90.50	84.00	20.93	109
14-15	88.54	90.00	24.43	48
15-16	94.00	96.00	22.14	83



**Average Incarceration Length - Class D - All Offenders**

Fiscal Year	Mean	Median	Standard Deviation	N
08-09	38.81	36.00	21.07	6,372
09-10	40.14	36.00	22.62	7,164
10-11	40.98	36.00	23.19	7,553
11-12	41.19	36.00	23.73	7,714
12-13	41.05	36.00	23.35	6,562
13-14	42.27	36.00	24.69	5,695
14-15	43.27	36.00	25.96	4,476
15-16	45.34	36.00	27.82	3,987

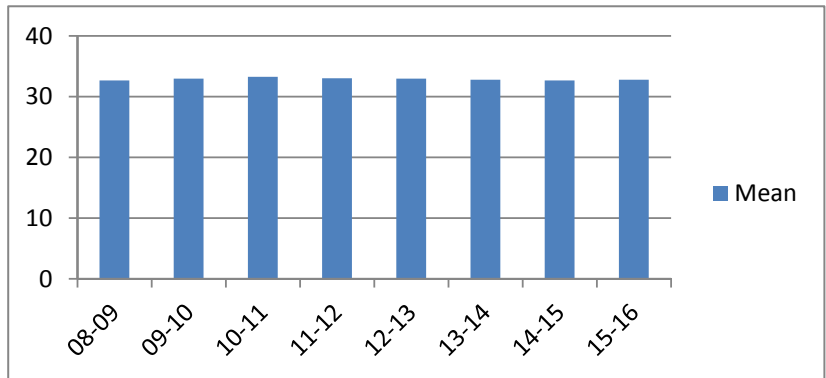


## Average Incarceration Lengths in Months by Felony Class and Offense

Note: Column N indicates the number of felony convictions. Individual offenders can have multiple convictions. Incarceration includes life without parole and death sentences. Probation includes sentences to community corrections.

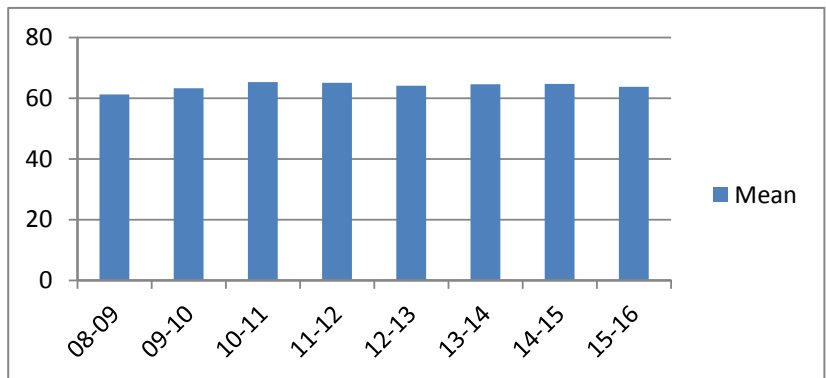
**Average Incarceration Length - Class D - Standard Offenders**

Fiscal Year	Mean	Median	Standard Deviation	N
08-09	32.67	24.03	10.42	5,385
09-10	32.98	30.00	10.52	5,955
10-11	33.31	30.00	11.68	6,177
11-12	33.05	24.03	10.51	6,247
12-13	32.98	25.00	10.22	5,346
13-14	32.78	24.03	10.33	4,436
14-15	32.67	24.03	10.64	3,403
15-16	32.82	30.00	10.45	2,869



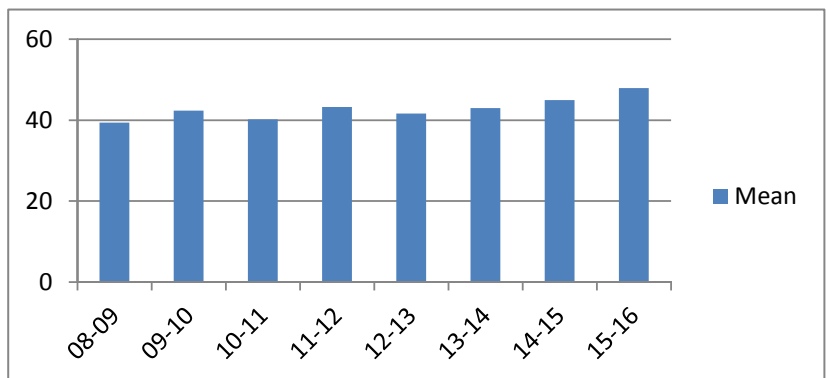
**Average Incarceration Length - Class D - Multiple Offenders**

Fiscal Year	Mean	Median	Standard Deviation	N
08-09	61.26	60.00	17.88	751
09-10	63.19	60.00	18.42	879
10-11	65.24	60.00	17.50	1,040
11-12	65.01	60.00	18.73	1,111
12-13	64.10	60.00	18.49	874
13-14	64.60	60.00	17.86	956
14-15	64.73	60.00	19.46	788
15-16	63.68	60.00	19.08	812



**Average Incarceration Length - Theft: \$1,000 to \$10,000 - All Offenders**

Fiscal Year	Mean	Median	Standard Deviation	N
08-09	39.37	36.00	23.02	2,024
09-10	42.37	36.00	25.30	2,139
10-11	40.22	36.00	21.65	2,288
11-12	43.24	36.00	24.95	2,580
12-13	41.65	36.00	23.76	2,299
13-14	42.93	36.00	25.94	1,873
14-15	44.98	36.00	27.30	1,550
15-16	47.87	36.00	29.78	1,330

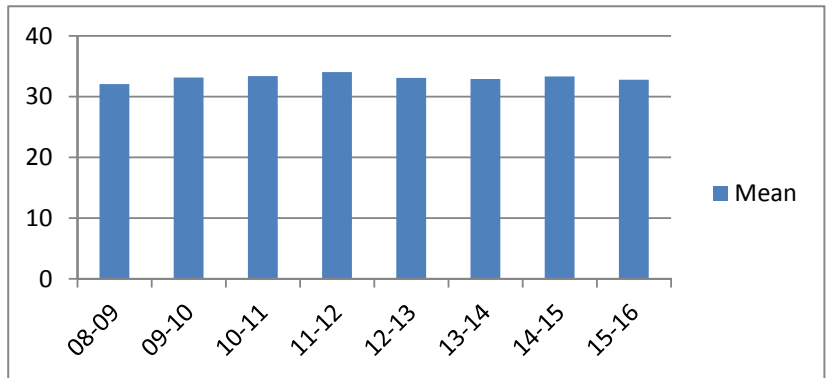


## Average Incarceration Lengths in Months by Felony Class and Offense

Note: Column N indicates the number of felony convictions. Individual offenders can have multiple convictions. Incarceration includes life without parole and death sentences. Probation includes sentences to community corrections.

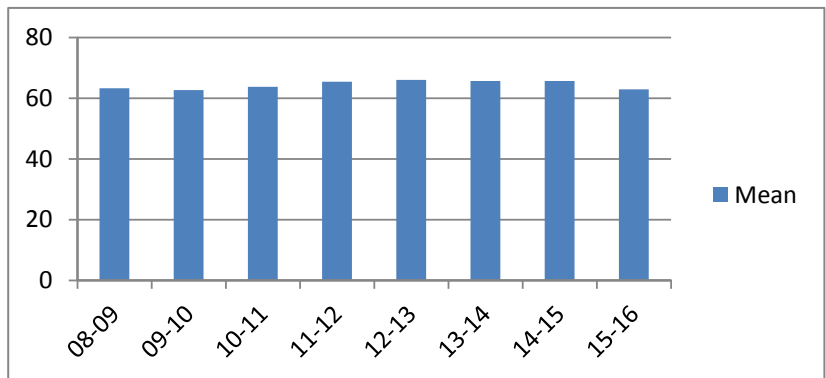
**Average Incarceration Length - Theft: \$1,000 to \$10,000 - Standard Offenders**

Fiscal Year	Mean	Median	Standard Deviation	N
08-09	32.06	24.03	10.04	1,694
09-10	33.17	30.00	10.30	1,709
10-11	33.42	30.00	11.42	1,892
11-12	34.04	36.00	10.68	2,037
12-13	33.11	34.00	10.28	1,841
13-14	32.91	25.00	10.11	1,462
14-15	33.35	30.00	11.18	1,151
15-16	32.79	25.00	10.42	868



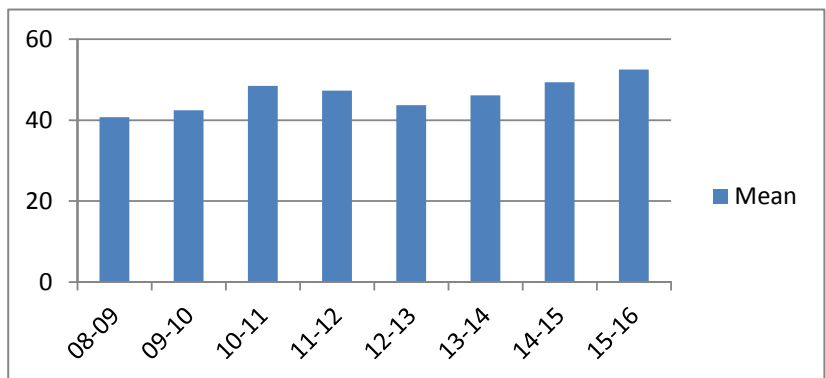
**Average Incarceration Length - Theft: \$1,000 to \$10,000 - Multiple Offenders**

Fiscal Year	Mean	Median	Standard Deviation	N
08-09	63.24	60.00	19.53	245
09-10	62.61	60.00	18.00	292
10-11	63.66	60.00	16.89	309
11-12	65.43	60.00	19.25	408
12-13	65.96	60.00	20.02	340
13-14	65.61	60.00	19.18	309
14-15	65.66	60.00	19.83	290
15-16	62.89	60.00	19.95	352



**Average Incarceration Length - Burglary Other Than Habitation - All Offenders**

Fiscal Year	Mean	Median	Standard Deviation	N
08-09	40.72	36.00	21.98	1,048
09-10	42.46	36.00	23.30	1,034
10-11	48.47	36.00	28.60	1,247
11-12	47.28	36.00	28.68	1,113
12-13	43.64	36.00	23.61	912
13-14	46.09	42.00	25.73	812
14-15	49.32	48.00	30.86	633
15-16	52.51	48.00	32.01	518

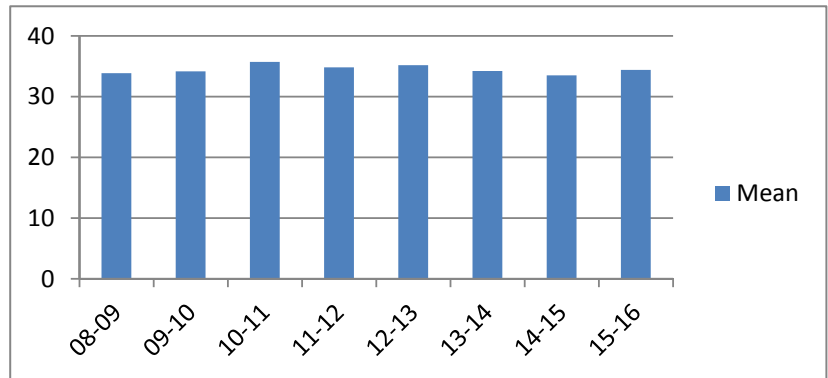


## Average Incarceration Lengths in Months by Felony Class and Offense

Note: Column N indicates the number of felony convictions. Individual offenders can have multiple convictions. Incarceration includes life without parole and death sentences. Probation includes sentences to community corrections.

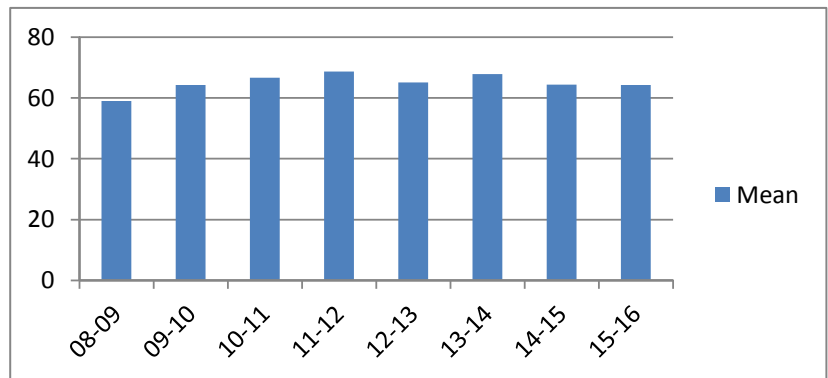
### Average Incarceration Length - Burglary Other Than Habitation - Standard Offenders

Fiscal Year	Mean	Median	Standard Deviation	N
08-09	33.86	36.00	10.49	862
09-10	34.17	36.00	10.97	826
10-11	35.71	36.00	15.35	884
11-12	34.81	36.00	10.78	836
12-13	35.19	36.00	10.61	729
13-14	34.20	36.00	10.60	592
14-15	33.50	30.00	11.09	427
15-16	34.40	36.00	11.74	317



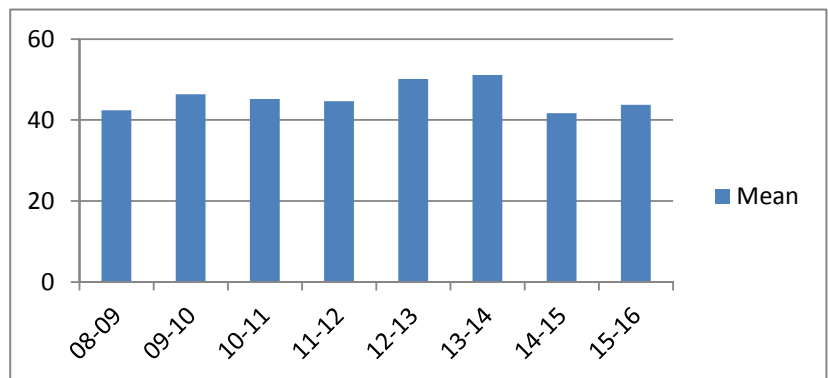
### Average Incarceration Length - Burglary Other Than Habitation - Multiple Offenders

Fiscal Year	Mean	Median	Standard Deviation	N
08-09	58.99	48.00	16.08	136
09-10	64.25	60.00	17.32	150
10-11	66.70	72.00	15.22	270
11-12	68.79	72.00	20.15	187
12-13	65.11	60.00	17.34	135
13-14	67.85	72.00	17.22	172
14-15	64.43	60.00	17.68	129
15-16	64.30	60.00	17.97	145



### Average Incarceration Length - Identity Theft - All Offenders

Fiscal Year	Mean	Median	Standard Deviation	N
08-09	42.43	36.00	23.64	555
09-10	46.40	48.00	25.89	544
10-11	45.22	36.00	29.22	493
11-12	44.66	36.00	25.85	510
12-13	50.14	48.00	30.60	440
13-14	51.14	48.00	29.87	336
14-15	41.67	36.00	20.57	303
15-16	43.76	36.00	25.86	284

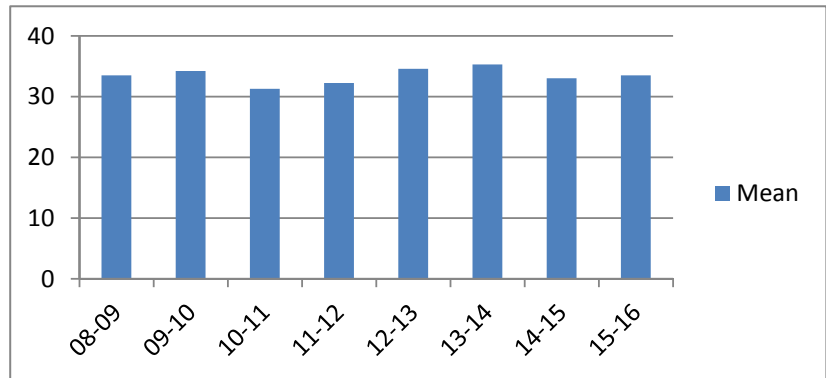


## Average Incarceration Lengths in Months by Felony Class and Offense

Note: Column N indicates the number of felony convictions. Individual offenders can have multiple convictions. Incarceration includes life without parole and death sentences. Probation includes sentences to community corrections.

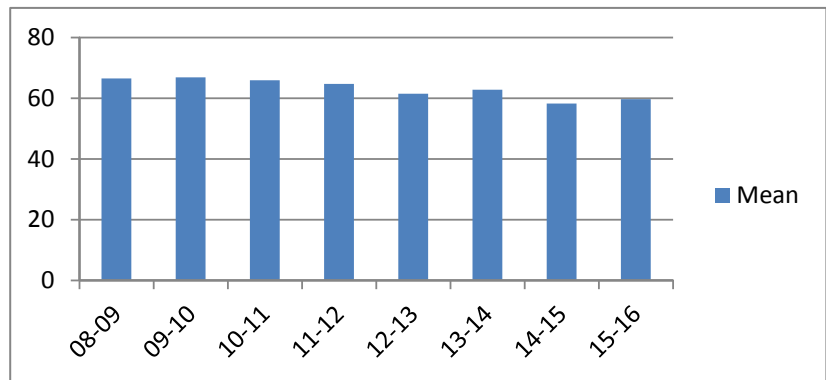
### Average Incarceration Length - Identity Theft - Standard Offenders

Fiscal Year	Mean	Median	Standard Deviation	N
08-09	33.52	30.00	10.49	447
09-10	34.25	36.00	10.39	386
10-11	31.29	24.00	10.20	355
11-12	32.26	24.03	9.75	359
12-13	34.60	36.00	10.48	303
13-14	35.32	36.00	10.45	213
14-15	33.05	36.00	8.51	223
15-16	33.51	36.00	11.33	217



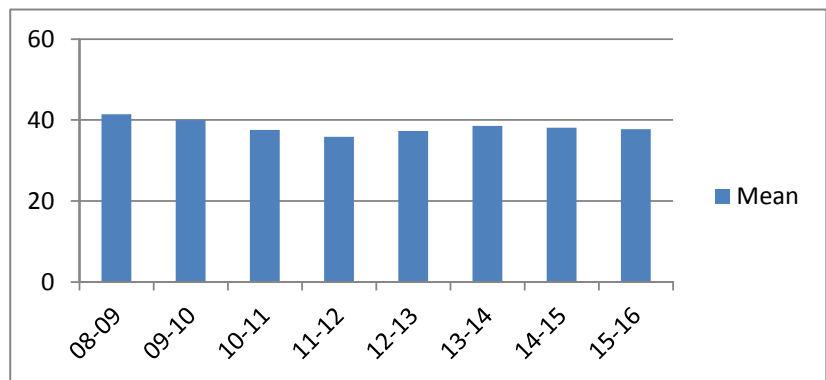
### Average Incarceration Length - Identity Theft - Multiple Offenders

Fiscal Year	Mean	Median	Standard Deviation	N
08-09	66.60	60.00	18.00	80
09-10	66.90	72.00	19.80	127
10-11	65.95	72.00	19.04	99
11-12	64.80	66.00	15.89	125
12-13	61.59	60.00	15.23	83
13-14	62.87	48.00	16.98	92
14-15	58.36	48.00	18.93	66
15-16	59.71	60.00	13.81	41



### Average Incarceration Length - Obtain Drugs by Fraud - All Offenders

Fiscal Year	Mean	Median	Standard Deviation	N
08-09	41.46	48.00	13.83	284
09-10	39.99	36.00	17.50	263
10-11	37.55	36.00	14.63	208
11-12	35.85	36.00	16.19	281
12-13	37.28	24.03	23.96	155
13-14	38.54	36.00	18.93	116
14-15	38.09	24.03	20.24	115
15-16	37.76	36.00	19.40	144

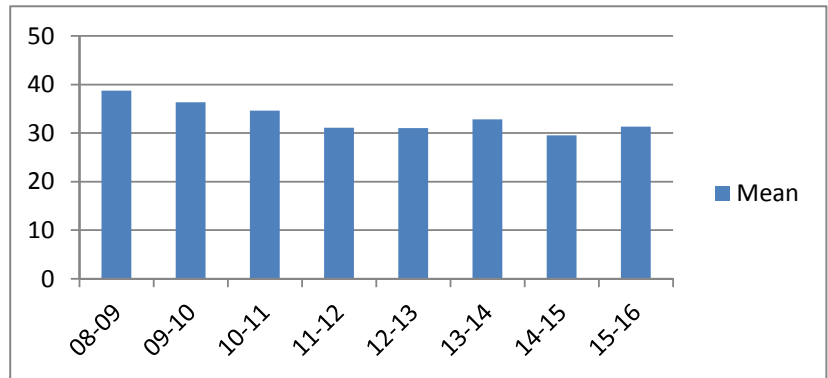


## Average Incarceration Lengths in Months by Felony Class and Offense

Note: Column N indicates the number of felony convictions. Individual offenders can have multiple convictions. Incarceration includes life without parole and death sentences. Probation includes sentences to community corrections.

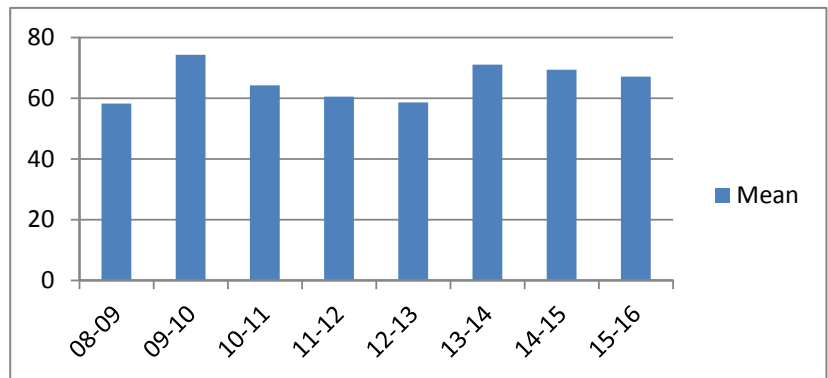
### Average Incarceration Length - Obtain Drugs by Fraud - Standard Offenders

Fiscal Year	Mean	Median	Standard Deviation	N
08-09	38.76	48.00	11.35	250
09-10	36.32	36.00	9.55	246
10-11	34.59	36.00	10.74	188
11-12	31.08	24.00	8.88	238
12-13	31.04	24.00	9.46	139
13-14	32.85	36.00	9.70	101
14-15	29.55	24.00	7.82	93
15-16	31.35	36.00	7.10	126



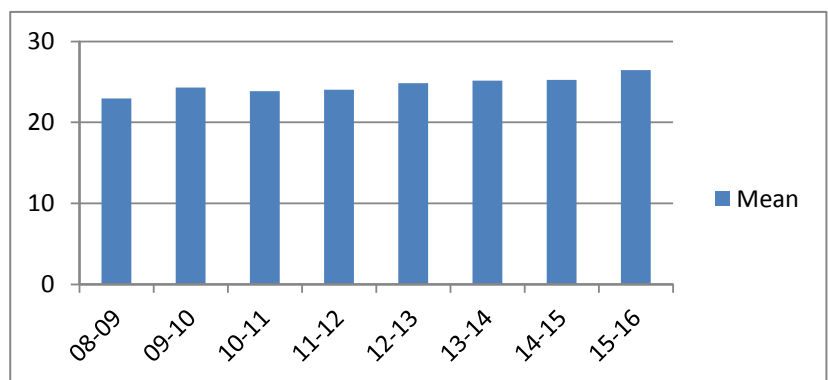
### Average Incarceration Length - Obtain Drugs by Fraud - Multiple Offenders

Fiscal Year	Mean	Median	Standard Deviation	N
08-09	58.26	60.00	10.18	31
09-10	74.40	72.00	21.47	5
10-11	64.24	72.00	11.18	17
11-12	60.59	48.00	17.59	41
12-13	58.67	48.00	12.65	9
13-14	71.08	72.00	15.07	13
14-15	69.47	72.00	11.01	19
15-16	67.20	72.00	10.73	5



### Average Incarceration Length - Class E - All Offenders

Fiscal Year	Mean	Median	Standard Deviation	N
08-09	22.95	24.00	12.05	9,255
09-10	24.32	24.00	13.55	8,687
10-11	23.87	24.00	13.31	9,010
11-12	24.03	24.00	13.17	8,259
12-13	24.83	24.00	14.29	7,571
13-14	25.15	24.00	15.32	6,668
14-15	25.25	24.00	14.09	5,208
15-16	26.47	24.00	14.81	4,535

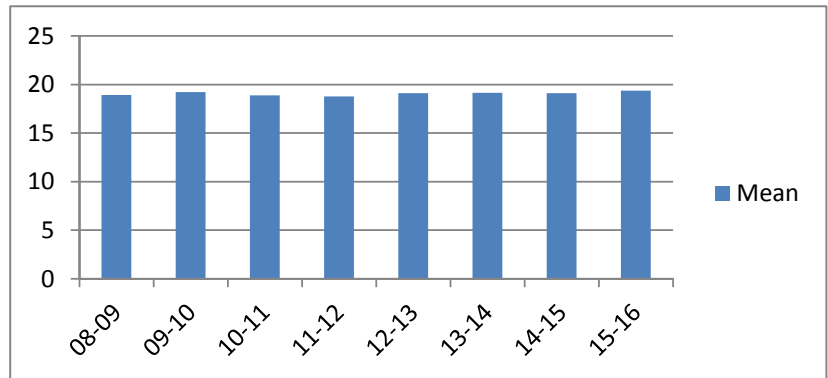


## Average Incarceration Lengths in Months by Felony Class and Offense

Note: Column N indicates the number of felony convictions. Individual offenders can have multiple convictions. Incarceration includes life without parole and death sentences. Probation includes sentences to community corrections.

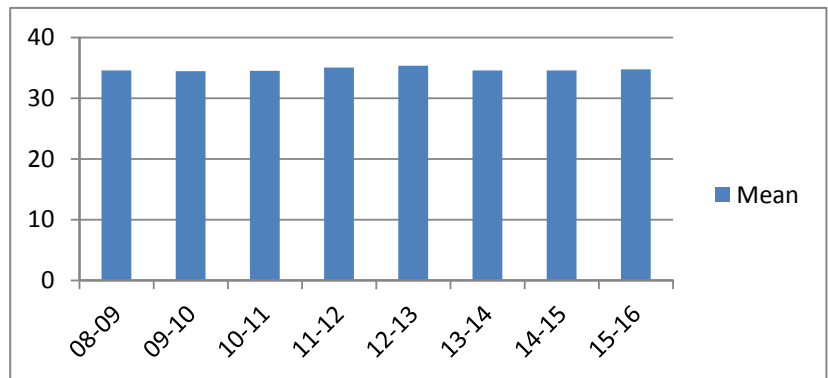
**Average Incarceration Length - Class E - Standard Offenders**

Fiscal Year	Mean	Median	Standard Deviation	N
08-09	18.91	24.00	6.12	7,472
09-10	19.23	24.00	6.41	6,717
10-11	18.87	24.00	6.58	6,920
11-12	18.77	24.00	6.26	6,247
12-13	19.10	24.00	6.49	5,716
13-14	19.15	24.00	6.94	4,952
14-15	19.12	24.00	6.29	3,753
15-16	19.35	24.00	6.69	3,017



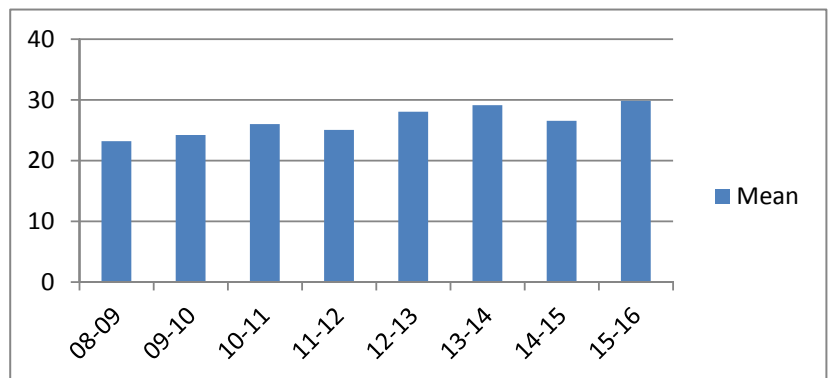
**Average Incarceration Length - Class E - Multiple Offenders**

Fiscal Year	Mean	Median	Standard Deviation	N
08-09	34.58	36.00	10.17	1,384
09-10	34.45	36.00	10.51	1,415
10-11	34.52	36.00	10.53	1,575
11-12	35.10	36.00	10.53	1,554
12-13	35.36	36.00	10.74	1,292
13-14	34.61	36.00	10.56	1,252
14-15	34.62	36.00	10.56	1,079
15-16	34.78	36.00	11.28	1,154



**Average Incarceration Length - Forgery: Up to \$1,000 - All Offenders**

Fiscal Year	Mean	Median	Standard Deviation	N
08-09	23.17	24.00	11.58	2,517
09-10	24.19	24.00	12.51	1,810
10-11	25.96	24.00	14.89	1,555
11-12	25.02	24.00	14.32	1,237
12-13	28.02	24.00	17.46	1,352
13-14	29.10	24.00	23.23	796
14-15	26.54	24.00	13.88	525
15-16	29.81	24.00	16.03	430



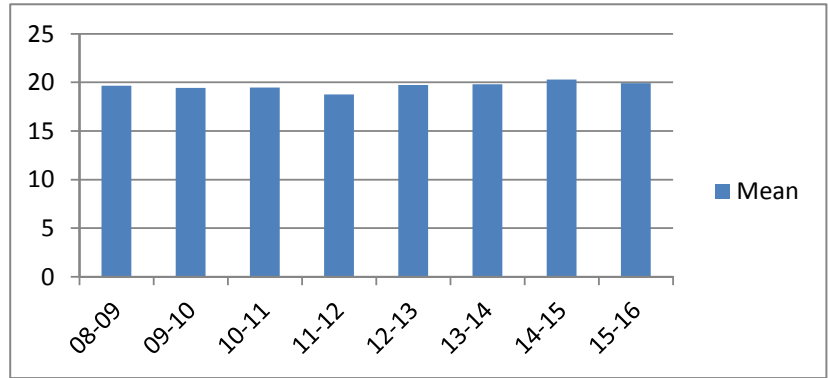


## Average Incarceration Lengths in Months by Felony Class and Offense

Note: Column N indicates the number of felony convictions. Individual offenders can have multiple convictions. Incarceration includes life without parole and death sentences. Probation includes sentences to community corrections.

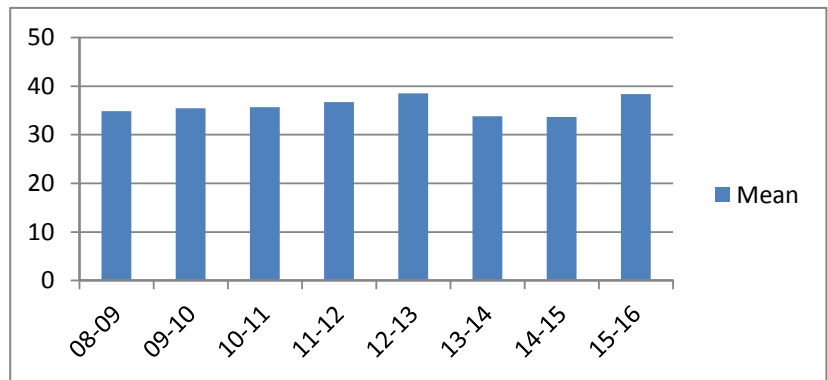
**Average Incarceration Length - Forgery: Up to \$1,000 - Standard Offenders**

Fiscal Year	Mean	Median	Standard Deviation	N
08-09	19.65	24.00	5.44	2,122
09-10	19.44	24.00	6.08	1,421
10-11	19.49	24.00	6.57	1,147
11-12	18.76	24.00	6.22	924
12-13	19.74	24.00	5.97	1,006
13-14	19.83	24.00	7.67	573
14-15	20.30	24.00	5.77	370
15-16	19.92	24.00	6.25	267



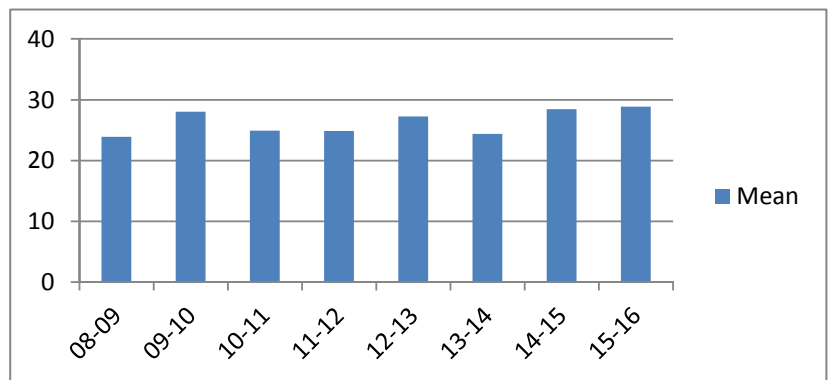
**Average Incarceration Length - Forgery: Up to \$1,000 - Multiple Offenders**

Fiscal Year	Mean	Median	Standard Deviation	N
08-09	34.89	36.00	9.98	302
09-10	35.44	36.00	10.77	278
10-11	35.68	36.00	11.13	274
11-12	36.71	36.00	10.33	229
12-13	38.49	36.00	9.65	157
13-14	33.81	36.00	9.91	129
14-15	33.68	36.00	10.55	107
15-16	38.41	36.00	8.48	107



**Average Incarceration Length - Burglary: Auto - All Offenders**

Fiscal Year	Mean	Median	Standard Deviation	N
08-09	23.92	24.00	12.08	1,114
09-10	28.05	24.00	16.90	1,320
10-11	24.91	24.00	13.91	1,614
11-12	24.84	24.00	12.37	1,361
12-13	27.26	24.00	14.92	880
13-14	24.38	24.00	13.59	976
14-15	28.44	24.00	16.00	772
15-16	28.86	24.00	14.57	727

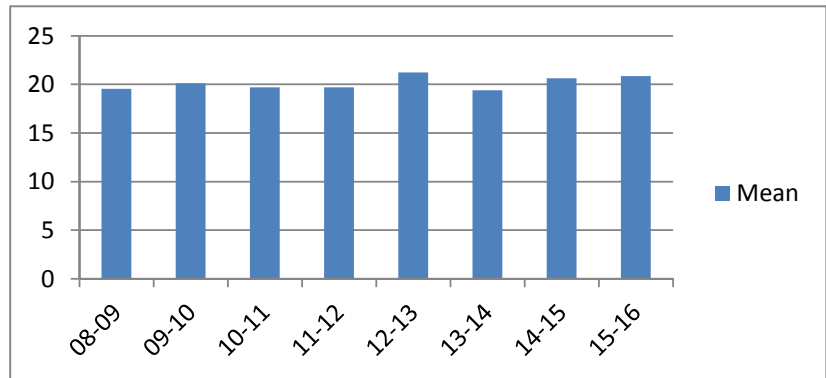


## Average Incarceration Lengths in Months by Felony Class and Offense

Note: Column N indicates the number of felony convictions. Individual offenders can have multiple convictions. Incarceration includes life without parole and death sentences. Probation includes sentences to community corrections.

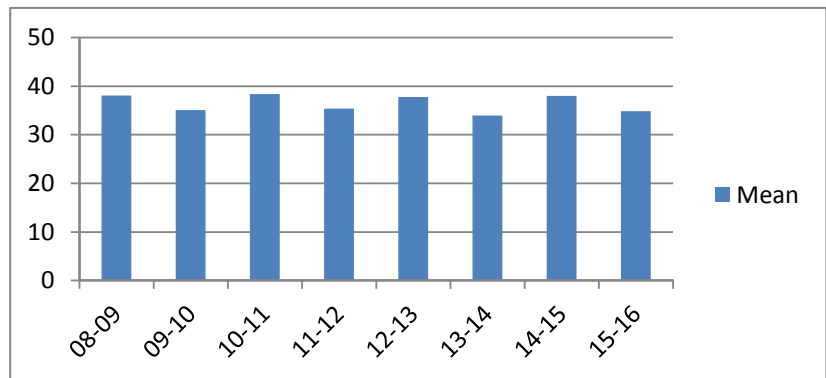
**Average Incarceration Length - Burglary: Auto - Standard Offenders**

Fiscal Year	Mean	Median	Standard Deviation	N
08-09	19.56	24.00	6.06	902
09-10	20.09	24.00	5.83	950
10-11	19.70	24.00	7.16	1,277
11-12	19.70	24.00	5.81	1,016
12-13	21.24	24.00	7.59	657
13-14	19.39	24.00	6.24	766
14-15	20.65	24.00	5.90	548
15-16	20.85	24.00	5.73	411



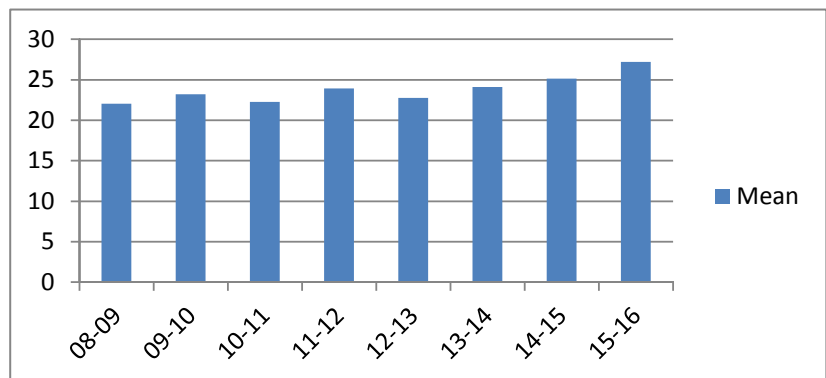
**Average Incarceration Length - Burglary: Auto - Multiple Offenders**

Fiscal Year	Mean	Median	Standard Deviation	N
08-09	38.04	36.00	10.42	161
09-10	35.07	36.00	10.44	212
10-11	38.40	36.00	10.51	246
11-12	35.39	36.00	10.69	272
12-13	37.75	36.00	11.88	165
13-14	33.98	36.00	9.72	147
14-15	37.96	36.00	10.42	137
15-16	34.82	36.00	12.83	263



**Average Incarceration Length - Theft: \$500 - \$1,000 - All Offenders**

Fiscal Year	Mean	Median	Standard Deviation	N
08-09	22.04	24.00	12.88	962
09-10	23.21	24.00	12.73	1,047
10-11	22.28	24.00	12.44	1,099
11-12	23.94	24.00	13.98	1,130
12-13	22.76	24.00	13.59	1,026
13-14	24.13	24.00	13.69	940
14-15	25.17	24.00	14.97	741
15-16	27.22	24.00	15.96	610

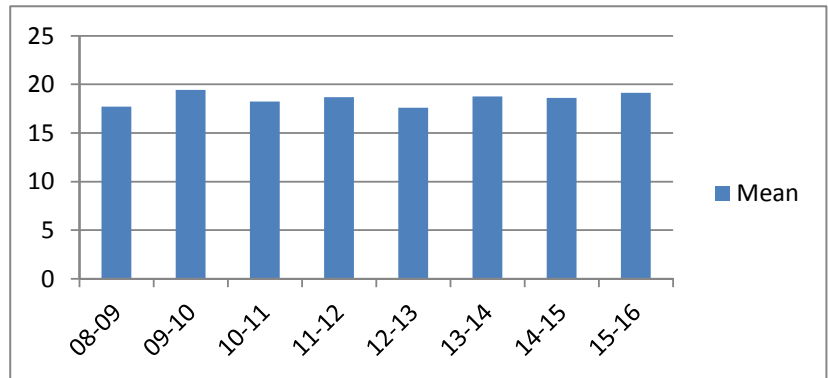


## Average Incarceration Lengths in Months by Felony Class and Offense

Note: Column N indicates the number of felony convictions. Individual offenders can have multiple convictions. Incarceration includes life without parole and death sentences. Probation includes sentences to community corrections.

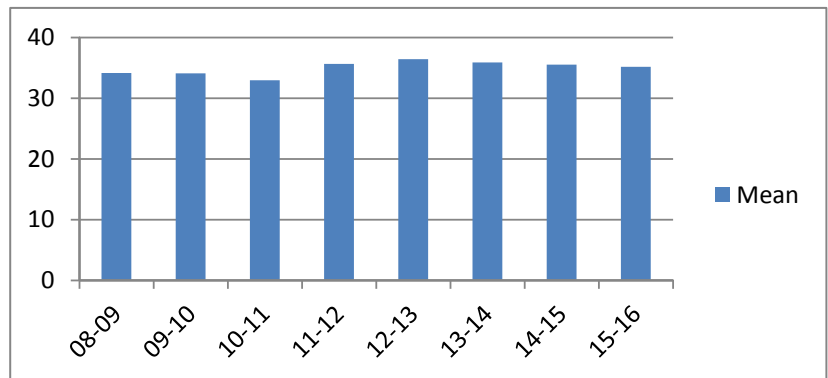
**Average Incarceration Length - Theft: \$500 - \$1,000 - Standard Offenders**

Fiscal Year	Mean	Median	Standard Deviation	N
08-09	17.70	12.02	6.35	782
09-10	19.42	24.00	6.92	864
10-11	18.22	18.00	6.15	888
11-12	18.69	24.00	6.28	891
12-13	17.60	12.00	6.15	817
13-14	18.76	24.00	6.19	728
14-15	18.62	24.00	6.13	543
15-16	19.12	24.00	6.75	395



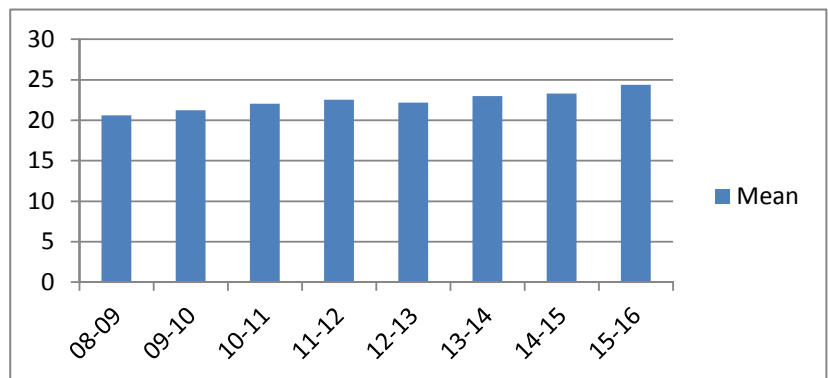
**Average Incarceration Length - Theft: \$500 - \$1,000 - Multiple Offenders**

Fiscal Year	Mean	Median	Standard Deviation	N
08-09	34.17	36.00	10.52	131
09-10	34.09	36.00	11.32	132
10-11	32.95	24.03	10.19	165
11-12	35.65	36.00	10.74	167
12-13	36.42	36.00	11.68	148
13-14	35.92	36.00	10.17	159
14-15	35.54	36.00	10.77	140
15-16	35.16	36.00	12.51	159



**Average Incarceration Length - Schedule VI Drugs: Not < 1/2 Ounce - All Offenders**

Fiscal Year	Mean	Median	Standard Deviation	N
08-09	20.59	24.00	9.64	603
09-10	21.26	24.00	10.26	668
10-11	22.03	24.00	11.04	705
11-12	22.52	24.00	11.54	697
12-13	22.19	24.00	10.78	639
13-14	22.98	24.00	11.85	601
14-15	23.32	24.00	11.37	436
15-16	24.37	24.00	12.86	298

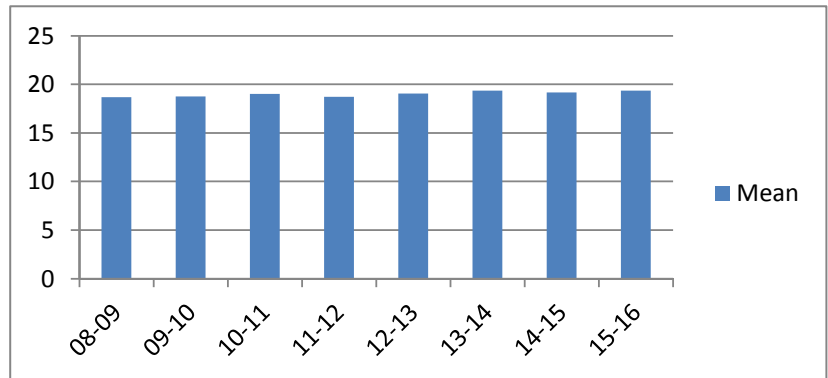


## Average Incarceration Lengths in Months by Felony Class and Offense

Note: Column N indicates the number of felony convictions. Individual offenders can have multiple convictions. Incarceration includes life without parole and death sentences. Probation includes sentences to community corrections.

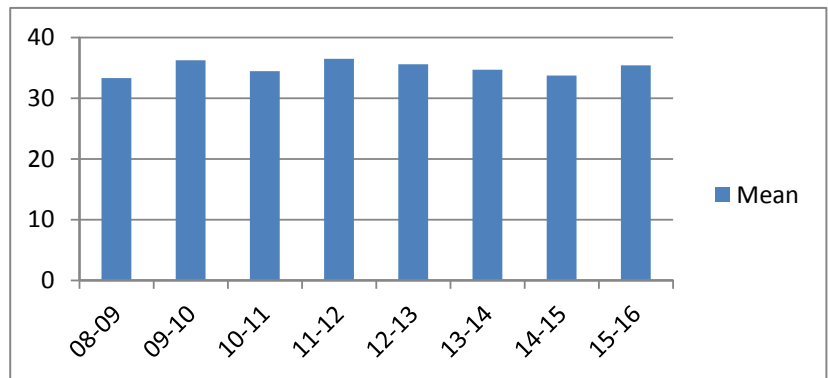
### Average Incarceration Length - Schedule VI Drugs: Not < 1/2 Ounce - Standard Offenders

Fiscal Year	Mean	Median	Standard Deviation	N
08-09	18.68	20.00	6.49	537
09-10	18.76	24.00	6.75	579
10-11	19.02	24.00	6.20	598
11-12	18.71	24.00	6.17	569
12-13	19.07	24.00	6.02	534
13-14	19.37	24.00	6.70	494
14-15	19.18	24.00	6.36	334
15-16	19.37	24.00	6.46	217



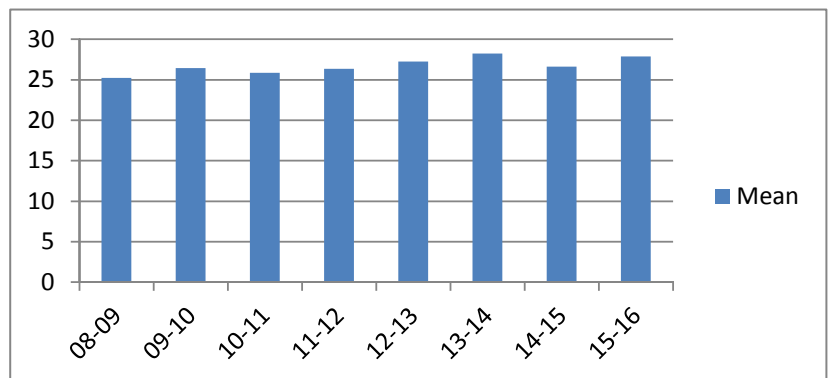
### Average Incarceration Length - Schedule VI Drugs: Not < 1/2 Ounce - Multiple Offenders

Fiscal Year	Mean	Median	Standard Deviation	N
08-09	33.33	30.00	10.23	58
09-10	36.23	36.00	11.39	79
10-11	34.43	36.00	9.94	88
11-12	36.47	36.00	10.57	108
12-13	35.57	36.00	9.64	82
13-14	34.71	36.00	10.39	88
14-15	33.73	36.00	9.79	90
15-16	35.44	36.00	10.07	64



### Average Incarceration Length - Habitual Traffic Offender - All Offenders

Fiscal Year	Mean	Median	Standard Deviation	N
08-09	25.22	24.00	13.53	547
09-10	26.45	24.00	15.15	445
10-11	25.87	24.00	13.75	483
11-12	26.37	24.00	14.58	422
12-13	27.26	24.00	15.02	413
13-14	28.25	24.00	16.06	374
14-15	26.61	24.00	13.07	274
15-16	27.90	24.00	14.98	230

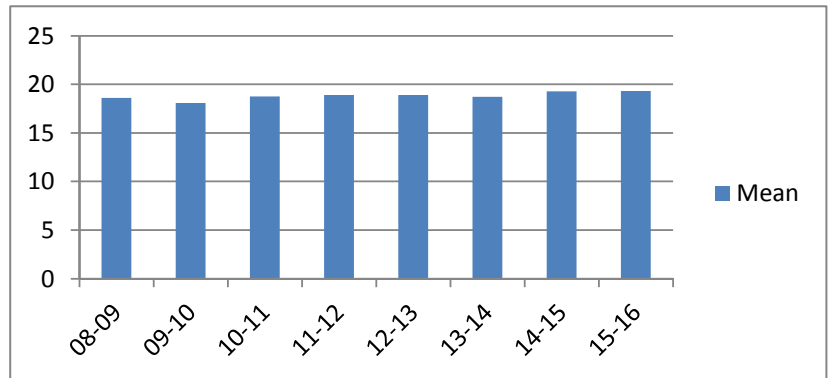


## Average Incarceration Lengths in Months by Felony Class and Offense

Note: Column N indicates the number of felony convictions. Individual offenders can have multiple convictions. Incarceration includes life without parole and death sentences. Probation includes sentences to community corrections.

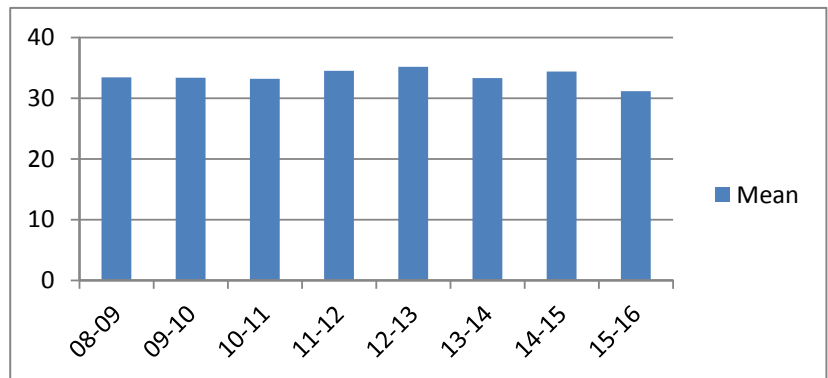
**Average Incarceration Length - Habitual Traffic Offender - Standard Offenders**

Fiscal Year	Mean	Median	Standard Deviation	N
08-09	18.60	18.00	5.80	367
09-10	18.09	18.00	5.78	275
10-11	18.76	18.00	5.99	305
11-12	18.89	24.00	5.75	273
12-13	18.92	22.50	5.98	262
13-14	18.71	18.00	6.32	217
14-15	19.28	24.00	6.34	167
15-16	19.32	24.00	5.32	127



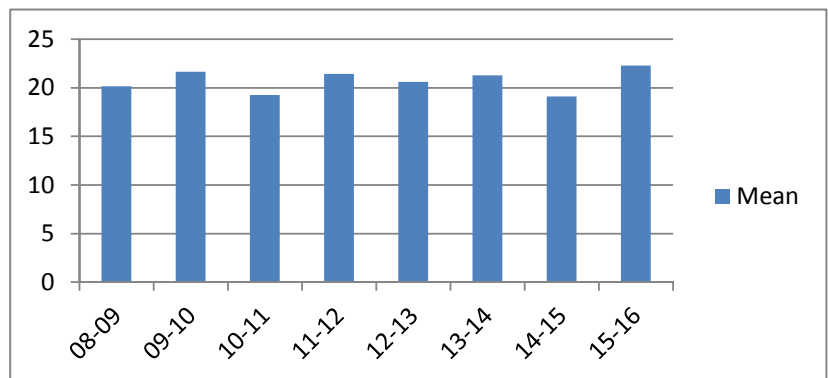
**Average Incarceration Length - Habitual Traffic Offender - Multiple Offenders**

Fiscal Year	Mean	Median	Standard Deviation	N
08-09	33.43	36.00	8.94	145
09-10	33.39	36.00	9.68	132
10-11	33.19	36.00	9.19	145
11-12	34.52	36.00	9.80	116
12-13	35.15	36.00	9.97	112
13-14	33.32	36.00	9.64	105
14-15	34.39	36.00	10.45	84
15-16	31.19	30.00	8.76	79



**Average Incarceration Length - Failure to Appear (Felony) - All Offenders**

Fiscal Year	Mean	Median	Standard Deviation	N
08-09	20.17	12.00	13.15	377
09-10	21.67	18.00	13.75	330
10-11	19.26	12.00	10.53	376
11-12	21.44	24.00	12.62	356
12-13	20.63	18.00	11.94	391
13-14	21.28	18.00	12.93	362
14-15	19.12	12.00	9.85	274
15-16	22.29	15.00	14.65	216

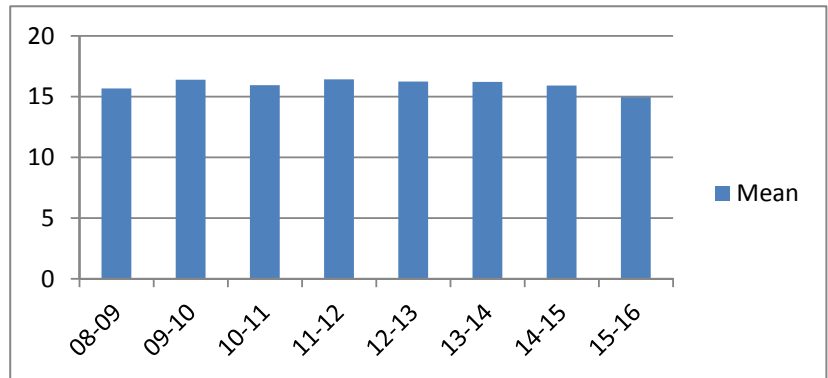


## Average Incarceration Lengths in Months by Felony Class and Offense

Note: Column N indicates the number of felony convictions. Individual offenders can have multiple convictions. Incarceration includes life without parole and death sentences. Probation includes sentences to community corrections.

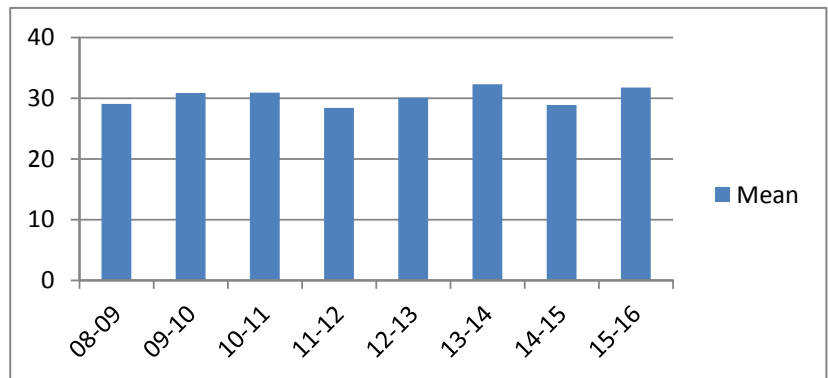
**Average Incarceration Length - Failure to Appear  
(Felony) - Standard Offenders**

Fiscal Year	Mean	Median	Standard Deviation	N
08-09	15.67	12.00	5.38	305
09-10	16.39	12.00	5.69	254
10-11	15.92	12.00	5.51	308
11-12	16.40	12.00	5.56	263
12-13	16.22	12.00	5.51	301
13-14	16.19	12.00	5.82	278
14-15	15.91	12.00	5.36	220
15-16	14.94	12.00	5.04	144



**Average Incarceration Length - Failure to Appear  
(Felony) - Multiple Offenders**

Fiscal Year	Mean	Median	Standard Deviation	N
08-09	29.04	24.00	9.02	50
09-10	30.86	24.00	10.20	56
10-11	30.92	24.00	10.02	59
11-12	28.41	24.00	7.45	69
12-13	30.07	24.00	9.13	68
13-14	32.29	24.00	10.36	65
14-15	28.88	24.00	8.45	48
15-16	31.75	24.00	9.84	55



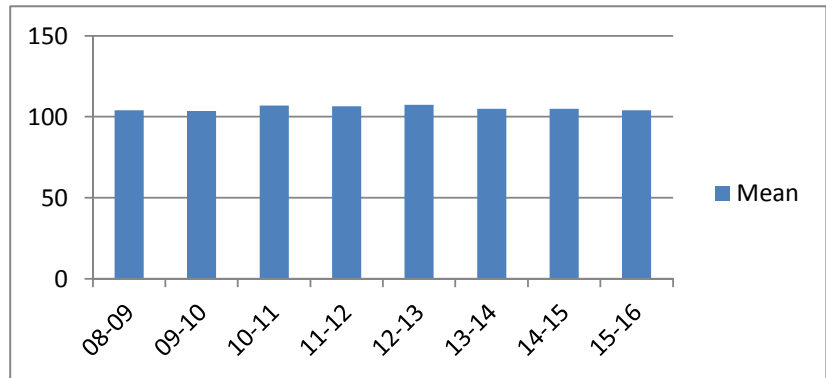
## Average Probation Lengths in Months by Felony Class

Note: Column N indicates the number of felony convictions. Individual offenders can have multiple convictions. Incarceration includes life without parole and death sentences. Probation includes sentences to community corrections.

**Average Probation Length - Felony Class B - All Offenders**

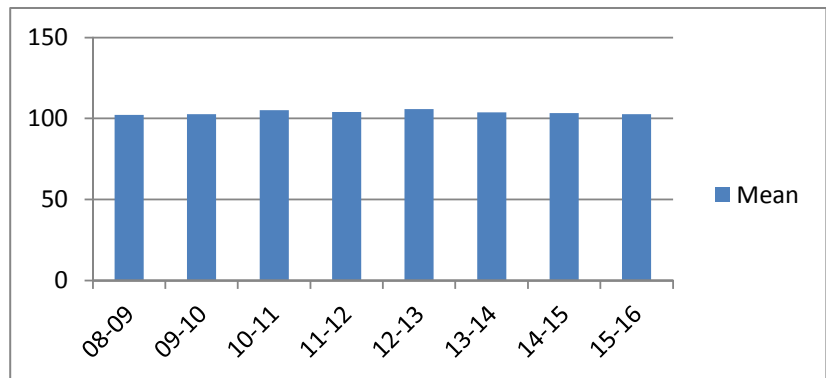
Fiscal Year	Mean	Median	Standard Deviation	N
08-09	104.02	96.00	22.37	563
09-10	103.62	96.00	20.19	562
10-11	106.93	96.00	20.28	664
11-12	106.45	96.00	23.06	584
12-13	107.27	96.00	24.65	691
13-14	104.89	96.00	19.39	543
14-15	104.87	96.00	17.62	685
15-16	103.93	96.00	15.65	620

The table for multiple offenders was not included due to low occurrence frequencies.



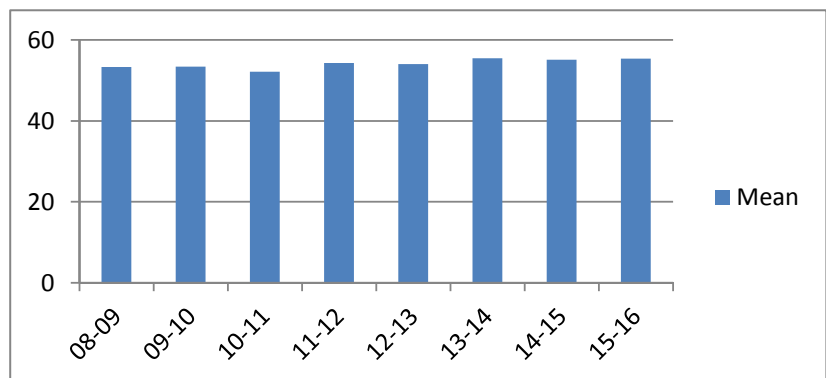
**Average Probation Length - Felony Class B - Standard Offenders**

Fiscal Year	Mean	Median	Standard Deviation	N
08-09	102.30	96.00	20.01	537
09-10	102.60	96.00	18.37	550
10-11	105.17	96.00	17.79	626
11-12	103.93	96.00	18.79	537
12-13	105.80	96.00	22.63	654
13-14	103.70	96.00	16.73	525
14-15	103.26	96.00	15.57	645
15-16	102.61	96.00	12.81	595



**Average Probation Length - Class C - All Offenders**

Fiscal Year	Mean	Median	Standard Deviation	N
08-09	53.32	48.00	23.36	2,081
09-10	53.43	48.00	22.78	2,107
10-11	52.14	48.00	21.18	2,423
11-12	54.31	48.00	20.68	2,542
12-13	54.02	48.00	21.71	2,745
13-14	55.48	48.00	23.17	2,763
14-15	55.07	48.00	22.37	2,743
15-16	55.41	48.00	22.64	3,269

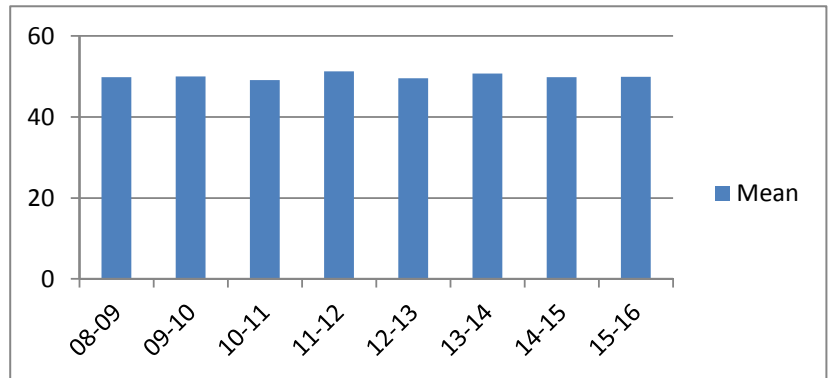


## Average Probation Lengths in Months by Felony Class

Note: Column N indicates the number of felony convictions. Individual offenders can have multiple convictions. Incarceration includes life without parole and death sentences. Probation includes sentences to community corrections.

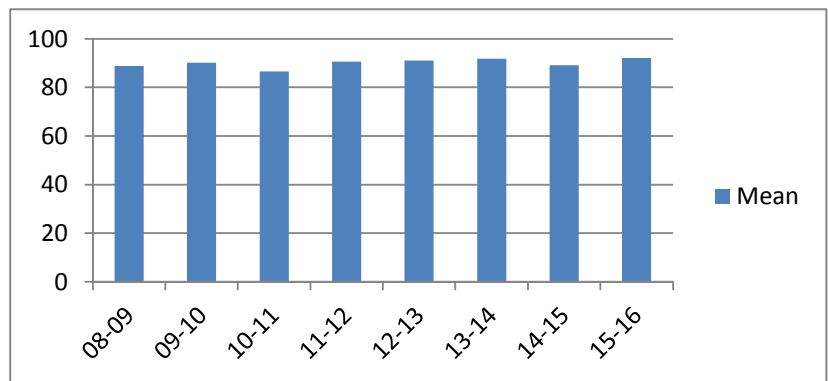
**Average Probation Length - Class C - Standard Offenders**

Fiscal Year	Mean	Median	Standard Deviation	N
08-09	49.84	48.00	19.86	1,903
09-10	50.05	48.00	18.93	1,935
10-11	49.13	48.00	17.89	2,238
11-12	51.28	48.00	17.17	2,346
12-13	49.60	48.00	16.31	2,463
13-14	50.76	48.00	17.66	2,475
14-15	49.84	48.00	16.59	2,396
15-16	49.94	48.00	15.96	2,861



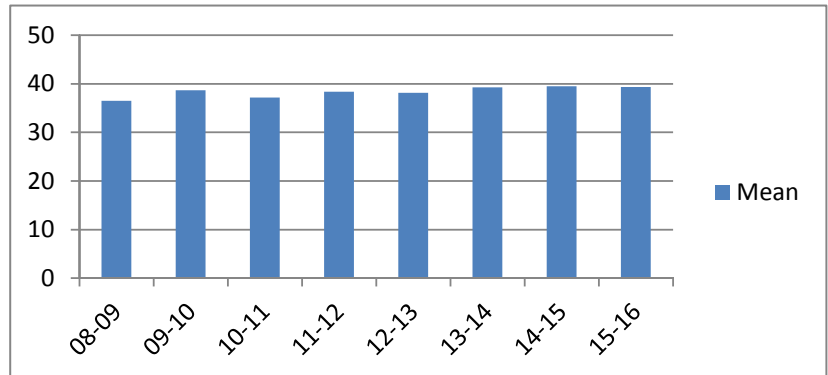
**Average Probation Length - Class C - Multiple Offenders**

Fiscal Year	Mean	Median	Standard Deviation	N
08-09	88.79	84.00	24.06	155
09-10	90.10	87.02	25.13	154
10-11	86.53	84.00	22.10	170
11-12	90.63	84.00	23.14	180
12-13	90.98	96.00	22.01	254
13-14	91.84	96.00	21.78	245
14-15	89.11	84.00	20.81	292
15-16	92.13	96.00	18.51	331



**Average Probation Length - Class D - All Offenders**

Fiscal Year	Mean	Median	Standard Deviation	N
08-09	36.48	36.00	17.76	3,083
09-10	38.63	36.00	21.59	3,390
10-11	37.14	36.00	17.25	3,488
11-12	38.38	36.00	21.72	3,748
12-13	38.15	36.00	19.56	3,982
13-14	39.30	36.00	20.49	3,896
14-15	39.48	36.00	19.54	4,121
15-16	39.36	36.00	18.54	3,945



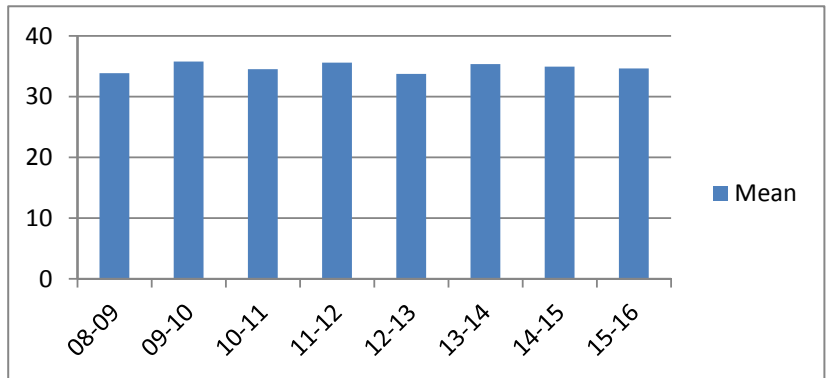


## Average Probation Lengths in Months by Felony Class

Note: Column N indicates the number of felony convictions. Individual offenders can have multiple convictions. Incarceration includes life without parole and death sentences. Probation includes sentences to community corrections.

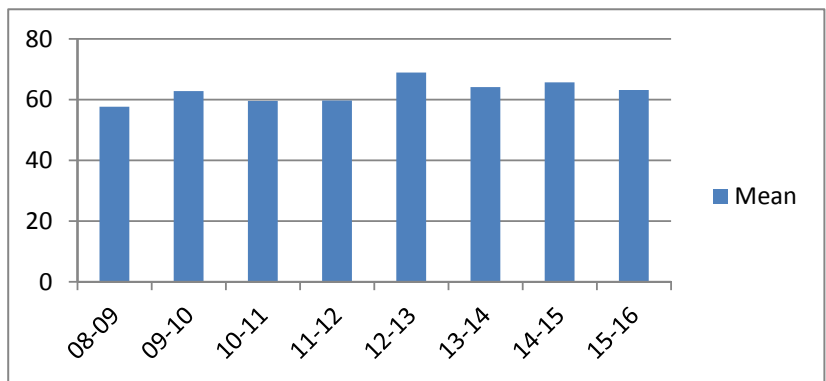
**Average Probation Length - Class D - Standard Offenders**

Fiscal Year	Mean	Median	Standard Deviation	N
08-09	33.89	25.00	13.99	2,848
09-10	35.78	36.00	17.71	3,147
10-11	34.56	36.00	13.73	3,208
11-12	35.61	36.00	18.72	3,418
12-13	33.76	36.00	12.63	3,564
13-14	35.37	36.00	15.22	3,483
14-15	34.94	36.00	13.68	3,607
15-16	34.64	36.00	12.13	3,415



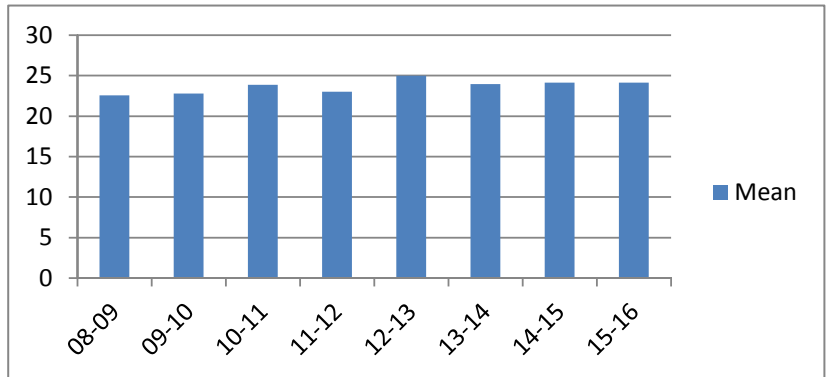
**Average Probation Length - Class D - Multiple Offenders**

Fiscal Year	Mean	Median	Standard Deviation	N
08-09	57.65	48.00	19.39	176
09-10	62.83	60.00	20.19	179
10-11	59.59	60.00	17.33	231
11-12	59.62	60.00	23.81	266
12-13	68.86	66.13	20.15	354
13-14	64.13	60.00	18.36	336
14-15	65.64	60.00	20.12	432
15-16	63.15	60.00	17.49	430



**Average Probation Length - Class E - All Offenders**

Fiscal Year	Mean	Median	Standard Deviation	N
08-09	22.56	24.00	13.00	3,991
09-10	22.79	24.00	12.23	4,048
10-11	23.89	24.00	15.18	3,913
11-12	23.01	24.00	12.25	3,827
12-13	24.98	24.00	14.83	4,176
13-14	23.95	24.00	12.54	4,240
14-15	24.15	24.00	12.93	4,240
15-16	24.14	24.00	12.10	4,580

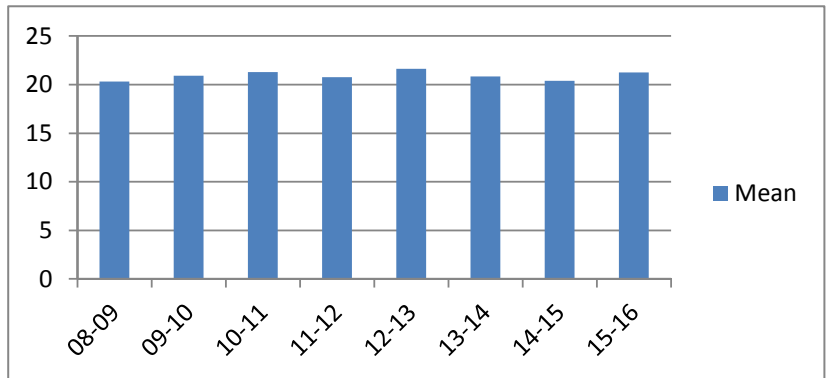


## Average Probation Lengths in Months by Felony Class

Note: Column N indicates the number of felony convictions. Individual offenders can have multiple convictions. Incarceration includes life without parole and death sentences. Probation includes sentences to community corrections.

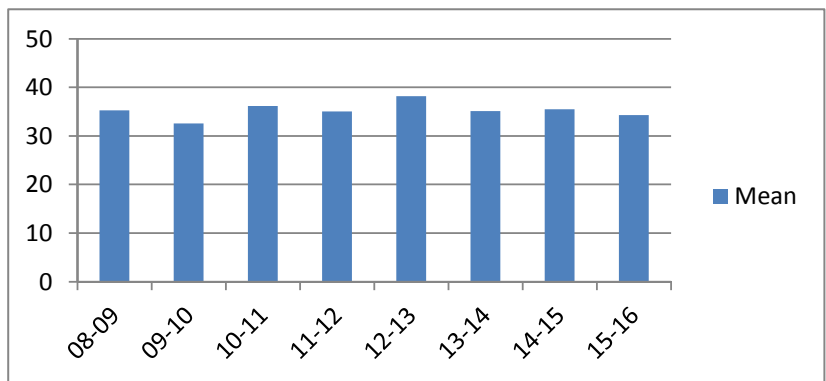
**Average Probation Length - Class E - Standard Offenders**

Fiscal Year	Mean	Median	Standard Deviation	N
08-09	20.33	24.00	9.97	3,585
09-10	20.92	24.00	10.03	3,631
10-11	21.29	24.00	12.92	3,421
11-12	20.77	24.00	9.44	3,391
12-13	21.62	24.00	12.00	3,530
13-14	20.85	24.00	8.81	3,592
14-15	20.39	24.00	8.84	3,465
15-16	21.26	24.00	8.33	3,862



**Average Probation Length - Class E - Multiple Offenders**

Fiscal Year	Mean	Median	Standard Deviation	N
08-09	35.24	36.00	10.17	313
09-10	32.54	24.00	9.98	326
10-11	36.17	36.00	10.68	402
11-12	35.04	36.00	10.47	352
12-13	38.19	36.00	10.65	503
13-14	35.14	36.00	10.83	501
14-15	35.47	36.00	10.70	607
15-16	34.33	36.00	10.42	589



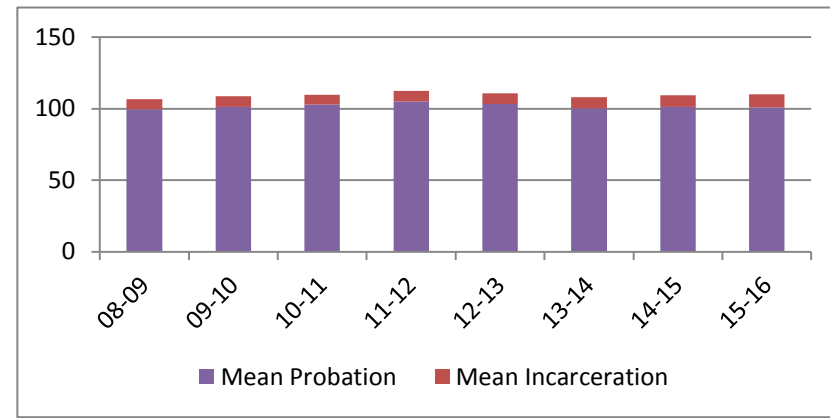
## Average Split Sentence Lengths in Months by Felony Class

Note: Column N indicates the number of felony convictions. Individual offenders can have multiple convictions. Incarceration includes life without parole and death sentences. Probation includes sentences to community corrections.

**Average Sentence Length - Felony Class B - All Offenders**

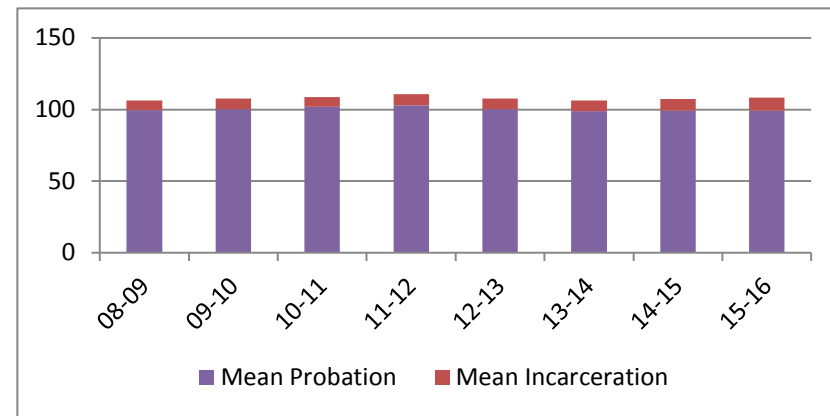
Fiscal Year	Months of Incarceration				Months of Probation			
	Mean	Median	Standard Deviation	N	Mean	Median	Standard Deviation	N
08-09	6.9	6.0	4.4	385	99.6	96.0	16.0	385
09-10	7.4	6.0	4.3	411	101.2	96.0	19.8	411
10-11	7.0	6.0	4.4	553	102.7	96.0	19.7	553
11-12	7.7	8.9	4.3	487	104.8	96.0	23.2	487
12-13	7.7	7.0	4.9	510	103.1	96.0	22.7	510
13-14	7.6	6.7	4.2	415	100.4	96.0	17.7	415
14-15	8.2	9.0	3.9	497	101.3	96.0	19.3	497
15-16	9.0	12.0	3.6	498	101.0	96.0	18.7	498

The table for multiple offenders was not included due to low occurrence frequencies.



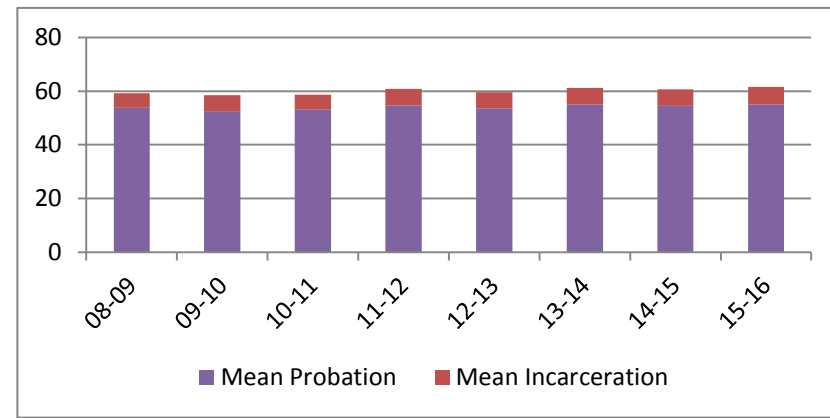
**Average Sentence Length - Felony Class B - Standard Offenders**

Fiscal Year	Months of Incarceration				Months of Probation			
	Mean	Median	Standard Deviation	N	Mean	Median	Standard Deviation	N
08-09	6.9	6.0	4.4	379	99.5	96.0	15.9	379
09-10	7.4	6.0	4.3	400	100.3	96.0	18.9	400
10-11	6.9	6.0	4.4	537	101.7	96.0	18.8	537
11-12	7.6	8.0	4.3	462	103.0	96.0	21.1	462
12-13	7.6	6.2	4.9	487	100.1	96.0	15.1	487
13-14	7.6	6.4	4.1	402	98.7	96.0	14.6	402
14-15	8.2	9.0	3.9	475	99.2	96.0	16.0	475
15-16	8.9	12.0	3.6	475	99.3	96.0	15.0	475



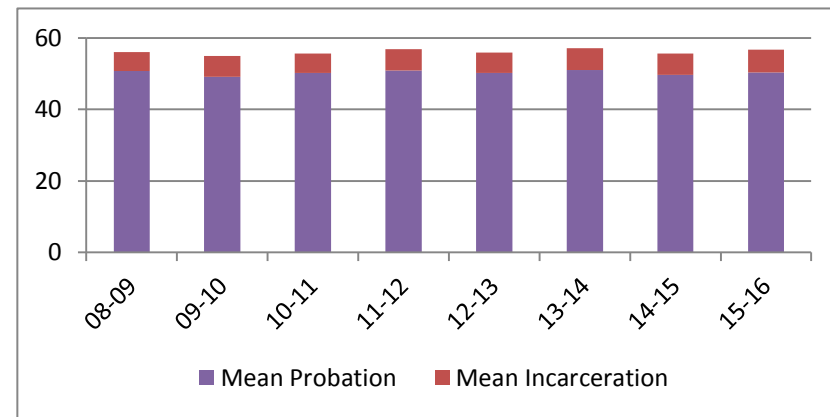
**Average Sentence Length - Class C - All Offenders**

Fiscal Year	Months of Incarceration				Months of Probation			
	Mean	Median	Standard Deviation	N	Mean	Median	Standard Deviation	N
08-09	5.5	4.0	4.2	1,221	53.7	48.0	22.9	1,221
09-10	5.9	5.0	4.3	1,334	52.5	48.0	21.8	1,334
10-11	5.5	4.9	4.2	1,490	53.1	48.0	22.9	1,490
11-12	6.2	5.9	4.2	1,623	54.6	48.0	22.1	1,623
12-13	5.9	4.9	4.1	1,550	53.6	48.0	20.9	1,550
13-14	6.2	5.9	4.1	1,593	55.0	48.0	21.6	1,593
14-15	6.3	5.9	4.1	1,609	54.4	48.0	22.5	1,609
15-16	6.6	6.0	4.1	1,770	55.0	48.0	21.8	1,770



**Average Sentence Length - Class C - Standard Offenders**

Fiscal Year	Months of Incarceration				Months of Probation			
	Mean	Median	Standard Deviation	N	Mean	Median	Standard Deviation	N
08-09	5.3	3.9	4.1	1,127	50.7	48.0	19.8	1,127
09-10	5.8	5.0	4.3	1,227	49.2	48.0	18.0	1,227
10-11	5.4	4.0	4.1	1,385	50.3	48.0	19.7	1,385
11-12	6.0	5.9	4.2	1,485	50.9	48.0	17.8	1,485
12-13	5.8	4.0	4.0	1,421	50.2	48.0	17.0	1,421
13-14	6.0	5.9	4.1	1,427	51.1	48.0	17.7	1,427
14-15	6.0	5.9	4.0	1,421	49.7	48.0	16.4	1,421
15-16	6.3	6.0	4.0	1,577	50.3	48.0	16.6	1,577

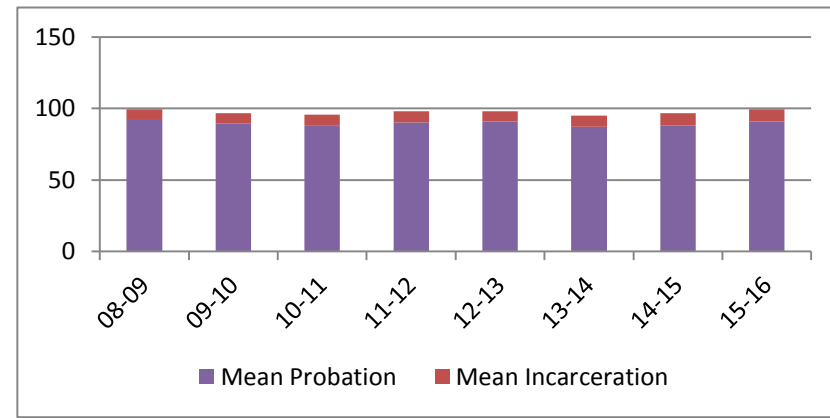


## Average Split Sentence Lengths in Months by Felony Class

Note: Column N indicates the number of felony convictions. Individual offenders can have multiple convictions. Incarceration includes life without parole and death sentences. Probation includes sentences to community corrections.

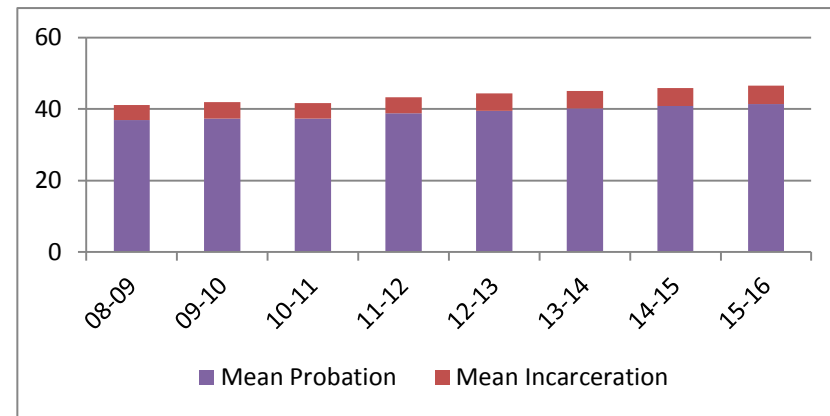
**Average Sentence Length - Class C - Multiple Offenders**

Fiscal Year	Months of Incarceration				Months of Probation			
	Mean	Median	Standard Deviation	N	Mean	Median	Standard Deviation	N
08-09	6.9	6.0	5.2	87	92.7	96.0	23.4	87
09-10	7.2	7.4	4.6	99	89.6	88.1	22.5	99
10-11	7.8	7.9	4.0	89	88.1	84.0	22.7	89
11-12	7.7	9.0	4.3	122	90.3	95.5	19.3	122
12-13	7.2	6.0	4.6	119	91.0	90.0	22.2	119
13-14	8.1	9.0	4.1	155	87.1	84.0	20.7	155
14-15	8.5	12.0	4.1	163	88.3	84.0	23.6	163
15-16	8.8	11.5	3.8	174	90.8	96.0	21.2	174



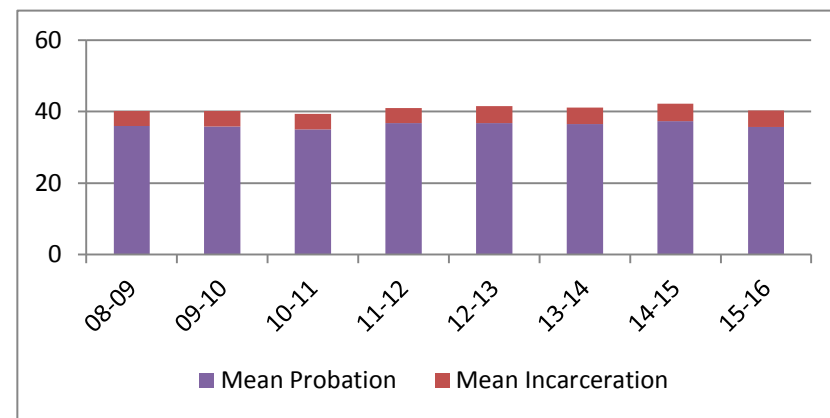
**Average Sentence Length - Class D - All Offenders**

Fiscal Year	Months of Incarceration				Months of Probation			
	Mean	Median	Standard Deviation	N	Mean	Median	Standard Deviation	N
08-09	4.2	3.0	3.5	1,388	36.9	36.0	18.7	1,388
09-10	4.6	3.3	3.7	1,554	37.3	36.0	17.4	1,554
10-11	4.4	3.0	3.7	1,669	37.3	36.0	18.7	1,669
11-12	4.4	3.0	3.6	1,698	38.8	36.0	17.9	1,698
12-13	4.8	3.9	3.8	1,730	39.5	36.0	21.0	1,730
13-14	4.9	3.9	3.8	1,661	40.2	36.0	19.1	1,661
14-15	5.1	3.9	3.8	1,712	40.8	36.0	20.3	1,712
15-16	5.1	4.0	3.8	1,527	41.5	36.0	20.1	1,527



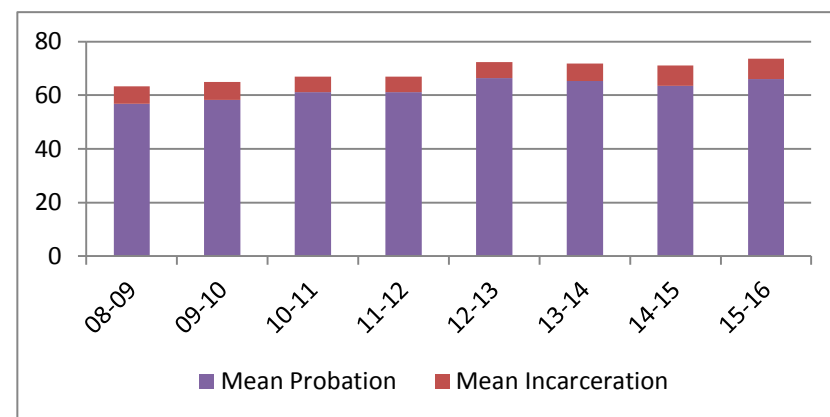
**Average Sentence Length - Class D - Standard Offenders**

Fiscal Year	Months of Incarceration				Months of Probation			
	Mean	Median	Standard Deviation	N	Mean	Median	Standard Deviation	N
08-09	4.2	3.0	3.5	1,344	36.0	36.0	17.8	1,344
09-10	4.5	3.3	3.7	1,474	35.8	36.0	15.2	1,474
10-11	4.3	3.0	3.7	1,560	35.0	35.0	15.6	1,560
11-12	4.3	3.0	3.5	1,573	36.7	36.0	15.5	1,573
12-13	4.7	3.3	3.8	1,603	36.8	36.0	18.0	1,603
13-14	4.7	3.4	3.6	1,481	36.5	36.0	14.6	1,481
14-15	4.8	3.9	3.7	1,521	37.3	36.0	17.1	1,521
15-16	4.6	3.5	3.5	1,283	35.7	36.0	12.6	1,283



**Average Sentence Length - Class D - Multiple Offenders**

Fiscal Year	Months of Incarceration				Months of Probation			
	Mean	Median	Standard Deviation	N	Mean	Median	Standard Deviation	N
08-09	6.5	6.0	4.1	37	56.8	48.0	18.4	37
09-10	6.8	6.0	4.1	68	58.2	56.6	18.4	68
10-11	5.8	5.0	3.7	90	61.1	56.2	19.3	90
11-12	5.8	6.0	4.2	110	61.1	60.0	18.5	110
12-13	6.0	5.0	4.3	102	66.5	70.0	20.0	102
13-14	6.5	6.0	4.1	148	65.4	66.0	18.7	148
14-15	7.5	6.0	4.4	170	63.5	60.0	18.0	170
15-16	7.5	6.0	4.0	196	66.1	60.0	20.4	196

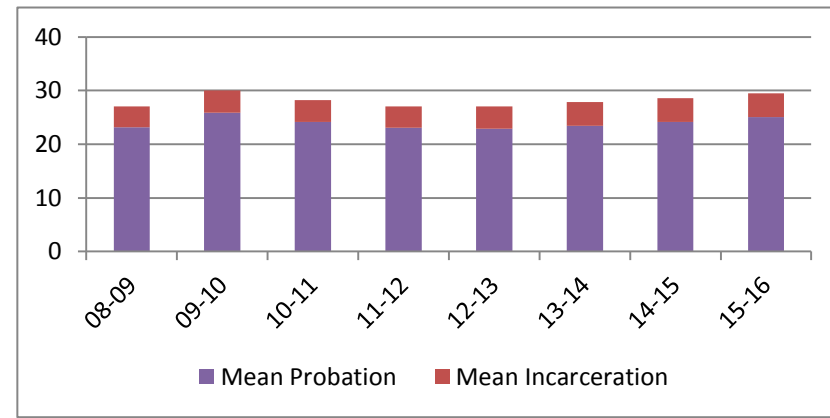


## Average Split Sentence Lengths in Months by Felony Class

Note: Column N indicates the number of felony convictions. Individual offenders can have multiple convictions. Incarceration includes life without parole and death sentences. Probation includes sentences to community corrections.

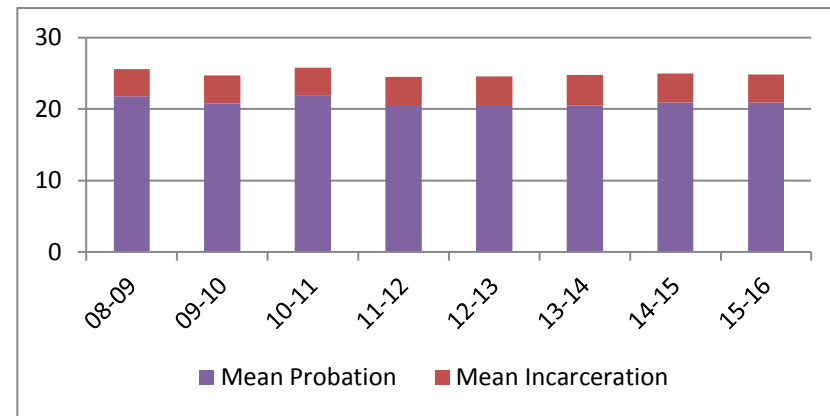
**Average Sentence Length - Class E - All Offenders**

Fiscal Year	Months of Incarceration				Months of Probation			
	Mean	Median	Standard Deviation	N	Mean	Median	Standard Deviation	N
08-09	3.8	3.0	2.9	2,194	23.2	23.0	13.2	2,194
09-10	4.1	3.3	3.2	1,916	25.9	23.0	21.8	1,916
10-11	4.1	3.0	3.1	1,977	24.1	24.0	14.4	1,977
11-12	4.1	3.0	3.2	1,860	23.0	23.0	13.4	1,860
12-13	4.2	3.0	3.2	1,856	22.9	23.0	14.8	1,856
13-14	4.4	3.9	3.2	1,645	23.5	24.0	13.2	1,645
14-15	4.4	3.9	3.4	1,771	24.2	24.0	14.1	1,771
15-16	4.4	3.0	3.4	1,890	25.1	24.0	16.3	1,890



**Average Sentence Length - Class E - Standard Offenders**

Fiscal Year	Months of Incarceration				Months of Probation			
	Mean	Median	Standard Deviation	N	Mean	Median	Standard Deviation	N
08-09	3.8	3.0	2.8	2,005	21.8	22.5	11.8	2,005
09-10	3.9	3.0	3.1	1,673	20.8	21.0	11.6	1,673
10-11	3.9	3.0	3.0	1,726	21.8	22.9	12.5	1,726
11-12	3.9	3.0	3.0	1,619	20.6	21.0	10.7	1,619
12-13	4.0	3.0	3.0	1,654	20.6	21.9	11.1	1,654
13-14	4.2	3.0	3.1	1,413	20.5	23.0	10.1	1,413
14-15	4.1	3.0	3.2	1,487	20.9	23.0	11.2	1,487
15-16	3.9	3.0	3.0	1,563	20.9	23.0	9.6	1,563



**Average Sentence Length - Class E - Multiple Offenders**

Fiscal Year	Months of Incarceration				Months of Probation			
	Mean	Median	Standard Deviation	N	Mean	Median	Standard Deviation	N
08-09	4.5	3.9	3.1	158	34.7	36.0	14.5	158
09-10	5.6	6.0	3.1	204	62.2	48.0	40.1	204
10-11	5.0	4.0	3.6	209	35.3	36.0	12.5	209
11-12	5.0	4.0	3.9	198	35.0	36.0	14.3	198
12-13	5.6	5.0	3.8	146	34.4	36.0	11.7	146
13-14	5.1	4.9	3.4	191	37.1	36.0	12.1	191
14-15	6.0	5.0	3.9	226	36.8	36.0	11.1	226
15-16	6.5	6.0	4.1	253	40.8	36.0	25.4	253

