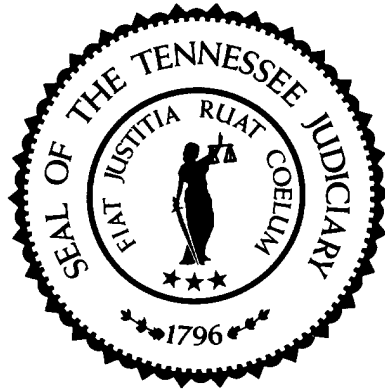


Sentencing Practices in Tennessee



Administrative Office of the Courts

Information for Cases Sentenced
Between July 1, 2012 and June 30, 2020

TDOC Data Extracted: February 2021
Released: March 2021

Sentencing Practices in Tennessee

Table of Contents

Methodology	1
Sentence Type Information	
Class A	3
Class B	3
Class C	4
Class D	4
Class E	4
Average Incarceration Lengths in Months	
Class A	5
Rape of Child	6
Second Degree Murder	6
Especially Aggravated Kidnapping	7
Class B	8
Schedule II Cocaine	9
Aggravated Robbery	10
Aggravated Sexual Battery	11
Class C	12
Aggravated Burglary	13
Aggravated Assault	14
Schedule II Cocaine < ½ Gram	15
Schedule II Drugs: Max \$100,000 Fine	16
Class D	17
Theft: \$1,000 to \$10,000	18
Burglary Other Than Habitation	19
Identity Theft	20
Obtain Drugs by Fraud	21
Class E	22
Forgery: Up to \$1,000	23
Burglary: Auto	24
Theft: \$500 to \$1,000	25
Schedule VI Drugs: Not < ½ Ounce	26
Habitual Traffic Offender	27
Failure to Appear (Felony)	28
Average Probation Lengths in Months	
Class B	29
Class C	30
Class D	31
Class E	32
Average Split Sentence Lengths in Months	
Class B	33
Class C	34
Class D	35
Class E	36

Methodology

The data used in evaluating sentencing practices comes from the Tennessee Department of Correction (TDOC); where individual offense data is captured. Each offense sentence is recorded individually, including cases of multiple offense convictions and eliminating the potential confusion in determining sentence lengths created by these multiple offense convictions. To establish a baseline for comparison purposes, data from multiple years was queried. The initial focus of this analysis consisted of cases where the defendants received incarceration only, either in a TDOC facility or a local jail. That has been expanded to include probation and alternative sentencing information as well. This data is not a sample, but is the entire population of sentences captured by the TDOC during the analyzed time frame.

Sentence lengths are reported for standard offenders, multiple offenders and for all offender types as a group from the body of convicted felons in the State Criminal or Circuit Criminal Courts. Standard and multiple offender defendant types were chosen because they comprise over 90% of all sentences in Tennessee.

Specific offenses are included in analysis first by choosing the top three most frequently occurring offenses in each felony class, then by a combination of occurrence frequency, overall impact on sentence length and by the increasing in frequency of the occurrence of the offense (i.e. the offense is happening in increasing amounts, but was not historically happening in large numbers). The following offenses make nearly 70% of convicted offenses and are included in the statistic table report.

Class A

Rape of a Child

Second Degree Murder

Especially Aggravated Kidnapping

Class B

Schedule II Drugs: Cocaine

Aggravated Robbery

Aggravated Sexual Battery

Class C

Aggravated Burglary

Aggravated Assault

Schedule II Drugs: Cocaine < 1/2 Gram

Schedule II Drugs: Up to \$100,000 Fine

Class D

Theft: \$1,000 to \$10,000

Burglary: Other than Habitation or Auto

Identity Theft

Obtain Drugs by Fraud

Class E

Forgery: Up to \$1,000

Burglary: Auto

Theft: \$500 to \$1,000

Schedule VI Drugs: Not Less than ½ Ounce

Habitual Traffic Offender

Failure to Appear (Felony)

Data for each felony class and defendant type (standard, multiple and all) are presented as well. The tables for the offenses listed and for the felony classes display the mean and median sentence lengths in months, the standard deviation, and the number of convictions for each year reported. This report contains basic incarceration, probation and alternative sentencing information and can be used for the following:

- analyzing trends
- evaluating the effectiveness of legislation aimed at reducing incarceration rates

Given that this data does not include demographic information; it cannot be used to evaluate any scenarios or trends that involve demographic references.

Note 1

The numbers presented here and in previous reports may vary for the same years. Discrepancies are due in part to delayed reporting to the Tennessee Department of Corrections and parole violations over time. Also, due to delayed reporting to TDOC, the total population in recent years may not be included in the analysis at the time of publication.

Note 2

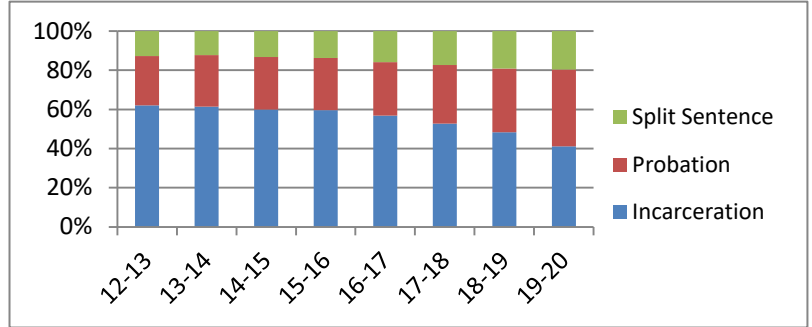
It should be noted that the numbers of filings and dispositions were reduced statewide due to the impacts of the Covid 19 pandemic on the operations of the courts. The end effect of this was a reduction overall in the number of sentences passed during this fiscal year. This can be noted in the N columns of the data grids in the various categories of the report.

Sentence Type Information

Note: Column N Indicates the number of felony convictions. Individual offenders can have multiple convictions. Incarceration includes life without parole and death sentences. Probation includes sentences to community corrections.

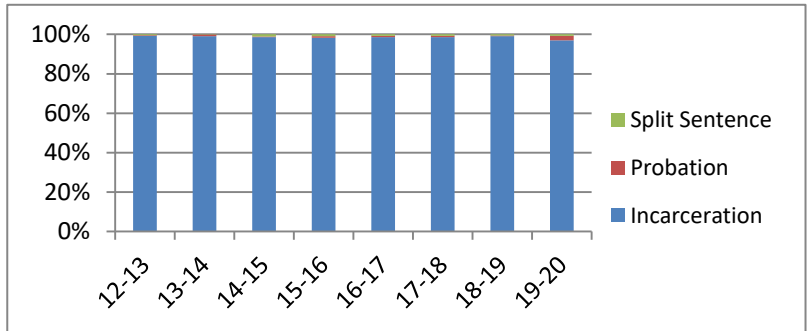
Percent of Sentence Type - All Felony Classes - All Offenders

Fiscal Year	Incarceration	Probation	Split Sentence	N
	Percent	Percent	Percent	
12-13	62.0%	25.2%	12.7%	20,754
13-14	61.3%	26.5%	12.2%	37,941
14-15	59.9%	27.0%	13.2%	34,749
15-16	59.6%	26.7%	13.7%	35,134
16-17	56.8%	27.3%	15.9%	35,199
17-18	52.7%	30.0%	17.3%	33,613
18-19	48.3%	32.4%	19.2%	33,029
19-20	41.2%	39.2%	19.6%	27,185



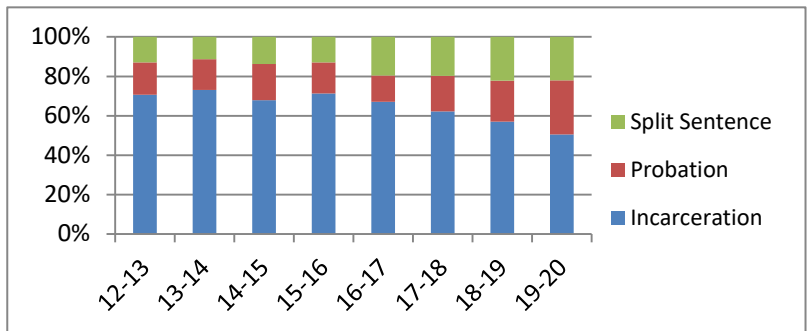
Percent of Sentence Type - Felony Class A - All Offenders

Fiscal Year	Incarceration	Probation	Split Sentence	N
	Percent	Percent	Percent	
12-13	99.3%	0.3%	0.3%	293
13-14	99.1%	0.7%	0.2%	586
14-15	98.5%	0.4%	1.0%	481
15-16	98.4%	0.7%	0.9%	550
16-17	98.5%	0.7%	0.7%	544
17-18	98.6%	0.7%	0.7%	583
18-19	99.0%	0.4%	0.6%	513
19-20	97.1%	2.2%	0.7%	407



Percent of Sentence Type - Felony Class B - All Offenders

Fiscal Year	Incarceration	Probation	Split Sentence	N
	Percent	Percent	Percent	
12-13	70.7%	16.4%	12.8%	1,790
13-14	73.1%	15.6%	11.3%	3,114
14-15	68.0%	18.3%	13.7%	3,028
15-16	71.3%	15.9%	12.9%	3,205
16-17	67.1%	13.4%	19.5%	3,613
17-18	62.1%	18.1%	19.8%	3,813
18-19	57.1%	20.7%	22.2%	4,275
19-20	50.5%	27.5%	22.0%	3,823

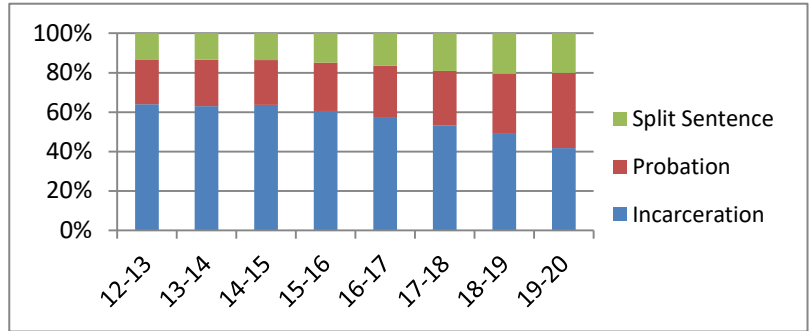


Sentence Type Information

Note: Column N Indicates the number of felony convictions. Individual offenders can have multiple convictions. Incarceration includes life without parole and death sentences. Probation includes sentences to community corrections.

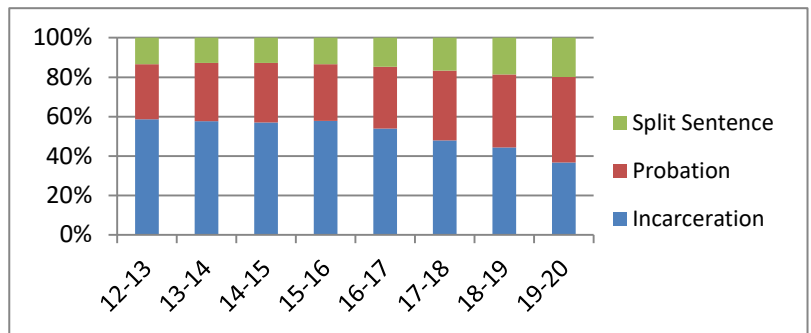
Percent of Sentence Type - Felony Class C - All Offenders

Fiscal Year	Incarceration	Probation	Split Sentence	N
	Percent	Percent	Percent	
12-13	63.9%	22.8%	13.3%	5,210
13-14	63.0%	23.6%	13.4%	10,131
14-15	63.6%	22.8%	13.6%	9,276
15-16	60.5%	24.7%	14.8%	9,755
16-17	57.4%	26.0%	16.6%	10,151
17-18	53.1%	27.8%	19.1%	10,139
18-19	49.3%	30.0%	20.6%	10,213
19-20	41.8%	38.1%	20.2%	8,370



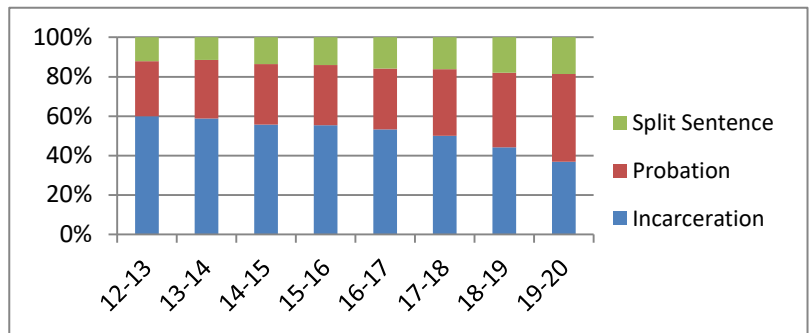
Percent of Sentence Type - Felony Class D - All Offenders

Fiscal Year	Incarceration	Probation	Split Sentence	N
	Percent	Percent	Percent	
12-13	58.6%	27.9%	13.4%	6,383
13-14	57.6%	29.5%	12.8%	11,436
14-15	57.0%	30.2%	12.8%	10,568
15-16	57.8%	28.8%	13.4%	10,032
16-17	53.9%	31.4%	14.7%	9,687
17-18	47.9%	35.4%	16.7%	7,885
18-19	44.3%	37.0%	18.6%	7,514
19-20	36.7%	43.4%	19.9%	6,394



Percent of Sentence Type - Felony Class E - All Offenders

Fiscal Year	Incarceration	Probation	Split Sentence	N
	Percent	Percent	Percent	
12-13	59.9%	27.9%	12.2%	7,078
13-14	58.8%	29.8%	11.5%	12,674
14-15	55.7%	30.8%	13.5%	11,396
15-16	55.3%	30.7%	14.0%	11,592
16-17	53.3%	30.9%	15.8%	11,204
17-18	50.1%	33.8%	16.1%	11,193
18-19	44.2%	37.8%	18.0%	10,514
19-20	36.9%	44.6%	18.6%	8,191

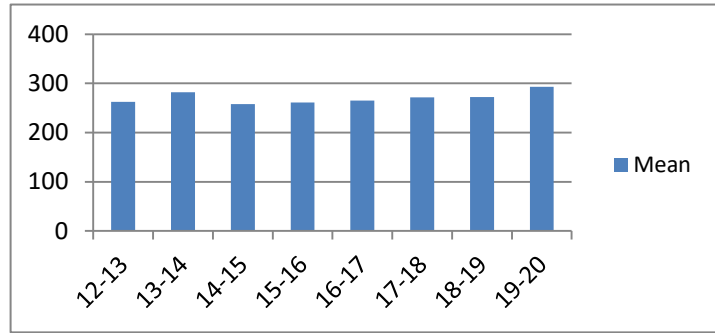


Average Incarceration Lengths in Months by Felony Class and Offense

Note: Column N indicates the number of felony convictions. Individual offenders can have multiple convictions. Incarceration includes life without parole and death sentences. Probation includes sentences to community corrections.

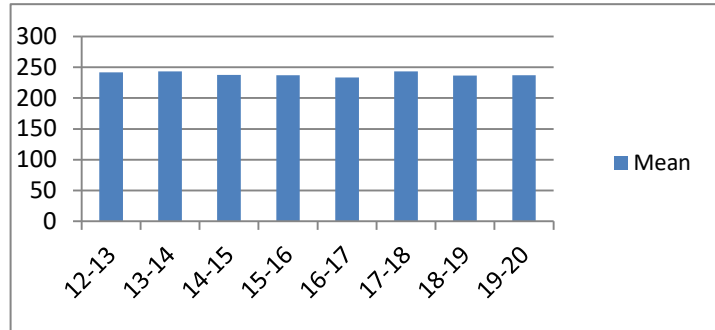
Average Incarceration Length - Class A - All Offenders

Fiscal Year	Mean	Median	Standard Deviation	N
12-13	262.13	246.00	87.99	288
13-14	281.67	252.00	117.84	581
14-15	258.14	240.00	89.43	473
15-16	260.90	240.00	94.19	540
16-17	264.81	240.00	96.81	532
17-18	271.28	264.00	90.57	574
18-19	271.89	240.00	96.75	508
19-20	293.15	264.00	125.38	395



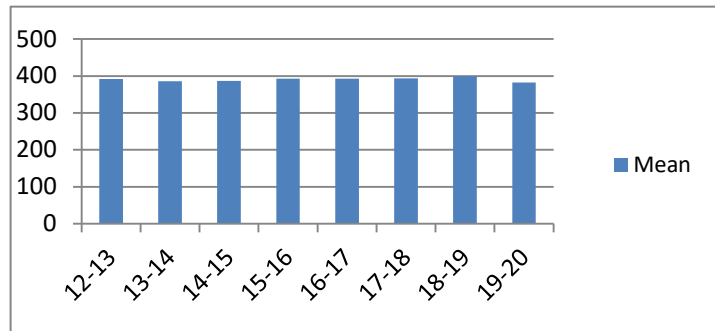
Average Incarceration Length - Class A - Standard Offenders

Fiscal Year	Mean	Median	Standard Deviation	N
12-13	242.05	240.00	56.86	231
13-14	243.32	240.00	49.15	419
14-15	237.48	240.00	53.44	372
15-16	237.11	240.00	53.65	425
16-17	233.75	240.00	52.49	410
17-18	243.43	240.00	48.35	450
18-19	236.86	240.00	51.99	384
19-20	237.26	240.00	54.58	278



Average Incarceration Length - Class A - Multiple Offenders

Fiscal Year	Mean	Median	Standard Deviation	N
12-13	391.58	414.00	96.10	38
13-14	385.76	360.00	84.00	102
14-15	386.86	384.00	104.00	67
15-16	392.92	384.00	79.69	76
16-17	392.56	360.00	54.69	89
17-18	393.84	360.00	57.79	89
18-19	399.50	360.00	54.48	96
19-20	382.48	360.00	56.37	87

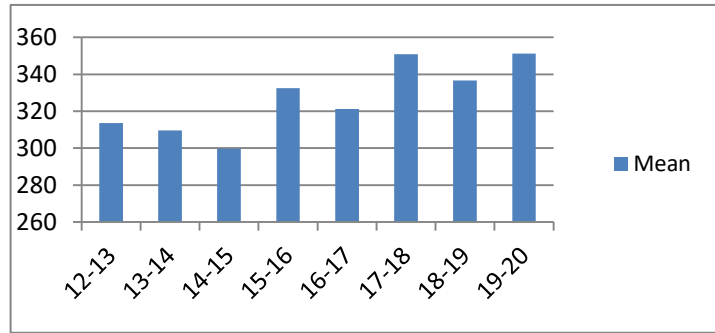


Average Incarceration Lengths in Months by Felony Class and Offense

Note: Column N indicates the number of felony convictions. Individual offenders can have multiple convictions. Incarceration includes life without parole and death sentences. Probation includes sentences to community corrections.

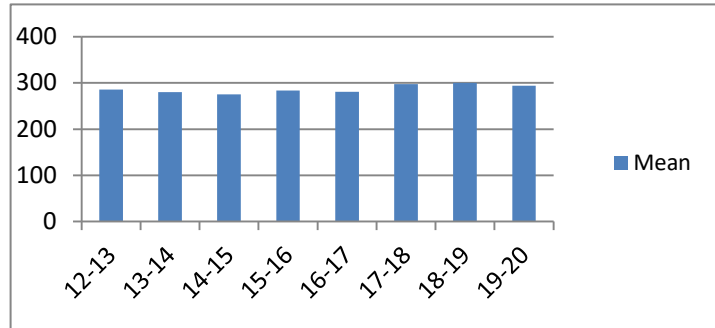
Average Incarceration Length - Rape of a Child - All Offenders

Fiscal Year	Mean	Median	Standard Deviation	N
12-13	313.50	300.00	64.08	56
13-14	309.51	300.00	62.40	111
14-15	299.68	300.00	63.47	75
15-16	332.40	300.00	92.71	70
16-17	321.13	300.00	67.12	117
17-18	350.79	300.00	72.14	99
18-19	336.56	300.00	43.74	85
19-20	351.11	360.00	58.50	81



Average Incarceration Length - Rape of a Child - Standard Offenders

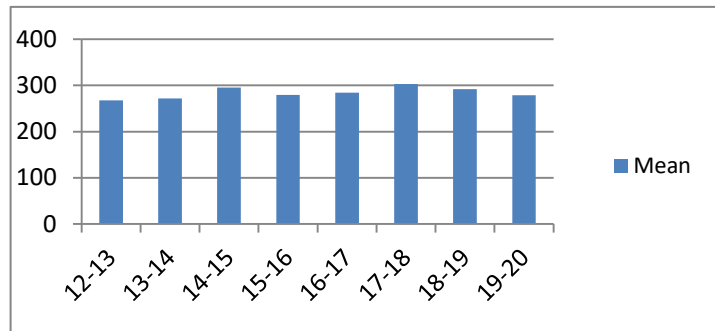
Fiscal Year	Mean	Median	Standard Deviation	N
12-13	286.05	300.00	36.65	43
13-14	280.31	300.00	41.12	78
14-15	275.58	300.00	42.24	57
15-16	283.81	300.00	33.01	43
16-17	280.56	300.00	41.54	71
17-18	297.82	300.00	11.34	55
18-19	300.00	300.00	0.00	43
19-20	293.76	300.00	24.77	25



The table for multiple offenders was not included due to low occurrence frequencies.

Average Incarceration Length - Second Degree Murder - All Offenders

Fiscal Year	Mean	Median	Standard Deviation	N
12-13	267.43	240.00	101.60	42
13-14	271.87	264.00	73.68	93
14-15	295.62	300.00	103.64	78
15-16	279.46	246.00	96.55	112
16-17	284.00	240.00	96.37	105
17-18	302.72	300.00	102.67	97
18-19	291.64	288.00	99.25	127
19-20	278.59	264.00	87.25	88

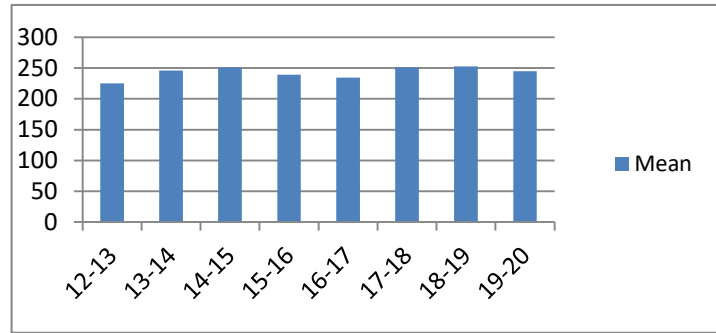


Average Incarceration Lengths in Months by Felony Class and Offense

Note: Column N indicates the number of felony convictions. Individual offenders can have multiple convictions. Incarceration includes life without parole and death sentences. Probation includes sentences to community corrections.

Average Incarceration Length - Second Degree Murder - Standard Offenders

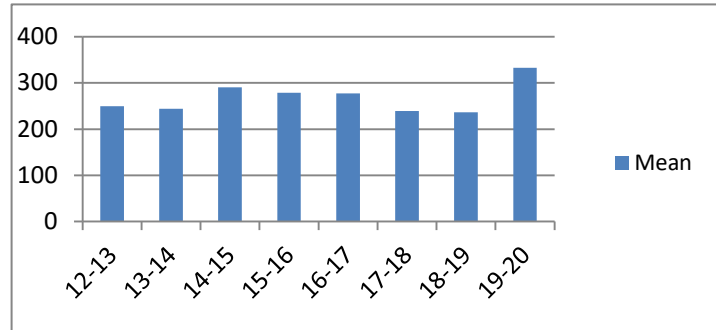
Fiscal Year	Mean	Median	Standard Deviation	N
12-13	225.19	219.00	47.98	32
13-14	246.08	240.00	47.12	73
14-15	251.25	240.00	44.72	48
15-16	239.29	240.00	44.99	80
16-17	234.40	240.00	46.74	75
17-18	250.98	252.00	45.52	59
18-19	252.92	240.00	44.14	98
19-20	244.82	240.00	45.91	66



The table for multiple offenders was not included due to low occurrence frequencies.

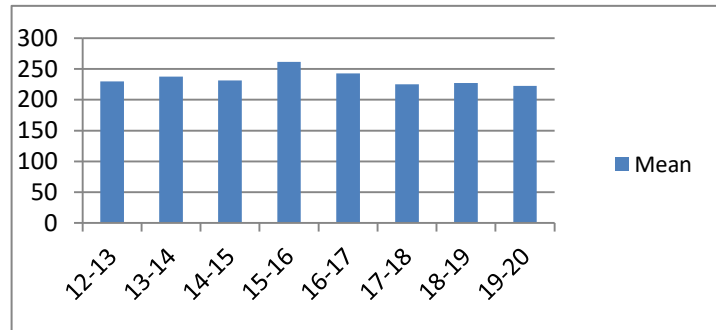
Average Incarceration Length - Especially Aggravated Kidnapping - All Offenders

Fiscal Year	Mean	Median	Standard Deviation	N
12-13	249.43	216.00	88.69	28
13-14	243.86	240.00	88.41	42
14-15	290.57	264.00	117.33	35
15-16	278.78	300.00	100.93	67
16-17	277.69	240.00	135.07	39
17-18	239.27	240.00	61.62	33
18-19	236.48	240.00	64.27	46
19-20	332.89	240.00	204.61	27



Average Incarceration Length - Especially Aggravated Kidnapping - Standard Offenders

Fiscal Year	Mean	Median	Standard Deviation	N
12-13	230.09	216.00	54.59	23
13-14	237.79	240.00	44.19	38
14-15	231.36	240.00	53.28	25
15-16	261.80	300.00	56.78	60
16-17	243.09	240.00	38.76	35
17-18	225.20	210.00	43.06	30
18-19	227.08	240.00	41.70	39
19-20	222.60	216.00	46.96	20



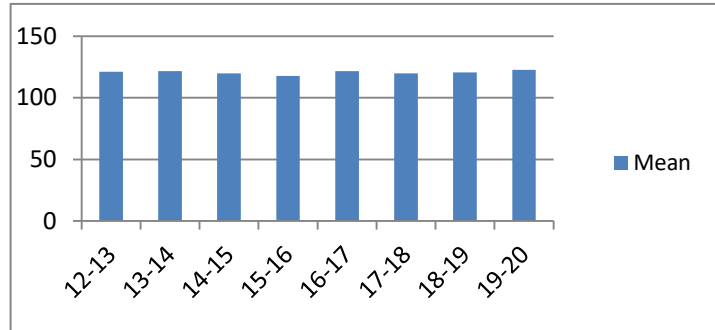
The table for multiple offenders was not included due to low occurrence frequencies.

Average Incarceration Lengths in Months by Felony Class and Offense

Note: Column N indicates the number of felony convictions. Individual offenders can have multiple convictions. Incarceration includes life without parole and death sentences. Probation includes sentences to community corrections.

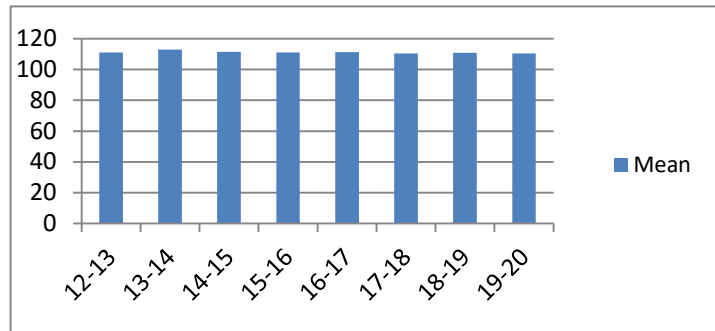
Average Incarceration Length - Felony Class B - All Offenders

Fiscal Year	Mean	Median	Standard Deviation	N
12-13	121.29	108.00	40.57	1,266
13-14	121.79	114.00	39.83	2,275
14-15	119.84	108.00	36.24	2,058
15-16	117.84	108.00	35.89	2,282
16-17	121.67	108.00	38.38	2,424
17-18	119.75	108.00	37.88	2,369
18-19	120.74	108.00	39.68	2,429
19-20	122.65	108.00	43.21	1,932



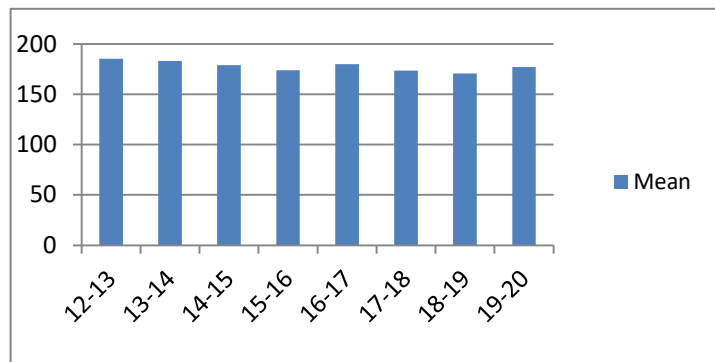
Average Incarceration Length - Felony Class B - Standard Offenders

Fiscal Year	Mean	Median	Standard Deviation	N
12-13	111.07	96.00	18.60	1,081
13-14	112.89	108.00	20.72	1,944
14-15	111.54	108.00	20.13	1,755
15-16	111.13	96.00	18.91	1,920
16-17	111.37	96.00	19.65	2,018
17-18	110.46	96.00	19.47	1,975
18-19	110.94	96.00	22.85	2,003
19-20	110.50	96.00	19.65	1,564



Average Incarceration Length - Felony Class B - Multiple Offenders

Fiscal Year	Mean	Median	Standard Deviation	N
12-13	185.25	180.00	45.13	120
13-14	183.03	180.00	40.35	200
14-15	178.93	180.00	43.33	225
15-16	174.00	180.00	34.29	220
16-17	179.81	180.00	40.46	312
17-18	173.46	168.00	37.71	268
18-19	170.59	162.00	40.00	311
19-20	176.98	180.00	37.73	250

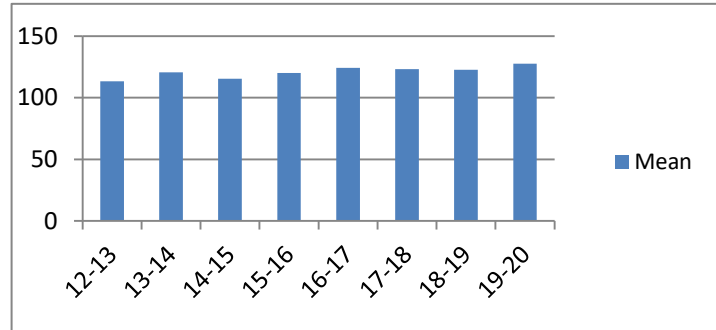


Average Incarceration Lengths in Months by Felony Class and Offense

Note: Column N indicates the number of felony convictions. Individual offenders can have multiple convictions. Incarceration includes life without parole and death sentences. Probation includes sentences to community corrections.

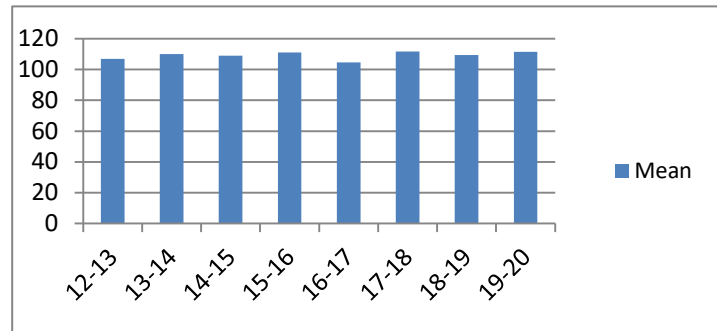
Average Incarceration Length - Schedule II Cocaine - All Offenders

Fiscal Year	Mean	Median	Standard Deviation	N
12-13	113.44	96.00	27.71	253
13-14	120.74	108.00	36.85	386
14-15	115.45	108.00	32.34	333
15-16	120.19	120.00	35.08	211
16-17	124.29	99.00	44.79	192
17-18	123.27	114.00	39.51	207
18-19	122.73	108.00	39.71	214
19-20	127.60	120.00	41.92	120



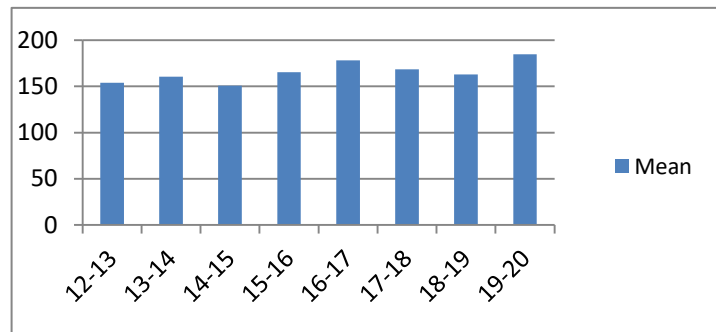
Average Incarceration Length - Schedule II Cocaine - Standard Offenders

Fiscal Year	Mean	Median	Standard Deviation	N
12-13	107.01	96.00	17.06	218
13-14	110.10	96.00	19.49	317
14-15	108.96	96.00	21.04	288
15-16	111.10	108.00	19.09	178
16-17	104.64	96.00	15.25	141
17-18	111.61	108.00	21.75	166
18-19	109.39	96.00	18.36	170
19-20	111.48	96.00	18.52	93



Average Incarceration Length - Schedule II Cocaine - Multiple Offenders

Fiscal Year	Mean	Median	Standard Deviation	N
12-13	153.80	144.00	42.70	30
13-14	160.50	144.00	30.32	56
14-15	150.83	144.00	40.75	36
15-16	165.33	168.00	37.85	27
16-17	178.09	180.00	41.00	44
17-18	168.33	144.00	40.41	36
18-19	163.00	156.00	23.37	36
19-20	184.80	198.00	42.54	20

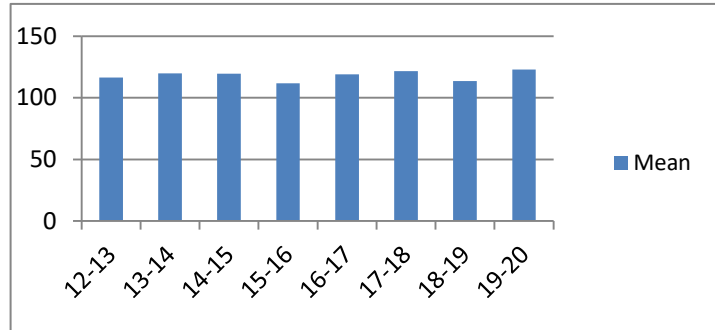


Average Incarceration Lengths in Months by Felony Class and Offense

Note: Column N indicates the number of felony convictions. Individual offenders can have multiple convictions. Incarceration includes life without parole and death sentences. Probation includes sentences to community corrections.

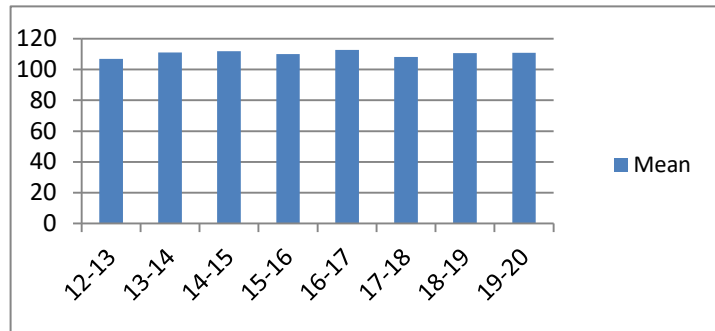
**Average Incarceration Length -
Aggravated Robbery - All Offenders**

Fiscal Year	Mean	Median	Standard Deviation	N
12-13	116.55	96.00	43.36	244
13-14	120.00	96.00	42.92	501
14-15	119.54	108.00	40.21	410
15-16	111.81	96.00	29.70	514
16-17	119.07	108.00	39.56	429
17-18	121.69	96.00	45.41	458
18-19	113.74	96.00	32.69	344
19-20	122.90	96.00	53.94	304



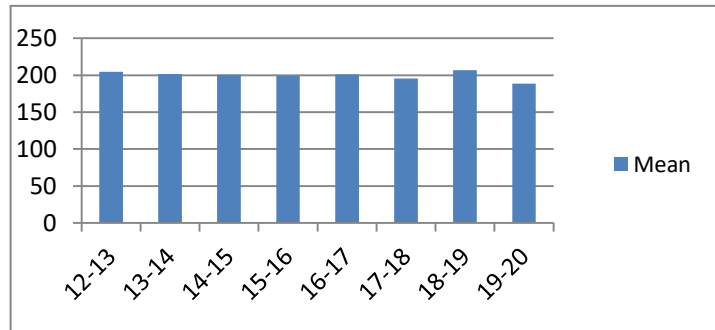
**Average Incarceration Length -
Aggravated Robbery - Standard Offenders**

Fiscal Year	Mean	Median	Standard Deviation	N
12-13	106.96	96.00	16.07	197
13-14	111.16	96.00	18.12	408
14-15	111.87	108.00	18.84	333
15-16	110.13	96.00	19.38	438
16-17	112.67	108.00	19.10	360
17-18	108.24	96.00	17.52	325
18-19	110.56	96.00	22.19	288
19-20	110.87	96.00	17.94	229



**Average Incarceration Length -
Aggravated Robbery - Multiple Offenders**

Fiscal Year	Mean	Median	Standard Deviation	N
12-13	204.71	192.00	28.92	17
13-14	201.63	216.00	36.26	38
14-15	200.73	180.00	29.70	33
15-16	199.00	201.00	22.57	18
16-17	201.11	204.00	34.84	27
17-18	195.29	192.00	24.02	62
18-19	206.53	216.00	26.41	19
19-20	188.33	192.00	20.04	36

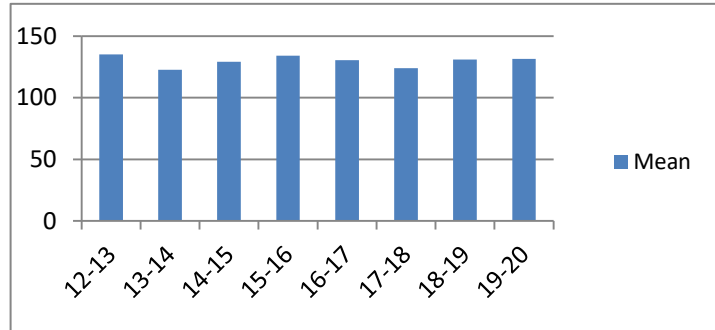


Average Incarceration Lengths in Months by Felony Class and Offense

Note: Column N indicates the number of felony convictions. Individual offenders can have multiple convictions. Incarceration includes life without parole and death sentences. Probation includes sentences to community corrections.

**Average Incarceration Length -
Aggravated Sexual Battery - All Offenders**

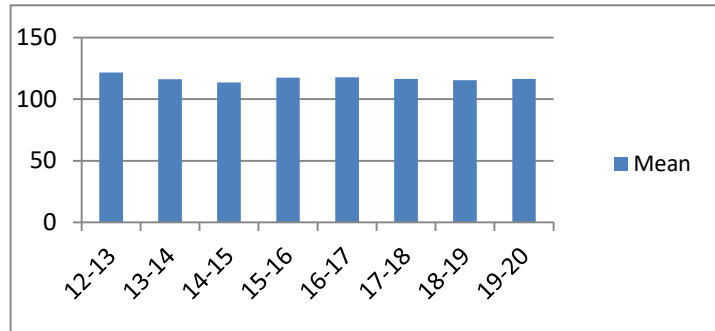
Fiscal Year	Mean	Median	Standard Deviation	N
12-13	135.16	120.00	39.94	126
13-14	122.71	120.00	34.33	183
14-15	129.24	120.00	41.85	168
15-16	134.19	120.00	40.12	139
16-17	130.61	120.00	39.30	247
17-18	123.93	120.00	32.84	217
18-19	131.10	120.00	48.36	217
19-20	131.46	120.00	44.74	142



low occurrence frequencies.

**Average Incarceration Length -
Aggravated Sexual Battery - Standard Offenders**

Fiscal Year	Mean	Median	Standard Deviation	N
12-13	121.71	120.00	18.79	105
13-14	116.32	120.00	18.26	163
14-15	113.61	108.00	16.99	139
15-16	117.60	120.00	18.84	105
16-17	117.77	120.00	19.21	210
17-18	116.40	120.00	18.17	200
18-19	115.50	120.00	18.29	184
19-20	116.54	120.00	19.35	118



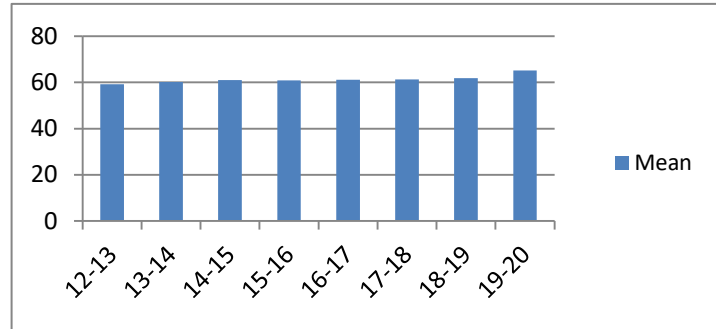
The table for multiple offenders was not included due to low occurrence frequencies.

Average Incarceration Lengths in Months by Felony Class and Offense

Note: Column N indicates the number of felony convictions. Individual offenders can have multiple convictions. Incarceration includes life without parole and death sentences. Probation includes sentences to community corrections.

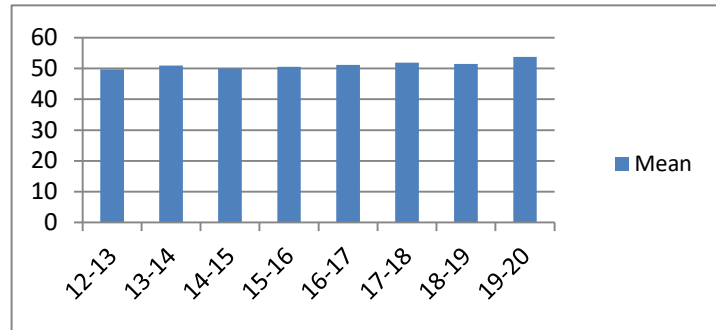
**Average Incarceration Length - Class C -
All Offenders**

Fiscal Year	Mean	Median	Standard Deviation	N
12-13	59.27	48.00	28.63	3,330
13-14	60.16	48.00	27.59	6,382
14-15	61.06	48.00	30.25	5,901
15-16	60.82	48.00	28.28	5,904
16-17	61.13	54.00	28.39	5,831
17-18	61.23	60.00	28.23	5,381
18-19	61.84	60.00	29.03	5,039
19-20	65.16	60.00	31.48	3,498



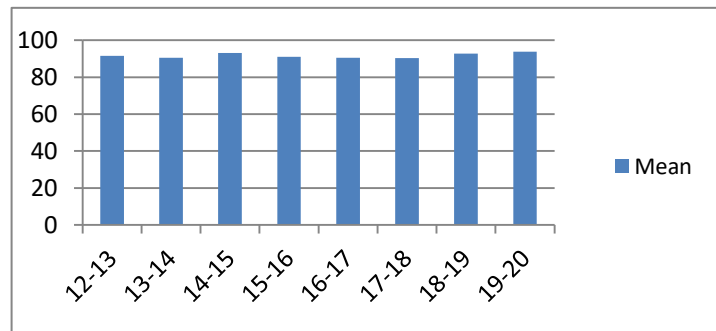
**Average Incarceration Length - Class C -
Standard Offenders**

Fiscal Year	Mean	Median	Standard Deviation	N
12-13	49.77	48.00	15.32	2,718
13-14	50.94	48.00	15.86	5,167
14-15	50.02	48.00	16.48	4,660
15-16	50.59	48.00	16.62	4,659
16-17	51.16	48.00	16.13	4,657
17-18	51.94	48.00	16.67	4,354
18-19	51.45	48.00	17.02	3,959
19-20	53.76	48.00	19.92	2,671



**Average Incarceration Length - Class C -
Multiple Offenders**

Fiscal Year	Mean	Median	Standard Deviation	N
12-13	91.49	96.00	23.01	443
13-14	90.45	96.00	19.91	954
14-15	93.02	96.00	22.16	953
15-16	91.07	96.00	20.94	961
16-17	90.48	96.00	20.10	886
17-18	90.33	96.00	20.22	791
18-19	92.72	96.00	20.83	869
19-20	93.72	96.00	20.61	597

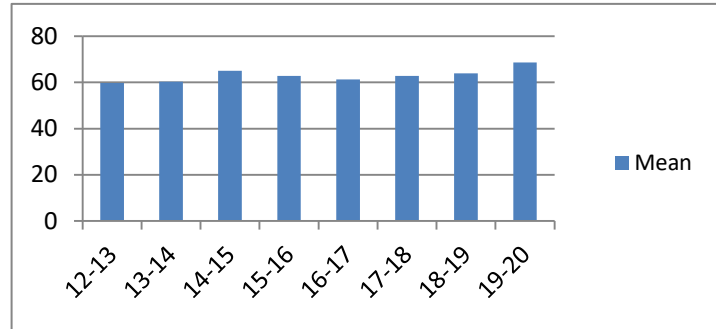


Average Incarceration Lengths in Months by Felony Class and Offense

Note: Column N indicates the number of felony convictions. Individual offenders can have multiple convictions. Incarceration includes life without parole and death sentences. Probation includes sentences to community corrections.

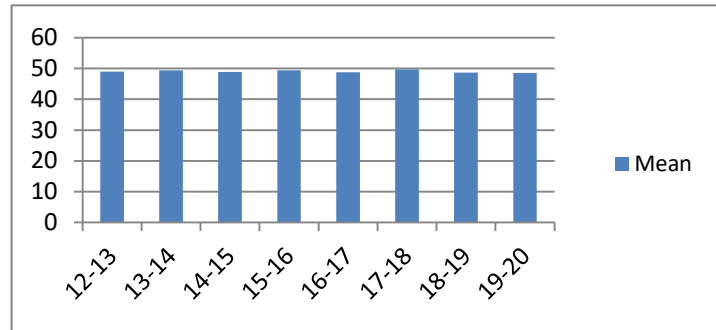
Average Incarceration Length - Aggravated Burglary - All Offenders

Fiscal Year	Mean	Median	Standard Deviation	N
12-13	59.82	48.00	30.88	989
13-14	60.34	48.00	29.11	1,794
14-15	64.98	48.00	33.83	1,665
15-16	62.80	48.00	30.75	1,531
16-17	61.36	48.00	30.40	1,238
17-18	62.79	48.00	32.04	969
18-19	63.87	48.00	32.72	842
19-20	68.66	60.00	37.86	472



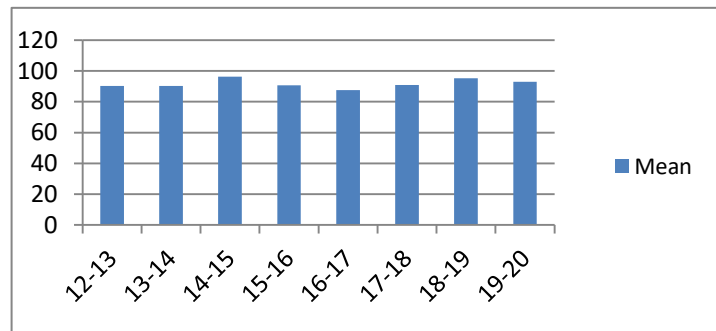
Average Incarceration Length - Aggravated Burglary - Standard Offenders

Fiscal Year	Mean	Median	Standard Deviation	N
12-13	49.01	48.00	14.31	799
13-14	49.42	48.00	14.24	1,414
14-15	48.89	48.00	16.75	1,195
15-16	49.41	48.00	14.18	1,139
16-17	48.78	48.00	14.28	943
17-18	49.75	48.00	15.08	742
18-19	48.64	48.00	14.83	613
19-20	48.55	48.00	15.51	307



Average Incarceration Length - Aggravated Burglary - Multiple Offenders

Fiscal Year	Mean	Median	Standard Deviation	N
12-13	90.23	90.00	23.20	132
13-14	90.25	84.00	19.90	292
14-15	96.29	96.00	22.07	370
15-16	90.61	84.00	22.93	293
16-17	87.52	84.00	18.65	211
17-18	90.84	96.00	19.74	164
18-19	95.36	96.00	20.55	187
19-20	93.08	96.00	19.88	106

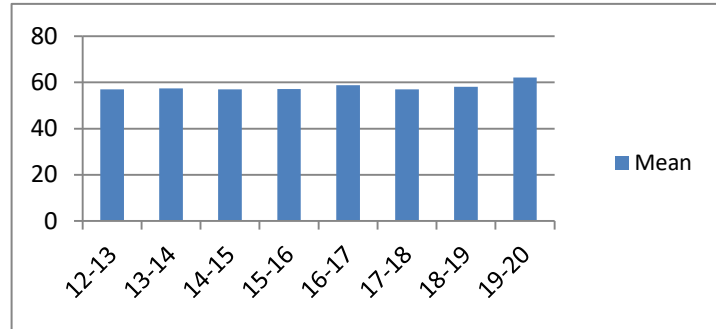


Average Incarceration Lengths in Months by Felony Class and Offense

Note: Column N indicates the number of felony convictions. Individual offenders can have multiple convictions. Incarceration includes life without parole and death sentences. Probation includes sentences to community corrections.

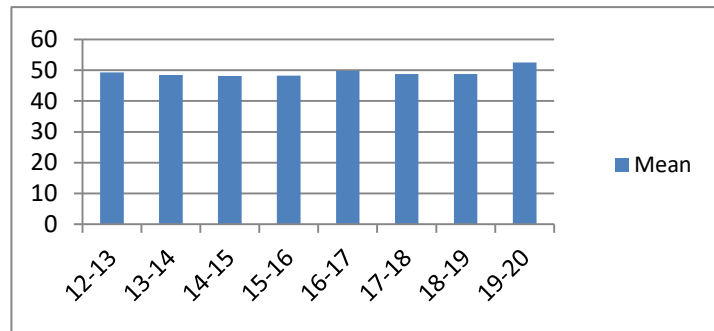
Average Incarceration Length - Aggravated Assault - All Offenders

Fiscal Year	Mean	Median	Standard Deviation	N
12-13	57.01	48.00	25.23	545
13-14	57.45	48.00	26.35	1,032
14-15	57.04	48.00	26.64	1,037
15-16	57.14	48.00	27.53	1,178
16-17	58.74	48.00	26.42	1,158
17-18	57.06	48.00	26.35	1,118
18-19	58.11	48.00	26.32	1,111
19-20	62.08	60.00	29.26	859



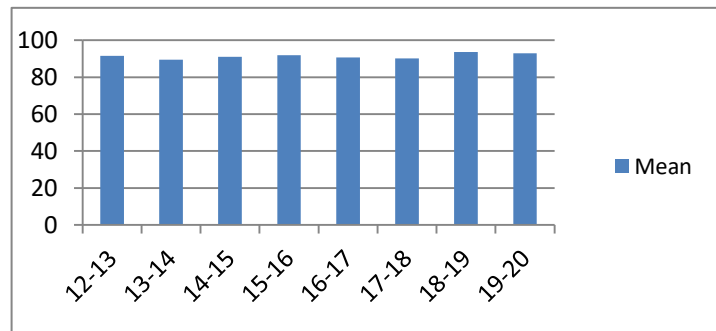
Average Incarceration Length - Aggravated Assault - Standard Offenders

Fiscal Year	Mean	Median	Standard Deviation	N
12-13	49.34	48.00	14.74	461
13-14	48.52	48.00	14.21	840
14-15	48.18	36.03	14.64	856
15-16	48.26	36.00	16.63	968
16-17	49.77	48.00	15.37	945
17-18	48.79	48.00	15.16	930
18-19	48.76	48.00	15.78	887
19-20	52.55	48.00	19.68	682



Average Incarceration Length - Aggravated Assault - Multiple Offenders

Fiscal Year	Mean	Median	Standard Deviation	N
12-13	91.59	96.00	19.88	68
13-14	89.50	84.00	21.00	167
14-15	90.99	96.00	20.83	140
15-16	91.92	84.00	21.60	160
16-17	90.71	96.00	19.60	160
17-18	90.17	84.00	20.75	152
18-19	93.56	96.00	22.97	196
19-20	92.88	96.00	20.51	119

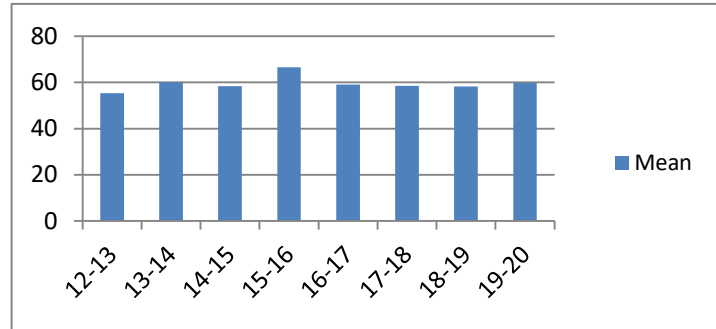


Average Incarceration Lengths in Months by Felony Class and Offense

Note: Column N indicates the number of felony convictions. Individual offenders can have multiple convictions. Incarceration includes life without parole and death sentences. Probation includes sentences to community corrections.

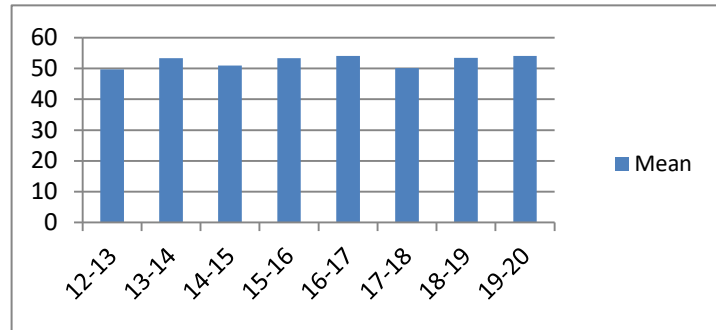
Average Incarceration Length - Schedule II Cocaine < 1/2 Gram - All Offenders

Fiscal Year	Mean	Median	Standard Deviation	N
12-13	55.31	48.00	19.36	162
13-14	60.04	60.00	21.94	331
14-15	58.42	60.00	25.01	270
15-16	66.60	60.00	32.42	202
16-17	59.15	60.00	23.59	162
17-18	58.51	48.00	24.29	119
18-19	58.26	48.00	24.55	103
19-20	59.81	60.00	21.69	63



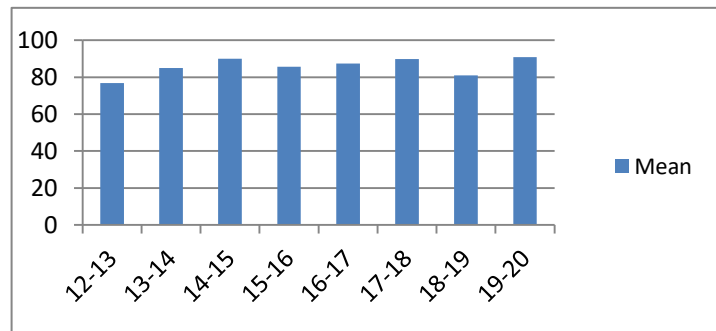
Average Incarceration Length - Schedule II Cocaine < 1/2 Gram - Standard Offenders

Fiscal Year	Mean	Median	Standard Deviation	N
12-13	49.75	48.00	13.85	130
13-14	53.34	48.00	17.07	261
14-15	50.99	48.00	14.79	225
15-16	53.40	48.00	17.09	149
16-17	54.04	48.00	18.17	140
17-18	50.15	48.00	15.19	96
18-19	53.47	48.00	15.90	90
19-20	54.11	48.00	15.75	54



Average Incarceration Length - Schedule II Cocaine < 1/2 Gram - Multiple Offenders

Fiscal Year	Mean	Median	Standard Deviation	N
12-13	76.71	72.00	18.86	28
13-14	84.90	72.00	19.41	67
14-15	90.00	84.00	17.86	29
15-16	85.62	72.00	21.20	37
16-17	87.43	72.00	20.83	21
17-18	89.74	84.00	22.72	19
18-19	81.00	72.00	17.86	8
19-20	90.75	87.00	20.64	8

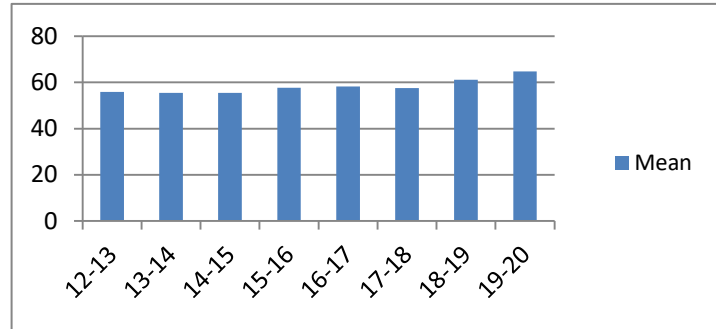


Average Incarceration Lengths in Months by Felony Class and Offense

Note: Column N indicates the number of felony convictions. Individual offenders can have multiple convictions. Incarceration includes life without parole and death sentences. Probation includes sentences to community corrections.

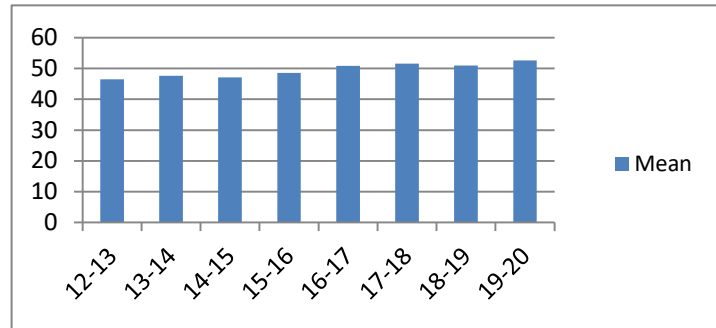
Average Incarceration Length - Schedule II Drugs: Max \$100,000 Fine - All Offenders

Fiscal Year	Mean	Median	Standard Deviation	N
12-13	55.91	48.00	27.43	443
13-14	55.53	48.00	23.63	893
14-15	55.52	48.00	31.55	630
15-16	57.71	48.00	24.75	580
16-17	58.26	48.00	24.82	558
17-18	57.53	48.00	23.07	413
18-19	61.22	54.00	28.31	331
19-20	64.72	72.00	25.96	141



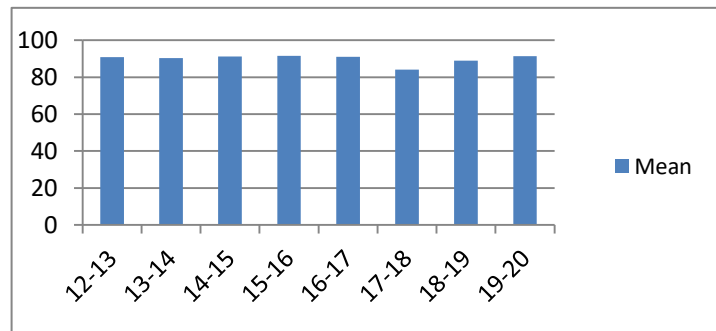
Average Incarceration Length - Schedule II Drugs: Max \$100,000 Fine - Standard Offenders

Fiscal Year	Mean	Median	Standard Deviation	N
12-13	46.50	36.00	14.05	367
13-14	47.63	36.03	14.42	730
14-15	47.08	36.00	15.26	542
15-16	48.59	48.00	13.77	465
16-17	50.88	48.00	15.68	471
17-18	51.62	48.00	16.03	345
18-19	50.97	48.00	16.01	261
19-20	52.57	48.00	15.76	101



Average Incarceration Length - Schedule II Drugs: Max \$100,000 Fine - Multiple Offenders

Fiscal Year	Mean	Median	Standard Deviation	N
12-13	90.87	96.00	20.54	55
13-14	90.32	84.00	19.86	131
14-15	91.23	96.00	21.54	70
15-16	91.49	84.00	21.09	106
16-17	91.00	96.00	22.13	72
17-18	84.00	72.00	25.80	62
18-19	88.97	84.00	19.95	58
19-20	91.33	96.00	14.98	36

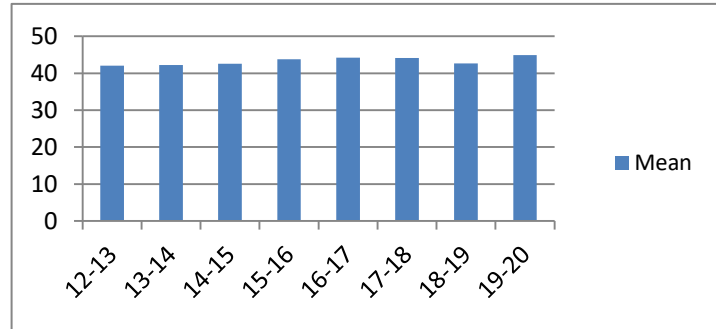


Average Incarceration Lengths in Months by Felony Class and Offense

Note: Column N indicates the number of felony convictions. Individual offenders can have multiple convictions. Incarceration includes life without parole and death sentences. Probation includes sentences to community corrections.

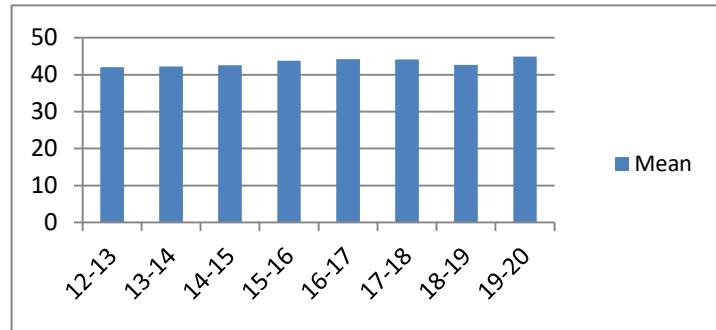
**Average Incarceration Length - Class D -
All Offenders**

Fiscal Year	Mean	Median	Standard Deviation	N
12-13	42.03	36.00	23.59	3,743
13-14	42.20	36.00	23.88	6,591
14-15	42.53	36.00	23.97	6,022
15-16	43.80	36.00	25.33	5,802
16-17	44.19	36.00	24.80	5,222
17-18	44.08	36.00	26.02	3,773
18-19	42.67	36.00	25.22	3,330
19-20	44.91	36.00	27.10	2,346



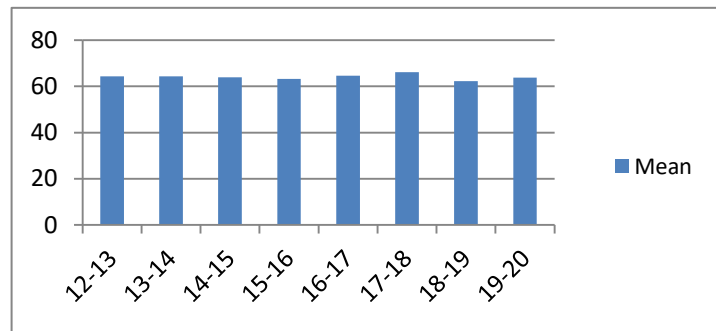
**Average Incarceration Length - Class D -
Standard Offenders**

Fiscal Year	Mean	Median	Standard Deviation	N
12-13	42.03	36.00	23.59	3,743
13-14	42.20	36.00	23.88	6,591
14-15	42.53	36.00	23.97	6,022
15-16	43.80	36.00	25.33	5,802
16-17	44.19	36.00	24.80	5,222
17-18	44.08	36.00	26.02	3,773
18-19	42.67	36.00	25.22	3,330
19-20	44.91	36.00	27.10	2,346



**Average Incarceration Length - Class D -
Multiple Offenders**

Fiscal Year	Mean	Median	Standard Deviation	N
12-13	64.41	60.00	18.54	505
13-14	64.37	60.00	17.80	1,097
14-15	63.91	60.00	18.64	960
15-16	63.21	60.00	18.26	1,103
16-17	64.59	60.00	18.81	886
17-18	66.15	60.00	19.41	651
18-19	62.27	60.00	18.96	580
19-20	63.73	60.00	18.87	405

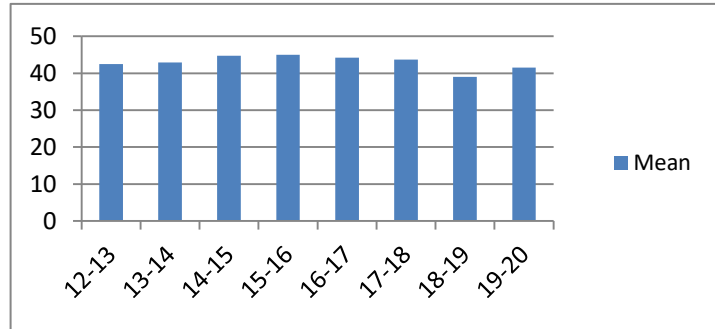


Average Incarceration Lengths in Months by Felony Class and Offense

Note: Column N indicates the number of felony convictions. Individual offenders can have multiple convictions. Incarceration includes life without parole and death sentences. Probation includes sentences to community corrections.

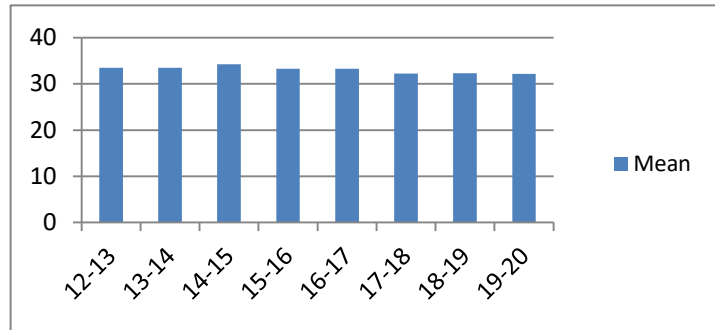
**Average Incarceration Length - Theft:
\$1,000 to \$10,000 - All Offenders**

Fiscal Year	Mean	Median	Standard Deviation	N
12-13	42.46	36.00	24.04	1,238
13-14	42.89	36.00	25.03	2,197
14-15	44.68	36.00	25.71	2,073
15-16	44.99	36.00	26.43	2,043
16-17	44.22	36.00	25.36	1,539
17-18	43.69	36.00	26.54	630
18-19	39.00	36.00	21.04	251
19-20	41.53	36.00	24.40	136



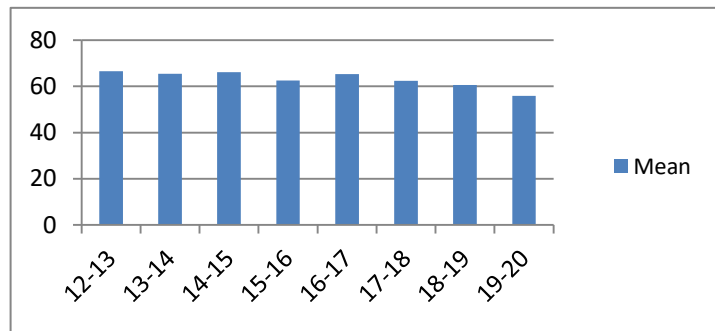
**Average Incarceration Length - Theft:
\$1,000 to \$10,000 - Standard Offenders**

Fiscal Year	Mean	Median	Standard Deviation	N
12-13	33.48	36.00	10.57	985
13-14	33.48	36.00	10.19	1,727
14-15	34.27	36.00	11.19	1,573
15-16	33.32	36.00	10.09	1,458
16-17	33.31	36.00	10.49	1,144
17-18	32.27	24.00	11.20	461
18-19	32.31	24.00	11.29	202
19-20	32.18	24.03	10.48	100



**Average Incarceration Length - Theft:
\$1,000 to \$10,000 - Multiple Offenders**

Fiscal Year	Mean	Median	Standard Deviation	N
12-13	66.61	66.00	20.46	185
13-14	65.41	60.00	19.10	360
14-15	66.12	60.00	19.60	375
15-16	62.59	60.00	19.13	458
16-17	65.29	60.00	19.31	304
17-18	62.38	48.00	20.99	121
18-19	60.59	48.00	17.79	41
19-20	55.93	48.00	18.19	28

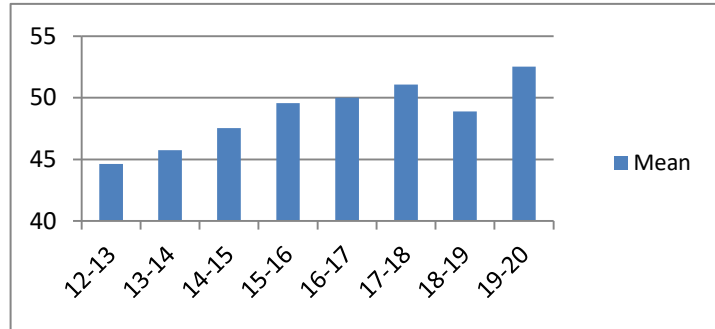


Average Incarceration Lengths in Months by Felony Class and Offense

Note: Column N indicates the number of felony convictions. Individual offenders can have multiple convictions. Incarceration includes life without parole and death sentences. Probation includes sentences to community corrections.

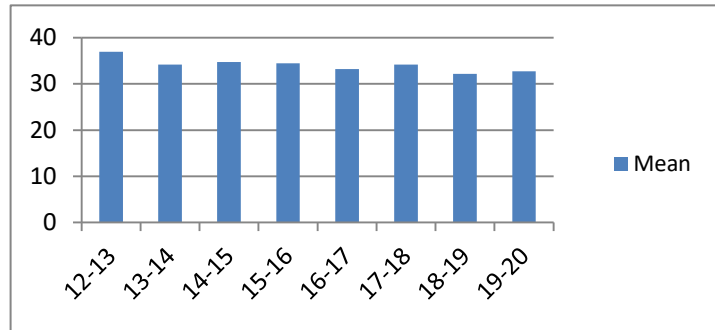
**Average Incarceration Length - Burglary
Other Than Habitation - All Offenders**

Fiscal Year	Mean	Median	Standard Deviation	N
12-13	44.63	48.00	22.31	544
13-14	45.76	36.00	25.60	910
14-15	47.53	48.00	28.35	804
15-16	49.58	48.00	29.19	749
16-17	50.01	36.00	31.38	730
17-18	51.08	48.00	31.15	689
18-19	48.90	48.00	31.14	659
19-20	52.53	48.00	31.96	460



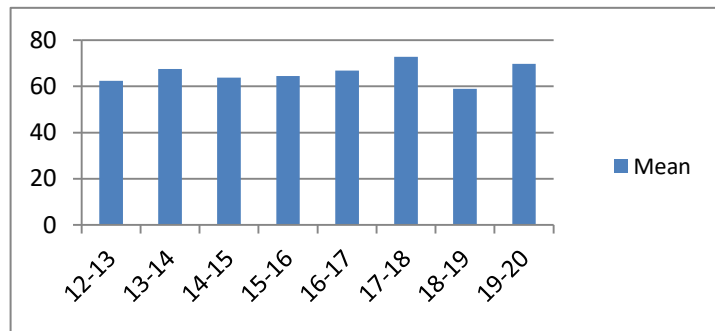
**Average Incarceration Length - Burglary
Other Than Habitation - Standard Offenders**

Fiscal Year	Mean	Median	Standard Deviation	N
12-13	36.95	36.00	10.86	434
13-14	34.21	36.00	10.63	672
14-15	34.74	36.00	11.15	580
15-16	34.44	36.00	10.71	494
16-17	33.18	36.00	10.57	484
17-18	34.21	36.00	10.66	461
18-19	32.17	24.03	9.82	412
19-20	32.73	24.00	11.51	278



**Average Incarceration Length - Burglary
Other Than Habitation - Multiple Offenders**

Fiscal Year	Mean	Median	Standard Deviation	N
12-13	62.37	60.00	15.18	76
13-14	67.53	72.00	17.02	184
14-15	63.86	60.00	17.13	145
15-16	64.51	60.00	17.73	189
16-17	66.91	60.00	19.12	172
17-18	72.83	72.00	20.17	159
18-19	59.01	48.00	16.47	171
19-20	69.75	72.00	18.93	126

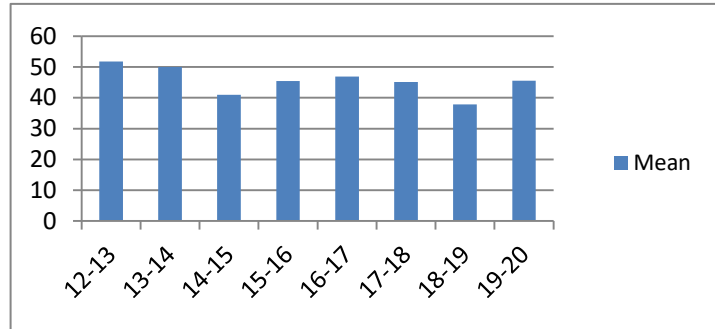


Average Incarceration Lengths in Months by Felony Class and Offense

Note: Column N indicates the number of felony convictions. Individual offenders can have multiple convictions. Incarceration includes life without parole and death sentences. Probation includes sentences to community corrections.

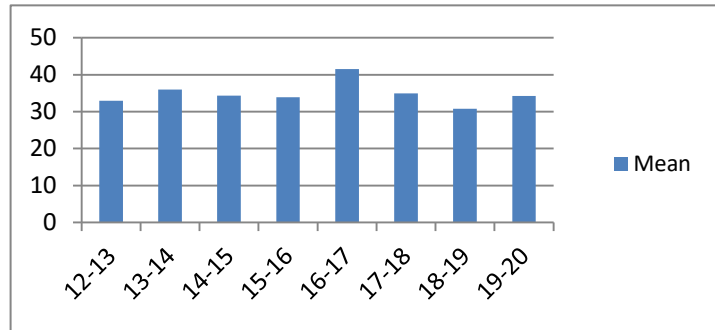
Average Incarceration Length - Identity Theft - All Offenders

Fiscal Year	Mean	Median	Standard Deviation	N
12-13	51.80	36.00	34.21	264
13-14	50.04	48.00	28.79	381
14-15	41.00	36.00	19.21	425
15-16	45.43	36.00	24.08	412
16-17	46.95	48.00	19.22	681
17-18	45.15	48.00	26.82	270
18-19	37.92	24.03	21.95	269
19-20	45.57	36.00	27.61	133



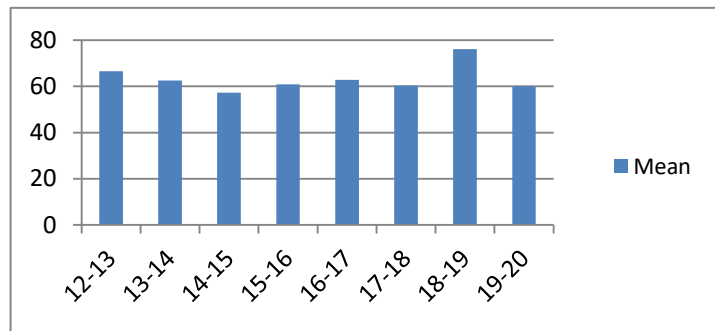
Average Incarceration Length - Identity Theft - Standard Offenders

Fiscal Year	Mean	Median	Standard Deviation	N
12-13	32.90	24.03	10.18	182
13-14	35.95	36.00	10.15	256
14-15	34.31	36.00	9.67	333
15-16	33.87	36.00	9.70	287
16-17	41.52	48.00	9.78	564
17-18	34.94	36.00	10.65	204
18-19	30.77	24.00	9.05	232
19-20	34.28	36.00	13.15	97



Average Incarceration Length - Identity Theft - Multiple Offenders

Fiscal Year	Mean	Median	Standard Deviation	N
12-13	66.59	72.00	16.53	41
13-14	62.48	48.00	16.62	92
14-15	57.32	48.00	17.59	76
15-16	60.92	60.00	13.77	91
16-17	62.88	60.00	17.90	96
17-18	60.38	54.00	13.73	47
18-19	76.13	78.00	20.81	32
19-20	60.00	48.00	18.97	25

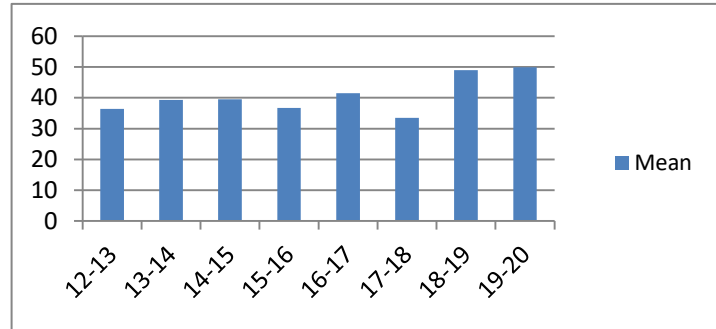


Average Incarceration Lengths in Months by Felony Class and Offense

Note: Column N indicates the number of felony convictions. Individual offenders can have multiple convictions. Incarceration includes life without parole and death sentences. Probation includes sentences to community corrections.

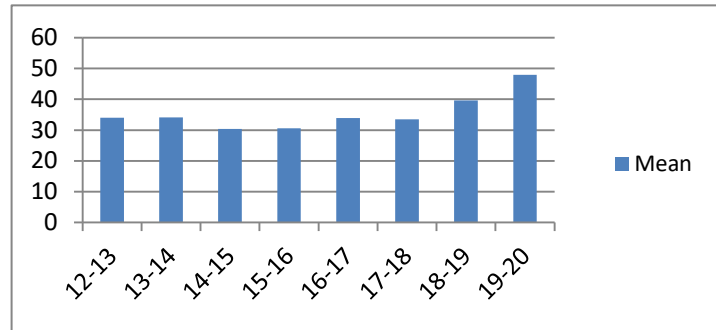
**Average Incarceration Length -
Obtain Drugs by Fraud - All Offenders**

Fiscal Year	Mean	Median	Standard Deviation	N
12-13	36.43	36.00	16.09	100
13-14	39.35	36.00	18.11	145
14-15	39.55	36.00	22.28	132
15-16	36.72	36.00	18.35	185
16-17	41.55	36.00	23.11	40
17-18	33.52	36.00	10.33	29
18-19	49.00	48.00	23.70	12
19-20	49.92	48.00	11.97	50



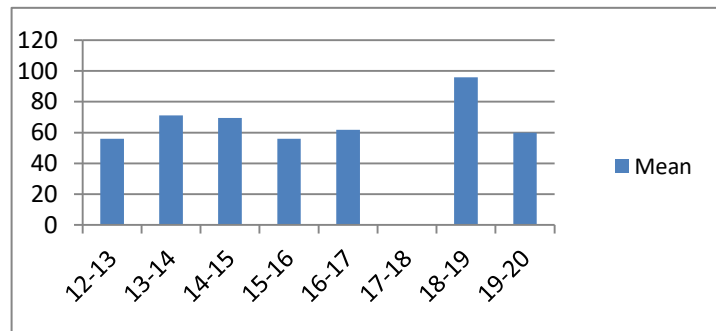
**Average Incarceration Length -
Obtain Drugs by Fraud - Standard Offenders**

Fiscal Year	Mean	Median	Standard Deviation	N
12-13	34.01	30.00	10.65	93
13-14	34.16	36.00	10.16	127
14-15	30.40	24.00	8.61	107
15-16	30.58	24.03	7.49	157
16-17	33.94	36.00	8.70	32
17-18	33.52	36.00	10.33	29
18-19	39.60	42.00	9.88	10
19-20	48.00	48.00	0.00	48



**Average Incarceration Length -
Obtain Drugs by Fraud - Multiple Offenders**

Fiscal Year	Mean	Median	Standard Deviation	N
12-13	56.00	48.00	12.39	6
13-14	71.25	72.00	13.48	16
14-15	69.47	72.00	11.01	19
15-16	56.00	48.00	14.10	15
16-17	61.71	48.00	23.42	7
17-18	.	.	.	0
18-19	96.00	96.00	0.00	2
19-20	60.00	60.00	.	1

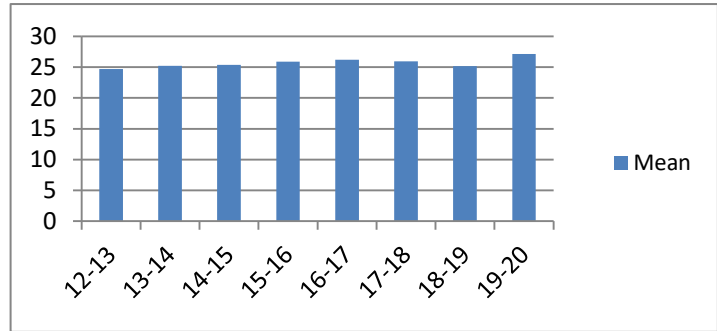


Average Incarceration Lengths in Months by Felony Class and Offense

Note: Column N indicates the number of felony convictions. Individual offenders can have multiple convictions. Incarceration includes life without parole and death sentences. Probation includes sentences to community corrections.

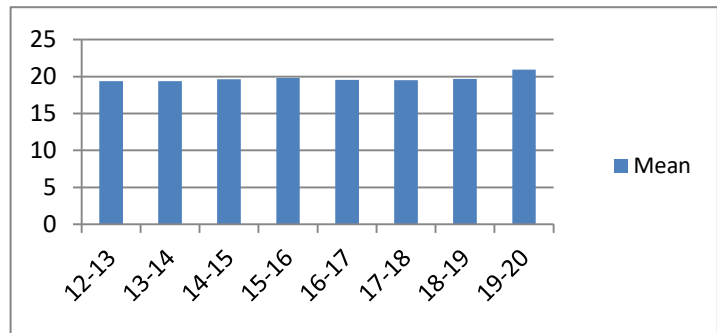
Average Incarceration Length - Class E - All Offenders

Fiscal Year	Mean	Median	Standard Deviation	N
12-13	24.70	24.00	14.05	4,242
13-14	25.21	24.00	15.03	7,447
14-15	25.39	24.00	13.91	6,347
15-16	25.92	24.00	13.91	6,411
16-17	26.21	24.00	14.54	5,972
17-18	25.95	24.00	14.53	5,607
18-19	25.18	24.00	13.72	4,649
19-20	27.16	24.00	15.08	3,019



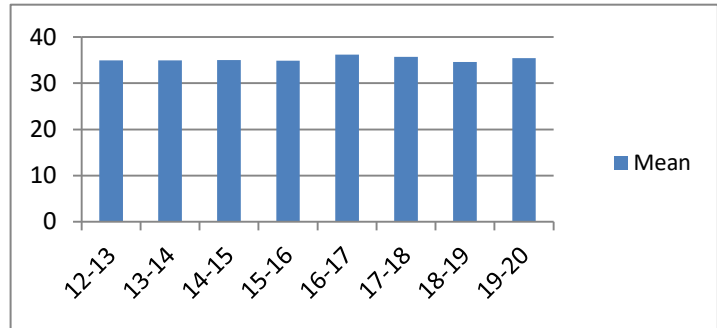
Average Incarceration Length - Class E - Standard Offenders

Fiscal Year	Mean	Median	Standard Deviation	N
12-13	19.39	24.00	6.51	3,293
13-14	19.36	24.00	6.85	5,564
14-15	19.65	24.00	6.94	4,653
15-16	19.79	24.00	6.34	4,511
16-17	19.53	24.00	6.26	4,258
17-18	19.49	24.00	6.28	4,072
18-19	19.69	24.00	6.44	3,466
19-20	20.91	24.00	7.97	2,177



Average Incarceration Length - Class E - Multiple Offenders

Fiscal Year	Mean	Median	Standard Deviation	N
12-13	34.94	36.00	10.64	609
13-14	34.96	36.00	10.59	1,388
14-15	34.98	36.00	10.54	1,276
15-16	34.86	36.00	11.17	1,468
16-17	36.21	36.00	11.07	1,226
17-18	35.74	36.00	10.22	1,094
18-19	34.58	36.00	10.73	883
19-20	35.44	36.00	10.30	604

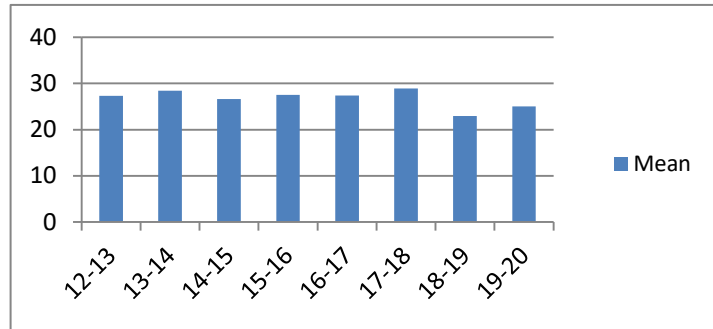


Average Incarceration Lengths in Months by Felony Class and Offense

Note: Column N indicates the number of felony convictions. Individual offenders can have multiple convictions. Incarceration includes life without parole and death sentences. Probation includes sentences to community corrections.

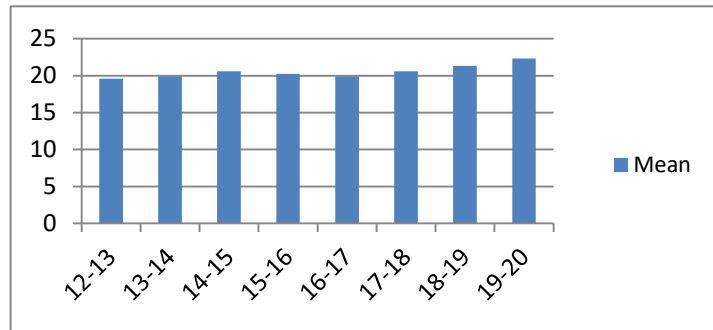
**Average Incarceration Length -
Forgery: Up to \$1,000 - All Offenders**

Fiscal Year	Mean	Median	Standard Deviation	N
12-13	27.32	24.00	17.64	784
13-14	28.44	24.00	22.13	927
14-15	26.63	24.00	13.61	655
15-16	27.50	24.00	14.53	625
16-17	27.38	24.00	14.82	689
17-18	28.90	24.00	16.68	349
18-19	22.92	24.00	7.27	209
19-20	25.07	24.00	9.50	183



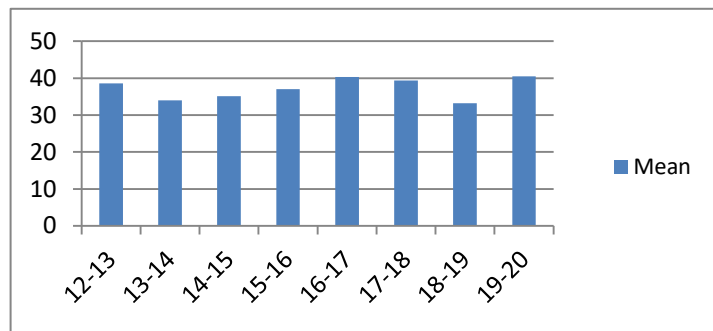
**Average Incarceration Length -
Forgery: Up to \$1,000 - Standard Offenders**

Fiscal Year	Mean	Median	Standard Deviation	N
12-13	19.57	24.00	6.22	616
13-14	19.90	24.00	7.37	685
14-15	20.59	24.00	5.59	471
15-16	20.23	24.00	5.98	437
16-17	19.89	24.00	5.91	488
17-18	20.57	24.00	6.20	250
18-19	21.31	24.00	4.96	182
19-20	22.30	24.00	5.80	161



**Average Incarceration Length -
Forgery: Up to \$1,000 - Multiple Offenders**

Fiscal Year	Mean	Median	Standard Deviation	N
12-13	38.61	48.00	10.71	46
13-14	33.95	36.00	9.92	138
14-15	35.12	36.00	10.60	132
15-16	36.98	36.00	9.21	129
16-17	40.29	36.00	11.68	133
17-18	39.32	36.00	8.08	65
18-19	33.23	30.02	10.35	26
19-20	40.50	42.00	8.93	8

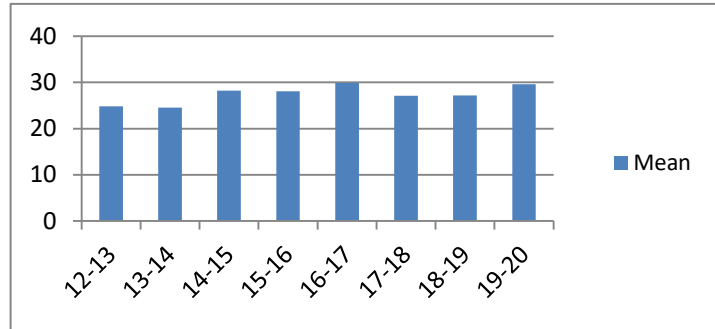


Average Incarceration Lengths in Months by Felony Class and Offense

Note: Column N indicates the number of felony convictions. Individual offenders can have multiple convictions. Incarceration includes life without parole and death sentences. Probation includes sentences to community corrections.

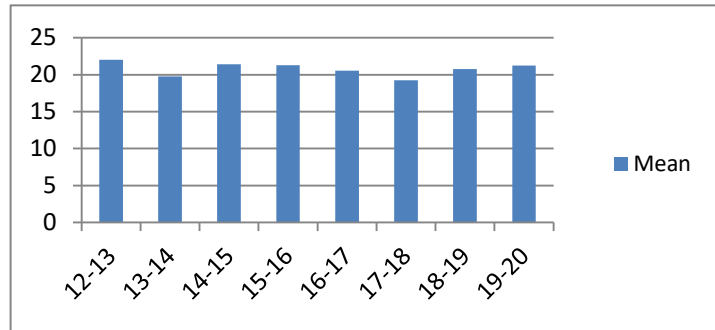
**Average Incarceration Length - Burglary:
Auto - All Offenders**

Fiscal Year	Mean	Median	Standard Deviation	N
12-13	24.80	24.00	9.71	550
13-14	24.54	24.00	13.15	1,127
14-15	28.24	24.00	15.84	950
15-16	28.09	24.00	13.96	963
16-17	29.91	24.00	17.51	731
17-18	27.13	24.00	16.64	848
18-19	27.22	24.00	15.08	643
19-20	29.61	24.00	16.56	431



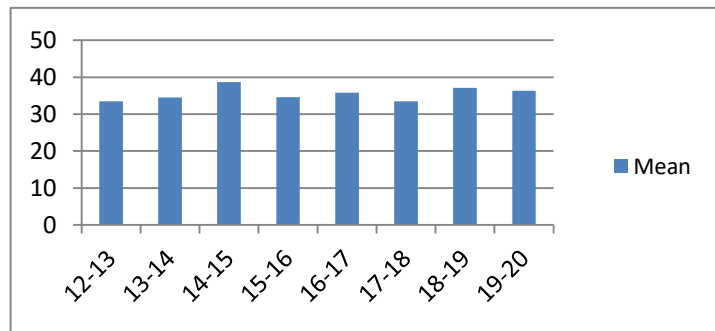
**Average Incarceration Length - Burglary:
Auto - Standard Offenders**

Fiscal Year	Mean	Median	Standard Deviation	N
12-13	22.00	24.00	5.20	454
13-14	19.77	24.00	6.09	887
14-15	21.40	24.00	8.70	692
15-16	21.27	24.00	5.46	603
16-17	20.54	24.00	6.02	477
17-18	19.25	24.00	5.88	601
18-19	20.78	24.00	7.34	467
19-20	21.23	24.00	5.01	295



**Average Incarceration Length - Burglary:
Auto - Multiple Offenders**

Fiscal Year	Mean	Median	Standard Deviation	N
12-13	33.43	30.00	10.38	77
13-14	34.51	36.00	10.14	175
14-15	38.68	42.00	10.20	172
15-16	34.56	36.00	12.54	296
16-17	35.81	36.00	10.76	149
17-18	33.49	36.00	10.34	136
18-19	37.06	36.00	10.88	127
19-20	36.35	36.00	10.11	85

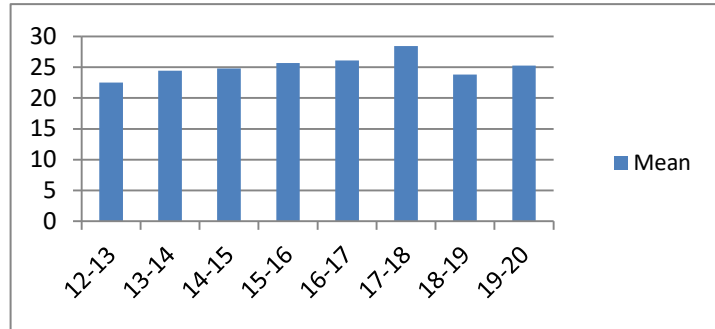


Average Incarceration Lengths in Months by Felony Class and Offense

Note: Column N indicates the number of felony convictions. Individual offenders can have multiple convictions. Incarceration includes life without parole and death sentences. Probation includes sentences to community corrections.

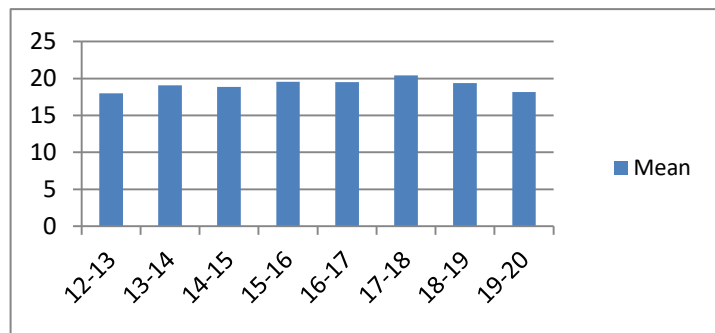
**Average Incarceration Length -
Theft: \$500 - \$1,000 - All Offenders**

Fiscal Year	Mean	Median	Standard Deviation	N
12-13	22.52	24.00	12.87	540
13-14	24.43	24.00	13.54	1,060
14-15	24.81	24.00	14.39	931
15-16	25.68	24.00	14.16	925
16-17	26.12	24.00	14.37	811
17-18	28.45	24.00	15.32	355
18-19	23.80	24.00	13.05	182
19-20	25.27	24.00	16.65	90



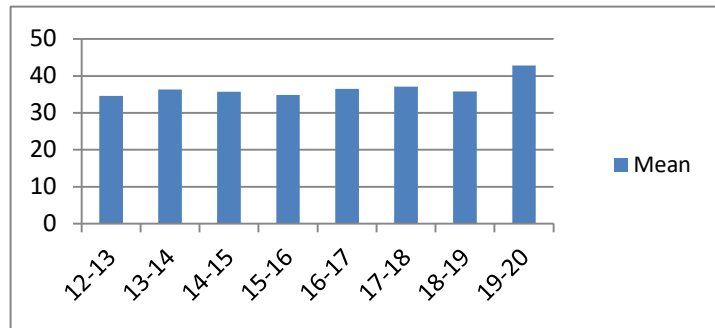
**Average Incarceration Length -
Theft: \$500 - \$1,000 - Standard Offenders**

Fiscal Year	Mean	Median	Standard Deviation	N
12-13	17.98	18.00	6.25	437
13-14	19.07	24.00	6.14	821
14-15	18.85	24.00	6.18	701
15-16	19.54	24.00	6.08	663
16-17	19.51	24.00	6.16	587
17-18	20.41	24.00	7.29	230
18-19	19.38	24.00	6.28	147
19-20	18.16	24.00	6.00	73



**Average Incarceration Length -
Theft: \$500 - \$1,000 - Multiple Offenders**

Fiscal Year	Mean	Median	Standard Deviation	N
12-13	34.62	36.00	10.08	73
13-14	36.33	36.00	10.23	179
14-15	35.68	36.00	10.67	164
15-16	34.87	33.00	12.21	198
16-17	36.53	36.00	10.39	161
17-18	37.09	36.00	10.88	94
18-19	35.79	36.00	11.60	28
19-20	42.86	48.00	6.41	7

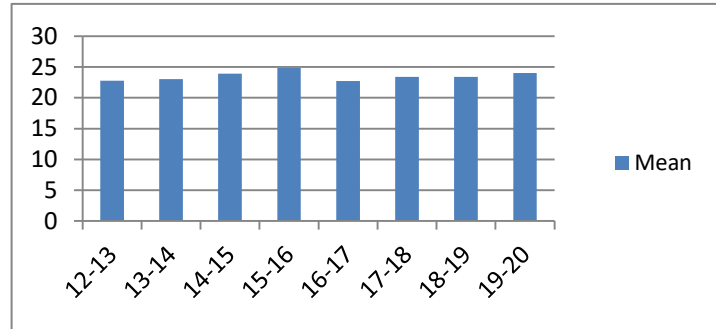


Average Incarceration Lengths in Months by Felony Class and Offense

Note: Column N indicates the number of felony convictions. Individual offenders can have multiple convictions. Incarceration includes life without parole and death sentences. Probation includes sentences to community corrections.

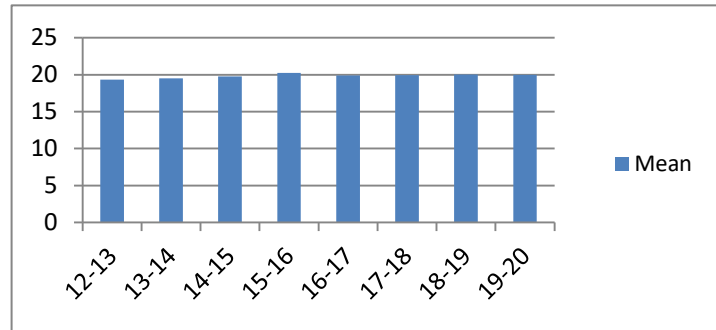
Average Incarceration Length - Schedule VI Drugs: Not < 1/2 Ounce - All Offenders

Fiscal Year	Mean	Median	Standard Deviation	N
12-13	22.77	24.00	11.54	379
13-14	23.05	24.00	11.65	668
14-15	23.91	24.00	11.21	547
15-16	24.87	24.00	12.36	451
16-17	22.72	24.00	10.40	360
17-18	23.39	24.00	11.17	322
18-19	23.41	24.00	11.85	286
19-20	24.03	24.00	11.09	135



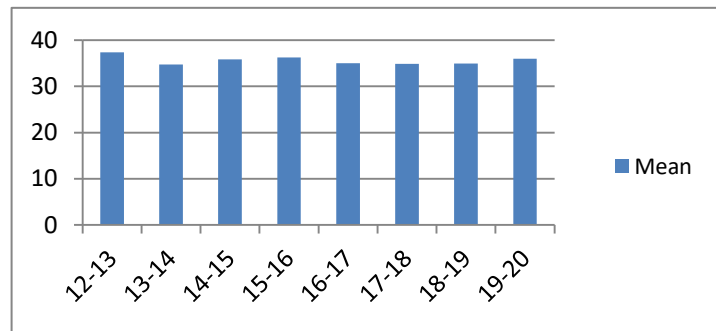
Average Incarceration Length - Schedule VI Drugs: Not < 1/2 Ounce - Standard Offenders

Fiscal Year	Mean	Median	Standard Deviation	N
12-13	19.31	24.00	5.99	318
13-14	19.49	24.00	6.70	547
14-15	19.76	24.00	6.17	423
15-16	20.24	24.00	6.12	339
16-17	19.89	24.00	6.13	302
17-18	19.92	24.00	6.12	266
18-19	20.01	24.00	6.86	241
19-20	19.96	24.00	5.49	106



Average Incarceration Length - Schedule VI Drugs: Not < 1/2 Ounce - Multiple Offenders

Fiscal Year	Mean	Median	Standard Deviation	N
12-13	37.36	36.00	9.32	44
13-14	34.75	36.00	10.47	101
14-15	35.84	36.00	10.23	110
15-16	36.26	36.00	10.39	91
16-17	35.00	36.00	10.67	48
17-18	34.88	36.00	9.91	43
18-19	34.97	36.00	9.71	35
19-20	36.00	36.00	10.32	26

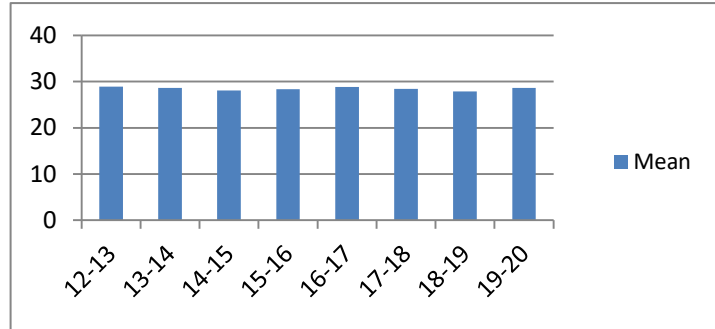


Average Incarceration Lengths in Months by Felony Class and Offense

Note: Column N indicates the number of felony convictions. Individual offenders can have multiple convictions. Incarceration includes life without parole and death sentences. Probation includes sentences to community corrections.

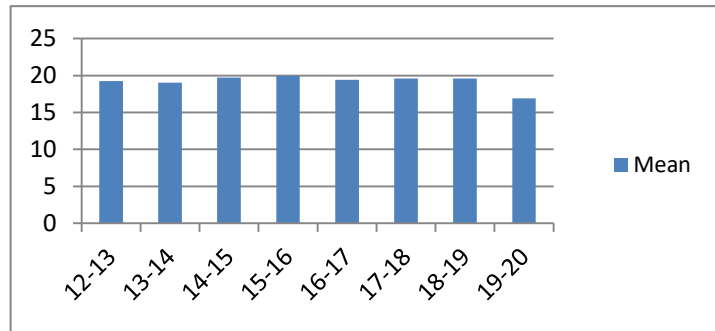
**Average Incarceration Length -
Habitual Traffic Offender - All Offenders**

Fiscal Year	Mean	Median	Standard Deviation	N
12-13	28.89	24.00	16.66	229
13-14	28.64	24.00	15.95	398
14-15	28.08	24.00	14.42	321
15-16	28.37	24.00	14.89	308
16-17	28.88	24.00	15.50	285
17-18	28.46	24.00	14.29	257
18-19	27.88	24.00	15.27	215
19-20	28.64	24.00	16.55	22



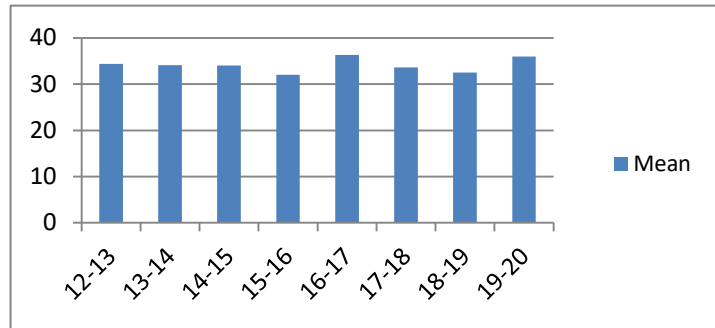
**Average Incarceration Length -
Habitual Traffic Offender - Standard Offenders**

Fiscal Year	Mean	Median	Standard Deviation	N
12-13	19.24	24.00	6.29	143
13-14	19.03	18.00	6.27	229
14-15	19.74	24.00	6.40	185
15-16	19.92	24.00	5.45	171
16-17	19.41	24.00	5.65	171
17-18	19.58	24.00	5.56	139
18-19	19.60	24.00	6.13	131
19-20	16.91	12.00	5.89	11



**Average Incarceration Length -
Habitual Traffic Offender - Multiple Offenders**

Fiscal Year	Mean	Median	Standard Deviation	N
12-13	34.41	36.00	9.17	52
13-14	34.14	36.00	9.87	116
14-15	34.07	36.00	10.24	104
15-16	32.04	30.00	9.40	105
16-17	36.36	36.00	10.54	77
17-18	33.62	36.00	9.11	92
18-19	32.51	36.00	8.98	53
19-20	36.00	36.00	12.00	9

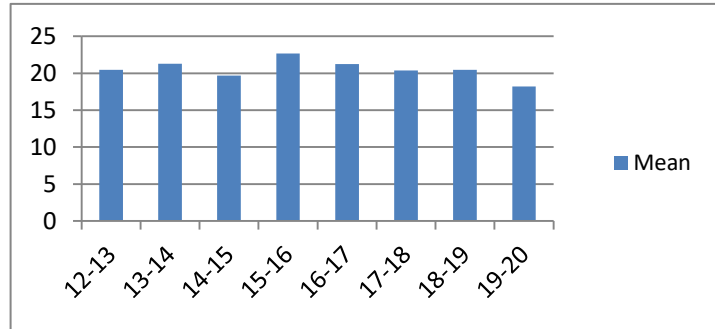


Average Incarceration Lengths in Months by Felony Class and Offense

Note: Column N indicates the number of felony convictions. Individual offenders can have multiple convictions. Incarceration includes life without parole and death sentences. Probation includes sentences to community corrections.

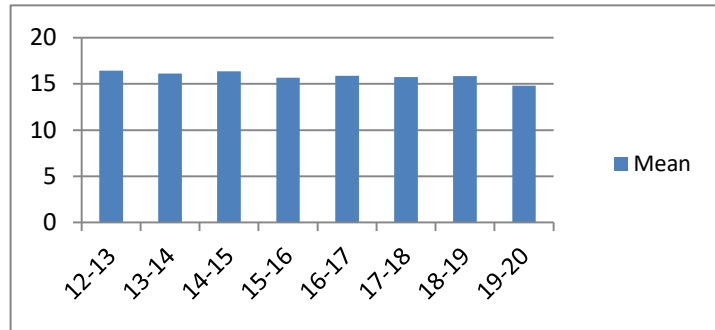
**Average Incarceration Length - Failure to Appear
(Felony) - All Offenders**

Fiscal Year	Mean	Median	Standard Deviation	N
12-13	20.44	18.00	11.07	227
13-14	21.29	18.00	13.04	417
14-15	19.68	18.00	10.26	375
15-16	22.68	24.00	14.98	351
16-17	21.23	18.00	13.05	426
17-18	20.39	12.00	12.65	441
18-19	20.47	12.00	13.28	377
19-20	18.22	12.00	12.13	32



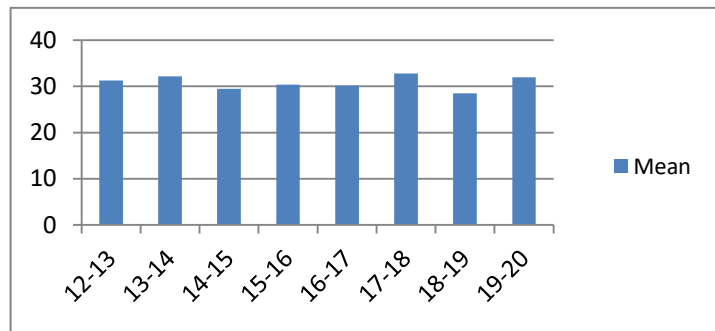
**Average Incarceration Length - Failure to Appear
(Felony) - Standard Offenders**

Fiscal Year	Mean	Median	Standard Deviation	N
12-13	16.44	12.00	5.55	179
13-14	16.13	12.00	5.57	320
14-15	16.38	12.00	5.50	302
15-16	15.68	12.00	5.40	239
16-17	15.88	12.00	5.59	319
17-18	15.74	12.00	5.31	351
18-19	15.85	12.00	5.60	301
19-20	14.82	12.00	5.01	28



**Average Incarceration Length - Failure to Appear
(Felony) - Multiple Offenders**

Fiscal Year	Mean	Median	Standard Deviation	N
12-13	31.27	24.00	10.31	37
13-14	32.15	24.00	10.26	75
14-15	29.50	24.00	8.71	64
15-16	30.36	24.00	9.56	84
16-17	30.14	24.00	9.13	77
17-18	32.79	30.00	10.43	71
18-19	28.47	24.00	8.56	51
19-20	32.00	36.00	6.93	3



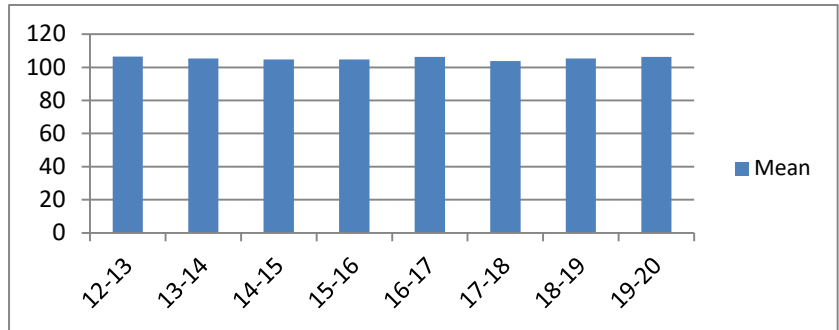
Average Probation Lengths in Months by Felony Class

Note: Column N indicates the number of felony convictions. Individual offenders can have multiple convictions. Incarceration includes lifewithout parole and death sentences. Probation includes sentences to community corrections.

Average Probation Length - Felony Class B - All Offenders

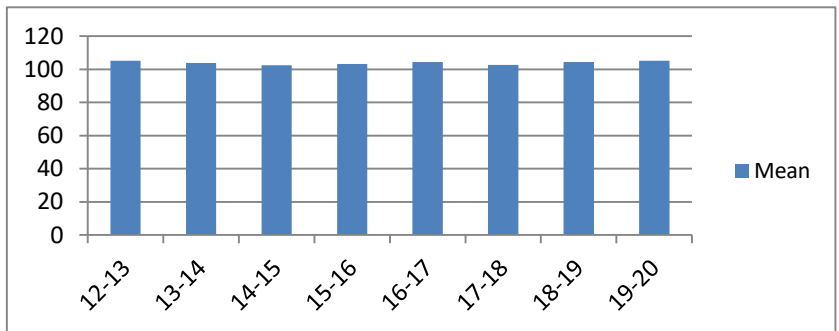
Fiscal Year	Mean	Median	Standard Deviation	N
12-13	106.52	96.00	23.33	294
13-14	105.24	96.00	19.45	486
14-15	104.78	96.00	18.85	554
15-16	104.68	96.00	16.27	509
16-17	106.24	96.00	21.93	483
17-18	103.70	96.00	16.94	690
18-19	105.23	96.00	17.30	887
19-20	106.33	96.00	19.31	1,051

included due to low occurrence frequencies.



Average Probation Length - Felony Class B - Standard Offenders

Fiscal Year	Mean	Median	Standard Deviation	N
12-13	105.24	96.00	22.46	276
13-14	103.84	96.00	16.26	468
14-15	102.48	96.00	14.49	519
15-16	103.19	96.00	13.07	486
16-17	104.34	96.00	17.60	466
17-18	102.79	96.00	14.34	663
18-19	104.53	96.00	16.03	871
19-20	105.31	96.00	18.07	1,017



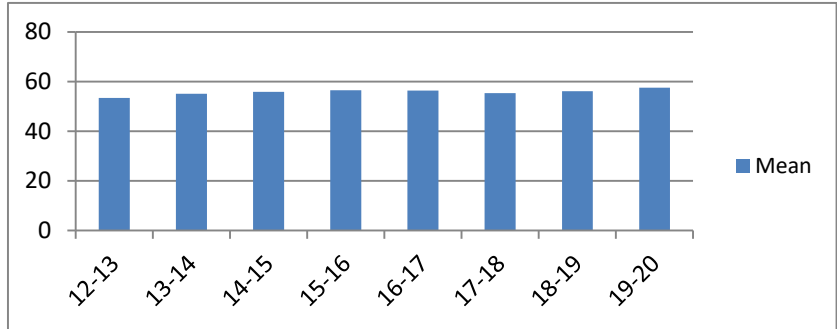
The table for multiple offenders was not included due to low occurrence frequencies.

Average Probation Lengths in Months by Felony Class

Note: Column N indicates the number of felony convictions. Individual offenders can have multiple convictions. Incarceration includes lifewithout parole and death sentences. Probation includes sentences to community corrections.

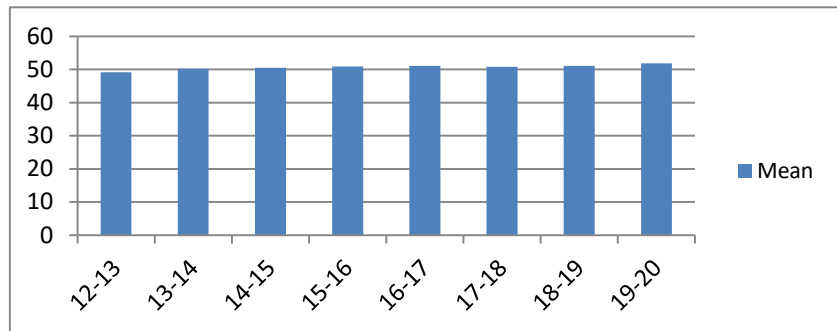
Average Probation Length - Class C - All Offenders

Fiscal Year	Mean	Median	Standard Deviation	N
12-13	53.45	48.00	21.91	1,187
13-14	55.01	48.00	24.09	2,394
14-15	55.90	48.00	23.26	2,114
15-16	56.49	48.00	23.75	2,406
16-17	56.42	48.00	22.63	2,639
17-18	55.27	48.00	21.52	2,822
18-19	56.11	48.00	22.39	3,069
19-20	57.51	48.00	22.24	3,185



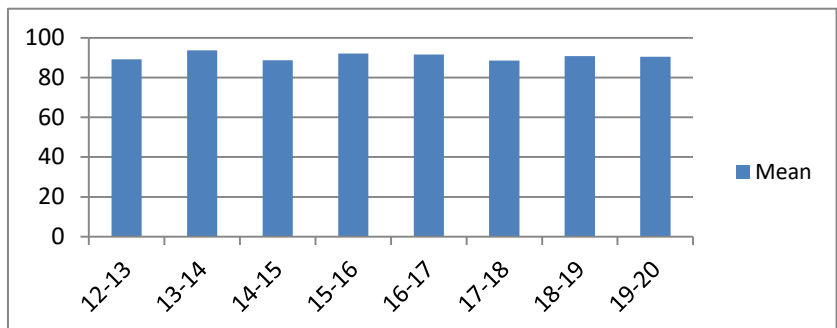
Average Probation Length - Class C - Standard Offenders

Fiscal Year	Mean	Median	Standard Deviation	N
12-13	49.19	48.00	16.95	1,063
13-14	50.26	48.00	18.47	2,154
14-15	50.54	48.00	17.85	1,834
15-16	50.87	48.00	17.44	2,085
16-17	51.05	48.00	16.42	2,313
17-18	50.78	48.00	16.16	2,516
18-19	51.04	48.00	17.05	2,703
19-20	51.89	48.00	16.31	2,731



Average Probation Length - Class C - Multiple Offenders

Fiscal Year	Mean	Median	Standard Deviation	N
12-13	89.20	96.00	21.90	113
13-14	93.65	96.00	23.75	205
14-15	88.72	84.00	22.06	237
15-16	92.13	96.00	18.81	254
16-17	91.66	96.00	22.44	286
17-18	88.56	84.00	20.93	272
18-19	90.85	96.00	20.07	331
19-20	90.53	96.00	20.71	409

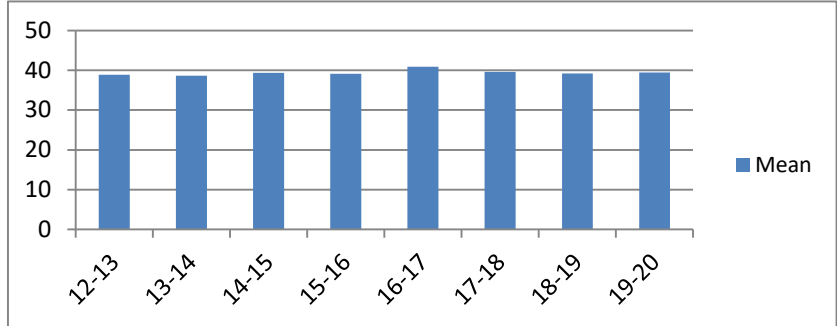


Average Probation Lengths in Months by Felony Class

Note: Column N indicates the number of felony convictions. Individual offenders can have multiple convictions. Incarceration includes lifewithout parole and death sentences. Probation includes sentences to community corrections.

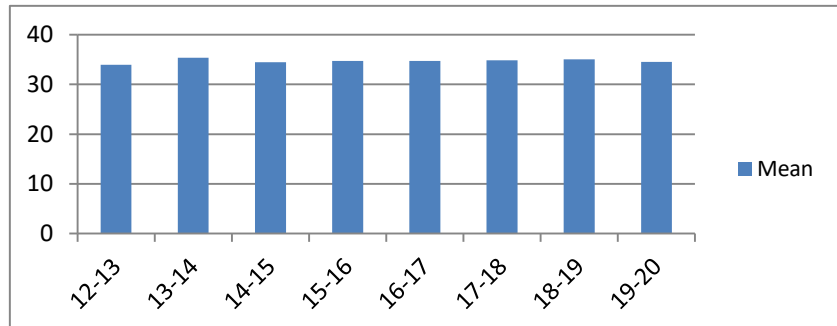
Average Probation Length - Class D - All Offenders

Fiscal Year	Mean	Median	Standard Deviation	N
12-13	38.87	36.00	20.67	1,782
13-14	38.61	36.00	20.85	3,378
14-15	39.39	36.00	19.50	3,189
15-16	39.11	36.00	18.72	2,890
16-17	40.94	36.00	21.72	3,040
17-18	39.58	36.00	18.42	2,793
18-19	39.23	36.00	20.17	2,783
19-20	39.43	36.00	18.94	2,773



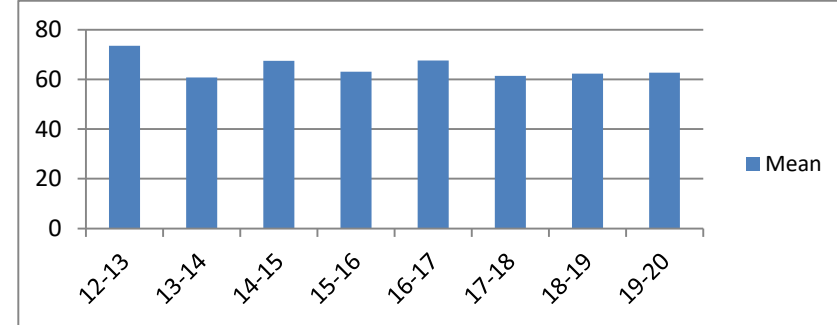
Average Probation Length - Class D - Standard Offenders

Fiscal Year	Mean	Median	Standard Deviation	N
12-13	33.93	36.00	12.83	1,583
13-14	35.35	36.00	16.18	3,074
14-15	34.49	36.00	12.76	2,773
15-16	34.74	36.00	13.01	2,526
16-17	34.70	36.00	13.36	2,569
17-18	34.86	36.00	11.11	2,416
18-19	35.04	36.00	14.97	2,445
19-20	34.57	36.00	11.93	2,393



Average Probation Length - Class D - Multiple Offenders

Fiscal Year	Mean	Median	Standard Deviation	N
12-13	73.48	72.00	21.38	180
13-14	60.74	60.00	19.72	235
14-15	67.44	60.00	21.63	358
15-16	63.03	60.00	18.42	296
16-17	67.55	72.00	19.55	376
17-18	61.48	60.00	18.15	304
18-19	62.33	54.00	19.01	282
19-20	62.67	60.00	18.91	312

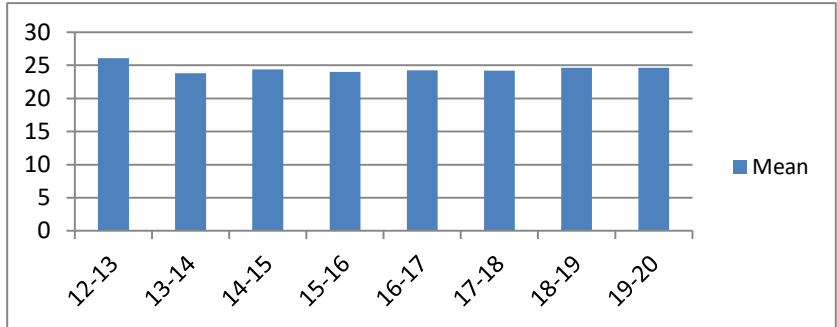


Average Probation Lengths in Months by Felony Class

Note: Column N indicates the number of felony convictions. Individual offenders can have multiple convictions. Incarceration includes lifewithout parole and death sentences. Probation includes sentences to community corrections.

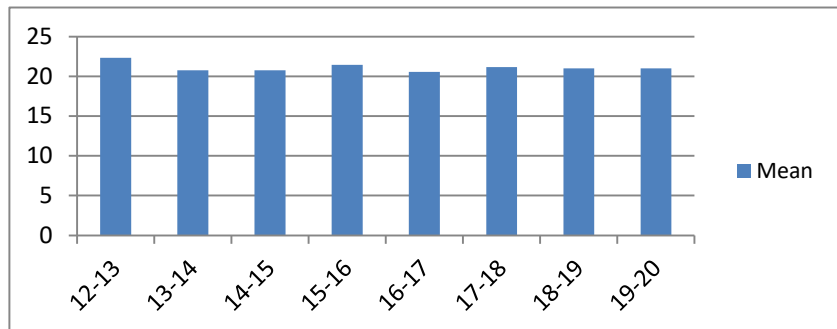
Average Probation Length - Class E - All Offenders

Fiscal Year	Mean	Median	Standard Deviation	N
12-13	26.09	24.00	16.71	1,976
13-14	23.77	24.00	12.76	3,775
14-15	24.38	24.00	14.57	3,508
15-16	24.00	24.00	11.94	3,558
16-17	24.24	24.00	13.03	3,460
17-18	24.18	24.00	12.83	3,780
18-19	24.61	24.00	14.05	3,974
19-20	24.63	24.00	12.25	3,651



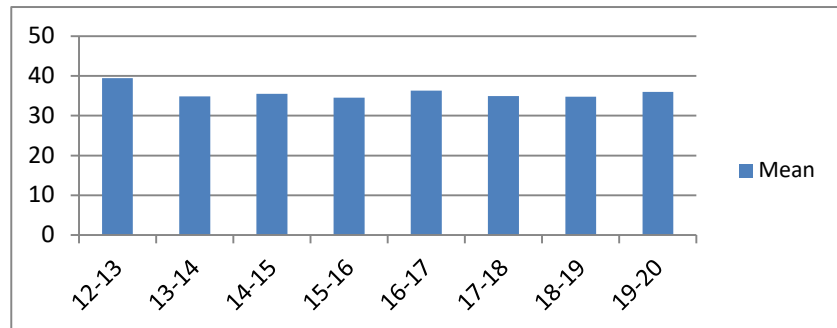
Average Probation Length - Class E - Standard Offenders

Fiscal Year	Mean	Median	Standard Deviation	N
12-13	22.35	24.00	14.47	1,643
13-14	20.75	24.00	8.81	3,224
14-15	20.75	24.00	11.46	2,865
15-16	21.46	24.00	8.56	3,062
16-17	20.57	24.00	8.31	2,885
17-18	21.16	24.00	9.04	3,203
18-19	21.02	24.00	9.72	3,309
19-20	21.01	24.00	7.26	3,027



Average Probation Length - Class E - Multiple Offenders

Fiscal Year	Mean	Median	Standard Deviation	N
12-13	39.43	48.00	10.37	266
13-14	34.90	36.00	10.97	419
14-15	35.49	36.00	10.63	499
15-16	34.55	36.00	10.66	411
16-17	36.34	36.00	10.56	444
17-18	34.98	36.00	11.34	449
18-19	34.81	36.00	10.39	499
19-20	35.95	36.00	10.17	467

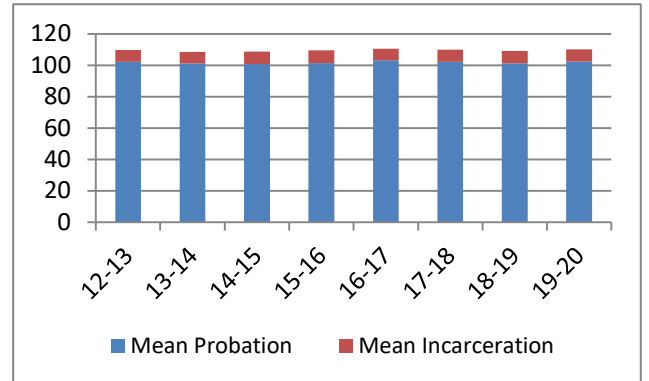


Average Split Sentence Lengths in Months by Felony Class

Note: Column N indicates the number of felony convictions. Individual offenders can have multiple convictions. Incarceration includes life without parole and death sentences. Probation includes sentences to community corrections.

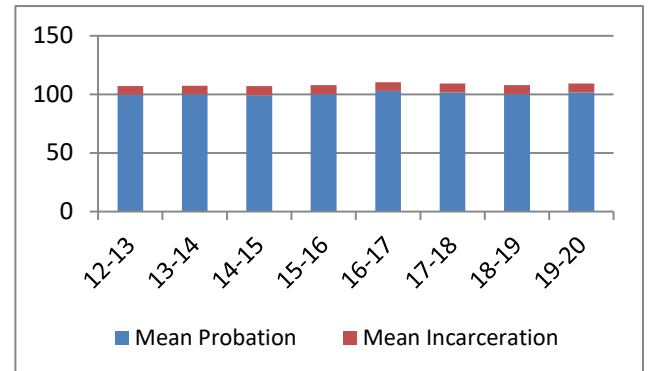
Average Sentence Length - Felony Class B - All Offenders

Fiscal Year	Months of Incarceration				Months of Probation			
	Mean	Median	Standard Deviation	N	Mean	Median	Standard Deviation	N
12-13	7.4	6.6	4.2	230	102.2	96.0	25.1	230
13-14	7.3	6.0	4.2	353	101.2	96.0	17.7	353
14-15	7.9	9.0	4.1	416	100.8	96.0	19.7	416
15-16	8.0	9.0	4.2	412	101.4	96.0	18.3	412
16-17	7.5	6.0	4.2	705	103.1	96.0	15.0	705
17-18	7.7	6.0	4.1	754	102.3	96.0	16.6	754
18-19	7.9	8.0	4.2	949	101.2	96.0	18.0	949
19-20	7.8	6.0	4.5	840	102.3	96.0	18.4	840



Average Sentence Length - Felony Class B - Standard Offenders

Fiscal Year	Months of Incarceration				Months of Probation			
	Mean	Median	Standard Deviation	N	Mean	Median	Standard Deviation	N
12-13	7.4	6.2	4.2	224	99.7	96.0	15.4	224
13-14	7.2	6.0	4.1	343	99.9	96.0	15.2	343
14-15	7.8	9.0	4.1	398	99.1	96.0	16.6	398
15-16	7.9	8.9	4.1	395	99.8	96.0	15.7	395
16-17	7.5	6.0	4.2	697	102.8	96.0	14.5	697
17-18	7.7	6.0	4.1	739	101.6	96.0	14.8	739
18-19	7.9	7.9	4.2	920	100.0	96.0	16.0	920
19-20	7.7	6.0	4.5	816	101.5	96.0	16.1	816



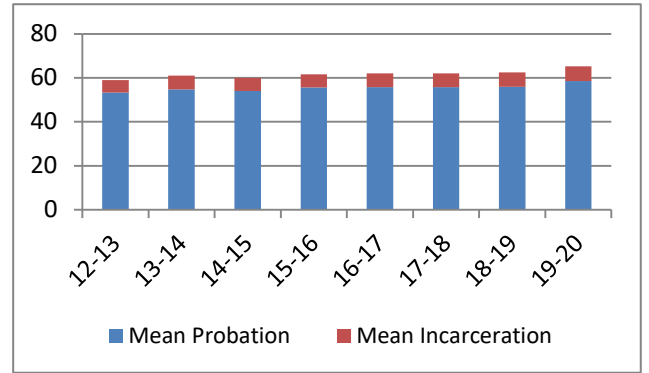
The table for multiple offenders was not included due to low occurrence frequencies.

Average Split Sentence Lengths in Months by Felony Class

Note: Column N indicates the number of felony convictions. Individual offenders can have multiple convictions. Incarceration includes life without parole and death sentences. Probation includes sentences to community corrections.

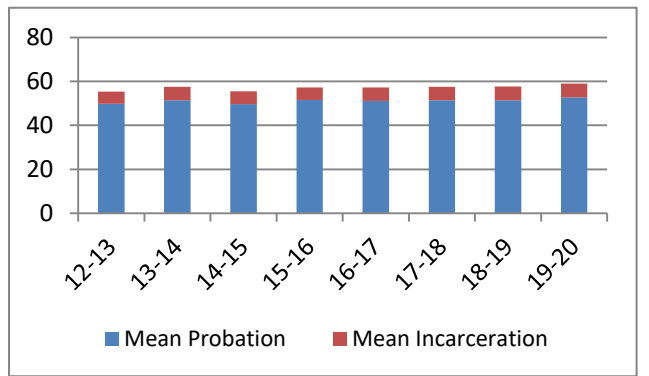
Average Sentence Length - Class C - All Offenders

Fiscal Year	Months of Incarceration				Months of Probation			
	Mean	Median	Standard Deviation	N	Mean	Median	Standard Deviation	N
12-13	5.7	4.0	4.0	693	53.3	48.0	20.7	693
13-14	6.2	5.9	4.2	1,355	54.8	48.0	21.3	1,355
14-15	6.0	5.0	4.2	1,261	54.0	48.0	22.1	1,261
15-16	5.9	5.9	4.1	1,445	55.6	48.0	21.8	1,445
16-17	6.3	5.9	4.1	1,681	55.8	48.0	22.9	1,681
17-18	6.3	5.9	4.1	1,935	55.7	48.0	21.9	1,935
18-19	6.5	5.9	4.3	2,104	55.9	48.0	22.2	2,104
19-20	6.6	5.9	4.1	1,687	58.6	56.0	23.8	1,687



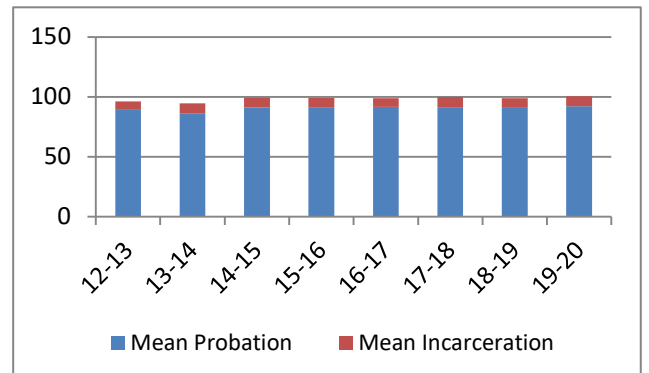
Average Sentence Length - Class C - Standard Offenders

Fiscal Year	Months of Incarceration				Months of Probation			
	Mean	Median	Standard Deviation	N	Mean	Median	Standard Deviation	N
12-13	5.6	4.0	4.0	629	49.7	48.0	16.7	629
13-14	6.0	5.9	4.1	1,235	51.4	48.0	18.0	1,235
14-15	5.7	4.9	4.1	1,123	49.7	48.0	16.8	1,123
15-16	5.7	4.9	4.0	1,305	51.6	48.0	17.5	1,305
16-17	6.1	5.9	4.0	1,492	51.0	48.0	16.7	1,492
17-18	6.0	5.9	4.0	1,737	51.4	48.0	17.6	1,737
18-19	6.3	5.9	4.2	1,882	51.4	48.0	16.9	1,882
19-20	6.2	5.9	4.1	1,446	52.7	48.0	18.0	1,446



Average Sentence Length - Class C - Multiple Offenders

Fiscal Year	Months of Incarceration				Months of Probation			
	Mean	Median	Standard Deviation	N	Mean	Median	Standard Deviation	N
12-13	6.3	6.0	4.4	62	89.7	96.0	21.9	62
13-14	8.3	12.0	4.3	106	86.3	84.0	20.5	106
14-15	8.2	11.0	4.2	120	91.1	96.0	26.9	120
15-16	7.9	9.9	4.4	126	91.2	96.0	20.9	126
16-17	7.1	6.0	4.2	166	91.7	90.6	26.3	166
17-18	8.7	12.0	4.3	180	91.2	96.0	18.6	180
18-19	8.2	9.0	4.8	189	90.7	96.0	20.5	189
19-20	8.5	10.0	4.0	208	92.1	91.2	22.3	208

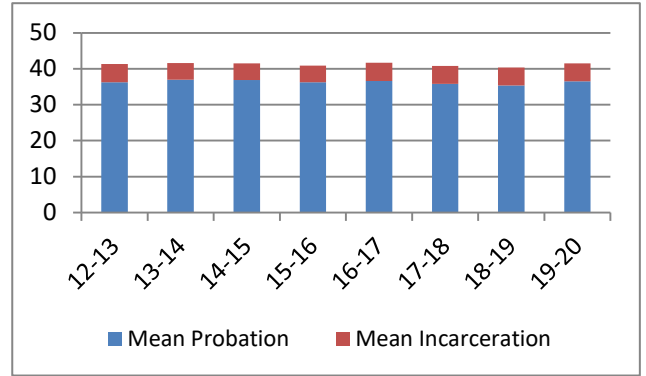


Average Split Sentence Lengths in Months by Felony Class

Note: Column N indicates the number of felony convictions. Individual offenders can have multiple convictions. Incarceration includes life without parole and death sentences. Probation includes sentences to community corrections.

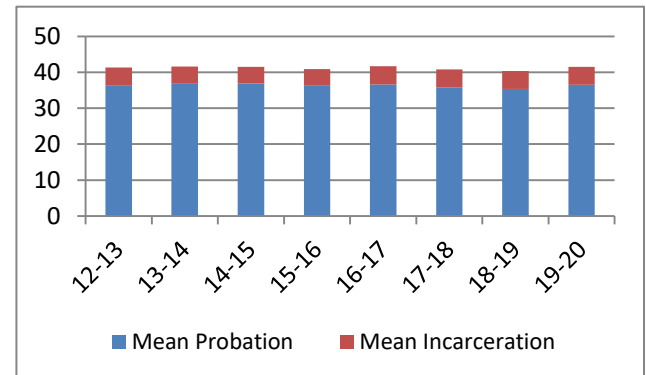
Average Sentence Length - Class D - All Offenders

Fiscal Year	Months of Incarceration				Months of Probation			
	Mean	Median	Standard Deviation	N	Mean	Median	Standard Deviation	N
12-13	5.0	3.9	3.9	787	36.3	36.0	15.6	787
13-14	4.6	3.0	3.8	1,314	37.0	36.0	15.6	1,314
14-15	4.6	3.1	3.6	1,235	36.9	36.0	15.1	1,235
15-16	4.6	3.0	3.7	1,178	36.3	36.0	14.0	1,178
16-17	5.1	3.9	3.9	1,236	36.6	36.0	14.4	1,236
17-18	4.9	3.9	3.8	1,145	35.8	36.0	13.2	1,145
18-19	5.0	3.9	3.8	1,219	35.4	36.0	12.6	1,219
19-20	5.0	3.9	4.3	1,089	36.5	36.0	13.0	1,089



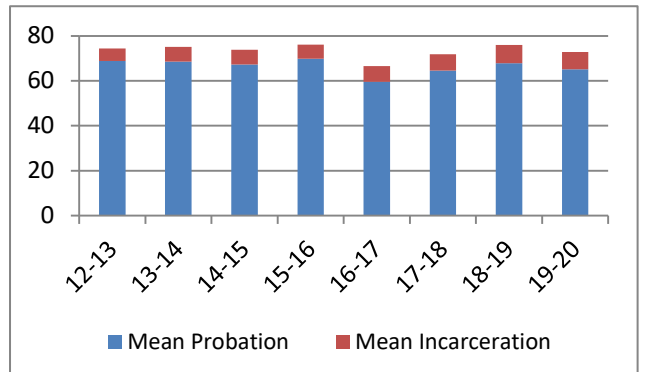
Average Sentence Length - Class D - Standard Offenders

Fiscal Year	Months of Incarceration				Months of Probation			
	Mean	Median	Standard Deviation	N	Mean	Median	Standard Deviation	N
12-13	5.0	3.9	3.9	787	36.3	36.0	15.6	787
13-14	4.6	3.0	3.8	1,314	37.0	36.0	15.6	1,314
14-15	4.6	3.1	3.6	1,235	36.9	36.0	15.1	1,235
15-16	4.6	3.0	3.7	1,178	36.3	36.0	14.0	1,178
16-17	5.1	3.9	3.9	1,236	36.6	36.0	14.4	1,236
17-18	4.9	3.9	3.8	1,145	35.8	36.0	13.2	1,145
18-19	5.0	3.9	3.8	1,219	35.4	36.0	12.6	1,219
19-20	5.0	3.9	4.3	1,089	36.5	36.0	13.0	1,089



Average Sentence Length - Class D - Multiple Offenders

Fiscal Year	Months of Incarceration				Months of Probation			
	Mean	Median	Standard Deviation	N	Mean	Median	Standard Deviation	N
12-13	5.5	4.7	4.2	50	68.9	72.0	21.4	50
13-14	6.6	6.0	4.5	126	68.5	72.0	19.2	126
14-15	6.5	6.0	4.8	108	67.3	69.0	16.8	108
15-16	6.2	6.0	3.7	125	69.9	69.0	19.2	125
16-17	7.0	6.0	4.3	140	59.6	60.0	19.9	140
17-18	7.2	6.0	4.6	151	64.6	60.0	18.9	151
18-19	8.0	9.0	4.0	160	67.9	72.0	19.6	160
19-20	7.7	7.3	4.0	154	65.1	60.0	21.4	154

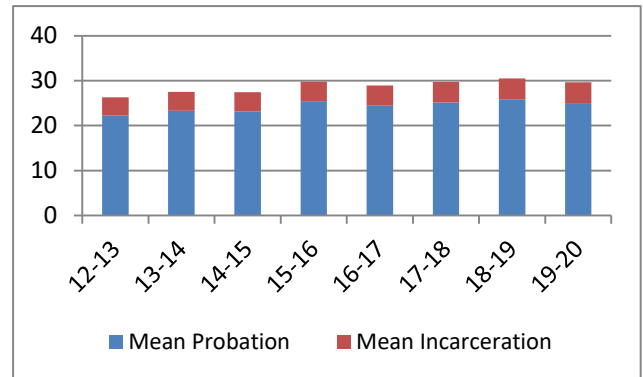


Average Split Sentence Lengths in Months by Felony Class

Note: Column N indicates the number of felony convictions. Individual offenders can have multiple convictions. Incarceration includes life without parole and death sentences. Probation includes sentences to community corrections.

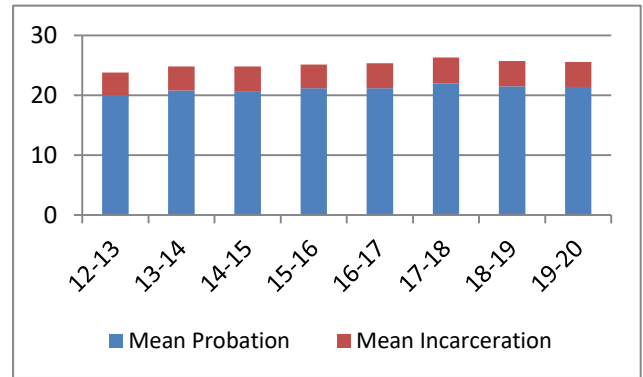
Average Sentence Length - Class E - All Offenders

Fiscal Year	Months of Incarceration				Months of Probation			
	Mean	Median	Standard Deviation	N	Mean	Median	Standard Deviation	N
12-13	4.0	3.0	3.0	860	22.2	22.0	15.9	860
13-14	4.2	3.0	3.2	1,452	23.3	24.0	13.6	1,452
14-15	4.3	3.3	3.3	1,541	23.2	24.0	13.2	1,541
15-16	4.4	3.0	3.4	1,623	25.4	24.0	17.8	1,623
16-17	4.5	3.0	3.4	1,772	24.5	24.0	14.1	1,772
17-18	4.6	3.6	3.4	1,806	25.1	24.0	13.5	1,806
18-19	4.6	3.3	3.5	1,891	25.9	24.0	17.0	1,891
19-20	4.6	3.3	3.5	1,520	25.0	24.0	14.0	1,520



Average Sentence Length - Class E - Standard Offenders

Fiscal Year	Months of Incarceration				Months of Probation			
	Mean	Median	Standard Deviation	N	Mean	Median	Standard Deviation	N
12-13	3.9	3.0	2.9	767	19.9	21.0	10.5	767
13-14	4.0	3.0	3.1	1,263	20.8	22.5	11.5	1,263
14-15	4.1	3.0	3.1	1,328	20.7	22.6	11.1	1,328
15-16	4.0	3.0	3.0	1,352	21.1	23.5	11.5	1,352
16-17	4.2	3.0	3.2	1,495	21.2	24.0	10.0	1,495
17-18	4.3	3.0	3.2	1,519	21.9	24.0	10.8	1,519
18-19	4.3	3.0	3.2	1,517	21.5	24.0	9.5	1,517
19-20	4.2	3.0	3.3	1,253	21.4	24.0	10.2	1,253



Average Sentence Length - Class E - Multiple Offenders

Fiscal Year	Months of Incarceration				Months of Probation			
	Mean	Median	Standard Deviation	N	Mean	Median	Standard Deviation	N
12-13	5.1	4.5	3.7	72	33.7	36.0	13.2	72
13-14	4.7	4.9	3.2	152	35.8	36.0	10.9	152
14-15	5.3	4.9	3.7	179	36.6	36.0	12.1	179
15-16	6.5	5.9	4.3	214	43.1	36.0	27.3	214
16-17	5.9	4.9	3.8	222	38.1	36.0	14.3	222
17-18	5.9	4.9	4.0	242	38.5	36.0	11.0	242
18-19	5.7	5.9	4.2	284	37.9	36.0	26.6	284
19-20	5.9	5.0	3.8	186	35.9	36.0	12.1	186

